

## exhibitions

### ● CRANBROOK ACADEMY OF ART MUSEUM

Exhibit of works by recent Academy graduates in all disciplines continues through Sept. 18. "Selections: The Cranbrook Ceramic Collection" is in the lower galleries through Sept. 18. This features 32 pieces by outstanding American and European artists who have a Cranbrook connection. Hours are from 1-5 p.m. Tuesday-Saturday, 500 Lone Pine, Bloomfield Hills.

### ● GALLERY 22

Monday, Aug. 1 — Summer art show of paintings and graphics by 40 artists continues through Sept. 15. Hours are from 9:30 a.m. to 6 p.m. Monday-Friday, until 9 p.m. Thursday and 9:30 a.m. to 5 p.m. Saturday, 22 E. Long Lake, Bloomfield Hills.

### ● COUNTY GALLERY

Monday, Aug. 1 — "Brass Rubbings" by Julius Kueoy of Rochester Hills are on display through Sept. 15. Reception to meet the artist will be from 5-8 p.m. Thursday, Aug. 25. The artist traveled to remote parts of England to find the brasses, some dating to the 13th century. The gallery is open from 9 a.m. to 5 p.m. Monday-Friday. It is in the Oakland County Executive Building in the County Service Center, 1200 North Telegraph, Pontiac.

### ● D&J BITTICK GALLERY LTD.

Wednesday, Aug. 3 — "China: 1988," a photographic exhibition, continues through Aug. 27. The gallery's collection includes ceramics, sculptures, prints and paintings. Hours are from 11 a.m. to 5:30 p.m. Tuesday-Saturday, 536 N. Woodward, Birmingham.

### ● PRINT GALLERY

Oil paintings by Stephen Metcalf of Chicago will be on display through September. He has a bachelor's degree and a master's degree from the University of Illinois and is represented in a number of public and corporate collections. Hours are from 10 a.m. to 6 p.m. Monday-Saturday.

Monday and until 9 p.m. Thursday, 29203 Northwestern, Southfield.

### ● PORTIA'S FRAMING GALLERY

Prints by Michigan artists, including a view of Mackinac Island by Tom Cameron and a view of the Grand Hotel by Barb Cicchelli, are on display through August along with Michigan birds by Thomas W. Ford, Adams Square Arcade, 735 S. Adams, Birmingham.

### ● CHARLES G. FIRBY FINE ARTS

Nineteenth century oils and watercolors by a variety of American and European artists, including some from Michigan, are on display during August and September. Hours are from 10 a.m. to 6 p.m. Monday-Saturday, until 8 p.m. Thursday and Friday, 590 E. Maple, Birmingham.

### ● DETROIT COUNCIL FOR THE ARTS

THE M'WANZA exhibit, "Reveries, Fears and Memories — Part I" is being held over through August. Hours are from 9 a.m. to 5 p.m. Monday-Friday, 47 E. Adams, Detroit.

### ● SOMERSET MALL

Exhibit of color photographs, "Children of the World," by Dr. Norman Weiss of West Bloomfield is on display through the month. The photographs were taken in a dozen different countries by the artist, who has an excellent eye for catching people at ease in their own environments, whether desert, mountain or jungle. Open free of charge during regular mall hours, Big Beaver and Coolidge, Troy.

### ● ANNEX GALLERY

New gallery opens with a show of originals and prints by Peter Max, continuing through Aug. 15. Regular hours are from 10 a.m. to 6 p.m. Tuesday-Friday and until 8 p.m. Saturday, 17320 W. Eight Mile (near Southfield Road), Southfield.

### ● PONTIAC ART CENTER

Saturday, July 30 — Installations by Bob Caskey and photography by

Karen Splisbergen-Richardson. Reception from 6-8 p.m. Saturday, July 30. Show continues through Sept. 2. Hours are from 9 a.m. to 5 p.m. Tuesday-Thursday and Saturday, 47 Williams, Pontiac.

### ● PAINT CREEK CENTER FOR THE ARTS

"Painful" teapots by Janet Newwider, some functional, some purely decorative, are on display through August. She teaches at the Center and recently had work exhibited at Pewabic Pottery of Detroit. Hours are from 10 a.m. to 5 p.m. Tuesday-Saturday, 407 Pine, Rochester.

### ● ROBERT L. KIDD GALLERY

New paintings by James Yobe and Richard Fluhr are on display

through Aug. 13. Yobe is from New York and Fluhr is from Texas. Hours are 10:30 a.m. to 5:30 p.m. Tuesday-Saturday, 107 Townsend, Birmingham.

### ● BIRMINGHAM BLOOMFIELD ART ASSOCIATION

"Expansions," an exhibit of paintings, is in the expanded rental and sales gallery through Aug. 19. Also included and also for sale are pottery, glass and jewelry. The Sculptors Guild of Michigan has a variety of work on display in the main gallery — bronzes, casting, welded steel, wood and terra cotta. Hours are 9:30 a.m. to 4:30 p.m. weekdays, 1516 S. Cranbrook, Birmingham.

### ● HILL GALLERY

Sculpture and drawings by Carol

Hepper continue through Aug. 13, 163 Townsend, Birmingham.

### ● GALLERIE 454

"The Colors of Peter Max" continues through Aug. 20. 15105 Kercival, Grosse Pointe Park.

### ● TOWN CENTER GALLERY

Limited editions by Southwest artist R.C. Gorman and new works by gallery regulars Rinal, Cerj and Fekete. Hours are noon to 5 p.m. Monday and 11 a.m. to 5 p.m. Tuesday-Friday, 3000 Town Center, Suite 45, Southfield.

NUSAN COHEN ASSOCIATES PRESENTS

## A LIMITED EDITION OF 19 EXCEPTIONAL HOMES

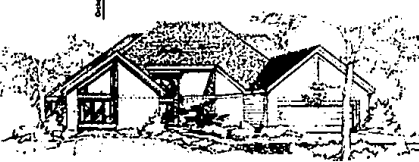
Introducing: Sable Pointe... an exclusive community in the hills of West Bloomfield. A neighborhood, not a giant development. Designed for those who truly appreciate fine quality. Featuring extraordinary first-floor master bedroom suites. Two and one-half baths. Optionally customized lifestyle rooms including lofts, sitting rooms, libraries, great rooms and walk-outs.

Vaulted and cathedral ceilings. Breakfast rooms. And, first floor laundries. Be one of the fortunate few who will call Sable Pointe home... for the best years of your life.

SABLE-POINTE

Call 682-6080

for information and a preview of our exquisitely furnished model nestled quietly off Green Road, just west of Orchard Lake Road, north of Walnut Lake Road.



Signature III, Inc. provides a professional atmosphere with a creative team that will interest all Real Estate salespersons looking for a change for the better. Our commission structure is unparalleled! New licensees also welcomed. Make the call that will make the difference. Ask for Harold VanDyke, 489-4010.

**Outstanding Properties Offered by Signature III**

<b>West Bloomfield</b> <b>SHERRWOOD CREEK</b> CONDOMINIUMS from \$148,800 Three bedroom, two and one-half baths, full kitchen, granite counter tops, hardwood floors, central air, patio, pool, 21st century living. Call 489-4010 or 981-5430	<b>West Bloomfield</b> <b>THE RAYNES</b> from \$225,800 Desirable ranch, two and one-half baths, full kitchen, granite counter tops, hardwood floors, central air, patio, pool, 21st century living. Call 489-4010	<b>Farmington Hills</b> <b>COUNTRY RIDGE PHASE 6</b> from \$225,800 Newly wooded setting, executive ranch, 4000 sq. ft., 3 1/2 baths, 3 car garage, call 489-4010 or 798-0041
<b>West Bloomfield</b> <b>OAK RIDGE PLACE CONDOMINIUMS</b> from only \$88,800 CONDO. ROOMS IN HIGH CONTEMPORARY setting and new decor include 2 1/2 baths, 21st century living. Call 489-4010	<b>Farmington Hills</b> <b>FARMINGTON GLEN PHASE II</b> from \$168,800 Newly wooded setting, executive ranch, 4000 sq. ft., 3 1/2 baths, 3 car garage, call 489-4010 or 798-0041	<b>West Bloomfield</b> <b>CHARLESTON CONDO</b> \$198,800 Ranch condominium on corner lot, two and one-half baths, 2 1/2 car garage, wood floor entry, marble ceilings, extra, extra, extra. Call 489-4010
<b>Farmington Hills</b> <b>ROCKFORD VALLEY VALLEY</b> \$228,800 New 5000 sq. ft., 4 bedrooms, 3 1/2 baths, 3 car garage, wood floor entry, marble ceilings, extra, extra, extra. Call 489-4010		

**Signature III Inc.**  
Real Estate Group  
489-4010  
33533 W. Twelve Mile, Suite 160, Farmington Hills



## Merrill Lynch Realty



**FARMINGTON HILLS** Contemporary is lovely with many extra features and fantastic treed lot! 5 bedrooms, 3 1/2 baths, cathedral ceilings, viewing gallery, jacuzzi room, family room, great room, formal dining, 1st floor laundry, patio, deck and central air. \$314,900 626-9100



Perfect executive home in **FARMINGTON HILLS** has it all! Upstairs, dream kitchen, neutral decor, 4 bedrooms, 3 1/2 baths, formal dining, library, rec room, family room, central air and patio. Treed setting, plus jacuzzi, sauna and in-ground pool. Land contract available. \$299,900 626-9100



Three bedroom Colonial is located in lovely Church Commons and offers 1 1/2 baths, formal dining, family room with fireplace, open kitchen, neutral decor, central air, patio, porch, crown moldings and nice neighborhood. \$129,900 626-9100



**FARMINGTON HILLS** Colonial is situated on nicely treed lot and features 4 bedrooms, 1 1/2 baths, formal dining, family room with fireplace, vaulted, updated kitchen, 1st floor laundry, central air, patio and deck. \$129,500 626-9100



Lovely 4 bedroom Quad-Level in **FARMINGTON HILLS** offers 2 1/2 baths, formal dining, family room, fireplace, porch, and large wooden deck overlooking commons and pond. Situated on premium lot plus beautifully landscaped and maintained. \$137,500 626-9100



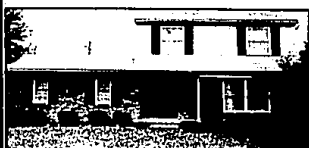
Designed for family living, this custom built home is presently situated on large treed lot complete with its own pond. Distinctive interior with 4 bedrooms, including master suite with jacuzzi bath, library, family room with fireplace. \$275,000 626-9100



Quality built and tastefully decorated, the **FARMINGTON HILLS** Ranch offers 4 bedrooms, 2 1/2 baths, living room, hardwood floors, formal dining with skylight, and patio. Attractively landscaped. \$82,000 626-9100



Open floor plan and large kitchen enhances this **FARMINGTON** Ranch with 3 bedrooms, 2 baths, family room, central air, full basement, patio and porch. Well maintained. \$132,500 626-9100



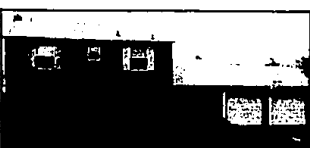
**FARMINGTON HILLS** Colonial is charming with open floor plan, formal dining, 3 bedrooms, 1 1/2 baths, stepdown family room with brick fireplace, large patio and 2 car garage. \$118,999 626-9100



Quality features abound in this **FARMINGTON** Farmhouse with 3 bedrooms, 1 1/2 baths, formal dining room with French doors, hardwood floors, Florida room, fireplace, patio and stand-up attic. Park like setting. \$119,900 626-9100



**SOUTHFIELD** bungalow is sharp with 3 bedrooms, well equipped kitchen, finished rec room, 2 1/2 baths, central air and garage. Move-in condition plus treed lot. \$65,900 626-9100



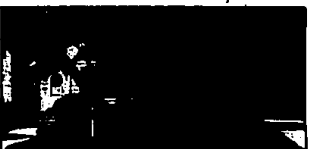
**FARMINGTON HILLS** Colonial is a wonderful family home with 4 bedrooms, 2 1/2 baths, newer carpeting, formal dining, family room, den, fireplace, central air and patio. Wonderful location plus backs to commons. \$139,500 626-9100



**SOUTHFIELD** Spacious Mt. Vernon Colonial offers hardwood floors, library, formal dining, family room, fireplace, 1st floor laundry, 4 bedrooms, 2 1/2 baths, central air and patio. Finished basement. \$104,000. 626-9100



**FARMINGTON HILLS** Charming 3-4 bedroom Colonial features excellent floor plan, built-ins, large kitchen, 2 1/2 baths, family room with fireplace, formal dining, 1st floor laundry, central air and deck. \$136,500 626-9100



Enjoy this charming Cape Cod in downtown **FARMINGTON** with 4 bedrooms, 1 1/2 baths, living room with fireplace, updated kitchen, formal dining, screened porch and many updates. Excellent condition. \$114,500 626-9100



Spanish style Quad-level in **FARMINGTON HILLS** boasts private treed setting, spacious family room with full wall brick fireplace, 4 bedrooms and 2 1/2 baths. Porch, patio and large walk-out deck. Immediate occupancy. \$148,900 626-9100

Birmingham/Bloomfield

1520 N. Woodward

Off Long Lake

646-6000

Franklin Farmhouse

626 9100

North/Northville

478 5000

Day

689 8900

West Bloomfield

651 8850

West Bloomfield

1111 Orchard Lake Rd.

Off Long Lake

851-8100

## Merrill Lynch Realty



Real Estate Offices Open Monday Friday 9 a.m. - 6 p.m. SATURDAY 10 a.m. - 5 p.m.