



**BLOOMFIELD
CUSTOM KITCHENS**

those unaccustomed to compromise

**We will design
your kitchen
to suit your lifestyle**

644-5444

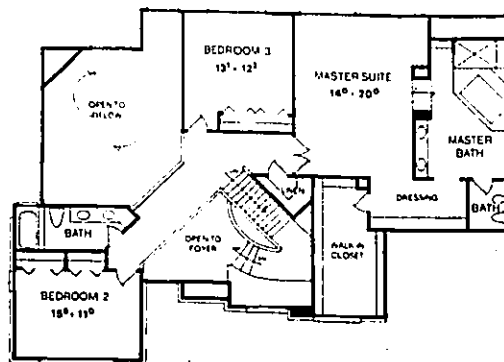
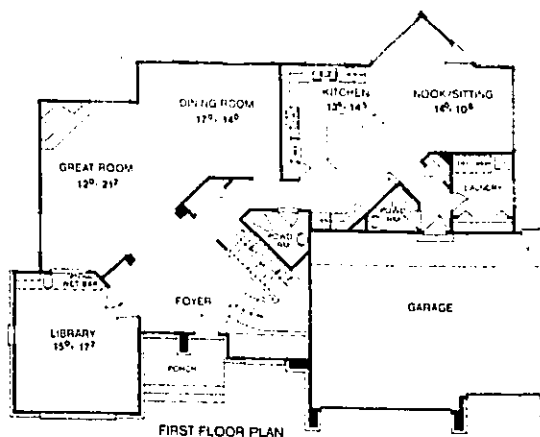
NKBA
NATIONAL KITCHEN BUREAU ASSOCIATION

4068 west maple road, birmingham, michigan, 48010

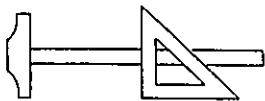


The Tri-Star

The contemporary split rock and wood siding of the Tri-Star model is highlighted by a unique glass block wall. The dramatic, two-story foyer with floating, semiradius stairway, leads to a bridge which overlooks the great room. Exclusive to this model is a see-through feature which guides the eye from the foyer through the interior to a two-story, stacked pyramid of windows at the rear of the home. The custom kitchen/nook features island snack bar, European appliances, built-in pantry, Corian table and counters and informal seating area. The luxurious master suite has a cathedral ceiling, sitting room with romantic see-through fireplace to whirlpool, and spacious his/hers walk-in closet and dressing room. In the \$300,000-\$350,000 price range. About 3,300 square feet. Interior design by Kevin McManamon.



Custom Landscape Designs & Installation



OUR SERVICES INCLUDE:

- Landscape Designs & Consultations
- Landscape Installation
- Hydroseeding
- Retainer Walls
Upright & Horizontal Ties, Boulders
- Patios, Walkways & Drives
Brick, Concrete & Flagstone
- Decks & Gazebos
- Spas
- 12 Volt Lighting Systems

JACKSON
LANDSCAPING, INC.

670 GRISWOLD • SUITE 3
NORTHVILLE

DESIGN OFFICE
349-4950