

## exhibitions

• **ALICE SIMSAR GALLERY**  
Friday, Sept. 16 — "Counterparts: Tables and Still Lives," a provocative theme for an exhibit featuring works by 18 outstanding artists. Reception from 5-7:30 p.m. Friday. Hours are 10 a.m. to 5:30 p.m. Tuesday-Saturday, 391 N. Main, Ann Arbor.

### • FEIGENSON/PRESTON GALLERY

Friday, Sept. 16 — New works by gallery regulars will be on display through Oct. 14. Reception for the artists from 5-6 p.m. Friday. Hours are 11 a.m. to 5 p.m. Tuesday-Saturday, 796 N. Woodward, Birmingham.

### • NORTHERN MICHIGAN UNIVERSITY

Saturday, Sept. 17 — "1988 Motor City Revue" features works of 23 Detroit area artists, curated by Michigan Gallery of Detroit. Opening reception is from 7-9:30 p.m. Saturday. The project, part of an exchange between Michigan Gallery and the university, is paid for in part by Michigan Council for the Arts. Lee Hall Gallery, Marquette.

### • DETROIT ARTISTS MARKET

Friday, Sept. 16 — All-media show, juried by Pam and Tim Hill, continues through Oct. 7. Exhibit showcases some 100 works by emerging artists from southeastern Michigan. Hours are 11 a.m. to 6 p.m. Tuesday-Saturday, 1452 Randolph, Detroit.

### • SOUTHFIELD PARKS AND RECREATION BUILDING

Monday, Sept. 19 — Chinese art works are on display through Saturday, Oct. 1. The exhibit is part of the Moon Festival celebration. Hours are 9 a.m. to 9 p.m. Monday-Friday, until 5 p.m. Saturday. Reception 7 p.m. Friday, Sept. 30. Watercolors by Judith Sokol and jewelry by Melissa Plotkin are on display through Friday, 26000 Evergreen, Southfield.

### • SIDE STREET GALLERY

Special showing of African art continues through Saturday. Hours are noon to 5:30 p.m. Tuesday-Friday, until 3 p.m. Saturday, 912 S. Woodward, Suite 100, Birmingham.

### • THE COMMUNITY HOUSE

Oil paintings by Freda Kroll and pastel, charcoal and oils by Bette Pruden are on display during September. Their art hangs throughout the building, 380 S. Bates, Birmingham.

### • DAVID JENSEN CORPORATION

Friday, Sept. 16 — Paintings and illustrations by Chuck Wilkinson are on display in the reception gallery through Sunday, Sept. 18. The opening reception is from 7-10 p.m. Friday. Hours on Saturday are 10 a.m. to 5 p.m. and on Sunday 1-5 p.m., 595 D. Elton, Birmingham.

### • SUSANNE HILBERRY GALLERY

"Clarice Cliff, Ceramics of the

1930s" continues through Oct. 7. Hours are 11 a.m. to 6 p.m. Tuesday-Saturday, 555 S. Woodward, Birmingham.

### • ARTERIA

New abstract paintings by Pat Mayhew, Picasso-like figurative sculpture by Tom Palazzola, Post-

Impressionist landscapes by Earl Robins and watercolors by Julie Dawson are on display along with 19th century lithographs, chroma lithographs, photographs and etchings. Hours are 9:30 a.m. to 5:30 p.m. Tuesday-Saturday, 112 Brownell, Birmingham.

## briefly speaking

### • NORTHVILLE AUTUMNFEST

The Northville Arts Commission will hold a weekend of art and entertainment this weekend during the second annual art market and autumnfest in downtown Northville. Hours are noon to 6 p.m. Friday, 10 a.m. to 6 p.m. Saturday and Sunday.

The attractions include displays and demonstrations by a number of regional artists on the streets of historic downtown Northville.

### • PRESIDENTIAL PORTRAITS

Livonia Mall will host an exhibit of U.S. Presidents and First Ladies. Full color oil paintings by Lawrence Williams will be on display starting tomorrow and continuing through Sept. 29. Williams has been a dominant force in American portrait painting for over 50 years. His worldwide reputation as a truly outstanding artist has made his portraits the most sought after in history.

For more information, call 476-1166. Livonia Mall is located at Seven Mile and Middlebelt roads.

### • SYMPHONY AUDITIONS

Audition opportunities are available for musicians for the Livonia Symphony Orchestra, formerly the Oakway Symphony.

The new orchestra will provide an opportunity for professional, college and upper high school musicians to perform in a community orchestra. Private study is required of high school students.

Auditions will be held from 5-7 p.m. Friday-Saturday, Sept. 16-17 in the music wing of Madonna College, 3600 Schoolcraft Road, Livonia. There is a particular need for all strings, tuba, trumpet, and French horn. Conductor is Francesco Di Biasi.

To make an audition appointment, call 421-2000, Ext. 351 Monday-Friday, 8:30 a.m. to 5 p.m.

### • MONET SLIDE LECTURE

Nancy Good, internationally known writer/photographer, will present a slide lecture on the gardens of Claude Monet. The program will be held from 7-9 p.m. Wednesday, Sept. 21 in the Carl Sandburg branch of the Livonia Public Library. Registration may be made in person at the library, 30100 Seven Mile Road, or by calling 476-0700.

### • VAAL FALL CLASSES

VAAL fall classes start the week of Sept. 26. Day, evening and Saturday classes are planned in drawing, oil, watercolor, monoprinting and pen and ink. For more information, call 464-6772 or 421-3207.



Arbor Village

...In the CHARTER TOWNSHIP OF CANTON

Arbor Village Condominium was built to provide practical living for many different lifestyles. Each residence is provided with a covered carport for your convenience.

features include:

- full basement
- ceramic tile baths
- skylights
- dishwasher, refrigerator, range
- central air
- fully carpeted
- fireplace (option)
- 1st floor laundry hook-up\* (option)

**Priced from \$71,900**

MODEL HOURS Daily & Sunday 10-6 P.M.  
MODEL PHONE 397-8080

Ranch\* and Townhouse Styles

A PALMER SHELTON DEVELOPMENT  
Built by: S.R. JOHNSTON CO.



Bridgetown

Nice wooded site nestled in the quaint

**Village of Chelsea**

2-3 Bedroom Ranch  
2-3 Bedroom 2 story

FROM

**\$98,000**

All Units Feature: Full basement, Andersen wood windows, ceramic tile kitchens & bathrooms, high quality stain resistant carpeting, attic fan, disposal, dishwasher, microwave, solid oak cabinetry, garage, patio deck and more.

**MODELS OPEN**  
Daily 1 p.m. - 8 p.m.  
Sat. & Sun. 12 p.m. - 5 p.m.

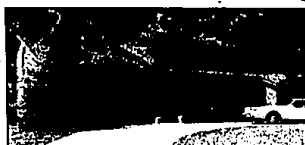
1-84 Chelsea exit, north 1/4 mile to light (Old US-12) then turn left 500 ft.

**475-7810**

## Merrill Lynch Realty



Lovely Two Story Contemporary in exclusive Rumblewood Gatehouse Community. Private wooded lot. Beautifully finished walkout lower level with complete 2nd kitchen, 5th bedroom, family room and hot tub room. First floor master bedroom suite. Many extras. \$314,900 626-9100 2-B-1166



FARMINGTON HILLS. Absolutely beautiful 4 bedroom home is situated in lovely wooded setting and offers formal dining, library, 3 1/2 baths, full finished walkout basement plus deck overlooking creek with small island. \$269,500 851-6100 6-B-1553



Understated elegance abounds in this recently completed FARMINGTON HILLS home! Professionally decorated and landscaped, jacuzzi in master suite, sprinkler system and large deck. \$264,900 851-6100 6-B-1228



FARMINGTON HILLS. Country Charm on almost two acres! Spacious 4 bedroom Colonial offers superior quality throughout with hardwood and pegged floors, moldings, 6 panel doors, 2 1/2 baths, family room, central air and deck. \$259,900 851-6100 6-B-1558



This FARMINGTON HILLS Colonial features stunning amenities including neutral decor, oak spiral staircase, crown moldings, 2 bay windows, 6 panel doors, beamed family room with fireplace, library, central air, deck, full walkout basement, 4 bedrooms, and 2 1/2 baths. \$249,900 626-9100 2-B-1561



Charming and elegant Tudor located in popular Woodcreek home is situated in lovely wooded setting and offers formal dining, library, 3 1/2 baths, library, family room, 2 fireplaces, 6 panel doors, central air, patio and is recently redecorated. \$228,000 626-9100 2-B-1566



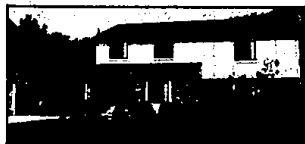
Quality built Contemporary Ranch overlooks stream on wooded ravine lot. Ceramic foyer, beamed cherrywood family room, neutral decor, 3 bedrooms, 2 1/2 baths, formal dining, fireplace, central air, private sun deck and sunken tub plus 3 car garage. \$199,900 626-9100 2-B-0803



GREEN LAKE FRONTAGE! Enjoy the fantastic views from this 3 bedroom Contemporary with family room, fireplace, 1st floor laundry, deck and 2 car garage. Sandy beach plus good WEST BLOOMFIELD location. \$189,900 626-9100 2-B-1318



This FARMINGTON HILLS Colonial in excellent location is beautiful with hardwood floors, updates, formal dining room, family room, library, 1st floor laundry, central air, patio, new carpeting and two car garage. \$179,900 626-9100 2-B-1550



The heavily wooded private backyard on commons is a definite bonus to this attractive, well maintained 3 year old FARMINGTON HILLS Colonial with over 2,000 sq. ft. of living space. Large open kitchen, 2 story foyer, great room, fireplace, 3 bedrooms, 2 1/2 baths, central air and multi-level deck. \$164,500 626-9100 2-B-1559



Reduced for quick sale! Attractive FARMINGTON HILLS brick Colonial features neutral decor, 4 bedrooms, 2 1/2 baths, formal dining, family room with fireplace, 1st floor laundry and patio. Excellent location in sub and freshly painted interior and exterior. \$149,900 626-9100 2-B-1020



Energy efficient features including new solar system are offered in this FARMINGTON HILLS Colonial with 4 bedrooms, 2 1/2 baths, family room, fireplace, formal dining, rec room, 1st floor laundry, central air, patio and private treed setting. \$138,500 626-9100 2-B-1129



Park-like setting enhances this 3 bedroom WEST BLOOMFIELD Colonial with newer carpeting, family room with fireplace, 1 1/2 baths, central air, patio and prime location. \$129,900 626-9100 2-B-1489



Three bedroom Colonial is located in lovely Churchill Commons and offers 1 1/2 baths, formal dining, family room with fireplace, open kitchen, neutral decor, central air, patio, porch, crown moldings and nice neighborhood. \$122,800 626-9100 2-B-1313



Open floor plan and large kitchen enhances this FARMINGTON Ranch with 3 bedrooms, 2 baths, family room, 1st floor laundry, central air, full basement, patio and porch. Well maintained plus tree yard and garden area. \$122,800 626-9100 2-B-1304



SOUTHFIELD Contemporary is situated in lovely treed yard and offers new carpeting, family room, fireplace, wet bar, rec room, formal dining, 4 bedrooms, 2 1/2 baths, central air, patio and wonderful decking. \$119,900 851-6100 6-B-1292

Birmingham/Bloomfield

1529 N. Woodward  
and East Lake  
**646-6000**

**Merrill Lynch Realty**

Franklin County  
626-9100

North/Northville  
478-5000

West Bloomfield  
689-6000

Merrill Lynch offices open Monday-Friday 9 a.m. to 6 p.m.