

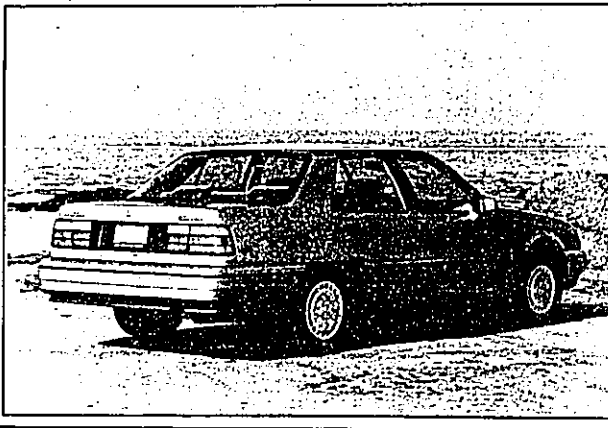


New Infiniti line launched

Infiniti, the luxury car division of Nissan Motor Corporation in USA, will be introduced at the Detroit Auto Show in Cobo Hall Jan. 7-15. Offered in the new line are a V-8 four-door luxury sedan, a V-6 sports coupe and a V-6 convertible based on the coupe. A four-door sedan will also be added to the Infiniti line in the second model year. Shown here is the Infiniti Q45 with a 4.5-liter, 32-valve, high-performance V-8 engine. Among the first new dealers will be Marvin Tamaroff of Southfield and Hoot McInerney of Bloomfield Hills.

Mid-size Hyundai rolling into U.S.

The mid-size Hyundai Sonata, new for 1989, is being launched at Hyundai dealerships around the nation. Included in the Sonata's long list of standard features are a 2.4 liter four-cylinder engine with electronic fuel injection, power rack and pinion steering, power-assisted ventilated front disc brakes, a tilt steering column, tachometer, digital quarter clock and more. Suggested retail price is \$9,695. The Sonata follows by nearly three years the introduction of the Excel subcompact.



Autobahn motors
Visit The Auto Show Here!

MAZDA
VOLKSWAGEN
PEUGEOT

 **NOTHING ELSE FEELS LIKE IT**

WE WILL NOT BE UNDERSOLD

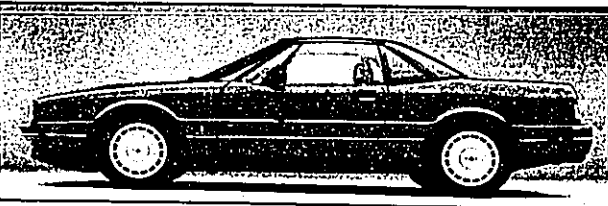
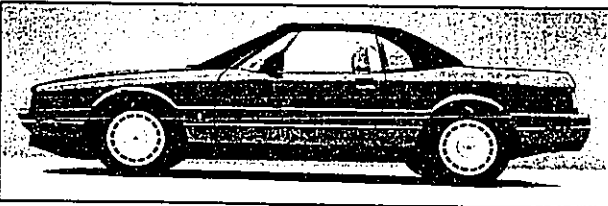
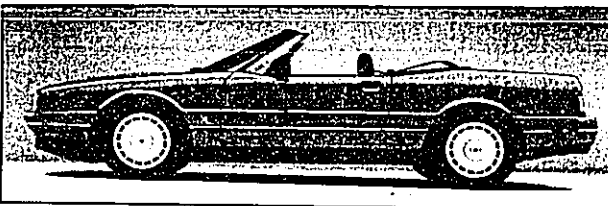
338-4531

Autobahn motors

We've been here for 25 years!

Square Lake Pk.

On Telegraph One Mile North Of Square Lake Road



Power boost for Allante

Cadillac Allante, the two-passenger flagship of one of America's luxury cars, receives a major power increase for 1989. A new 4.5-liter V-8 engine developing 200 horsepower propels Allante from 0-60 mph in less than 8.5 seconds and to a top speed of 135 mph. Additional refinements include softer leather seating and door panels, new standard interior trim color (charcoal) and a new exterior color (light blue metallic).