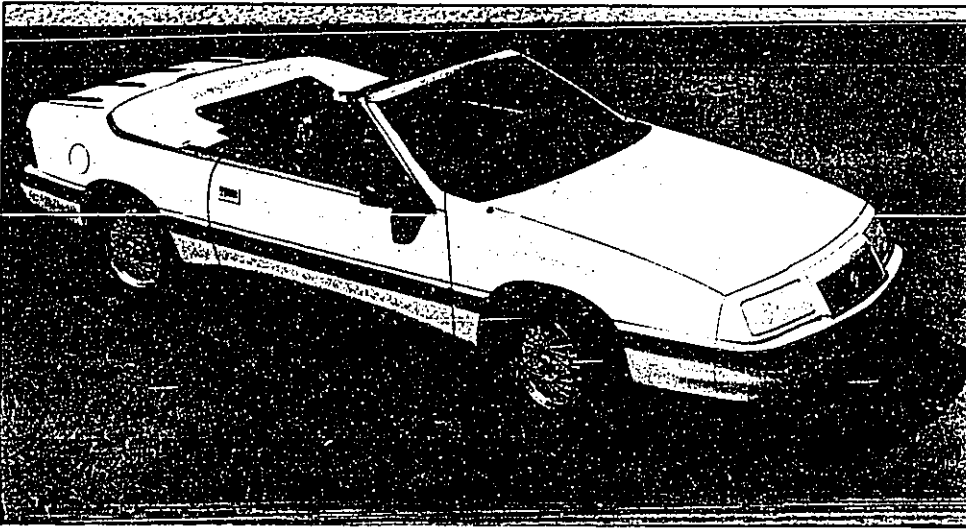


Chrysler's new sporting ways



The best-selling Chrysler LeBaron convertible is made even better for 1989 with the choice of two turbo engines, standard 4-wheel disc brakes, and driver's side airbag. High-image GTC is equipped with special exterior and interior features, luggage rack, larger tires and heavier duty suspension.

The latest entry in the Chrysler LeBaron series is the high-image GTC coupe, a more performance-oriented version of the aerodynamic 2-door available in base high-line and premium-price classes. All LeBaron coupes for 1989 offer new turbo engines.

