

# Muirwood plan to be resubmitted

Continued from Page 1

The DDA opposed the rezoning and proposed expansion, with plans for the Shopping Center Market to serve as an anchor, because: "New commercial development within close proximity to downtown areas has destroyed many downtowns" and "further commercial development on the northwest corner of Grand River Avenue and Drake Road threatens to destroy the viability of downtown Farmington."

Bextak's approximately \$10 million plans included demolishing about 30,000 square feet of the existing center, leaving 21,000 square feet of existing buildings and building 84,000 square feet of new retail space, half of it devoted to the proposed supermarket. Current tenants would be relocated.

The Farmington Hills Planning Commission denied the rezoning Feb. 16 in a 5-3 vote. Its denial came after city planning consultant Claude Coates recommended approval. He said the rezoning "would not be a significant change" to the city's master plan, which designates the property as multiple family.

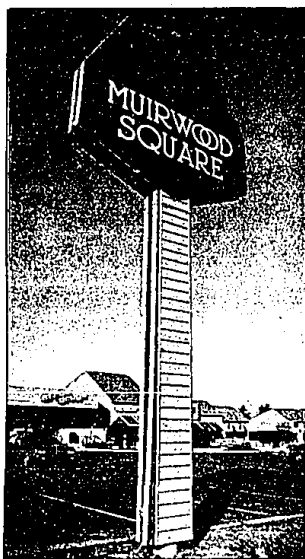
The majority of planning commissioners voting against the rezoning request held concerns with traffic, a change in the master land use plan and a possible change in the area's character.

"We'll be working with traffic engineers and MDOT to analyze the intersection and the current efficiency or lack of efficiency at the intersection," said Bob Meehan, Bextak development officer. "We're trying to address what can be done, whether the efficiency of the intersection can be improved."

Meehan said Bextak also plans to work with residents near the Drake-Grand River shopping center who are concerned about existing traffic and increased problems if the center expands.

"We have to do something. The center is in very serious shape," Meehan said.

Though Bextak officials wanted extra time to study the traffic concerns, they had no choice but to withdraw their request. Once submitted and involved in the rezoning process, a request cannot be postponed by the proponent, only the city council, senior city planner Ed Gardiner said.



RANDY BORST/staff photographer

Bextak Building Co. foresees a change in marketing strategy at Muirwood Square shopping center, Grand River at Drake.

If Bextak resubmits the rezoning request, its plans do not have to differ from the original ones. "On rezoning, they can come back as many times as they want," Gardiner added.

Bextak's plans called for using only six of the 12 acres for expansion. The remaining six would be kept in a natural state or used for a recreation center for nearby Muirwood Apartments.

# Cities eye ways to pay for library expansion

By Joanne Meliszewski  
staff writer

The Farmington and Farmington Hills city councils will hear options Wednesday night for expanding the Farmington Hills branch of the Farmington Community Library.

Library trustees will meet with the two city councils, the library's major financing sources, at 7:30 p.m. Wednesday, March 15, in the auditorium of the Hills branch, 32737 12 Mile.

"We will be discussing how to finance it (the proposed expansion)," library director Beverly Papal said.

A recently resurrected district library bill in the state Senate would give the library independence and taxing authority. Senate bill 140, and accompanying bills 141 and 142, could be reported out of the Senate's local government committee and onto the Senate floor for debate and vote within the week, Papal said.

IN THE bill's absence, library officials can ask both city councils for a resolution to place a bond issue before voters to pay for the proposed expansion, Papal said.

The Troy-based Minoru Yamasaki Associates architects will present the city councils with an analysis of the library's current site and estimates of the cost of expansion.

The expansion, a priority in the library's five-year plan, must accommodate a projected resident population of 103,000 in 2015. Expansion must provide space for public seating, collection growth and flexibility for the future, Papal said.

Farmington and Farmington Hills officials aren't denying the library's cramped conditions. The question is how an expansion would be financed. The need for expansion is demonstrated in the library's latest circulation statistics, number of patrons daily and the amount of materials housed.

Daily, 1,400 patrons walk through the doors Monday-Thursday. During

the seven open hours on Saturdays, 1,000 patrons come in. The same is true for the four Sunday hours.

"This building was designed to accommodate the public needs for 20 years when it opened in 1972," Papal said in January.

THE NUMBER of patrons in the library, plus all the materials and equipment, has forced library officials to open the auditorium and conference room — generally used for programs — for seating.

Another problem is the lack of space to store materials. To make more shelf space, the library would have to reduce patron seating, Papal said.

In 1987-88, library patrons checked out 577,894 books, magazines and audio-visual items. The library consistently led all 59 member-libraries of the Wayne-Oakland Library Federation in the amount of materials circulated, according to the library's annual report.

# No charges in fatal crash

Charges won't be lodged against either driver in a Feb. 14 traffic accident in which a 10-year-old West Bloomfield girl died.

The accident occurred at 14 Mile and Drake on the Farmington Hills/West Bloomfield border.

"The case is closed," said Sgt. Mike Madigan of the West Bloomfield Police Department. "There is no point in prosecuting."

Holly Pawl, a fourth grader at Twin Beach Elementary School, died as a result of the collision. She was with a brother and sister in the fami-

ly's Jeep Wagoneer driven by their mother, Gail Pawl.

Witnesses said Pawl was driving south on Drake when she stopped for a stop sign then drove into the intersection. Fourteen Mile has no light or stop sign.

The Jeep was struck in the left rear section by a westbound car driven by Mary Foran of Farmington Hills. The force of the crash spun the Jeep around. The three children, who were not wearing seat belts, were in the rear well of the Jeep

with the seat folded down.

MADIGAN SAID the force of the crash opened the rear window, but left the door beneath it closed and locked. The centrifugal force created by the spin threw Holly from the Jeep. She died later that day of head injuries.

In a second two-car accident the same day, both drivers received minor injuries. Since that time, officials from both communities have gone ahead with plans for a traffic signal.

## Farmington Observer

(USPS 187-840)

Published every Monday and Thursday by Observer & Eccentric Newspapers, 1225 Bowers, Birmingham, MI 48012. Second-class postage paid at Birmingham, MI 48012. Address all mail (subscription, change of address, Form 3569) to P.O. Box 2428, Livonia, MI 48151. Telephone 591-0500.

**SUBSCRIPTION RATES**  
(in Oakland County)  
One year . . . . . \$24.20  
(Elsewhere in Michigan)  
Newstand . . . . . per copy, 25¢  
One year . . . . . \$40.00  
(Elsewhere in U.S.A.)  
One year . . . . . \$60.00

All advertising published in the Farmington Observer is subject to the conditions stated in the applicable rate card, copies of which are available from the advertising department, Farmington 33203 Grand River, Farmington, MI (313) 477-5450. The Farmington Observer reserves the right not to accept an advertiser's order. Observer & Eccentric ad-takers have no authority to bind this newspaper and only publication of an advertisement shall constitute final acceptance of the advertiser's order.

## Purse-snatch victim tells others to beware

The victim of a robbery at a Farmington grocery is warning others to watch their purses and belongings while shopping.

Trudy Quesada had stopped at the Farmer Jack store at Nine Mile and Farmington Road after work Feb. 24 to buy a birthday cake for a tenant. Quesada, a Detroit resident and a plant inspector for a Farmington Hills company, owns a residential building in Detroit and was buying a cake for a tenant's 21st birthday when the incident occurred.

TWO WOMEN working together tricked her into helping them. One distracted her by asking for help, while the other stole a change purse with more than \$300 in it, hidden inside her purse, which was in her basket under some groceries. They were so adept, she said, that she didn't realize she had been robbed until reaching the check-out and opening her purse.

"It was quite upsetting," she said.

"I hope other people will please be careful. If I see everyone, I'll tell them."

## \$200 REBATE AIR CONDITIONING SALE

Installed For As Low As \$1195\* City Permits Extra



Carrier 38 THDL 018 Shown

Our Engineers Aren't Comfortable Until You Are.

**TRU TEM**  
Heating & Cooling, Inc.

Garfield City 427-5812 Canton Township 951-5800

## AAA travel office goes Oriental

The Farmington AAA Travel Agency goes Oriental March 13-17 as it becomes the Forbidden City through costumed counselors, videos, displays and refreshments.

Travel experts will be on hand to

answer questions on everything from a Hong Kong shopping tour departing Nov. 16 to airline fares.

Travel enthusiasts can stop in from 9 a.m. to 6 p.m. at the Farmington Hills office, 33135 W. 12 Mile.

## COLLECTION SHOW



Hart, Schaffner & Marx  
Clothing Show  
Saturday, March 18  
Noon to 4 p.m.  
Men's Shop, Livonia  
Meet representative  
Jerry Lyskawa who  
will assist you in  
selecting your spring  
and summer suits,  
sport coats and slacks  
from our collection.  
He will also show  
you an additional  
selection of fabrics  
which may be tailored  
to meet your personal  
specifications.

Jacobson's

# AN EVENING OF JAZZ

The City of Southfield, Southfield Public Schools and the Southfield Eccentric cordially invite you to

a benefit performance for Southfield High School's  
REBUILD THE

library

• Tuesday, March 21, 1989  
• 7:30 p.m.

• Southfield Civic Center Pavilion  
Featuring the metro area's top  
jazz performers all under one  
roof in an evening of exciting music:

• Alexander Zonjic Quintet  
• Ursula Walker/Buddy Budson Trio  
• Onita Sanders  
• Orthola Barnes  
• George Benson and Friends

Advance Tickets: \$10 (\$12 at the door)

Tickets available at: City Hall Reception Desk (M-F 8 a.m.-5 p.m.) and Parks & Recreation Building Reception Desk (M-F 8:30 a.m.-8 p.m., Sat. 9 a.m.-4 p.m.) at the Southfield Civic Center, 26000 Evergreen Road (at 10 1/2 Mile Road).

Make checks payable to: SHS-Rebuild the Library Fund. Tickets are tax-deductible.

Additional donations are gratefully appreciated and can be mailed to the SHS-Rebuild the Library Fund, c/o The Southfield Eccentric, P.O. Box 187, Southfield, Michigan 48037.

For more information: City of Southfield Community Relations Department, 354-4854.

We welcome Jacobson's Charge, MasterCard, VISA, and American Express.  
Shop until 9 p.m. on Thursday and Friday. Until 6 p.m. on Monday, Tuesday, Wednesday and Saturday.