

REAL ESTATE CLASSES - ENROLL NOW
Call Pat Morgan 557-6700
Director of Training

Chamberlain

REALTORS®

SINCE 1948



OPEN SUNDAY 1-4

4082 St. Andrew Ct., Bloomfield Hills
South of Long Lake/West of Franklin
BRING YOUR OFFERS and be ready to have fun in your CONDO on the GOLF COURSE. Huge and luxurious multi-level home with walk-out lower level, sports decking with magnificent view of Haines Lake. 3 bedrooms, 3½ baths, two fireplaces. All Amenities! \$269,000 557-6700



OPEN SUNDAY 1-4

4276 Derry Road, Bloomfield
S. of West Long Lake/E. of Franklin
CUSTOM built 3 bedroom ranch with 2½ baths, family room, natural fireplace, formal dining room, remodeled kitchen, newer furnace and central air, attached garage and lovely pond view. \$179,900 (D-427) 851-4400



OPEN SUNDAY 1-4

31679 Leis Lane, Franklin
N. of 13 Mile/W. of Franklin
INCOMPARABLE PROPERTY is the setting for this fabulous Executive Ranch Home in historic Franklin. Wonderful flowing floor plan, TWO fireplaces and lavish use of glass allows year round beauty to flow indoors. \$285,000 557-6700



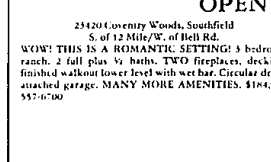
OPEN SUNDAY 1-4

5511 Lakecrest, Bloomfield Hills
S. of Long Lake/W. of Squirrel
ON PICTURESQUE WOOD LAKE. Attractive spiral level resting on 1+ acres of peaceful treed property. Away from the rush of everyday living it offers tranquility and relaxation. 4 bedrooms, 3½ baths. Much more. \$469,500 (L-551) 647-6400



OPEN SUNDAY 1-4

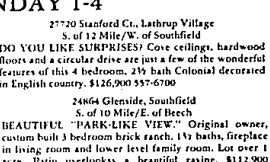
5929 Glen Eagle, West Bloomfield
S. of Walnut Lake/West of Farmington
LOVELY 4 bedroom contemporary with beautiful view of Shenandoah Golf Course and Woodcracker Lake. Family room with fireplace, 2½ baths, formal kitchen, ceramic foyer and attached garage. \$176,900 (G-592) 851-4400



OPEN SUNDAY 1-4

23420 Coventry Woods, Southfield
S. of 12 Mile/W. of Bell Rd.
WOAH! THIS IS A ROMANTIC SETTING! 3 bedroom ranch, 2 full plus ½ bath, TWO fireplaces, drinking, finished walkout lower level with wet bar, circular drive, attached garage. MANY MORE AMENITIES. \$184,900 557-6700

800 Wattle, Bloomfield Hills
S. of Wattle/W. of Adams
SMASHING CONTEMPORARY QUAD built in 1979. Densely wooded lot, circular drive and attached garage add to the flavor of this 4 bedroom, 3½ bath, family room with wet bar home COMPLETE WITH A HOME WARRANTY! \$169,900 557-6700



27720 Stanford Ct., Lathrup Village
S. of 12 Mile/W. of Southfield
DO YOU LIKE SURPRISES? Cove ceilings, hardwood floors and a circular drive are just a few of the wonderful features of this 4 bedroom, 2½ bath Colonial decorated in English country. \$126,900 557-6700

24864 Glenside, Southfield
S. of 10 Mile/E. of Beech
BEAUTIFUL "PARK-LIKE VIEW". Original owner, custom built 3 bedroom brick ranch, 1½ baths, fireplace in living room and lower level family room. Lot over 1 acre. Patio overlooks a beautiful ravine. \$112,900 557-6700

28717 Blackstone, Lathrup Village
S. of Southfield/S. of 12 Mile
MOVE RIGHT INTO THIS LOVELY 3 bedroom brick ranch. Formal dining room with bay window, finished basement, TWO fireplaces, newer double paneled windows and many more updates on a large lot. \$95,500 557-6700



OPEN SUNDAY 1-4

2718 Percheron, West Bloomfield
N. of Long Pine/W. of Middlebelt
SPACIOUS 4 bedroom colonial with Bloomfield Hills Schools, 2½ baths, family room with fireplace, formal dining room, large foyer and attached garage. \$169,700 (P-271) 851-4400



OPEN SUNDAY 1-4

1733 Pembroke, Birmingham
North of Maple/East of Adams
POPULAR PEMBROKE PARK. Sharp 3 bedroom ranch on private treed lot in terrific neighborhood. Family room with fireplace, central air, one-year-old furnace, patio, mini blinds throughout. \$101,900 (P-173) 647-6400



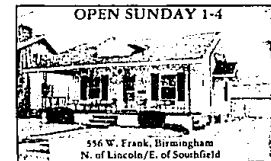
OPEN SUNDAY 1-4

6104 Worthington, Birmingham
W. of Telegraph/N. off Maple
BLOOMFIELD HILLS SCHOOLS. This home has it all! Birmingham mailing. Wing Lake privileges and plenty of storage. Totally updated with a contemporary flair. New kitchen, 3 bedrooms, 2 baths, family room. Must see! \$194,900 (W-609) 647-6400



OPEN SUNDAY 1-4

28159 Greencastle, Farmington Hills
S. of 12 Mile/E. of Middlebelt
SPARKLING clean 3 bedroom brick ranch on a nice large lot. Includes 2 full baths, family room, natural fireplace and attached 2 car garage with a work room. \$107,000 (G-281) 851-4400



OPEN SUNDAY 1-4

556 W. Frank, Birmingham
N. of Lincoln/E. of Southfield
WELL CARED for in-town ranch. Quiet street, great family area, 3 car heated garage with 220 power. Close to everything! Must see all the potential. \$134,900 (P-556) 647-6400



OPEN SUNDAY 1-4

2624 Valley View Dr., Troy
N. of Long Lake/E. of Adams
IMMACULATE 4 bedroom, 2½ bath Tudor with family room, library and finished lower level. Natural fireplace as well as French doors leading to deck with heavily treed yard. New inside and outside paint and much more! \$245,900 (VV-262) 641-1660



OPEN SUNDAY 1-4

29243 High Valley, Farmington Hills
N. of 10 Mile/W. of Farmington
IMMACULATE Dutch Colonial with neutral decor, 4 bedrooms, 2½ baths, huge family room with fireplace and French doors leading to a heated Florida room and an attached garage. \$177,900 (H-299) 851-4400



OPEN SUNDAY 1-4

15128 Parkwood, Huntington Woods
S. of Ludlow/W. of Scotts
BEAUTIFULLY decorated and well maintained home with over 2000 sq. ft., 4 bedrooms, family room plus Florida room, fireplace, updated kitchen and central air. \$165,000 547-2000



OPEN SUNDAY 1-4

4642 Bentley, Troy
N. of Wattle/W. of Crooks
OLD WORLD elegance with today's lifestyles, this 1987 Troy English Tudor has a stone courtyard entry, oak floor step-down family room with cathedral ceiling, fireplace and much more! \$232,900 (E-464) 641-1660



OPEN SUNDAY 1-4

50317 Stratford, Farmington Hills
S. of 13 Mile/E. of Haggerty
SPARKLING 4 bedroom colonial with 2½ baths, family room with fireplace, formal dining room, 1st floor laundry, central air, attached garage and extensive decking. \$181,700 (S-503) 851-4400



OPEN SUNDAY 1-4

23417 Sherwood, Huntington Woods
N. of 10 Mile/E. of Coolidge
GREAT condo living alternative with this 3 bedroom, 2 full bath one of a kind contemporary home. Fabulous 36 ft. skylight glass roof, central stereo system and much more, plus an in-ground swimming pool. \$128,900 547-2000



OPEN SUNDAY 1-4

12927 LaSalle Lane, Huntington Woods
S. of 11 Mile/E. off Coolidge
CONTEMPORARY 3 bedroom ranch on almost an acre lot. Open floor plan - great for entertaining! 2 fireplaces, library, family room, 1st floor laundry and Florida room. This is an invitation to spacious living. \$165,000 547-2000



OPEN SUNDAY 1-4

26074 Dundee, Huntington Woods
N. of Lincoln/W. of Woodward
CHARMING 4 bedroom English Tudor located in prime area. Modern kitchen, dining room, sunroom with ceramic floor, all appliances, family room overlooking well landscaped yard. Curved archways, crown moldings, leaded glass door and more. \$164,900 547-2000



OPEN SUNDAY 1-4

13346 Sherwood, Huntington Woods
S. of Lincoln/E. of Coolidge
QUALITY built custom home with a contemporary flair. Features a study and family room, huge master bedroom and private master bath, modern kitchen with Sub-zero and Jennie air built-ins, breakfast room and One Year Premier Protection Plan. \$153,000 547-2000



OPEN SUNDAY 1-4

10148 Kingston, Huntington Woods
S. of 11 Mile/W. of Woodward
SPARKLING and charming describes this 3 bedroom colonial with 1½ baths, cozy fireplace living room, beautiful dark oiled wood flooring, gracious formal dining room, finished basement and 2 car garage. \$98,500 547-2000



OPEN SUNDAY 1-4

4905 Crooks, Royal Oak
N. of 11 Mile/W. of Crooks
PROFESSIONALLY decorated Condo, neutral decor, energy efficient kitchen. Breathtaking courtyard with fountain, pool and perry room in peaceful surroundings. 1 bedroom, 1 bath large walk-in closet. \$48,900 (C-490) 641-1660



OPEN SUNDAY 1-4

1084 Stephen, Clawson
S. of Maple/E. of Crooks
WANTED! FAMILY for this Clawson 2 story, 3 very large bedrooms. Neutral decor. Spacious living room, family room and kitchen with eating space. Finished basement, garage and newer above ground pool for your summer enjoyment. \$86,900 (S-108) 647-6400

BERMINGHAM
647-6400

BLOOMFIELD
644-6788

ROCHESTER
651-4100

ROYAL OAK
547-2000

SOUTHFIELD/LATHRUP
557-6700

TROY
641-1660

WEST BLOOMFIELD
851-4400

A Member Of
The Travelers
Realty Network



For a career in real estate contact any of the offices above