

gardener's book nook

Marty Figley

"The Encyclopedia of Everlastings," Barbara Radcliffe Rogers, (\$19.95, hardcover, Weidenfeld & Nicolson) is a complete guide to these plants. The many color illustrations and the cross-reference of botanical and common names makes for pleasant easy use.

The climatic zone, when to harvest and how to preserve, are included. Directions are also given for preservation and use of particular supplies. Readers are encouraged to see the potential for beautiful everlasting everywhere and appreciate blooming weeds in open fields and along the side of the road.

"The New American Garden,"

Carole Ottesen (\$24.95, hardcover, Macmillan) is about a new American Revolution. Gardeners in this country have been copying English garden designs for years. This book demonstrates the use of plants which are indigenous to particular areas of the country and how they can be used to enhance the areas around homes, offices and public buildings.

The thrust is that landscaping and gardening should be treated as one with a goal of natural plantings and less maintenance. Working with nature is stressed. I especially like the series of photographs that show the same garden in various months and the subtle changes that occur. Included are chapters on ground covers, special interest plants and ornamental grasses. All geographical locations of the country are covered, so the book can travel.

A series of two small books, "The Harrowmuth Gardeners' Guide-Rock Gardens," edited by Katharine Ferguson, and "The Harrowmuth Gardeners' Guide-Ground Covers," edited by Jennifer Bennett (each \$9.95 paper, Camden House) address the specific concerns in the titles.

The first outlines the history of rock gardens, offers advice about the why and where and alternative no-mow suggestions for many areas of the yard. If a flowering rockery is in your plans, this book is for you. A list of rock garden societies is included.

The second deals with ground covers, including grass, and includes a chapter on wildflower meadows. The choice of plants suitable for ground

covers is quite lengthy and suggestions for innovative ways to use them is helpful.

Both books list plants, and contains excellent line drawings and descriptions, along with comments from eight botanists and horticulturists.

These books are published in Canada, therefore the comments about each plant's performance relates to the contributing editor's region of Canada. Zone maps at the back of the books will guide the reader so that their comments correspond to the correct zone in this country.

I predict these books will become favorites. A mail-order source is included.

NOTICE: The address for the book "Cooking for Lovers," reviewed last month, is: Furuta/Associates, P.O. Box 399F, Fallbrook, Ca. 92028, \$16.95.

Church announces 9th annual art show

The Congregational Church of Birmingham will sponsor its ninth annual Celebrate Life art show and sale June 17-25 at the church, 1000 Cranbrook, Bloomfield Hills.

Paintings, drawings, collages, hard and soft sculpture, graphics, photography, ceramics and fiber will be considered for inclusion.

Mary Denison of Birmingham will be the juror. She is a corporate art

adviser, collector, former art director of the Detroit Artists Market and

board member of the Detroit Institute of Arts and Cranbrook Academy of Art.

The prizes will be \$500, \$250 and \$100. The non-refundable entry fee is \$10 for each work, with a limit of two entries per person. The deadline for entry forms is Monday, June 5, and art must be delivered 1-7 p.m. Friday, June 9.

For information and entry forms, call 646-4511.

European trip announced

A 16-day tour, "Northern European Art History and Comparative Politics," will be given through Oakland Community College, May 15-31. Four leaders will be Marilyn Finkel, professor of art history at the college, and Gerald Faye of the college's political science department. Both have been leading groups to Europe for many years. There will be three credit hours of art history and three of comparative politics

available to OOC students.

The itinerary includes three nights in West Berlin, three nights in Munich, one night in Heidelberg and four nights each in Paris and London. The cost, \$2,895, includes round-trip airfare from Detroit, hotels based on double room, some meals, entrance fees and multilingual guide throughout.

For information, call Finkel, 737-2555 or Faye, 471-7644.

On The Water... BLUE HERON POINTE

Beachfront Cluster Homes
...in Northville Township

crystal clear waters for
Boating...
Fishing...
& Swimming

Priced From \$209,500

All this and more awaits you at Blue Heron Pointe. Featuring spacious ranch and 2 story luxury homes with walkout lower level and private decks/patios overlooking calm waters and sandy beachfronts.

(We Co-op with all Realtors)

BLUE HERON POINTE



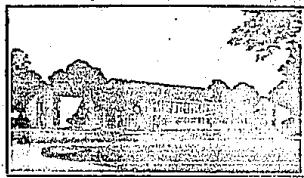
ON BECK RD.
1/4 MILE
SOUTH OF
SEVEN MILE
NORTHVILLE
TOWNSHIP

MODELS OPEN DAILY 1-6 PM (Closed Thurs.)

SALES CENTER 344-8809 WOLFE MARKETING AGENT

ROCHESTER HILLS KNOLLS NORTH

Special Pricing!



Luxury Living At Affordable Prices

Each condominium features 1600 square ft. homes with vaulted cathedral ceilings, atrium room with balcony. All units have custom kitchens, appliances, central air, fireplace, and split-level tub.

Distinctively Different...

- Underground heated parking
- Elevator
- Overlooking fairway of Great Oaks Country Club
- Security Foyer

Priced from \$149,000

Immediate occupancy

Models open Mon.-Fri. 1-6 p.m.

Sat. 1-5 p.m.

Call 651-7302



The Herman Frankel Organization Presents



WOODCLIFF ON THE LAKE

Come see Woodcliff on the Lake for yourself. Breathtaking is the only way to describe our newly furnished Models. When you see the panoramic views, you'll want to move right in.

Detached cluster condominium homes priced from \$314,500.00.

Open Noon to six p.m. every day except Thursday.

Main Office 683-3500

Sales Office 683-3502

Located west on Walnut Lake Road 1 1/2 miles past Orchard Lake Road to West Bloomfield Lake Road, turn right (north) 1/2 mile to Woodcliff on the Lake.



SOMERSET CHASE

OF TROY

Phase II Now Open



4 Models Open Daily

Our elegantly appointed homes are spacious living at its best. Our six different home plans offer generous allowances for light fixtures, carpet, ceramic tiles, marble and kitchen floors. These unique executive homes offer you the quality and distinctive life style you deserve. Come out today and walk through these spectacular homes.

1/2 Mile from
of Country
1/2 Mile from
1/2 Mile from
1/2 Mile from

In Troy
\$210,000 to \$265,000
Open daily 1-6 p.m.

Benecke & Krue Development Corporation

641-7709

642-8100

FARMINGTON HILLS - Spacious 4 bedroom home featuring beautiful new decor, handsome brickwork, delightful country kitchen, family room with full wall fireplace. Much More! The piece-de-resistance. A sparkling inground pool. Super area with acres of commons, walking paths and tennis courts. \$199,500 553-8700

WONDERFUL LIVONIA - at a really affordable price! The bedrooms, very open lot 85 x 111. Central air, Wayne-Westland Schools. \$105,900 261-5080

CANTON TWP. - TWO YEAR OLD, 4 bedroom Cape Cod 2 1/2 full baths, on large lot 85 x 111. Central air, Wayne-Westland Schools. \$105,900 261-5080

WEST BLOOMFIELD - Better Than New Executive Tudor, Birmingham schools, separate living quarters perfect for in-laws. Beautiful master suite with "his & her" baths and dressing area. Fabulous pool and surrounding grounds. \$329,900 553-8700

FARMINGTON HILLS - Surrounded by trees. A nature paradise! Full finished basement with family room, game room, workshop, Andersen windows, three bedrooms, 2 1/2 baths. Great area! \$115,900 553-8700

FARMINGTON HILLS - Feels like country, but close to town. Three bedroom, 2 1/2 bath ranch with almost 2200 sq. ft. Large rooms, 2 car garage. \$109,900 642-0703

LIVONIA - Private yard overlooking trees and lake. Large, bright 3 bedroom, 2 1/2 bath ranch. Formal dining room, fireplace in family room, 1st floor laundry, attached 2 car garage. \$145,900 642-0703

WEST BLOOMFIELD - Just Listed! Contemporary 2 story backing to private wooded area. Large family room with cathedral ceilings, 1st floor laundry, formal dining room, basement, split entry garage. Owners transferred. \$144,900 653-8700

NOV - Excellent Location, family room with fireplace, ceiling fan and doorwall leading to large deck. Oak cabinets, basement. Immediate Possession. \$110,500 553-8700

"JUST LISTED"



THOMPSON-BROWN

FARMINGTON HILLS
553-8700

BIRMINGHAM/BLOOMFIELD
642-0703

LIVONIA
261-5080