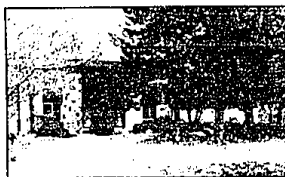




OPEN SUNDAY 1-4
NOTTINGHAM FOREST
 A great neighborhood for your growing family in this 5 bedroom home. Living and dining room, family room, plus a den and partially finished basement. \$274,000. 32297 Robinhood, S. off 14 Mile and W. of Lahser.



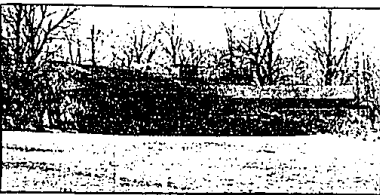
WOODCREEK HILLS
 Beautiful 4 bedroom, 2½ bath well maintained contemporary in a private wooded setting. Features a beautiful inground pool and private patio. Bright 2 story foyer and huge bedrooms. \$269,900. HAH-44376



BIRMINGHAM FINDI
 Lovely, quality built home in popular "Midvale Area." Gracious foyer, charming living room with fireplace, family room with fireplace, built-ins and wet bar! Has it all! \$284,500. FAY-44409



ROLLING OAKS
 Beautiful "Americana Model" nestled on a private setting backing to commons. Ceramic foyer, free form kitchen with doorwalls to wood deck and fabulous swimming pool. \$284,900. SPG-44374



LOVELY SUNNY RANCH
 With views from all windows. Quality construction with wet plaster and most hardwood floors. Spacious slate foyer, up-to-date kitchen, brick floor-to-ceiling fireplace and beautiful glassed-in porch. Over 1½ acre Bloomfield Hills lot! \$336,000. STH-



RALPH MANUEL
 ASSOCIATES • REALTORS

647-7100
 1821 W. Maple
 Birmingham--
 Bloomfield

851-6900
 32961 Middlebelt
 Farmington Hills -
 West Bloomfield

656-8900
 445 S. Livernols
 Rochester Hills -
 Sterling Heights

647-2030
 908 S. Adams
 Birmingham -
 Troy

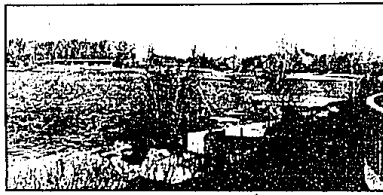
Relocation 1-800-R-MANUEL

• MEMBER OF EMPLOYEE RELOCATION COUNCIL •

IF YOU ARE MOVING ACROSS THE CITY OR ACROSS THE COUNTRY, OUR RELOCATION DEPARTMENT CAN MAKE YOUR MOVE SMOOTHER.







FABULOUS LAKE SHERWOOD LAKEFRONT
 Unique contemporary design with California drift-stone exterior, tiered waterfall pools, tennis court and extensive decking on the water. Home has dramatic architectural lines, 2-3 bedrooms, 3½ baths, and a finished walk-out, lower level. \$550,000. WID-44335



BIRMINGHAM ELEGANCE
 Many amenities throughout this elegant Colonial. Excellent quality features include marble foyer, pegged wood floors, alarm system, sprinkler system, 4 bedrooms, 3½ baths, walk-in closet and many built-ins. Birmingham Schools. \$349,000. STT-44242



PRIME FRANKLIN VILLAGE
 Contemporary in feeling, this 5 bedroom, 3½ bath home is a natural for the growing family. It's park-like setting is serene and beautiful. Fieldstone, hardwood floors, slate, loads of storage and much more. \$329,000. HEE-44178



MOVE RIGHT IN
 To this new home conveniently located in popular West Bloomfield sub. Library, 4 bedrooms, family room, wonderful master bedroom and bath with jacuzzi tub, large spacious kitchen and a 2 level deck. HAR-44360

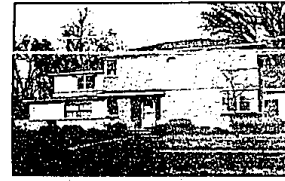
"WYNDHAM PLACE CONDOMINIUMS"



- Completely landscaped grounds including sprinkler system.
- Wood decks.
- Private entrance with masonry screen wall.
- Full basement.
- Two car attached garage with door opener.
- Energy efficient furnace and central air conditioning.
- First floor laundry room.
- Kitchen includes dishwasher, disposal, electric range, built-in self-cleaning oven and microwaves.
- Burglar alarm with motion detector and digital pad.
- Steel insulated entry doors.
- Double glazed insulated wood windows and doorways.
- Wood burning fireplace.
- Recessed lighting.
- Ceramic or oak in foyer, hall and kitchen.
- Carpeting throughout.
- No-wax linoleum in laundry.

Priced from \$169,900 to \$195,900.
 Located South of 14 Mile on the East side of Middlebelt

OPEN SAT. & SUN. 1-6



WEST BEVERLY HILLS
 Birmingham Schools! Excellent family home situated on a quiet street and a double lot. This contemporary Colonial features family room, 2 fireplaces, den and recreation room. \$225,000. HIT-44241



LOVELY PILLARED COLONIAL
 This beautiful home has a fully updated kitchen, new cabinets, floor, windows, counters and appliances. Newly finished basement, 4 bedrooms, den, 1st floor laundry and more! \$172,900. ASP-53



ROLLING OAKS
 Lovely Colonial nestled on a picturesque setting featuring gorgeous wood floors, large kitchen with doorwall to wood deck and views for all seasons. Beautiful family room with fireplace. \$149,900. HEE-44219.



OPEN SUNDAY 2-5
 3657 Shallowbrook
 E. off Telegraph, N. of Long Lake



EXCELLENT LOCATION
 In Birmingham for this unique older Farmhouse. Beautiful Great room and screened porch, wonderful in-law suite, large lot and newer pool. Decorate to your own taste! A great buy at \$205,000. PLT-44395



RAVINE SETTING
 Enjoy this lovely Colonial overlooking park-like wooded ravines. This 4 bedroom, 2½ bath home features a brick fireplace, central air, sprawling deck and more. Must see this value! \$132,000. BOL-71



SOUTHFIELD COLONIAL
 Attractive Colonial in a custom home area on a ¾ acre treed lot. Features include 3 bedrooms, formal dining room, 1st floor laundry and family room with beamed cathedral ceiling. \$89,900. EDS-44455



ROCHESTER CONDO
 Upper level ranch Condo offering neutral decor, 2 large bedrooms, central air, 1 car attached garage, great closets and storage in garage. Good value and location. Newly listed at \$82,900. MEA-25



NEW LANDSCAPING
 Is the setting for this lovely 3 bedroom brick bungalow with family room, garage, central air, alarm system, 2 fireplaces, hardwood floors and 2 full baths. All this for \$124,000. PEE-44243