



Tips for planting salad bowl garden

THE FUN, flavor and satisfaction of home-raised vegetables prompts millions of American homeowners to plant backyard gardens every year. But, until recently, those of us who live in apartments or simply lack the space, time and energy for full-scale gardening have had to settle for store-bought fare.

The recent development of modern, lightweight potting mixes and the availability of large, inexpensive containers has made it possible to raise prize-winning vegetables on a deck, patio or even in a sunny windowsill. Container gardeners are now raising tomatoes, peppers, even sweet corn in pots. Salad greens are among the easiest to grow and will make a beautifully decorative planter as well.

Here are some tips for planting your own salad bowl garden.

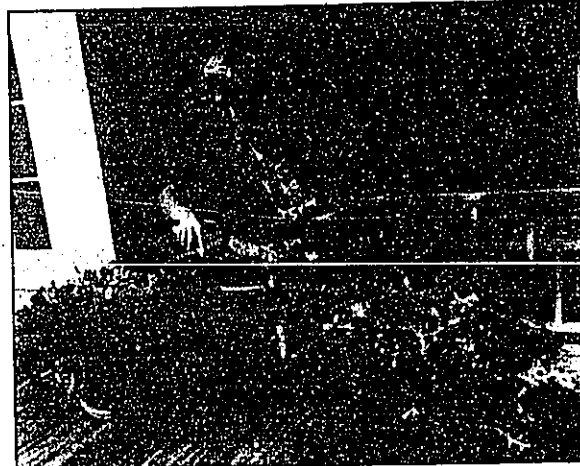
1. Select a wide-mouthed container at least five or six inches deep. Glazed

or unglazed ceramic bowls are excellent, but you may use any suitable-sized container provided it has drainage holes in the bottom.

2. Fill the container with a lightweight, soilless potting mixture designed for container-gardening. A good choice is Hoffman Container Gardening Soil Mix. This mix offers excellent air and water holding capacity so that plant roots will not dry out or be suffocated by compacted soil — a common problem with standard potting soils. Lightweight mixes need to be thoroughly dampened before planting.

3. Plant seed or started transplants from your garden center. The bowls in the photograph contain "Red Sails" lettuce, oak leaf lettuce, garden cress, parsley and other salad greens. Looseleaf, non-heading varieties of lettuce work best. Here are some other easy-to-grow, good-tasting vegetables to try.

• Swiss Chard. Resembles lettuce,



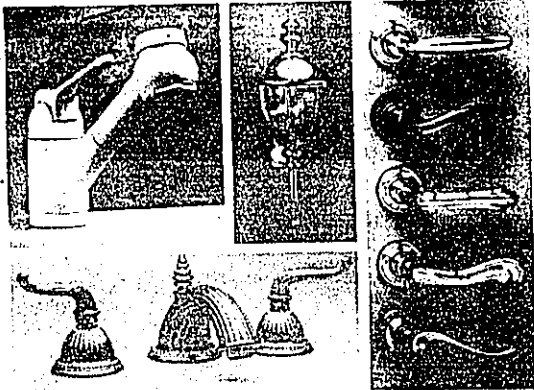
Salad bowl gardens can be grown spring through fall on a patio or deck and year 'round in a sunny spot indoors. This container gardener has planted bowls with several kinds of lettuce and herbs.

but doesn't bolt to seed in hot weather. Try the ruby red variety, "Ruby Red," inter-planted with green salad vegetables for a beautiful decorative

bowl.
• Scallions. Interesting to grow and a

Please turn to Page 13

HERALD WHOLESALE



EVERYTHING FOR YOUR HOME

- | | |
|---------------------------------------|--|
| Delta · Arrow · Baldwin · Hager | Bathroom Jewelry · Dornbracht |
| Hewi · Jado · Kwikset · Lawrence · | Bormix 80 · Bormalux · Sanijura · |
| Normbau · Dorma Door Closers | Keuco · Auburn Brass · FIR · Monarch · |
| Schlage · R.W.C. · Moen · Paul | Stanley · Broan · Nutone · Miami |
| Associates · Fusital Forges · Grohe · | Carey · Franklin Brass · Colonial Bronze · |
| Kohler · Vatti & Colombo | Plexacraft · Koch & Lowy · Bates |
| Aqua Glass · Steamist · Artistic | & Bates · Shulte · Baldwin Bath |
| Brass · The Broadway Collection | · Jacuzzi |

20830 COOLIDGE HWY. JUST NORTH OF 8 MILE RD. 398-4560
HOURS: 9-5:30 MON/FRI, 9-3 SAT, OR CALL FOR A SPECIAL APPOINTMENT ANYTIME.

Spring Price Thaw

Visit our beautiful new showroom and warm up to these fabulous values.



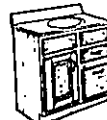
40% to 50% OFF LIST
2000 Stock Cabinets
DO IT YOURSELF or we can recommend qualified installers. Bring in your measurements for free designs

For many years we've carried the largest selection of kitchens, bathrooms, spas, and accessories in the area. If you have a building or remodeling problem, Acorn has the solution with quality products at the right price.



Neptune Double Compartment Stainless Sink
33 x 22 Double Bowl
\$28.95

Entire Stock of Vanities
40-50% OFF



335-0111 111 South Telegraph Road
Pontiac (across from Golling Plymouth, south of Telegraph-Huron Shopping Center)
Open Daily and Saturday 9:00 AM-5:30 PM
Monday and Friday 9:00 AM-8:00 PM