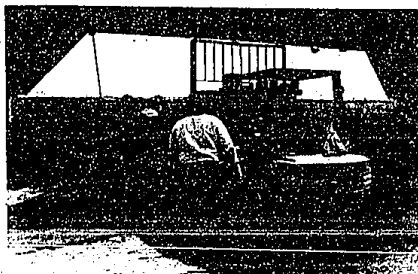


Oakland County to erect veteran's memorial



Oakland County employees receive the veteran's memorial, a sculpture by the late Birmingham artist Don Snyder. The 20-foot stainless steel work will be stored by the county until a site for it is developed. It'll be dedicated to the county's veterans.

A 20-foot stainless steel sculpture by the late Don Snyder of Birmingham has been delivered to the Oakland County Service Center.

The work was commissioned by the Oakland County Sesquicentennial Committee as the project for that celebration. It was fabricated in northern Michigan under the direction of Snyder's wife, Jo, also an artist. The sculpture will pay tribute to all men and women from Oakland County who have honorably served their country. It will be erected on a 5-foot granite base on which a plaque designating this tribute will be placed.

Originally the site of the memorial was to have been on the south lawn of the County Service Center," said Virginia DeBenham Rodgers, chairman for the Sesquicentennial celebration, "but difficulties arose in making the site accessible to the handicapped and it was proposed by the Commissioners to make it part

of the new county library site."

The county library placement is under consideration by the planning and building committee and the project is on hold.

"However," Rodgers said, "the sculpture is being stored on the complex and, working with our design department and the architects for the library, we will find the most visible and accessible presentation for the memorial and then begin to plan for a dedication, perhaps not this Memorial Day, but with all going well, plans can be made for a Veteran's Day tribute."

The sculpture was part of a competition with the winning work to be designed by a veteran.

Snyder served in the United States Marine Corps with the 4th Marine Division. He received the Purple Heart while serving in the Pacific and continued in the Marine Reserves after he was separated from active duty in 1945.

His 94-year-old mother, who lives in Minneapolis, said she is looking forward to the culmination of the project which focuses attention on her son's great dedication to the arts and his service to his country.

Powder puff party aids hall renovation

The Volunteer Council of the Detroit Symphony Orchestra Hall presents a Powder Puff Party beginning at 6 p.m. Sunday, June 4, in Orchestra Hall.

In place of the more refined musical renderings of the DSO, Orchestra Hall hosts a volunteer kazoo band and a powder puff chorus.

The show also features artists

from the DSO and a review. Also on stage will be Chet Bogan's Wolverine Jazz Band with lead singer Dixie Belle.

Proceeds go toward the restoration of the hall. The powder puff event focuses on renovation of the hall's rest rooms.

Tickets are available through the Orchestra Hall box office, 833-3700.

LAKE FRONT TUDOR PRIVATE BEACH
Impeccably maintained home sheltered under a majestic oak, with picturesque lake setting. Elegant updating & remodeling in warm tones within last 2 years. Skylights, Italian marble fireplace, new bright almond-oak kitchen, Parquet in living room & dining room, finished basement, alarm, sprinkler and central vacuum systems. Bloomfield Hills Schools. \$335,000

RALPH MANUEL
ASSOCIATES-WEST • REALTORS
335-7575 Contact Christine Gamero 851-6900

SAVE \$20,000
WALNUT HILLS CONDOMINIUMS
LAST CHANCE FOR A GREAT VALUE!

- Regularly Priced From \$154,990
- NOW SPECIAL CLOSE-OUT PRICES FROM \$136,150 ON LAST FEW REMAINING UNITS
- SOME WITH WALK-OUT LOWER LEVELS
- MOVE INTO AN ESTABLISHED COMMUNITY WITH ALL CONSTRUCTION COMPLETE

OCCUPANCY IN EARLY SUMMER
Open Daily 12-5 p.m. Closed Mon. & Thurs.
Location: South of Walnut Lake Road, 1 Block West of Drake Rd.
Come in today, ask Pat about our new special prices. **661-0338**

Herbert Lawton, Inc.
CO-OP BROKERAGE INVITED

© The pulse of your community ©

**SNEAK PREVIEW-
NEW CONSTRUCTION.**

**NEW
CUSTOM HOMES
COMING TO
DEARBORN.
CALL
441-5350**

YOU CAN'T SEE OUR HOMES FOR THE TREES...

**REAL ESTATE
AUCTION**

Wednesday, June 28, 1989 6:00 p.m.
Open to the Public

KNOX NORTH

**11 NEW LUXURY GOLF COURSE CONDOMINIUMS
IN ROCHESTER HILLS, MICHIGAN**
A total of 4 units will be sold absolute, regardless of price.

Suggested Opening Bid: \$50,000.
Currently priced to: \$179,900.

AMENITIES INCLUDE:

- Located at Great Oaks Country Club
- Rochester School District
- Quality sound-proof construction
- Generous 1,600 sq. ft. floor plan
- Woodburning fireplace
- Sundeck/patio or sunroom and balcony
- Fully appointed custom design kitchen
- 2 bedrooms/2 full baths
- Whirlpool master bath
- Individual gas furnace and air conditioning
- Additional individual storage locker

Excellent financing available to qualified owner occupants & investors.

Kelly Thomas Frank,
Michigan Real Estate Broker

**\$6,000 CERTIFIED ON CASHIER'S
CHECKS - NO PREPAID TO
LAWYERS' TITLE INSURANCE CO.
REQUIRED TO BID AT AUCTION**

Beginning Tuesday, May 30th, Knox North model & sales office will be open daily from 1:00 to 6:00 p.m.

Beginning Sat. June 3rd, all units will be available for inspection during open house weekends from 1:00 to 4:00 p.m. through the weekend date.

DIRECTIONS: Exit I-75 at 14.55, east to Crooks Road, north to Arvon Road, east to Jefferson Road, north to Green View Court and east into Knox North sales office.

For Brochure and Terms of Sale, Call:
Model (313) 651-7302
Chicago (312) 630-0915

SELDON GOOD & COMPANY
Real Estate Brokers • Auctioneers
through its affiliate Real Estate Auction, Inc.
333 W. Wacker Drive • Chicago, IL 60601
Chicago • Dallas • Denver • Ft. Lauderdale
Houston • Los Angeles • New York • San Antonio



Selective Shopping

If you're in the market for a new home, go Selective shopping. We've put information on six of our finest communities in a convenient bag to make your house-hunting easier. Inside, you'll quickly discover why Selective Homes are some of the most desired, from their attention to quality and detail to their distinctive good looks and beautiful surroundings. Call today for information on how you can go Selective shopping tomorrow.

SLIMLINE
Cluster condominium community
Southwest corner of 7 Mile & Center from \$174,950 348-3517

ESSEX CLUB
Detached condominium homes
On Holland Road north of 12 Mile from \$169,200 553-9270

WILLOW
Northwest corner of McCumpha & Ann Arbor Road from \$230,000 654-1519

STONEBRIDGE
South off Maple between Farmington Road & Drake Road from \$273,900 661-6554

Timber Ridge
South of 9 Mile West side of Novi Road from \$222,900 344-0325

Kirkley Dunes
Detached cluster homes
North of Long Lake on Franklin Road from \$309,500 334-1122

The Selective Group • 27655 Middlebelt • Suite 130 • Farmington Hills, MI • 474-8600
Bridges Welcome

MILFORD - 4708 Drithwood, (S. of Commerce Rd., E. of Duck Lake Rd.) LAKE SHERWOOD FRONTAGE. A well kept secret. Truly one of the most beautiful places on the lake. Walk-out. Five bedrooms, 2 full and 2 half baths. \$425,000. 553-4700

CANTON TOWNSHIP - 2 years young. 4 bedroom Cape Cod - 2 full baths, large lot 85 x 111, central air, basement. Wayne-Westland Schools. \$105,900. 553-4700

WEST BLOOMFIELD - Room to room inside & out - Birmingham Schools - Gourmet kitchen - Inviting master suite - Professionally decorated in neutrals - Only seeing is believing. This house has it all. \$218,000. 642-0703

LIVONIA - BEAUTIFUL PROFESSIONALLY LANDSCAPED & IMMACULATE 4 bedroom brick tri-level. Central air. Fireplace with custom glass doors in family room. Custom drapes. New roof in '88. Maintenance free aluminum trim. Insulated steel doors. Patio. \$144,900. 553-8700

FARMINGTON HILLS - Just like living in the country, but so convenient. Well maintained 2 bedroom ranch with lots of room for expansion. 2 fireplaces in living room & family room. Flare & paddock for horses. \$168,000. 553-8700

FARMINGTON HILLS - Charm - Privacy - Custom up-dated older home. Almost 5 acres of landscaped privacy in middle of everything. Three full baths, family room with large bay window and fireplace, basement, 2 car garage. \$329,000. 642-0703

PLYMOUTH TOWNSHIP - ATTRACTIVE COLONIAL. OUTSTANDING CONDITION. Three bedrooms, 1 1/2 baths, full basement, doorwall leads to patio & private yard. Easy access to X-way. \$107,900. 553-8700

LIVONIA - Real convenience comes with this nice three bedroom colonial. Family room, large open kitchen. Attached garage, basement, in-ground pool. Just in time for the summer. \$44,900. 642-0703

FARMINGTON - Beautiful starter home in the heart of Farmington. Walk to town. Excellent neighborhood. Cozy ranch. Attached garage. Wonderful yard. Assumable mortgage. Won't last! \$89,500. 553-8700

THOMPSON-BROWN

FARMINGTON HILLS 553-8700
BIRMINGHAM/BLOOMFIELD 642-0703
LIVONIA 261-5000