

datebook

- **BUSINESS COMMUNICATORS**
Thursday, June 8 — International Association of Business Communicators meets in Detroit. Information: Nancy Skidmore, 546-5490.
- **CPA CONFERENCE**
Friday, June 9 — "Accounting for the Tax Practitioner" conference offered 8 a.m. to 5 p.m. in Detroit. Fee: \$90. Information: Michigan Association of Certified Public Accountants, 855-2298.
- **BUILDERS ASSOCIATION**
Friday, June 9 — "Better Advertising for Homebuilders and Developers" seminar offered 8 a.m. to 5:45 p.m. in Southfield. Fee: \$245. Information: Builders Association of Southeastern Michigan, 737-4477.
- **CPA WEEKEND**
Friday-Sunday, June 9-11 — CPA weekend offers up to 29 continuing professional education credits in Rochester. Registration fee: \$25. Information: 370-3120. Sponsor: Oakland University.
- **ZERO-COUPON BONDS**
Monday, June 12 — "Understanding Zero-Coupon Bonds" offered 7:30-9:30 p.m. in Birmingham. Fee: \$12. Information: 644-5832. Sponsor: The Community House.
- **EMPLOYER CHILD CARE**
Monday, June 12 — "Diapers and Dollars — A Bottom-Line Issue" conference offered 8:30 a.m. to 5 p.m. at the MSU Management Education Center, 811 W. Square Lake Road, Troy. Program examines ways employers can assist employees, from flexible schedule and benefit plans to on-site day care. Fee: \$79. Information: 641-8151. Sponsor: Troy Chamber of Commerce.
- **ACCOUNTING ASSISTANT**
Tuesday, June 13 — Examination to waive introductory accounting courses in the paraprofessional accountant program begins at 6:30 p.m. in Rochester. Fee: \$10 per examination. Information: 370-3120. Sponsor: Oakland University division of continuing education.
- **WOMEN IN SALES**
Tuesday, June 13 — "The Strength of Weak Ties: The Socialization of Women" is topic for meeting of Professional Women in Sales in Bloomfield Hills. Non-member fee: \$20. Information: 475-2253.

- **ACCOUNTING ASSISTANTS**
Tuesday, June 13 — Waiver examinations for Oakland University's paraprofessional accountant program offered at 6:30 p.m. in Rochester. Fee: \$10 per examination. Information: 370-3120. Sponsor: Oakland University division of continuing education.
- **TIME MANAGEMENT**
Tuesday, June 13 — "Time Management and Organization" offered 9 a.m. to 4 p.m. at the American Society of Employers Conference Center, 23815 Northwestern Highway, Southfield. Non-member fee: \$205. Information: 353-4500. Sponsor: American Society of Employers.
- **VENTURE CLUB**
Tuesday, June 13 — "Your Business Image: How to Sell Yourself and Your Idea" presented at 8 a.m. at the meeting of Southeastern Michigan Venture Group at Walsh College, 3838 Livernois, Troy. Fee: \$25. Information: 689-9322 Ext. 260.
- **LOTUS 1-2-3**
Tuesdays and Thursdays, June 13-22 — "Lotus 1-2-3 Intermediate on the IBM PC" offered 7-9 p.m. in Bloomfield Hills. Fee: \$75. Information: 645-3635. Sponsor: Cranbrook Educational Community.
- **STRESS MANAGEMENT**
Wednesday, June 14 — "Stress Management" offered 9 a.m. to 4 p.m. at the American Society of Em-

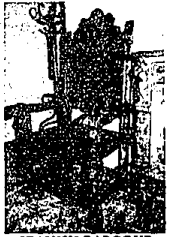
- ployers Conference Center, 23815 Northwestern Highway, Southfield. Non-member fee: \$205. Information: 353-4500. Sponsor: American Society of Employers.
- **PLASTIC TUBING SEMINAR**
Wednesday, June 14 — Free seminar on use of TYGON flexible plastic tubing offered 6:30-8 p.m. at the Radisson Plaza Hotel in Southfield. Information: 356-4000. Sponsor: AIN Plastics.
- **DESKTOP PUBLISHING**
Wednesday-Thursday, June 14-15 — "Introduction to Desktop Publishing" offered 9 a.m. to 4 p.m. at the American Society of Employers Conference Center, 23815 Northwestern Highway, Southfield. Non-member fee: \$110. Information: 353-4500. Sponsor: American Society of Employers.
- **CPA CONFERENCE**
Thursday, June 15 — "Accounting for the Tax Practitioner" conference offered 8 a.m. to 5 p.m. in Bloomfield Hills. Fee: \$90. Information: Michigan Association of Certified Public Accountants, 855-2298.
- **SUCCESS SYNDROME**
Thursday, June 15 — Steven Berglas, author of *The Success Syndrome: Hitting Bottom When You Reach The Top*, will give a free speech 8:30-10:30 a.m. in Dearborn. Reservations and information: Ronald D. Baker, 737-0930. Sponsor: Marketing Communications Counsel Inc.
- **FINANCIAL PLANNING**
Thursday, June 15 — Personal financial planning seminar offered in Southfield. Non-member fee: \$5. Information: 945-5088. Sponsor: Women's Economic Club.
- **PROBLEM SOLVING**
Thursday, June 15 — "Problem Solving Skills for Team Effectiveness" offered 9 a.m. to 4 p.m. at the American Society of Employers Conference Center, 23815 Northwestern Highway, Southfield. Non-member fee: \$205. Information: 353-4500. Sponsor: American Society of Employers.
- **RETIREMENT PLANNING**
Thursday, June 15 — "Retirement Planning After Tax Reform" begins at 7 p.m. at the Rochester Community House, 816 Ludlow, Rochester. Free. Information: Emily Ferry, 652-3200. Sponsor: FaineWebber Inc.
- **GIVEN SEMINAR**
Thursday-Saturday, June 15-17 — Free seminar on the Charles J. Given Organization offered at W.K.R. Marketing Corp., 28690 Southfield Road, Southfield. Information: 438-2877.
- **MINORITY WOMEN'S NETWORK**
Friday, June 16 — Minority Women's Network holds its annual Man of the Year Awards/Scholarship Dinner-Dance at the Southfield Hilton. Fee: \$30. Information: M. Faye Mance, 896-6200 or 896-3602.

DuMouchelles

JUNE 1989 ESTATE AUCTION

FRIDAY, June 23, 1989 7:00 p.m.
SATURDAY, June 24, 1989 11:00 a.m.
SUNDAY, June 25, 1989 12:00 noon

Featuring the extensive art glass collection of a Fort Wayne, Indiana family. Exhibition begins Monday, June 19, 1989, 9:30 a.m.-5:30 p.m. and continues daily through Friday, June 23, 1989, until 12:00 noon. Special preview Tuesday and Wednesday, June 20 & 21, 9:30 a.m. to 8:30 p.m.
Illustrated catalogs available at the gallery for \$8.00, postpaid \$10.00, express mail and overseas \$21.00. Annual subscriptions \$50.00. Call or write for a free illustrated brochure.



SPANISH BAROQUE REVIVAL HAND-CARVED WALNUT DINING SET, EIGHT PIECES CIRCA 1900

- FEATURING:**
- AN EXTENSIVE COLLECTION OF MODERN ART GLASS AND ENAMEL DECORATED GLASS
 - AN EXTENSIVE COLLECTION OF ANTIQUE AMERICAN GLASS
 - A COLLECTION OF MUSIC BOXES
 - A COLLECTION OF GEORGIAN AND EARLY AMERICAN SILVER
 - KPM PORCELAIN PLAQUES
 - FINE POT PAINTINGS
 - FINE JEWELRY INCLUDING A 2.2 CT. DIAMOND, A 14KT MESH EVENING BAG MADE BY TIFFANY & CO. FOR LUCKIE TIFFANY, A 14 KAUROUS JEWELRY, KISS AND MORE
 - FINE BRONZES AND MARBLE SCULPTURE
 - FINE ENGLISH, FRENCH, AND VICTORIAN FURNITURE
 - A GROUPING OF TIFFANY SILVER

NOW ACCEPTING CONSIGNMENTS FOR UPCOMING AUCTIONS



KPM PORCELAIN PLAQUES, PAIR, SIGNED F. WAGNER, WIEN, IN BRONZE AND AUSTRIAN PORCELAIN AND ENAMEL FRAMES, PLAQUES 17" x 19"

Over 1400 fine offerings
FREE VALET PARKING ALL AUCTION DATES

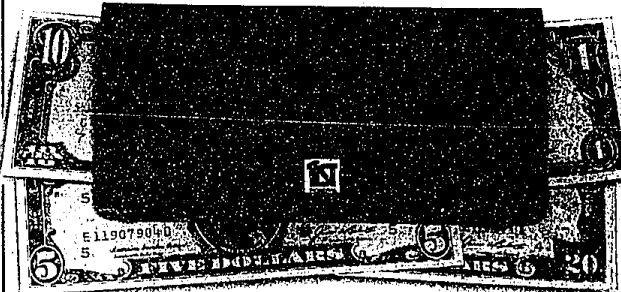
DuMouchelles

409 E. Jefferson, Detroit, Michigan 48226
(313) 963-6255 or 963-6256 (Across from the Ren Cen)
Fine Arts Appraisers and Auctioneers since 1927

Summer Study
MSU
Credit Courses
Close to You!

Select from more than 80 undergrad and grad courses in Birmingham and Farmington Hills. Registration open June 12-16 at the Michigan State University-Birmingham offices, Groves High School, 8 a.m.-6:30 p.m. Call 645-5410.

We Want To Put Some Money Into Your Checking Account.



When you open a checking account at First Federal of Michigan, we'll show you something you may not be getting from your bank.

Interest.
4 3/4% annual interest* paid and compounded monthly.

No charge per check. And your first 50 checks are free.

And if you maintain a \$300 minimum balance, there's no monthly service charge.

Open an account now and we'll even pay you for your old checks, five cents per unused check, up to 200.

Also, you can use your First Federal Prestige® Card to access your account through the Magic Line® (ML) and Plus System® 24-hour ATM networks. And enjoy expanded Saturday drive-up service at many offices.

For more information, call toll free, 1-800-342-5336. It pays to think First.

*Interest rates subject to change without notice.

Think  About Checking.
FIRST FEDERAL OF MICHIGAN

PLAYOFFS
Sale!

CREATE YOUR OWN HOME THEATER AND JUST ENJOY YOURSELF... PLUS... SAVE LIKE NEVER BEFORE!

MITSUBISHI SALE!



50" STEREO MONITOR/RECEIVER

- Contemporary Styling, Oak Finish
- Remote Control
- 181-channel Cable-Compatible
- Stereo TV Reception
- Model VS-582RS

\$2899⁰⁰

20" MONITOR/RECEIVER
with REMOTE CONTROL

- Stylish Pecan Finish
- On Screen A/V Functions
- Black-Matrix Picture Tube
- Model CS-2046R

\$329⁰⁰

26" STEREO MONITOR/RECEIVER
with REMOTE CONTROL

- Genuine Oak Veneer
- Illuminated Remote Control
- Stereo TV Reception
- Model CS-2556R

\$599⁰⁰

60" STEREO MONITOR/RECEIVER
with REMOTE CONTROL

- Hinged Concealable Doors
- Stereo TV Reception
- Model VS-685R

\$4299⁰⁰

AUDIO VIDEO ALTERNATIVES
ROYAL OAK
4526 N. Woodward Ave.
2 Blocks South of 14 Mile Rd.
549-3100
MON., THURS., FRI. 10-9
TUES., WED., SAT. 10-6
FEATURING QUALITY AUDIO & VIDEO PRODUCTS SINCE 1971