

## exhibitions

### SWIDLER GALLERY

Friday, June 16 — "3 Approaches to Clay" features the work of Elaine Ak, Nanette Meeker and Judy Motkin. Reception is 6-10 p.m. Friday. Continues through July 15. Hours are 10 a.m. to 6 p.m. Tuesday-Thursday, until 9 p.m. Friday and until 5 p.m. Saturday, 308 W. Fourth Street, Washington Square Plaza, Royal Oak.

### XOCHIPILI GALLERY

Saturday, June 17 — Paintings and sculpture by Dewey Blackman, physicist turned artist, whose fanciful work has a charming narrative quality. He also writes books for children. Reception for the artist 2-5 p.m. Saturday. Continues through July 15. Hours are 11 a.m. to 5 p.m. Tuesday-Saturday, 568 N. Woodward, Birmingham.

### CONGREGATIONAL CHURCH

Saturday, June 17 — "Celebrate Life," is the ninth annual, juried show hosted by the church. It attracted a very large group of entries. Reception for the artists is 4-6 p.m. Sunday. Continues through June 25. Hours are 11 a.m. to 4 p.m. daily and noon to 4 p.m. Sunday, 1000 Cranbrook at Woodward, Bloomfield Hills.

### HABATAT GALLERIES

Saturday, June 17 — Works by five major glass artists are on display through July 8 — Ricky Bernstein, Etienne Lepelletier, Antoine Lepelletier, Leslie Hawk and Jack Schmidt. The promises to be a show of contrasts and excitement. Opening reception 8 p.m. Saturday, 32255 Northwestern, Farmington Hills.

### DETROIT INSTITUTE OF ARTS

Sunday, June 18 — "Telling Stories/Compelling Events" pairs two artists who combine words and images to create powerful visual statements — Lynne Avadenka and Kathy Constantines. This show which continues through Aug. 29 is the seventh of the Ongoing Michigan Artists Program (OMAP). Reception 2-3 p.m. Sunday. Hours are 9:30 a.m. to 5:30 p.m. Tuesday-Sunday, 5200 Woodward, Detroit.

### COUNTY GALLERIA

Monday, June 19 — Paintings by Boris Ramirez, Ruben Calvo and Harry Schuster and caricatures of people by Elsa Morales are on display through July 17. This exhibit is a cultural exchange between Michigan and Venezuela. The visiting art was shown first at the Saginaw Art Museum and will continue in other areas of the state. The Michigan artists represented in the exhibit in South America are Boris Cohen, Rosa Mendoza, Jose Narezo and Mei Rota. The Galleria is open during regular business hours. Executive Office Building, 1200 N. Telegraph, Pontiac.

### SOMERSET MALL

Thursday, June 22 — Third annual art exhibit by members of the G.M. Design Staff will continue through June 25. There are 30 artists in the mixed media show, quite a few are well known as regional artists. Artists — duck carvers, photographers, sculptors, ceramicists and painters — will be in attendance during the exhibit. All work will be for sale. Open during regular mall hours, Big Beaver at Coolidge, Troy.

### G. R. N'NAMDI GALLERIES

Sculpture by Kathryn Field, paintings by Peter Pinchbeck and metal collage by Al Hinton are on display

through July 15, 181 Townsend, Birmingham. "Objects and Images," works by Nanette Carter, Ed Clark, Richard Hunt, Artis Lane, Al Loving, Howardena Pindell and Betye Saar, is at the Gallery's location in the David Whitney Building, 1553 Woodward, Detroit through July 8. Hours are 11 a.m. to 5:30 p.m. Tuesday-Saturday.

### PARK WEST GALLERY

Harold Altman's entire collection of 42 color etchings is on display in three of the 12 galleries. There's lots to see in this huge place. Hours are 10 a.m. to 6 p.m. Monday-Wednesday, until 9 p.m. Thursday and Friday and 11 a.m. to 6 p.m. Sunday, 29469 Northwestern, Southfield.

### U-M MUSEUM OF ART

43rd water exhibit sponsored by the Michigan Water Color Society continues through Aug. 6. There are 85 paintings by 74 artists throughout the state. Reception and awards presentation is 6-8 p.m. Saturday, June 24. Open to the public. Hours are 11 a.m. to 4 p.m. Tuesday-Friday and 1-5 p.m. Saturday and Sunday, 525 S. State, Ann Arbor.

### FOUR WINDS GALLERY

"Tradition and Innovation," the contemporary designs of San Juan Pueblo jeweler Mike Bird and New Mexico folk art by Allison Bird. Continues through July 7. Hours are 10 a.m. to 5:30 p.m. Monday-Saturday, until 8 p.m. Thursday, 340 E. Maple, Birmingham.

### ARIANA GALLERY

"A Flock of Furniture" is an exhibition of contemporary furnishings by 10 artists whose creative imaginative forms add lots of color for fun and drama. Continues through June. Hours are 10 a.m. to 5 p.m. Monday-Saturday, 386 E. Maple, Birmingham.

### HOMESTEAD GALLERY

"Directions 1989" featuring the

Sculptors Guild of Michigan continues through June 25. Hours are 11 a.m. to 5 p.m. Tuesday-Sunday, until 9 p.m. Thursday, 136 S. Pontiac Trail, Walled Lake.

### ROBERT KIDD GALLERY

New sculpture by Jay Lefkowitz and recent paintings by Moe Brooker are on display through July 8. Hours are 10:30 a.m. to 5:30 p.m. Tuesday-Saturday, 107 Townsend, Birmingham.

### FEIGENSON/PRESTON GALLERY

Selected work by gallery artists continues through July 1. Hours are 11 a.m. to 5 p.m. Tuesday-Saturday, 795 N. Woodward, Birmingham.

### PAINT CREEK CENTER

"Photomages '89" continues through July 7. Carl Roth, head of photography at Cranbrook Academy of Art, juried the exhibition.

## Small's packages

Continued from Page 2

well as winner of the Parents' Choice Award for Literature from the Parents' Choice Foundation. Imogene wakes up one morning to find that she has grown antlers! (If one looks closely on Imogene's bed, one can see Eulalia.)

The reactions of her family range from her mother fainting to attempts to reach the child who feels different from other children, but who still has something special to offer. He appeals to the universal characteristic of feeling like an outsider but still wanting to be understood.

The drawings and story are both more mature in "Paper John" (1987). Paper John is a friendly loner who comes to town and makes glorious things out of paper to the amusement of the children but to the dismay of the devil.

"Paper John" is in the tradition of a Brothers Grimm folktale, and, as a result, is more removed from the feelings of what it is like to be a child. While the plot may have more to it than in his first two works, the emotional content of "Paper John" is flatter.

DAVID SMALL has illustrated a number of books as well, including "Mean Chickens and Wild Cucumbers" (1983); "Gulliver's Travels" (1983); "The Kikapaleto Players Present: The Dragon Who Lived Downstairs" (1984).



designing ways

Eve Garvin

## Matching fabrics add finishing touch

From a reader: We have just completed our summer-winter vacation home up north. We love to ski so we want our getaway home to look right no matter the season. We have a cathedral ceiling that has exposed beams. Our fireplace is reclaimed brick. The room size is 18-by-30. We want as much seating as possible. We like the country look.

A. I suggest you find a wallpaper that has a matching fabric. Paper between the beams. Repeat the fabric wherever you can — windows, throw pillows, chair pads. Your room is large enough to use three sofas. A games table and chairs will give additional seating.

In selecting a games table, consider a flip-top so that you may be able to seat eight rather than four.

**NOLING**  
REAL ESTATE, INC.  
201 S. Lafayette  
437-2056  
522-5150

PASSIVE SOLAR RANCH — 3 bedroom home only 4 years old and meticulously maintained and landscaped. Country sub only 5 minutes to I-65. 2 baths, great room with fireplace, deck, 2 car garage. Attached 2 car garage, deck. \$115,000.

BRICK RANCH ON 4 SECLUDED ACRES — 3 bedroom home, family room with fireplace, 26 beams, attached garage. Heavy finished without basement with 2nd fireplace. Loss of trees. \$173,500.

SECLUDED RANCH ON 5 ACRES — Large 2 bedroom home hidden from road by trees, family room with fireplace, long room, full room (could be 2nd bedroom), 1 1/2 baths, 1st floor laundry, attached garage. Finished basement with wet bar. Pole barn, pool. \$163,000.

SPLIT LEVEL IN COUNTRY SUB — 3 bedroom home overviews pond, 2nd construction, Andersen windows. Open floor plan, family room, attached garage. Only 4 years old. \$117,000.

ALL SPORTS LAKE WATERFRONT RANCH — 2 bedroom bungalow, has home with 50' sandy beach, seawall. Central air, new vinyl windows, deck, patio, attached garage. 2nd lot across street gives access to Huron River and Brighton school. \$99,900.



**Merrill Lynch Realty**

## CONSIDERING REAL ESTATE AS A CAREER?

JOIN US FOR OUR WEEKLY OPEN HOUSE CAREER NIGHT AT OUR NOVI/NORTHVILLE OFFICE.  
Every Thursday 7 PM - 9 PM 37000 Grand River Road at Halstead, Suite 120 478-5000 • Dave Jensen, Manager



A California lifestyle can be yours! This exciting FARMINGTON HILLS contemporary features a hot tub, decks overlooking gorgeous lot, gazebo, great room with stone fireplace and bleached wood floor, circular driveway, 3 bedrooms and 2 1/2 baths. Don't miss it! \$279,000 851-8100 08-B-2800



Super sharp FARMINGTON HILLS home has a family room with full brick wall and fireplace, doorways from kitchen and family room lead to multi-level deck that overlooks pond and commons. 4 bedrooms, 2 1/2 baths, dining room, family room, basement. \$165,750 851-8100 06-B-2851



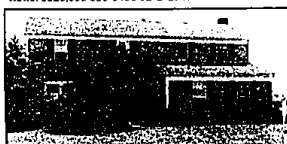
FABULOUS new construction ready for immediate occupancy. This LIVONIA ranch is highlighted by a brick courtyard entrance, wood insulated windows, ceramic tile in foyer and 2 1/2 baths, oak cabinetry, stained woodwork, master bedroom with bath, situated on a large country lot. \$154,900 478-5000 07-B-2849



Nearly perfect! This very special "cottage" offers an outstanding condo alternative. This FARMINGTON HILLS 3 bedroom, 1 1/2 bath home is a first buyer's dream or an empty nester's ideal selection. Offering a great room, rec room, newer roof, furnace and central air — So Exceptional! \$114,900 626-9100 02-A-2845



Vintage choice WEST BLOOMFIELD lakefront home reflects a beautiful farm country setting. Featuring 2 large bedrooms, 2 baths, airy rooms including an exquisite Florida room, living room with fireplace, spacious kitchen, and a nice finished room over garage. Wonderful view! \$225,000 626-9100 02-B-2717



Ideal for family living, this well-maintained FARMINGTON HILLS Colonial backs to commons area. Featuring 4 bedrooms, 2 1/2 baths, large dressing area in master suite with walk-in closet, cozy family room with fireplace and finished basement. \$161,900 626-9100 02-B-2864



LOCATION, LOCATION! This exceptional WEST BLOOMFIELD Townhouse is better than new! Featuring 3 bedrooms, 2 1/2 baths, living room with fireplace, hardwood floors in kitchen, 6 panel doors to deck overlooking woods, many upgrades, you'll love it! \$147,500 646-0000 01-A-2808



Private and serene best describes this charming home on a gorgeous treed lot in WEST BLOOMFIELD. Set deep in the sub, plus Birmingham Schools. Simple assimilation, newer roof, and updated kitchen. 3 bedrooms, 1 1/2 baths, family room heater. \$109,900 851-8100 05-B-2401



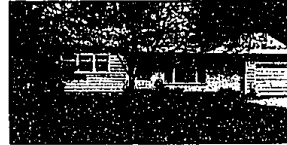
Spacious Quad-level FARMINGTON HILLS home is nestled on a beautiful 1 acre lot with tranquil pond views. Recently remodeled gourmet kitchen, family room with walk-out to terrace, fabulous garden room with heated slate floor, fireplace, living room, 4 bedrooms, 2 1/2 baths. \$182,900 626-9100 02-B-2892



Exceptional 4 bedroom Quad-level Tudor situated on 2 picturesque lots. Loaded with extras, this home boasts nice kitchen and appliances, living room, dining room and family room, a bay window, central air, patio and porch add to the appeal of this home. \$159,900 478-5000 07-B-2716



SHARP contemporary condo located in FARMINGTON HILLS offers 2 bedrooms, great room with fireplace, neutral decor, snack bar in spotless kitchen, large separate storage area upstairs and central air make this home a true delight. \$128,900 626-9100 02-A-2844



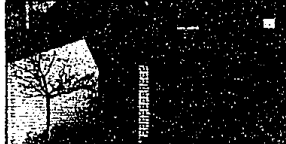
Exceptional SOUTHFIELD ranch offers many extras for the first time buyer. A spacious kitchen overlooks a unique great room with cedar shake cathedral ceiling. A doorwall opens to a deck with wooded view. This 3 bedroom home has plenty of storage and many amenities! \$82,900 626-9100 02-B-2578



This home has superb fringes! These include 2 bay windows with excellent views, spacious kitchen with view of tremendous fireplace with raised hearth, library, good size first floor laundry, oversized garage and so much more! 4 bedrooms, 2 1/2 baths, dining room, central air, family room. \$166,900 626-9100 02-B-2707



AN IMPOSSIBLE FIND! Three bedrooms and 3 bath condo just steps away from downtown FARMINGTON. A wonderful wooded backdrop makes this townhouse a real winner. Extras include a full basement, brick courtyard, and decking. \$159,900 626-9100 02-B-2841



This WEST BLOOMFIELD home is an absolute steal! Two bedrooms, 2 1/2 baths, 2 fireplaces, gated entry with deck and 2nd deck off living room overlooking stream. Plus a large professionally finished walk-out lower level. \$122,900 651-8100 05-B-2628



VERY APPEALING ranch with wonderful views overlooking golf course. This home features a remodeled kitchen with loads of cupboards and snack bar, finished upstairs as 3rd bedroom with cedar closet, Florida room, first floor laundry and 1 car detached garage. \$53,900 626-9100 02-B-2828



**Merrill Lynch Realty**

BIRMINGHAM/BLOOMFIELD

1520 N. Woodward  
(at Long Lake)

646-6000

FRANKLIN/FARMINGTON

31000 Northwestern Hwy  
(at 13 mile)

626-9100

TROY

3150 Livernois  
(at Big Beaver)

689-8900

ROCHESTER

1460 Walton Blvd  
(at Livernois)

651-8850

WEST BLOOMFIELD

4316 Orchard Lake  
(at Long Pine)

851-8100

NOVI/NORTHVILLE

37000 Grand River  
(at Halstead)

478-5000



OPEN MONDAY-FRIDAY 9 a.m.-9 p.m. SATURDAY 9 a.m.-9 p.m. OPEN SUNDAYS