

exhibitions

KRASL ART CENTER MUSEUM

Thursday, July 6 — "Six Directions," featuring works by local artists Barbara Keldan, Margaret Keldan, Sonia Molnar, Rita Skoczen and Frances Waring. They will be speaking informally at the opening 7:30 p.m. Thursday, July 6. Continues through July. This is the ninth exhibit for this group of artists, whose works are shown statewide. Krasl Art Center Museum is in St. Joseph.

FEIGENSON/PRESTON GALLERY

Friday, July 7 — Photographs from Guam and Paris by Manny Cristoforo are on display through Aug. 5. Reception for the artist 4-7 p.m. Friday, July 7. He is from Guam, has a degree in photography from University of Missouri, has published two books and won many awards, including the Pulitzer Prize. This is his first solo exhibit. Hours are 11 a.m. to 5 p.m. Tuesday-Saturday, 706 N. Woodward, Birmingham.

CITY ARTS GALLERY

Friday, July 7 "Looking Glass: The Stained Glass Art of Claudia Stier." Opening reception is 5:30-8 p.m. Friday, July 7. This is the former Front Room Gallery of Detroit Council for the Arts. Hours are 9 a.m. to 5 p.m. Monday-Friday, 47 East Adams on Grand Circus Park, Detroit.

HOMESTEAD GALLERY

Saturday, July 8 — "In Love with Love," contemporary watercolors by Jo Rosen of West Bloomfield. Her refreshing sense of humor shows in her works, which are frequently subtle commentaries on today's suburban lifestyle. Opening reception 8 p.m. Saturday. Hours are 11 a.m. to

5 p.m. Tuesday-Sunday, until 9 p.m. Thursday, 136 S. Pontiac Trail, Walked Lake.

DONALD MORRIS GALLERY

Saturday, July 8 — "American Modernist Drawings and Watercolors" continues through Aug. 19. This collection covers the excitement that occurred in the American art scene during the first three decades of the 20th century. There are 40 works by 20 important artists. Opening is 2-6 p.m. Saturday, July 8. Hours are 10:30 a.m. to 5:30 p.m. Tuesday-Saturday, 105 Townsend, Birmingham.

MICHIGAN GALLERY

Saturday, July 8 — "Auto Exposures" is the first half of an exchange exhibition with a New York alternative space gallery. There are 35 New York artists represented in this show of works related to current urban issues. Opening reception 7-10 p.m. Saturday, July 8. Hours are 11 a.m. to 5 p.m. Tuesday-Saturday, until 8 p.m. Friday, 2661 Michigan, Detroit.

DONNA JACOBS GALLERY

"Cult Objects of Clay" continues through Aug. 6. These are mystical figures, chariots and beasts from the Syro-Hittites. Hours are 11 a.m. to 5:30 p.m. Tuesday-Saturday, 574 N. Woodward, Birmingham.

DETROIT FOCUS

"From Artists Studios/Current Work" combines wood sculpture by Lincoln Edly and works in metal by Robert Bielak. The artists were chosen from a large group of competitors and will share a \$2,000 award from Arts Foundation of Michigan. Reception is 7:30 p.m. Friday, July 7. Hours are noon to 6 p.m. Wednesday-Saturday. Closed July 14, 743 Beaubien, Detroit.

COUNTY GALLERIA

Exhibit of photographs of the children of Chengdu, China, by Marian Heller and photos by some of the best photographers from Sichuan Province continues through July 10 as a part of the Oakland County Cultural Council's salute to Asian and Asian-American art during this summer. Open during regular business hours. Executive Office Building, 1200 N. Telegraph, Pontiac.

ALICE SIMSAR GALLERY

"Woodcuts and New Editions: 1928-1983" continues through August. "Famelleore Baron: Collage" is being shown in conjunction with an exhibit of her work at the Guggenheim Museum of New York. Hours are 10 a.m. to 5:30 p.m. Tuesday-Saturday, 301 N. Main, Ann Arbor.

THE COMMUNITY CENTER

Traditional oil paintings by Joyce King are on display through July. The Center is open 9 a.m. to 7 p.m. Monday-Thursday and until 5 p.m. Friday. She will give an oil painting workshop 10 a.m. to 2 p.m. Saturday, July 15. Her paintings are primarily landscapes although she specializes in portraits. 24705 Farmington Road, just north of 10 Mile, Farmington.

DOS MANOS

Molas, originally hand sewn as a part of a blouse by the Cuna Indian women of Panama's San Blas Islands, are on display through July. While they are considered a primitive art form, they are often complicated in design and execution. Hours are 11 a.m. to 6 p.m. Monday-Friday, until 8 p.m. Wednesday and 5 p.m. Saturday, 210 W. Sixth, Royal Oak.

ROCHESTER HILLS CITY HALL

Paintings and pastels by Althea Bosworth are on display through August. The exhibit is part of Paint Creek Center for the Arts' Art in

Public Places program. Open 8 a.m. to 5 p.m. Monday-Friday, 1000 Rochester Hills Drive, off Aven Road, Rochester Hills.

GALLERY 22

Group show by 40 gallery regulars continues through July. Includes Impressionist and abstract paintings and prints. Hours are 9:30 a.m. to 6 p.m. Monday-Friday, until 9 p.m. Thursday and until 5 p.m. Saturday, 22 E. Long Lake, Bloomfield Hills.

TROY PUBLIC LIBRARY

10 watercolors by Jose Romero are on display through July. Open during regular hours, Troy Civic Center, West Big Beaver, Troy.

CASS CORRIDOR COMMUNITY CENTER

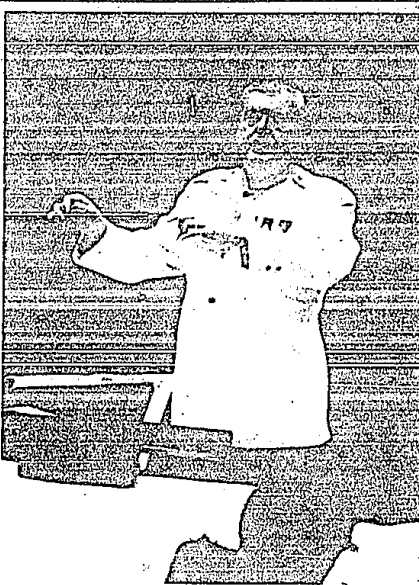
Opening of this Center, founded by Women's Own, is accompanied by an exhibit of paintings by Nora Chapa Mendonca and sculptures by Diana Kamuleki through July 23, 223 E. Canfield, Detroit.

LAWRENCE STREET GALLERY

Watercolors in handmade frames and wood sculptures by Matthew John Schellenberg are on display through July 22 along with work by other gallery members. Opening is 5-9 p.m. Friday, July 7. Hours are 11 a.m. to 4 p.m. Tuesday-Saturday, 29 W. Lawrence, Pontiac.

G.R. N'AMDI GALLERIES

Sculpture by Kathryn Field, paintings by Peter Plinchbeck and metal collage by Al Hinton are on display through July 15, 101 Townsend, Birmingham. "Objects and Images" works by Nanette Carter, Ed Clark, Richard Hunt, Aris Lantz, Al Lovins, Howardena Pindell and Betye Saar, is at the Gallery's location in the David Whitney Building, 1553 Woodward, Detroit through July 8. Hours are 11 a.m. to 5:30 p.m. Tuesday-Saturday.



Concertmaster

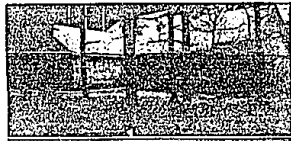
The famous oompapa sounds of the Detroit Concert Band will fill the Livonia City Hall Plaza at 3 p.m. Sunday when Dr. Leonard Smith and his musical entourage perform under auspices of the Livonia Arts Commission and the Ford Motor Co. The concert is free, but spectators are reminded to bring chairs. In the event of rain, the concert will be held in Churchill High School auditorium, Newburgh and Joy roads.

Merrill Lynch Realty

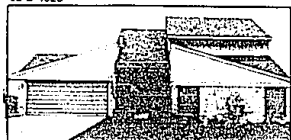
CONSIDERING REAL ESTATE AS A CAREER?

JOIN US FOR OUR WEEKLY OPEN HOUSE CAREER NIGHT AT OUR NOVI/NORTHVILLE OFFICE.

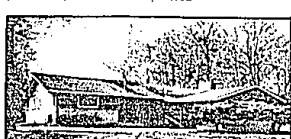
Every Thursday 7 PM - 9 PM 37000 Grand River Road at Halstead, Suite 120 478-5000 • Dave Jensen, Manager



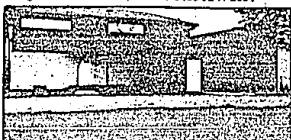
Stunning contemporary homes in one of Commerce's finest subdivisions. Complementing these fine homes are large airy bedrooms, a spectacular great room with fireplace, new appliances and lake privileges too! All situated in a scenic wooded area. Immediate Occupancy. Prices starting from \$209,000. \$259,000 626-9100 02-B-1828



SUPER FAMILY SUB! Featuring an open contemporary design with a dramatic 2-story foyer, oak and laminate kitchen, 3 large bedrooms, 2 1/2 baths, first floor laundry and a dock with a super view of commons area and pond. \$184,900 626-9100 02-A-2682



Looking for a gorgeous California contemporary? An open free-flowing floor plan, doorways that lead to atrium and patio terraces bring the towering trees to a natural indoor setting, beamed family room and new solarium kitchen floor make this home truly breathless. Birmingham schools. \$137,900 626-9100 02-A-2681



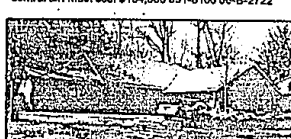
DELIGHTFUL 2 story FARMINGTON HILLS home features 3 bedrooms, 1 1/2 baths, new carpeting throughout, freshly painted, neutral decor, formal dining room and patio. Located on a very private street. Call for more details! \$99,500 478-5000 07-B-2025



EXCELLENT LOCATION! This stunning end unit condo is located in the newest phase of Pebble Park Circle. Contemporary floor is evident throughout this 2 bedroom, 2 bath home. Featuring a dramatic great room with fireplace, entrance with lovely courtyard, dining room, central air and much more! \$248,000 651-8100 06-A-2710



FARMINGTON HILLS family home backing to commons. Featuring a large master suite plus 3 good size bedrooms, 2 1/2 baths, finished rec room, wet bar, family room with fireplace, professionally landscaped yard and central air. Must see! \$184,500 651-8100 06-B-2722



This home has exceptional potential! Already packed with spacious rooms and many extras. Four bedrooms, 2 1/2 baths, family room with fireplace, hardwood floors, central air and Birmingham schools. Don't miss this opportunity! \$132,900 626-9100 02-A-2601



WONDERFUL Family neighborhood. Convenient to schools and main arteries, this spacious 4 bedroom, 1 1/2 bath Colonial features a power furnace, roof and water heater. Extras include central air, breakfast nook, patio and porch. \$79,900 626-9100 02-A-2779



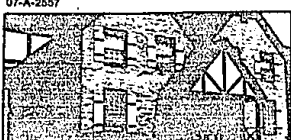
Historic Franklin is the location for this charming cape cod on a beautiful tree lot. Spectacular fieldstone wall in kitchen and living area. New roof in '89. Redecorated in '88 with new carpeting. Very prestigious area of expensive homes. 4 bedrooms, 2 1/2 baths, family room, library, trees. \$234,500 626-9100 02-D-2399



FARMINGTON HILLS Colonial with natural stone front boasts 4 spacious bedrooms, 2 1/2 baths, breakfast nook with sitting area and fireplace, large family room with ample space, dining room and expansive decking off master bedroom. Great Buy in Meadowbrook Hills. \$184,500 478-5000 07-B-2945



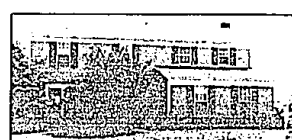
Well maintained home in SOUTHFIELD has all the extras for those looking for "the works." This 4 bedroom, 2 1/2 bath ranch offers a spacious den, dining room, breakfast nook and woodburning fireplace. Some appliances included, plus many amenities! \$109,900 478-5000 07-A-2657



OWNER ANXIOUS TO SELL! Dramatic price reduction. Gas 2 bedrooms for the price of two with this contemporary condo in Southfield. Featuring a ceramic tile foyer, custom mirrors, built-ins, work area in basement, walk-in closet in master bedroom. \$69,900 626-9100



Attractive 4 bedroom, 2 1/2 bath FARMINGTON HILLS custom ranch offers a great location on a large lot, new carpeting in family room with natural fireplace, wet bar, dining room, breakfast nook and slate foyer. \$199,600 626-9100 02-B-2887



Ideal for family living, this well maintained FARMINGTON HILLS Colonial backs to commons area. Featuring 4 bedrooms, 2 1/2 baths, large dressing area in master suite with walk-in closet, cozy family room with fireplace and finished basement. \$161,900 626-9100 02-B-2854



Executive townhouse condo with private entrance and parking surroundings. With over 2200 sq. ft. of comfortable living space. This condo is freshly painted in neutral shades, 3 bedrooms, 2 1/2 baths, doorwall from den and kitchen to patio, central air, full basement. Pool and clubhouse. \$163,800 626-9100 02-B-2372



FARMINGTON HILLS multi-level offers a convenient location close to expressways and shopping. Featuring 2 bedrooms, 2 baths, cozy lower level, comfortable floor plan enhances living room, dining room and kitchen. Pool, tennis courts and carport. \$69,900 626-9100

Merrill Lynch Realty

BIRMINGHAM/BLOOMFIELD

TELEPHONE 646-6000

FRANKLIN/FARMINGTON

TELEPHONE 626-9100

TROY

TELEPHONE 689-8900

ROCHESTER

TELEPHONE 654-8850

WEST BLOOMFIELD

TELEPHONE 851-8100

NOVI/NORTHVILLE

TELEPHONE 478-5000

OR

OPEN MONDAY-FRIDAY 9 AM-5 PM SATURDAY 9 AM-1 PM SUNDAY 12 PM-5 PM