



Louis XV bombe commode has a marble top over three drawers. It is mahogany with fruitwood veneers.

## Art going up for auction

Continued from Page 1

desk, or the Louis XVI-style chaise with the unusual kidney-shaped cushion from Mrs. Couzens's bedroom, will be in their original home again."

Mrs. Couzens treasured a few "collectables" on her vanity table. Those in the sale include a 19th century Boucheron seal with a carved ivory bust of a turbaned maiden wearing gold wire necklaces, a carved ivory triptych, a figure of Mary, her body hinged halfway, that opens to reveal a high relief of the Ascension, and a portrait miniature on ivory, mounted in a diamond-encrusted (five carats) pierced frame.

There is also a collection of miniature portraits painted on ivory, most of them are 18th century French.

Did Couzens have professional assistance when he assembled the collection? Boos doesn't know.

but he always went to the very best galleries, most often in New York or in Washington, when he was a senator. Many of them are still in

business. They could easily have given him any advice he needed."

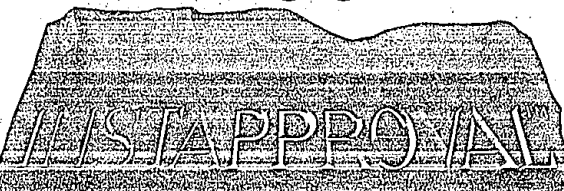
COUZENS ASSEMBLED a collection of graphics while in Washington, or at least it would seem, since most of them came from a Washington dealer. Among artists represented are Rembrandt, Miro, Picasso, and J.A.M. Whistler. One of the more important paintings is Felix Zelm's "Grand Canal, Venice," for which Couzens paid \$8,000 in 1917. Boos estimates that it will bring \$25,000-\$30,000.

Looking at the entire 400-piece collection, the amount and diversity of silver serving pieces and china and glassware, the number of tables and mirrors, you get the impression that neither the Yaws nor the Couzenses could bear to part with anything and you'd be right.

The Boos Gallery is at 420 Enterprise, Bloomfield Hills. Exhibition hours for the collection are noon to 8 p.m. Thursday and 10 a.m. to 2 p.m. Friday. Bidding starts at 7 p.m. Friday, 11 a.m. Saturday and noon Sunday.

Save a life. Learn CPR.

When you qualify for Ross Mortgage's New



your mortgage commitment is instantly carved in stone!



THE ROSS MORTGAGE TEAM

Not just a Mortgage Service

Championship Service

ROSS

MORTGAGE SERVICES

Not just a Mortgage Service

Championship Service

NOVI

PRIME SITES!!!  
at Pro-Grand Opening  
PRICES!!!

TWO NEW SUBDIVISIONS

Heritage Park

Roma Ridge

From \$183,990

From \$171,990

Sales Office  
349-6969

Sales Office  
344-9730



Master Craftsmanship ... Incomparable Value!

- Country-style living
- First floor master bedrooms (per model)
- Gourmet kitchens
- Designer bathrooms
- Cathedral ceilings
- Brick fireplace
- And much, much more!

All Models Open Daily and  
Weekends, 12 p.m. to 6 p.m.  
Broker Participation Welcome  
Main Office: 851-0940

Lifestyle Homes

Models located  
at Dunbar Pines  
Subdivision

1	2	3	4
5	6	7	8
9	10	11	12
13	14	15	16

## STONEBRIDGE

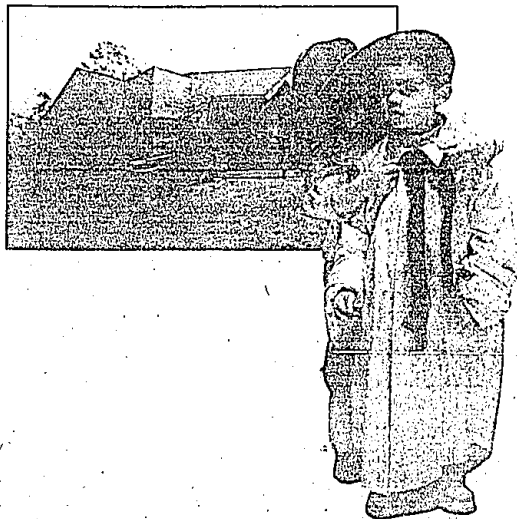
Meet Mr. Seth and Mrs. Lindsey. Two friends sharing a moment that just might be remembered for the rest of their lives.

It's a scene that happens at a family community like Stonebridge, every day. On sidewalks where children play. At get-togethers where neighbors meet and talk. And in West Bloomfield schools where education is still a priority.

Stonebridge is much more than just quality homes. It's large bedrooms and family rooms, luxurious bathrooms, seven different floorplans, stucco ceilings and European kitchens. But most of all living at Stonebridge is the start of something beautiful.

Prices from \$273,000  
Homes available immediately.  
Call for a brochure today.  
Phone 661-6654

Memories start here.  
in West Bloomfield's premier community



Come visit us daily & weekends 12-5 • Closed Thursday  
Located south of Maple Road between Farmington and Drake Roads in West Bloomfield  
Another Nisara/Cohen Associates and Selective Homes Development

Decorated Models by Gorman's Delivery

Broker Cooperation Invited

<p>CANTON - NORTH, NICE ONE OWNER maintenance free brick ranch. Three bedrooms, family room, nice fenced in backyard, sunken foyer. \$110,900 553-8700</p>	<p>FARMINGTON HILLS - Comfortable home with fireplace in both living room and family room. Lots of room for expansion. One of very few properties left with convenient location and country atmosphere where horses are allowed. \$169,000 553-8700</p>	<p>MILFORD - LAKE SHERWOOD FRONTAGE. A well kept secret. Truly one of the most beautiful places on the lake. Walk-out, five bedrooms, 2 full and 2 half baths. \$425,000 553-8700</p>
<p>FARMINGTON HILLS - PERFECT FOR THE YOUNG PROFESSIONAL COUPLE. Just minutes from the X-way, 3 bedroom ranch, 2 car attached garage, 1 bath. Beautiful flood lot. \$89,000 553-8700</p>	<p>FARMINGTON - BEAUTIFUL STARTER HOME in excellent location. Walk to town. Excellent neighborhood. Cozy ranch. Attached garage. Wonderful yard. Won't last! \$66,000 553-8700</p>	<p>FARMINGTON - BEAUTIFUL HISTORIC HOUSE located in downtown Farmington. Large rooms, hardwood floors, 1st floor master bedroom. Magnificent lot provides all the conveniences. Won't last! \$92,000 642-0703</p>
<p>BRIGHTON - LUXURY RESORT-TYPE LIVING. Push contemporary fair home on golf course, plus lake privileges. Soaring windows through. Fantastic 1st floor master built with separate jacuzzi and shower. Wrap-around decking, plus private screened porch. Many deluxe amenities. \$460,000 553-8700</p>	<p>WALLED LAKE - INTERIOR DESIGNER'S CARRIAGE UNIT. Private location. Cathedral ceiling, large master bedroom with walk-in, 2nd bedroom lots of closet space. Attached garage. \$68,000 553-8700</p>	<p>FARMINGTON HILLS - CONTEMPORARY END UNIT RANCH CONDO with 2 bedrooms, 2 baths, private entry, alarm system, private dock, 1 car garage, great location. Call for particulars for Buyer's financing assistance. \$106,000 642-0703</p>

**THOMPSON-BROWN**

FARMINGTON HILLS 553-8700    BIRMINGHAM/BLOOMFIELD 642-0703    LIVONIA 261-5080