

# Council condemns censorship

The Michigan Council for the Arts has announced a "Declaration of Principles" condemning censorship of the arts. This action, prompted by current congressional proposals to curtail the funding and activities of the National Endowment for the Arts, was approved unanimously by the Council at its quarterly meeting.

Leon Colson, Council chairman, said, "The Council is mandated to encourage a freedom of artistic expression essential to the well-being of the arts. We will continue to support artistic freedom at every level of American life."

libraries and our concert halls are filled with works of art which were once condemned as outrageous, blasphemous or immoral, but today are recognized as treasures.

By Law the Michigan Council for the Arts is mandated "to encourage a freedom of artistic expression essential to the well being of the arts." (MSA 3.317(4)). In furtherance of that statutory responsibility, the Council adopts this statement of principles:

- The arts must be free. Censorship of the arts in whatever form, and by whatever means, will be vigorously opposed.
- Political attempts to control the arts offend the American spirit. For this reason, we reject as abhor-

rent current efforts in the United States Congress to set politically mandated artistic standards through the allocation or curtailment of funds to the National Endowment for the Arts.

- The Michigan Council for the Arts has a great obligation and public responsibility in granting public funds to the arts. We fulfill that responsibility with the adoption of and adherence to a rigorous system of peer review and panels composed of art experts to recommend grants on

the basis of artistic merit. Attempts to interfere with that process should be strenuously opposed.

- The arts community must recognize, of course, its own responsibility to maintain the highest standards, to encourage the best in all fields, and to understand the realities of public funding.
- We will do all in our power to make certain the arts flourish in Michigan and that they flourish in an atmosphere of freedom.

## DECLARATION OF PRINCIPLES

The arts are under attack. Such attacks are not new. History is replete with efforts to stifle artistic freedom and to have the arts conform to the notions of a few. Our museums, our

## Vocal tryouts announced

Madrigal Chorale will hold auditions at 5 p.m. Sept. 5-7 at Southfield-Lathrup High school music room, 12 Mile, between Evergreen and Southfield roads.

848-2937, to arrange an audition time.

The 50-voice Madrigal Chorale rehearses Tuesday evening at Southfield-Lathrup High School to prepare for four concerts each year. The season will begin with the eighth annual holiday concert at Old St. Mary's Church in Greetown. Robert A. Martin is the new artistic director.

Those auditioning should be prepared to sing a brief solo and to sight-read music. An accompanist will be available. Call Pat Duensing,

## GRAND OPENING! Oak Pointe CONDOMINIUMS HIGHLANDS



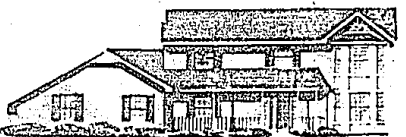
SALES OFFICE MODEL: 4280 ST. ANDREWS

The newly developed Highlands area of Oak Pointe (the former Burroughs Farms) features custom, single family homes by Guenther on 33 beautiful, large, rolling sites. Many of the homes will enjoy the fairways of one of the three superior golf courses carefully carved from Oak Pointe's 700 acres of rolling meadows, woodlands, lakes and streams. It is the best of so many worlds. A peaceful, private retreat and an exciting resort boasting the finest recreational facilities, including a beach club and marina on West Crooked Lake. Guenther homes in Oak Pointe Highlands range from 2000 to 3600 sq. ft. and are priced from \$280,000 to \$400,000. The sales model pictured above is tastefully furnished and decorated for your viewing pleasure. Three other models are under construction for quick occupancy. MODELS OPEN: Sunday 12:00 to 4:00; Monday, Tuesday, & Friday, 10:00 to 5:00; Wednesday 3:00 to 7:00; Saturday 12:00 to 5:00; Closed Thursday



GUENTHER BUILDING CO. PHONE: 313/227-6607

## Good Things Come to Those Who Wait . . . and Now the Wait is Over.



At last it's here—a neighborhood with all the warmth and charm of rolling hills and tall pine trees—Waling Woods. After months of careful planning and design, two beautifully decorated and furnished model homes from Hauser & Baum Custom Home Builders, Inc. are now open and you're invited for a grand tour.

Come stroll through our spacious rooms, take in the timeless beauty and livability of traditional architecture and detailed styling with contemporary comfort that give Waling Woods its distinctive appeal.

Waling Woods is not simply a development of exceptional homes, it's an exceptional small community. When complete, it will include a more than 3 acre park with bike and jogging paths, creating an environment ideally suited for the active family.

At last, the home you've been waiting for has finally arrived—Waling Woods—re-creating a tradition in fine living. Affordably priced from \$139,900.

**WALING WOODS**

Waling Woods is conveniently located in Highland Township on Barry Lake Road, 1/4 miles north of I-50. Model homes are open daily 12-6, Saturday and Sunday 1-5, closed Thursday. Call (313) 897-6101 or (313) 632-7880 for more information.

**Hauser & Baum**  
CUSTOM BUILDERS, INC.  
11526 Highland Rd., \*Harland  
313/632-7880

Custom Built on Your Lot or Ours



**BLOOMFIELD HILLS SCHOOLS**

OUTSTANDING VALUE is seen in this four bedroom contemporary colonial. Executive living room with wet bar. A two story entry with neutral ceramic tile you appreciate the openness of this family home. Extra large 1st floor two-story room, two bathrooms on first floor, beautiful deck, garden room and WALNUT LAKE BOAT and BEACH PRIVILEGES. Priced to sell at \$228,000.

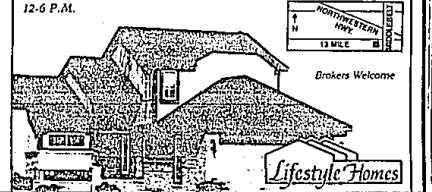
Ask for SUSAN WEINGTOCK 851-6900 855-2977

**RALPH MANUEL ASSOCIATES • REALTORS WEST**

## COVE CREEK

Cove Creek features elegant luxury condominiums in a secluded park-like setting, complete with trees, a natural creek and footbridge. These meticulously constructed condominiums offer an impressive array of appointments in both ranch and two-story floor plans. Better yet, every amenity is included...from the private entrance courtyards to the designer master baths with whirlpools. And every home has an exquisite view. So, move up to a luxurious lifestyle...only at Cove Creek.

Phone 626-6820 JENN-AIR Appliances Included



Brokers Welcome Lifestyle Homes

# NOVI Heritage Park

from \$183,990

Novi's most luxurious new subdivision with wooded sites. Exquisite, executive-style homes.

- 4 bedroom, 2 1/2 bath Traditional with a Contemporary flair • Brick • New 1989 models • Jenn-Air appliances • Unique architectural design

MODELS OPEN Daily & Weekends 12-6 p.m.

Sales Office 349-6969 Main Office 851-8940

Models Located at Dunbar Subdivision

**Lifestyle Homes**

90 Acres  
100 Detached Units  
57 - 4 Unit Clusters  
from \$144,900 to \$225,000  
Phase I - Close Out Sale

8.9% 15 Year Fixed Interest Rate On Some Close-Out Units

## At These Prices You'll Head for the Hills!

### Heatherwood Village Rochester Hills

3 Bedrooms	4 Bedrooms
\$893.11*	\$948.08*
Fixed 30 years	Fixed 30 years

Come see the selection of homes ready and waiting for you at Heatherwood Village at very attractive prices. Complete traditional style homes. Ready to move into with 3 or 4 bedrooms including master suite, 2 1/2 baths.

Each home is ready for you to live in featuring:

- Family room with fireplace
- Bay window in dining room
- Lee's Carpeting
- Armstrong vinyl flooring
- Whirlpool appliances
- Lighting fixtures

\*Sherwood (3 bedrooms) at \$129,990 purchase price. Loan amount of \$103,950. Payment of \$893.11 is principal and interest only.

\*\*Savannah (4 bedrooms) at \$137,990 purchase price. Loan amount of \$110,400. Payment of \$948.08 is principal and interest only.

BOTH at 9 3/4% fixed 30 year mortgage. Estimated Annual Percentage Rate (APR) of 9.867 with buyer paying 1 discount point. Payments do not reflect property taxes and/or homeowner's insurance. Payments do not reflect closing costs and/or prepaid expenses.

Take Rochester Road 1 block north of Avon. East on Arlington and follow signs to model.

652-4821

**PLUD**

Models open Sunday - Friday 12:00PM - 7:00PM. Saturday 11:00AM - 6:00PM. Brokers are always welcome.