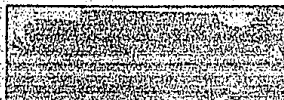
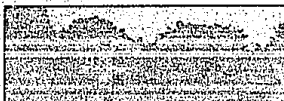


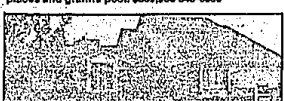
# Merrill Lynch Realty YOU'RE INVITED TO OUR



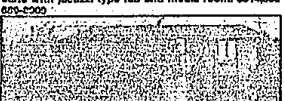
OPEN SUN. 2-6, 4540 Odette Ct., Troy, N. of Wotie, W. of Coolidge. LUXURIOUS LIVABLE! Absolutely stunning custom built 4 bedroom Tudor home in Oak River sub highlights numerous amenities. Includes soaring ceiling, dramatic travertine foyer, spa, French doors off great room and library. \$449,900 645-6000



OPEN SUN. 2-6, 1205 Lake Crescent, S. of Lone Pine, W. of Telegraph. French inspired spacious family home highlights quality appointments. Set on meticulous lot this home features remodeled kitchen, 5-6 bedrooms - including in-law suite, 4 full baths, 2 fireplaces and granite pool. \$449,900 645-6000



OPEN SUN. 2-6, 2016 Sundew, Troy, W. of Coolidge, S. of Long Lake. YOUR SEARCH IS OVER! Truly spectacular and elegant best describes this 2 year old Contemporary. Showcases enormous great room with marble trimmed fireplace, gourmet kitchen, master suite with jacuzzi type tub and media room. \$314,800 655-2509



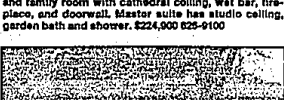
OPEN SUN. 1-4, 3770 Winterest Ct., W.D. W. of Middlebelt, S. of Long Lake. Soft contemporary 2 story home showcases spacious rooms. Highlights family room with wet bar and fireplace, 4 bedrooms, kitchen with island and breakfast nook, new carpet and ceramic floors. Stunning deck and gazebo. D.H. schools. \$229,900 645-6000



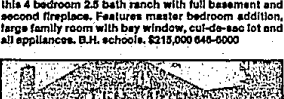
OPEN SUN. 2-6, 115 Hamilton, Birmingham, N. of Maple, W. of Cranbrook. THE TALK OF THE TOWN! Magnificent Colonial located in prime Bloomfield Village area affords 4 family sized bedrooms, library, formal dining room, fireplace, and complete kitchen. Serene treed lot with patio. BIRMINGHAM schools. \$215,000 645-6000



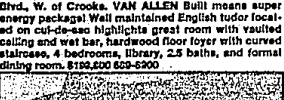
OPEN SUN. 2-6, 4483 Lightway, S. of 10 Mile, E. of Telford. Just 6 months young! Beautiful 4 bedroom, 2.5 bath Colonial NOW! home. Features circular staircase and family room with cathedral ceiling, wet bar, fireplace, and doorways. Master suite has studio ceiling, garden bath and shower. \$224,900 625-9100



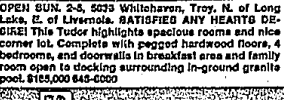
OPEN SUN. 1-4, 6290 Orchard Bend, Birmingham, N. of Maple, E. of Gilbert Lake. Immediate occupancy for this 4 bedroom 2.5 bath ranch with full basement and second fireplace. Features master bedroom addition, large family room with bay window, cut-de-sac lot and all appliances. D.H. schools. \$215,000 645-6000



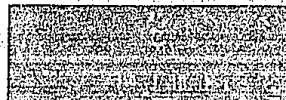
OPEN SUN. 1-4, 8204 Mountain, Troy, S. of South Blvd., W. of Crooks. VAN ALLEN Bull means super energy package! Well maintained English Tudor located on cut-de-sac highlights great room with vaulted ceiling and wet bar, hardwood floor foyer with curved staircase, 4 bedrooms, library, 2.5 baths, and formal dining room. \$194,900 625-8500



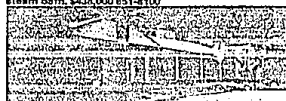
OPEN SUN. 2-6, 6033 Whitehaven, Troy, N. of Long Lake, E. of Livorno. SATISFIED ANY HEARTY DESIRE! This Tudor highlights spacious rooms and nice corner lot. Complete with pegged hardwood floors, 4 bedrooms, and doorways in living room, bath in master bedroom and Birmingham schools. Many updates. \$179,900 625-8500



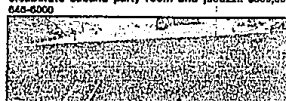
OPEN SUN. 2-6, 6033 Whitehaven, Troy, N. of Long Lake, E. of Livorno. SATISFIED ANY HEARTY DESIRE! This Tudor highlights spacious rooms and nice corner lot. Complete with pegged hardwood floors, 4 bedrooms, and doorways in living room, bath in master bedroom and Birmingham schools. Many updates. \$179,900 625-8500



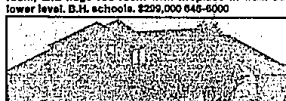
OPEN SUN. 2-6, 2400 Locklin, N. on Hilder to W. on Telegraph, take Birmingham to Timber Trail, BIRMINGHAM. SUNSET VIEWS from this outstanding Contemporary on Union Lake. Private location, sandy beach and West Bloomfield schools. The exceptional floorplan of this building home is highlighted by 5 bedrooms, 3 baths, whirlpool and master suite with steam bath. \$425,000 651-8100



OPEN SUN. 1-4, 1 Hickory Hollow, S. of 14 Mile, E. of Telegraph, take Birmingham to Timber Trail, BIRMINGHAM. SUNSET VIEWS from this outstanding Contemporary on Union Lake. Private location, sandy beach and West Bloomfield schools. The exceptional floorplan of this building home is highlighted by 5 bedrooms, 3 baths, whirlpool and master suite with steam bath. \$425,000 651-8100



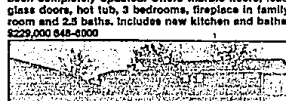
OPEN SUN. 1-4, 2153 Century Oak, W.D. N. of Long Lake, E. of Middlebelt. DRASTICALLY REDUCED! Wonderful Ranch on canal to all sports Upper Long Lake. Approximately 4,000 sq. ft. of living area includes cathedral ceilings in living room and dining room, and huge rec room with fireplace in walk-out lower level. D.H. schools. \$229,000 645-6000



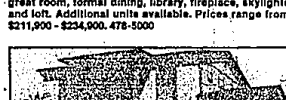
OPEN SUN. 1-4, 4322 Birch Run, S. of Long Lake, E. of Coolidge. A REAL GEM! Superb TROY home rears with enormous master suite on first floor, cathedral ceilings, Euro kitchen with center island cook top and premium appliances, French doors, walk-in closets in 3 bedrooms, and crown moldings. \$255,800 625-9100



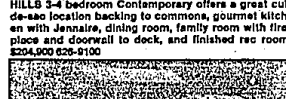
OPEN SUN. 1-4, 3371 Macford, Troy, N. of Maple, W. of Maple, W. of Cranbrook. THROUGHOUT! Better than most new homes this superb Contemporary has been completely updated. Offers marble floors, lead glass doors, hot tub, 3 bedrooms, fireplace in family room and 2.5 baths. Includes new kitchen and bath. \$229,900 645-6000



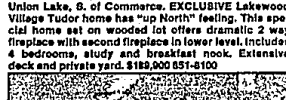
OPEN SAT. & SUN. 1-4, 35721 Tanglewood, Farmington Hills, 14 Mile between Drake and Haledale. Contemporary Townhouse features 3 bedrooms, 2.5 baths, great room, formal dining, library, fireplace, skylights and lot. Additional units in living room, bath in master bedroom and 2.5 baths. Includes new kitchen and bath. \$211,900 - \$234,000, 475-5000



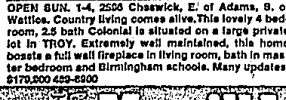
OPEN SUN. 1-4, 31215 Applewood, W. of Drake, S. of 14 Mile, Dearborn, and distinctive, FARMINGTON HILLS 3-4 bedroom Contemporary offers a great cut-de-sac location backing to commons, gourmet kitchen with Jennie, dining room, family room with fireplace and doorways to deck, and finished rec room. \$204,900 625-9100



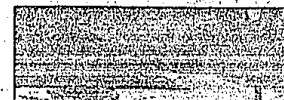
OPEN SUN. 2-6, 5629 Oakleaf, West Bloomfield, E. of Union Lake, S. of Commerce. EXCLUSIVE Lakewood Village Tudor home has "up North" feeling. This special home set on wooded lot offers dramatic 2 way fireplace with second fireplace in lower level. Includes 4 bedrooms, study and breakfast room. Extensive deck and private yard. \$189,900 651-8100



OPEN SUN. 1-4, 2500 Chawick, E. of Adams, S. of Wotie. Country living comes alive. This lovely 4 bedroom, 2.5 bath Colonial is situated on a large private lot in TROY. Extremely well maintained, this home boasts a vast master suite in living room, bath in master bedroom and Birmingham schools. Many updates. \$179,900 625-8500



OPEN SUN. 1-4, 2500 Chawick, E. of Adams, S. of Wotie. Country living comes alive. This lovely 4 bedroom, 2.5 bath Colonial is situated on a large private lot in TROY. Extremely well maintained, this home boasts a vast master suite in living room, bath in master bedroom and Birmingham schools. Many updates. \$179,900 625-8500



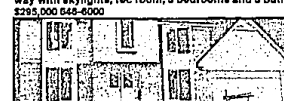
OPEN SUN. 2-6, 5551 W. Carmen Ct., W. of Old Orchard Trail, S. of Commerce. Prestigious LaPays subdivision offers private park, beach access and family courts. This custom Contemporary also includes 4 bedrooms, 2.5 baths, wrap-around deck, sun room, office/studio and a very natural private tree lot. \$299,900 625-9100



OPEN SUN. 2-6, 2225 Hunt Club, Bloomfield Hills N. of Long Lake, W. of Eastways. Superb Colonial home situated on a private corner lot features generously proportioned rooms. Includes master bedroom with fireplace, bath and custom closets, gourmet kitchen, 2 doorways to deck with jacuzzi, 4 bedrooms and 2.5 baths. \$329,900 645-6000



OPEN SAT. 1-4, 835 Bates, N. of Lincoln, W. of Woodward. COMPLETELY AND BEAUTIFULLY renovated Colonial offers a great BIRMINGHAM location, cabaret in kitchen and family room are oiled handmade hickory, fireplace, library, studio hideaway with skylights, rec room, 3 bedrooms and 3 baths. \$295,000 645-6000



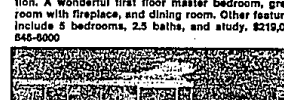
OPEN SUN. 2-6, 7268 Ravines Circle, W. of Haledale, S. of Maple. Classic WEST BLOOMFIELD home presents 4 bedrooms, 2.5 baths, sun room, formal dining room, library/study, breakfast nook, family room, first floor laundry and more. Come explore this New Construction. \$229,900 625-9100



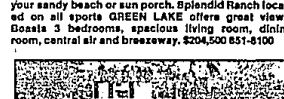
OPEN SUN. 1-4, 4530 Maple, Birmingham, N. side of Maple, W. of Franklin. PICTURESQUE SETTING! Located on 2.5 acres this Contemporary overlooks pond and offers Walnut Lake privileges. Outstanding features include expansive master suite, updated kitchen, central air, 4 bedrooms and 2.5 baths. Birmingham schools. \$229,000 625-9100



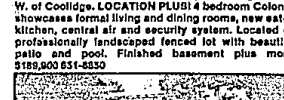
OPEN SUN. 2-6, 29 E. Washington, N. of Dial, E. of Main. FANTASTIC lake front on Parke Lake and lake privileges on Deer Lake plus ideal CLARKSTON location. A wonderful first floor master bedroom, great room with fireplace, and dining room. Other features include 5 bedrooms, 2.5 baths, and study. \$219,000 645-6000



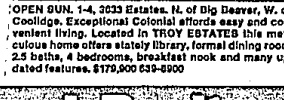
OPEN SUN. 2-6, 6579 Alden, West Bloomfield, N. of Commerce, W. of Hilder. Spend your days relaxing on your sandy beach or sun porch. Splendid Ranch located on all sports GREEN LAKE offers great views. Boasts 3 bedrooms, spacious living room, dining room, central air and breezeway. \$204,500 651-8100



OPEN SUN. 2-6, 5591 Boulder, Troy, N. of Big Beaver, W. of Coolidge. LOCATION PLUS! 4 bedroom Colonial showcases formal living and dining rooms, new eat-in kitchen, central air and security system. Located on professionally landscaped fenced lot with beautiful patio and pool. Finished basement plus more! \$189,900 651-8530



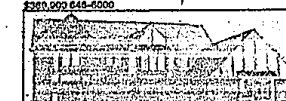
OPEN SUN. 1-4, 2525 Estates, N. of Big Beaver, W. of Coolidge. Exceptional Colonial affords easy and convenient living. Located in TROY ESTATES this meticulous home offers a formal library, formal dining room, 2nd floor master suite and breakfast nook and many updated features. \$179,900 625-8500



OPEN SUN. 1-4, 2525 Estates, N. of Big Beaver, W. of Coolidge. Exceptional Colonial affords easy and convenient living. Located in TROY ESTATES this meticulous home offers a formal library, formal dining room, 2nd floor master suite and breakfast nook and many updated features. \$179,900 625-8500



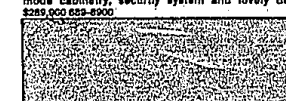
OPEN SUN. 2-6, 507 Kingsley, N. of Long Lake, E. of Kensington. Located in the city of BLOOMFIELD HILLS this spectacular home boasts many quality appointments. Complete with 2 fireplaces, library with built-in bookshelves, 5 bedrooms, large living and family rooms, and finished basement with rec room. \$261,000 645-6000



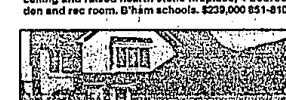
OPEN SUN. 1-4, 2036 Kingsway, N. of Waller, W. of Coolidge. EXQUISITE EXECUTIVE HOME! Located in OAK RIVER subdivision, this beautiful home comes complete with many lavish amenities. Accents dramatic 2 story foyer, expansive master suite sanctuary with bath, special leaded glass windows, and 4 bedrooms. \$330,500 625-9100



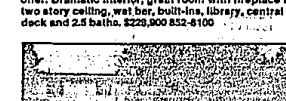
OPEN SUN. 1-4, 1551 Hailmark, N. of Waller, E. of Coolidge. BUILDER'S MODEL. Never lived in phenomenal 4 bedroom, 2.5 bath Colonial offers all the fine amenities. Includes impressive oak floored foyer, circular staircase, wood trim and moldings, wood-mode cabinetry, security system and lovely deck. \$289,000 625-9100



OPEN SUN. 2-6, 5450 Sunnycrest, W.D. N. of Walnut Lake, W. of Inlander. TERRIFIC private treed setting for this sharp contemporary with Walnut Lake privileges. Specialties include open great room with vaulted oak ceiling and raised hearth stone fireplace, 4 bedrooms, den and rec room. D.H. schools. \$239,000 651-8100



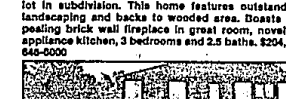
OPEN SAT. & SUN. 1-4, 6375 Noble, West Bloomfield, N. of Maple, W. of Drake. Enjoy the convenience plus the privacy this two bedroom detached Condo has to offer. Dramatic interior, great room with fireplace and two story ceiling, wet bar, built-ins, library, central air, deck and 2.5 baths. \$226,900 652-6100



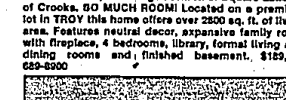
OPEN SUN. 1-4, 3020 Daisy Rose, Bloomfield, N. of Long Lake, W. of Adams. BLOOMFIELD HILLS SCHOOLS! This 4 bedroom, 2.5 bath contemporary has been totally renovated with custom designed kitchen and baths including new wood windows, doors, furnace, central air, flooring and roof. \$219,000 645-6000



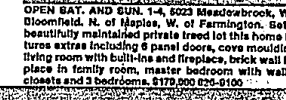
OPEN SUN. 1-4, 30474 Knighton, E. of Haggerty, S. of 14 Mile. CAPTIVATING CONTEMPORARY set on best lot in subdivision. This home features outstanding landscaping and backs to wooded area. Boasts appealing brick wall fireplace in great room, novel all appliance kitchen, 3 bedrooms and 2.5 baths. \$204,500 645-6000



OPEN SUN. 2-6, 617 Bridge Park, N. of Square Lake, E. of Crooks. SO MUCH ROOM! Located on a premium lot in TROY this home offers over 2800 sq. ft. of living area. Features neutral decor, separate family room with fireplace, 4 bedrooms, library, formal living and dining rooms and finished basement. \$189,800 625-9100



OPEN SAT. AND SUN. 1-4, 6023 Meadowbrook, West Bloomfield, N. of Maple, W. of Farmington. Set on beautifully maintained private treed lot this home features extras including 8 panel doors, cove moldings, living room with built-ins and fireplace, brick wall fireplace in family room, master bedroom with walk-in closets and 3 bedrooms. \$179,000 625-9100



OPEN SAT. AND SUN. 1-4, 6023 Meadowbrook, West Bloomfield, N. of Maple, W. of Farmington. Set on beautifully maintained private treed lot this home features extras including 8 panel doors, cove moldings, living room with built-ins and fireplace, brick wall fireplace in family room, master bedroom with walk-in closets and 3 bedrooms. \$179,000 625-9100

## Merrill Lynch Realty

BIRMINGHAM/BLOOMFIELD

645-6000

FRANKLIN/FARMINGTON

626-9100

TROY

689-8900

ROCHESTER

651-8850

WEST BLOOMFIELD

851-8100

NOVI/NORTHVILLE

478-5000

OPEN MONDAY THROUGH SATURDAY 9 AM TO 6 PM OPEN SUNDAYS