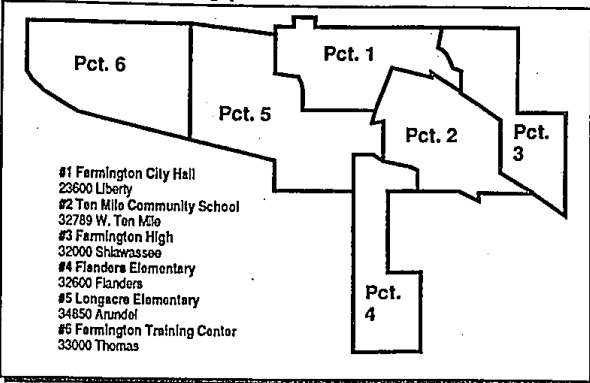
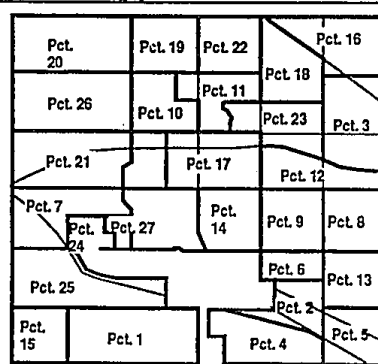


Farmington voting precincts



Hills voting precincts



#1 Power Middle School,
 34740 Phonswood
 #2 Wheeler Fire Hall,
 21420 Wheeler
 #3 Woodcreek School,
 28400 Harwick
 #4 Power Middle School,
 34740 Phonswood
 #5 William Grace School,
 29040 Shawassee
 #6 Larkshire School,
 23800 Tuck Road
 #7 Dunckel Middle School,
 2800 Twelve Mile
 #8 East Middle School,
 25000 Middlebelt
 #9 East Middle School,
 25000 Middlebelt
 #10 Dunckel Middle School,
 32800 Twelve Mile
 #11 North Farmington High,
 32300 Thirteen Mile
 #12 East Middle School,
 25000 Middlebelt
 #13 William Grace School,
 23040 Shawassee
 #14 Alameda School
 32400 Alameda

#15 Gill School
 21195 Gill Road
 #16 Fairview School
 28500 Oak Crest
 #17 Alameda School,
 32400 Alameda
 #18 Highmeadow School,
 30175 Highmeadow
 #19 Forest School,
 34545 Old Timber Road
 #20 Fire Dept. Hqrs.,
 28711 Drake
 #21 Dunckel Middle School,
 32800 Twelve Mile
 #22 North Farmington High,
 32900 Thirteen Mile
 #23 Kenbrook School,
 32130 Bonnet Hill Road
 #24 San Marino Golf Course,
 25634 Halsted
 #25 Gill School,
 21195 Gill Road
 #26 Hope Lutheran Church,
 32900 Twelve Mile
 #27 San Marino Golf Course,
 25634 Halsted

Issues, candidates seen sparking bigger turnout

By Joanne Mallazewski
staff writer

If mushrooming interest and activity over Tuesday's election is any indication, Farmington and Farmington Hills city clerks predict a better-than-usual voter turnout.

"There's a lot more activity this year. I'm gearing up for even more activity at the polls. I could be wrong, though," Farmington Hills city clerk Kathy Dorman said.

Farmington city clerk Josephine Bushey agreed. "There wasn't a lot of interest at first. But it's grown in the last two weeks."

Both clerks attribute the interest and activity to the city council candidates seeking election and reelection, and to a lesser degree, the two statewide ballot proposals.

"Our candidates have been exceptionally active. They've been out campaigning. And they've shown a great interest in the absentee ballots," Bushey said.

Dorman expects election night to be the crowning glory to the fer-

vent campaigning in the Hills. The city hall lobby, complete with cable television cameras, is expected to be filled with candidates and their families and friends, she said.

"THERE'S BEEN FRSO much interest. Everyday, candidates are in at the city clerk's counter asking for mailing lists. And they've generated an interest in the people, who also are coming in," Dorman said.

The clerks are hoping the interest will translate into a healthy voter turnout Tuesday. Bushey is taking a guess at a 10-15 percent turnout, more than the 6-7 percent of ballots cast in the 1987 council election. Dorman predicts an 18-20 percent turnout, compared to the 14 percent turnout in the 1987 council race, which was considered poor.

Comparison to last year, with a voter turnout topping 70 percent in both cities, may be misleading be-

cause it was a presidential election, which historically generates larger turnouts than local elections.

IN BOTH cities this year, the number of registered voters has decreased. Dorman's staff has spent months clearing out of voter registration files and canceled 3,000 voters, who no longer are in the city. Registered voters total 42,864. In Farmington, registered voters total 7,339, a drop from 8,242 in 1987. "There's been a lot of turnover and a number of deaths," Bushey said.

Candidates have had good reason for their interest in absentee voters. As of late last week, AV ballots increased to 6,500 from 3,200 in 1987. In Farmington, they increased to 509 from 298 two years ago.

But both clerks said those numbers probably are not final counts because they were still accepting last-minute AV ballots through 2 p.m. Saturday.



RANDY BORST/staff photographer

Deputy city clerk Sue Rose (left) and city clerk Kathy Dorman with Farmington Hills' new election tabulating equipment. The device at right reads punch cards, and the computer in front of Dorman collects results. The final result comes off a printer.

New equipment to help count Hills votes faster

By Sue Duck
staff writer

Voting ballots are expected to zip through quicker this year, thanks to new election and tabulation equipment.

Farmington Hills bought \$45,000 worth of equipment after the breakdown of equipment 12-15 years old in 1988. The counter unit broke down with four precincts still uncounted on election night last November.

Under a reciprocal agreement, West Bloomfield, which had the same type of equipment as Farmington Hills, allowed Kathy Dorman, city clerk, to finish her work there.

"This broke down about 2:30 a.m.," she said. "We were on the phone until 3:30 a.m., then we had to wait hours for West Bloomfield to

finish, so we couldn't even start counting over there until 8 a.m."

"We didn't have the totals from the precincts and we had to manually count the ones we did here and the ones we did there. I sent my deputy home at noon and I went home at 4 p.m. I started at 5 p.m. the day before."

Two months ago, Dorman, current deputy clerk Sue Rose and staff member Dawn Morin, in charge of voter registrations, attended three-day classes in Chicago to learn how to set up and program the equipment.

"We've run some test runs and we have a direct line to Chicago," Dorman said.

CARDS ONCE needed to be key-punched with the candidates' names,

office, etc. Much of the work now is done internally in the unit, Dorman said.

Dorman became clerk 18 months ago. She was originally hired as deputy clerk to JoAnn Reynolds five years ago. She previously was deputy clerk-treasurer for the city of Walling Lake.

"It's the newest equipment out," Dorman said of the Business Records Inc. machinery. "It's much more sophisticated. There's no question on accuracy. Any equipment used in elections has to be approved by the state board, and there's not a lot of choices out to be approved."

On election night Tuesday, Nov. 7, staff people will be on duty.

The polls will be open 7 a.m. to 8 p.m. About 180 workers will work in the 37 Farmington Hills voting precincts. The largest precinct is No. 20 with 3,000 voters in the Haggerty-14 Mile-Halsted area. The smallest is No. 7 with 500 voters in the Industrial Park area.

"We get all kinds of calls from people asking if they are registered," Dorman said. "The rule of thumb is that if people voted in the last four years, they are in our active files and are eligible to vote and are registered."

"If they are registered with us, but haven't voted in the last four years, but voted in the six years prior to that, they are in an inactive file and they are still eligible to vote."

Any voting activity within 10 years qualifies registered voters to vote.

Builder defends rezoning

Continued from Page 1

• He has worked closely with the condominium association to assure the development protects the privacy, quality of life and property values of the residents. "They (condominium residents) are satisfied and support the rezoning as being in their best interest."

Hillside president Dick Isham agreed. He said Kaftan "was more than agreeable to lay out the property as best as it could be laid out there. I'm reasonably comfortable with Kaftan. Certainly we don't think office (use) is better there than IRO."

• Farmington Hills' ordinances and enforcement policies are "capable of effectively controlling the use of hazardous and toxic substances in industry and research."

Isham again agreed. "We feel the city has enough control on IROs that we won't have any serious problems."

A year ago, the condominium association opposed the rezoning request, but changes in the zoning ordinance were made that satisfied the early opponents.

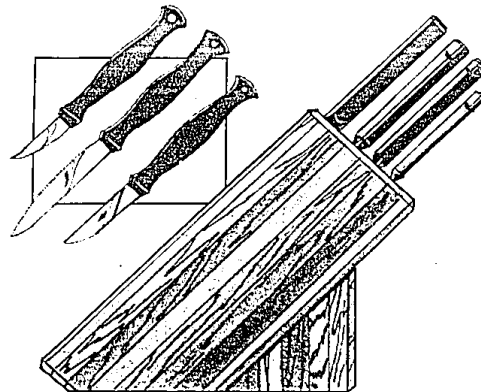
• Kaftan's development would have additional control with a tenant screening process and use restrictions on the land. "No tenant wants to be near toxic material use. Commercial tenants have the same concerns as local residents."

• Banning IRO would deprive the city of its high-tech research companies, resulting in a loss of tax base.

KAFTAN'S REZONING request was postponed until after Tuesday's city council election. But a moratorium established in September remains on other IRO rezonings. It does not affect existing IRO zones.

The moratorium was imposed pending a study by a toxicity and hazardous materials study committee, the formation of which was led by councilman Philip Arnold.

The IRO dispute began with a 1988 IRO-related zoning ordinance amendment allowing city planners to review proposed land uses, schedule a public hearing and impose special conditions, such as land use controls, to exclude toxic chemicals in the zoning district.



ESSENTIAL TO ANY KITCHEN!

This 5 piece cutlery/knife block set by Gerber cuts as good as it looks.

The exclusive Balance Plus system of knife construction brings comfort and cutting ease to your kitchen.

Set includes 8" cook's knife,

5 1/2" utility knife, 4" paring knife,

9 1/2" steel and wooden block.

Also includes a bonus 3 piece gadget paring set. Cutlery set, \$132.

Jacobson's

We welcome Jacobson's Charge and American Express®
 Shop until 9 p.m. on Thursday and Friday! Until 6 p.m. on Monday, Tuesday, Wednesday and Saturday.

Election results on cable

For live election night coverage, tune to local-access cable Channel 13 at 7:30 p.m. Tuesday, Nov. 7. The broadcast is a joint effort of the Farmington Hills and Oakdale County Cable Access Commission and the Farmington Hills and Oakdale County Cable Access Commission. The broadcast will be shown on local-access cable Channel 13 at 7:30 p.m. Tuesday, Nov. 7. The broadcast is a joint effort of the Farmington Hills and Oakdale County Cable Access Commission and the Farmington Hills and Oakdale County Cable Access Commission. The broadcast will be shown on local-access cable Channel 13 at 7:30 p.m. Tuesday, Nov. 7. The broadcast is a joint effort of the Farmington Hills and Oakdale County Cable Access Commission and the Farmington Hills and Oakdale County Cable Access Commission. The broadcast will be shown on local-access cable Channel 13 at 7:30 p.m. Tuesday, Nov. 7. The broadcast is a joint effort of the Farmington Hills and Oakdale County Cable Access Commission and the Farmington Hills and Oakdale County Cable Access Commission. The broadcast will be shown on local-access cable Channel 13 at 7:30 p.m. Tuesday, Nov. 7. The broadcast is a joint effort of the Farmington Hills and Oakdale County Cable Access Commission and the Farmington Hills and Oakdale County Cable Access Commission. The broadcast will be shown on local-access cable Channel 13 at 7:30 p.m. Tuesday, Nov. 7. The broadcast is a joint effort of the Farmington Hills and Oakdale County Cable Access Commission and the Farmington Hills and Oakdale County Cable Access Commission. The broadcast will be shown on local-access cable Channel 13 at 7:30 p.m. Tuesday, Nov. 7. The broadcast is a joint effort of the Farmington Hills and Oakdale County Cable Access Commission and the Farmington Hills and Oakdale County Cable Access Commission. The broadcast will be shown on local-access cable Channel 13 at 7:30 p.m. Tuesday, Nov. 7. The broadcast is a joint effort of the Farmington Hills and Oakdale County Cable Access Commission and the Farmington Hills and Oakdale County Cable Access Commission. The broadcast will be shown on local-access cable Channel 13 at 7:30 p.m. Tuesday, Nov. 7. The broadcast is a joint effort of the Farmington Hills and Oakdale County Cable Access Commission and the Farmington Hills and Oakdale County Cable Access Commission. The broadcast will be shown on local-access cable Channel 13 at 7:30 p.m. Tuesday, Nov. 7. The broadcast is a joint effort of the Farmington Hills and Oakdale County Cable Access Commission and the Farmington Hills and Oakdale County Cable Access Commission. The broadcast will be shown on local-access cable Channel 13 at 7:30 p.m. Tuesday, Nov. 7. The broadcast is a joint effort of the Farmington Hills and Oakdale County Cable Access Commission and the Farmington Hills and Oakdale County Cable Access Commission. The broadcast will be shown on local-access cable Channel 13 at 7:30 p.m. Tuesday, Nov. 7. The broadcast is a joint effort of the Farmington Hills and Oakdale County Cable Access Commission and the Farmington Hills and Oakdale County Cable Access Commission. The broadcast will be shown on local-access cable Channel 13 at 7:30 p.m. Tuesday, Nov. 7. The broadcast is a joint effort of the Farmington Hills and Oakdale County Cable Access Commission and the Farmington Hills and Oakdale County Cable Access Commission. The broadcast will be shown on local-access cable Channel 13 at 7:30 p.m. Tuesday, Nov. 7. The broadcast is a joint effort of the Farmington Hills and Oakdale County Cable Access Commission and the Farmington Hills and Oakdale County Cable Access Commission. The broadcast will be shown on local-access cable Channel 13 at 7:30 p.m. Tuesday, Nov. 7. The broadcast is a joint effort of the Farmington Hills and Oakdale County Cable Access Commission and the Farmington Hills and Oakdale County Cable Access Commission. The broadcast will be shown on local-access cable Channel 13 at 7:30 p.m. Tuesday, Nov. 7. The broadcast is a joint effort of the Farmington Hills and Oakdale County Cable Access Commission and the Farmington Hills and Oakdale County Cable Access Commission. The broadcast will be shown on local-access cable Channel 13 at 7:30 p.m. Tuesday, Nov. 7. The broadcast is a joint effort of the Farmington Hills and Oakdale County Cable Access Commission and the Farmington Hills and Oakdale County Cable Access Commission. The broadcast will be shown on local-access cable Channel 13 at 7:30 p.m. Tuesday, Nov. 7. The broadcast is a joint effort of the Farmington Hills and Oakdale County Cable Access Commission and the Farmington Hills and Oakdale County Cable Access Commission. The broadcast will be shown on local-access cable Channel 13 at 7:30 p.m. Tuesday, Nov. 7. The broadcast is a joint effort of the Farmington Hills and Oakdale County Cable Access Commission and the Farmington Hills and Oakdale County Cable Access Commission. The broadcast will be shown on local-access cable Channel 13 at 7:30 p.m. Tuesday, Nov. 7. The broadcast is a joint effort of the Farmington Hills and Oakdale County Cable Access Commission and the Farmington Hills and Oakdale County Cable Access Commission. The broadcast will be shown on local-access cable Channel 13 at 7:30 p.m. Tuesday, Nov. 7. The broadcast is a joint effort of the Farmington Hills and Oakdale County Cable Access Commission and the Farmington Hills and Oakdale County Cable Access Commission. The broadcast will be shown on local-access cable Channel 13 at 7:30 p.m. Tuesday, Nov. 7. The broadcast is a joint effort of the Farmington Hills and Oakdale County Cable Access Commission and the Farmington Hills and Oakdale County Cable Access Commission. The broadcast will be shown on local-access cable Channel 13 at 7:30 p.m. Tuesday, Nov. 7. The broadcast is a joint effort of the Farmington Hills and Oakdale County Cable Access Commission and the Farmington Hills and Oakdale County Cable Access Commission. The broadcast will be shown on local-access cable Channel 13 at 7:30 p.m. Tuesday, Nov. 7. The broadcast is a joint effort of the Farmington Hills and Oakdale County Cable Access Commission and the Farmington Hills and Oakdale County Cable Access Commission. The broadcast will be shown on local-access cable Channel 13 at 7:30 p.m. Tuesday, Nov. 7. The broadcast is a joint effort of the Farmington Hills and Oakdale County Cable Access Commission and the Farmington Hills and Oakdale County Cable Access Commission. The broadcast will be shown on local-access cable Channel 13 at 7:30 p.m. Tuesday, Nov. 7. The broadcast is a joint effort of the Farmington Hills and Oakdale County Cable Access Commission and the Farmington Hills and Oakdale County Cable Access Commission. The broadcast will be shown on local-access cable Channel 13 at 7:30 p.m. Tuesday, Nov. 7. The broadcast is a joint effort of the Farmington Hills and Oakdale County Cable Access Commission and the Farmington Hills and Oakdale County Cable Access Commission. The broadcast will be shown on local-access cable Channel 13 at 7:30 p.m. Tuesday, Nov. 7. The broadcast is a joint effort of the Farmington Hills and Oakdale County Cable Access Commission and the Farmington Hills and Oakdale County Cable Access Commission. The broadcast will be shown on local-access cable Channel 13 at 7:30 p.m. Tuesday, Nov. 7. The broadcast is a joint effort of the Farmington Hills and Oakdale County Cable Access Commission and the Farmington Hills and Oakdale County Cable Access Commission. The broadcast will be shown on local-access cable Channel 13 at 7:30 p.m. Tuesday, Nov. 7. The broadcast is a joint effort of the Farmington Hills and Oakdale County Cable Access Commission and the Farmington Hills and Oakdale County Cable Access Commission. The broadcast will be shown on local-access cable Channel 13 at 7:30 p.m. Tuesday, Nov. 7. The broadcast is a joint effort of the Farmington Hills and Oakdale County Cable Access Commission and the Farmington Hills and Oakdale County Cable Access Commission. The broadcast will be shown on local-access cable Channel 13 at 7:30 p.m. Tuesday, Nov. 7. The broadcast is a joint effort of the Farmington Hills and Oakdale County Cable Access Commission and the Farmington Hills and Oakdale County Cable Access Commission. The broadcast will be shown on local-access cable Channel 13 at 7:30 p.m. Tuesday, Nov. 7. The broadcast is a joint effort of the Farmington Hills and Oakdale County Cable Access Commission and the Farmington Hills and Oakdale County Cable Access Commission. The broadcast will be shown on local-access cable Channel 13 at 7:30 p.m. Tuesday, Nov. 7. The broadcast is a joint effort of the Farmington Hills and Oakdale County Cable Access Commission and the Farmington Hills and Oakdale County Cable Access Commission. The broadcast will be shown on local-access cable Channel 13 at 7:30 p.m. Tuesday, Nov. 7. The broadcast is a joint effort of the Farmington Hills and Oakdale County Cable Access Commission and the Farmington Hills and Oakdale County Cable Access Commission. The broadcast will be shown on local-access cable Channel 13 at 7:30 p.m. Tuesday, Nov. 7. The broadcast is a joint effort of the Farmington Hills and Oakdale County Cable Access Commission and the Farmington Hills and Oakdale County Cable Access Commission. The broadcast will be shown on local-access cable Channel 13 at 7:30 p.m. Tuesday, Nov. 7. The broadcast is a joint effort of the Farmington Hills and Oakdale County Cable Access Commission and the Farmington Hills and Oakdale County Cable Access Commission. The broadcast will be shown on local-access cable Channel 13 at 7:30 p.m. Tuesday, Nov. 7. The broadcast is a joint effort of the Farmington Hills and Oakdale County Cable Access Commission and the Farmington Hills and Oakdale County Cable Access Commission. The broadcast will be shown on local-access cable Channel 13 at 7:30 p.m. Tuesday, Nov. 7. The broadcast is a joint effort of the Farmington Hills and Oakdale County Cable Access Commission and the Farmington Hills and Oakdale County Cable Access Commission. The broadcast will be shown on local-access cable Channel 13 at 7:30 p.m. Tuesday, Nov. 7. The broadcast is a joint effort of the Farmington Hills and Oakdale County Cable Access Commission and the Farmington Hills and Oakdale County Cable Access Commission. The broadcast will be shown on local-access cable Channel 13 at 7:30 p.m. Tuesday, Nov. 7. The broadcast is a joint effort of the Farmington Hills and Oakdale County Cable Access Commission and the Farmington Hills and Oakdale County Cable Access Commission. The broadcast will be shown on local-access cable Channel 13 at 7:30 p.m. Tuesday, Nov. 7. The broadcast is a joint effort of the Farmington Hills and Oakdale County Cable Access Commission and the Farmington Hills and Oakdale County Cable Access Commission. The broadcast will be shown on local-access cable Channel 13 at 7:30 p.m. Tuesday, Nov. 7. The broadcast is a joint effort of the Farmington Hills and Oakdale County Cable Access Commission and the Farmington Hills and Oakdale County Cable Access Commission. The broadcast will be shown on local-access cable Channel 13 at 7:30 p.m. Tuesday, Nov. 7. The broadcast is a joint effort of the Farmington Hills and Oakdale County Cable Access Commission and the Farmington Hills and Oakdale County Cable Access Commission. The broadcast will be shown on local-access cable Channel 13 at 7:30 p.m. Tuesday, Nov. 7. The broadcast is a joint effort of the Farmington Hills and Oakdale County Cable Access Commission and the Farmington Hills and Oakdale County Cable Access Commission. The broadcast will be shown on local-access cable Channel 13 at 7:30 p.m. Tuesday, Nov. 7. The broadcast is a joint effort of the Farmington Hills and Oakdale County Cable Access Commission and the Farmington Hills and Oakdale County Cable Access Commission. The broadcast will be shown on local-access cable Channel 13 at 7:30 p.m. Tuesday, Nov. 7. The broadcast is a joint effort of the Farmington Hills and Oakdale County Cable Access Commission and the Farmington Hills and Oakdale County Cable Access Commission. The broadcast will be shown on local-access cable Channel 13 at 7:30 p.m. Tuesday, Nov. 7. The broadcast is a joint effort of the Farmington Hills and Oakdale County Cable Access Commission and the Farmington Hills and Oakdale County Cable Access Commission. The broadcast will be shown on local-access cable Channel 13 at 7:30 p.m. Tuesday, Nov. 7. The broadcast is a joint effort of the Farmington Hills and Oakdale County Cable Access Commission and the Farmington Hills and Oakdale County Cable Access Commission. The broadcast will be shown on local-access cable Channel 13 at 7:30 p.m. Tuesday, Nov. 7. The broadcast is a joint effort of the Farmington Hills and Oakdale County Cable Access Commission and the Farmington Hills and Oakdale County Cable Access Commission. The broadcast will be shown on local-access cable Channel 13 at 7:30 p.m. Tuesday, Nov. 7. The broadcast is a joint effort of the Farmington Hills and Oakdale County Cable Access Commission and the Farmington Hills and Oakdale County Cable Access Commission. The broadcast will be shown on local-access cable Channel 13 at 7:30 p.m. Tuesday, Nov. 7. The broadcast is a joint effort of the Farmington Hills and Oakdale County Cable Access Commission and the Farmington Hills and Oakdale County Cable Access Commission. The broadcast will be shown on local-access cable Channel 13 at 7:30 p.m. Tuesday, Nov. 7. The broadcast is a joint effort of the Farmington Hills and Oakdale County Cable Access Commission and the Farmington Hills and Oakdale County Cable Access Commission. The broadcast will be shown on local-access cable Channel 13 at 7:30 p.m. Tuesday, Nov. 7. The broadcast is a joint effort of the Farmington Hills and Oakdale County Cable Access Commission and the Farmington Hills and Oakdale County Cable Access Commission. The broadcast will be shown on local-access cable Channel 13 at 7:30 p.m. Tuesday, Nov. 7. The broadcast is a joint effort of the Farmington Hills and Oakdale County Cable Access Commission and the Farmington Hills and Oakdale County Cable Access Commission. The broadcast will be shown on local-access cable Channel 13 at 7:30 p.m. Tuesday, Nov. 7. The broadcast is a joint effort of the Farmington Hills and Oakdale County Cable Access Commission and the Farmington Hills and Oakdale County Cable Access Commission. The broadcast will be shown on local-access cable Channel 13 at 7:30 p.m. Tuesday, Nov. 7. The broadcast is a joint effort of the Farmington Hills and Oakdale County Cable Access Commission and the Farmington Hills and Oakdale County Cable Access Commission. The broadcast will be shown on local-access cable Channel 13 at 7:30 p.m. Tuesday, Nov. 7. The broadcast is a joint effort of the Farmington Hills and Oakdale County Cable Access Commission and the Farmington Hills and Oakdale County Cable Access Commission. The broadcast will be shown on local-access cable Channel 13 at 7:30 p.m. Tuesday, Nov. 7. The broadcast is a joint effort of the Farmington Hills and Oakdale County Cable Access Commission and the Farmington Hills and Oakdale County Cable Access Commission. The broadcast will be shown on local-access cable Channel 13 at 7:30 p.m. Tuesday, Nov. 7. The broadcast is a joint effort of the Farmington Hills and Oakdale County Cable Access Commission and the Farmington Hills and Oakdale County Cable Access Commission. The broadcast will be shown on local-access cable Channel 13 at 7:30 p.m. Tuesday, Nov. 7. The broadcast is a joint effort of the Farmington Hills and Oakdale County Cable Access Commission and the Farmington Hills and Oakdale County Cable Access Commission. The broadcast will be shown on local-access cable Channel 13 at 7:30 p.m. Tuesday, Nov. 7. The broadcast is a joint effort of the Farmington Hills and Oakdale County Cable Access Commission and the Farmington Hills and Oakdale County Cable Access Commission. The broadcast will be shown on local-access cable Channel 13 at 7:30 p.m. Tuesday, Nov. 7. The broadcast is a joint effort of the Farmington Hills and Oakdale County Cable Access Commission and the Farmington Hills and Oakdale County Cable Access Commission. The broadcast will be shown on local-access cable Channel 13 at 7:30 p.m. Tuesday, Nov. 7. The broadcast is a joint effort of the Farmington Hills and Oakdale County Cable Access Commission and the Farmington Hills and Oakdale County Cable Access Commission. The broadcast will be shown on local-access cable Channel 13 at 7:30 p.m. Tuesday, Nov. 7. The broadcast is a joint effort of the Farmington Hills and Oakdale County Cable Access Commission and the Farmington Hills and Oakdale County Cable Access Commission. The broadcast will be shown on local-access cable Channel 13 at 7:30 p.m. Tuesday, Nov. 7. The broadcast is a joint effort of the Farmington Hills and Oakdale County Cable Access Commission and the Farmington Hills and Oakdale County Cable Access Commission. The broadcast will be shown on local-access cable Channel 13 at 7:30 p.m. Tuesday, Nov. 7. The broadcast is a joint effort of the Farmington Hills and Oakdale County Cable Access Commission and the Farmington Hills and Oakdale County Cable Access Commission. The broadcast will be shown on local-access cable Channel 13 at 7:30 p.m. Tuesday, Nov. 7. The broadcast is a joint effort of the Farmington Hills and Oakdale County Cable Access Commission and the Farmington Hills and Oakdale County Cable Access Commission. The broadcast will be shown on local-access cable Channel 13 at 7:30 p.m. Tuesday, Nov. 7. The broadcast is a joint effort of the Farmington Hills and Oakdale County Cable Access Commission and the Farmington Hills and Oakdale County Cable Access Commission. The broadcast will be shown on local-access cable Channel 13 at 7:30 p.m. Tuesday, Nov. 7. The broadcast is a joint effort of the Farmington Hills and Oakdale County Cable Access Commission and the Farmington Hills and Oakdale County Cable Access Commission. The broadcast will be shown on local-access cable Channel 13 at 7:30 p.m. Tuesday, Nov. 7. The broadcast is a joint effort of the Farmington Hills and Oakdale County Cable Access Commission and the Farmington Hills and Oakdale County Cable Access Commission. The broadcast will be shown on local-access cable Channel 13 at 7:30 p.m. Tuesday, Nov. 7. The broadcast is a joint effort of the Farmington Hills and Oakdale County Cable Access Commission and the Farmington Hills and Oakdale County Cable Access Commission. The broadcast will be shown on local-access cable Channel 13 at 7:30 p.m. Tuesday, Nov. 7. The broadcast is a joint effort of the Farmington Hills and Oakdale County Cable Access Commission and the Farmington Hills and Oakdale County Cable Access Commission. The broadcast will be shown on local-access cable Channel 13 at 7:30 p.m. Tuesday, Nov. 7. The broadcast is a joint effort of the Farmington Hills and Oakdale County Cable Access Commission and the Farmington Hills and Oakdale County Cable Access Commission. The broadcast will be shown on local-access cable Channel 13 at 7:30 p.m. Tuesday, Nov. 7. The broadcast is a joint effort of the Farmington Hills and Oakdale County Cable Access Commission and the Farmington Hills and Oakdale County Cable Access Commission. The broadcast will be shown on local-access cable Channel 13 at 7:30 p.m. Tuesday, Nov. 7. The broadcast is a joint effort of the Farmington Hills and Oakdale County Cable Access Commission and the Farmington Hills and Oakdale County Cable Access Commission. The broadcast will be shown on local-access cable Channel 13 at 7:30 p.m. Tuesday, Nov. 7. The broadcast is a joint effort of the Farmington Hills and Oakdale County Cable Access Commission and the Farmington Hills and Oakdale County Cable Access Commission. The broadcast will be shown on local-access cable Channel 13 at 7:30 p.m. Tuesday, Nov. 7. The broadcast is a joint effort of the Farmington Hills and Oakdale County Cable Access Commission and the Farmington Hills and Oakdale County Cable Access Commission. The broadcast will be shown on local-access cable Channel 13 at 7:30 p.m. Tuesday, Nov. 7. The broadcast is a joint effort of the Farmington Hills and Oakdale County Cable Access Commission and the Farmington Hills and Oakdale County Cable Access Commission. The broadcast will be shown on local-access cable Channel 13 at 7:30 p.m. Tuesday, Nov. 7. The broadcast is a joint effort of the Farmington Hills and Oakdale County Cable Access Commission and the Farmington Hills and Oakdale County Cable Access Commission. The broadcast will be shown on local-access cable Channel 13 at 7:30 p.m. Tuesday, Nov. 7. The broadcast is a joint effort of the Farmington Hills and Oakdale County Cable Access Commission and the Farmington Hills and Oakdale County Cable Access Commission. The broadcast will be shown on local-access cable Channel 13 at 7:30 p.m. Tuesday, Nov. 7. The broadcast is a joint effort of the Farmington Hills and Oakdale County Cable Access Commission and the Farmington Hills and Oakdale County Cable Access Commission. The broadcast will be shown on local-access cable Channel 13 at 7:30 p.m. Tuesday, Nov. 7. The broadcast is a joint effort of the Farmington Hills and Oakdale County Cable Access Commission and the Farmington Hills and Oakdale County Cable Access Commission. The broadcast will be shown on local-access cable Channel 13 at 7:30 p.m. Tuesday, Nov. 7. The broadcast is a joint effort of the Farmington Hills and Oakdale County Cable Access Commission and the Farmington Hills and Oakdale County Cable Access Commission. The broadcast will be shown on local-access cable Channel 13 at 7:30 p.m. Tuesday, Nov. 7. The broadcast is a joint effort of the Farmington Hills and Oakdale County Cable Access Commission and the Farmington Hills and Oakdale County Cable Access Commission. The broadcast will be shown on local-access cable Channel 13 at 7:30 p.m. Tuesday, Nov. 7. The broadcast is a joint effort of the Farmington Hills and Oakdale County Cable Access Commission and the Farmington Hills and Oakdale County Cable Access Commission. The broadcast will be shown on local-access cable Channel 13 at 7:30 p.m. Tuesday, Nov. 7. The broadcast is a joint effort of the Farmington Hills and Oakdale County Cable Access Commission and the Farmington Hills and Oakdale County Cable Access Commission. The broadcast will be shown on local-access cable Channel 13 at 7:30 p.m. Tuesday, Nov. 7. The broadcast is a joint effort of the Farmington Hills and Oakdale County Cable Access Commission and the Farmington Hills and Oakdale County Cable Access Commission. The broadcast will be shown on local-access cable Channel 13 at 7:30 p.m. Tuesday, Nov. 7. The broadcast is a joint effort of the Farmington Hills and Oakdale County Cable Access Commission and the Farmington Hills and Oakdale County Cable Access Commission. The broadcast will be shown on local-access cable Channel 13 at 7:30 p.m. Tuesday, Nov. 7. The broadcast is a joint effort of the Farmington Hills and Oakdale County Cable Access Commission and the Farmington Hills and Oakdale County Cable Access Commission. The broadcast will be shown on local-access cable Channel 13 at 7:30 p.m. Tuesday, Nov. 7. The broadcast is a joint effort of the Farmington Hills and Oakdale County Cable Access Commission and the Farmington Hills and Oakdale County Cable Access Commission. The broadcast will be shown on local-access cable Channel 13 at 7:30 p.m. Tuesday, Nov. 7. The broadcast is a joint effort of the Farmington Hills and Oakdale County Cable Access Commission and the Farmington Hills and Oakdale County Cable Access Commission. The broadcast will be shown on local-access cable Channel 13 at 7:30 p.m. Tuesday, Nov. 7. The broadcast is a joint effort of the Farmington Hills and Oakdale County Cable Access Commission and the Farmington Hills and Oakdale County Cable Access Commission. The broadcast will be shown on local-access cable Channel 13 at 7:30 p.m. Tuesday, Nov. 7. The broadcast is a joint effort of the Farmington Hills and Oakdale County Cable Access Commission and the Farmington Hills and Oakdale County Cable Access Commission. The broadcast will be shown on local-access cable Channel 13 at 7:30 p.m. Tuesday, Nov. 7. The broadcast is a joint effort of the Farmington Hills and Oakdale County Cable Access Commission and the Farmington Hills and Oakdale County Cable Access Commission. The broadcast will be shown on local-access cable Channel 13 at 7:30 p.m. Tuesday, Nov. 7. The broadcast is a joint effort of the Farmington Hills and Oakdale County Cable Access Commission and the Farmington Hills and Oakdale County Cable Access Commission. The broadcast will be shown on local-access cable Channel 13 at 7:30 p.m. Tuesday, Nov. 7. The broadcast is a joint effort of the Farmington Hills and Oakdale County Cable Access Commission and the Farmington Hills and Oakdale County Cable Access Commission. The broadcast will be shown on local-access cable Channel 13 at 7:30 p.m. Tuesday, Nov. 7. The broadcast is a joint effort of the Farmington Hills and Oakdale County Cable Access Commission and the Farmington Hills and Oakdale County Cable Access Commission. The broadcast will be shown on local-access cable Channel 13 at 7:30 p.m. Tuesday, Nov. 7. The broadcast is a joint effort of the Farmington Hills and Oakdale County Cable Access Commission and the Farmington Hills and Oakdale County Cable Access Commission. The broadcast will be shown on local-access cable Channel 13 at 7:30 p.m. Tuesday, Nov. 7. The broadcast is a joint effort of the Farmington Hills and Oakdale County Cable Access Commission and the Farmington Hills and Oakdale County Cable Access Commission. The broadcast will be shown on local-access cable Channel 13 at 7:30 p.m. Tuesday, Nov. 7. The broadcast is a joint effort of the Farmington Hills and Oakdale County Cable Access Commission and the Farmington Hills and Oakdale County Cable Access Commission. The broadcast will be shown on local-access cable Channel 13 at 7:30 p.m. Tuesday, Nov. 7. The broadcast is a joint effort of the Farmington Hills and Oakdale County Cable Access Commission and the Farmington Hills and Oakdale County Cable Access Commission. The broadcast will be shown on local-access cable Channel 13 at 7:30 p.m. Tuesday, Nov. 7. The broadcast is a joint effort of the Farmington Hills and Oakdale County Cable Access Commission and the Farmington Hills and Oakdale County Cable Access Commission. The broadcast will be shown on local-access cable Channel 13 at 7:30 p.m. Tuesday, Nov. 7. The broadcast is a joint effort of the Farmington Hills and Oakdale County Cable Access Commission and the Farmington Hills and Oakdale County Cable Access Commission. The broadcast will be shown on local-access cable Channel 13 at 7:30 p.m. Tuesday, Nov. 7. The broadcast is a joint effort of the Farmington Hills and Oakdale County Cable Access Commission and the Farmington Hills and Oakdale County Cable Access Commission. The broadcast will be shown on local-access cable Channel 13 at 7:30 p.m. Tuesday, Nov. 7. The broadcast is a joint effort of the Farmington Hills and Oakdale County Cable Access Commission and the Farmington Hills and Oakdale County Cable Access Commission. The broadcast will be shown on local-access cable Channel 13 at 7:30 p.m. Tuesday, Nov. 7. The broadcast is a joint effort of the Farmington Hills and Oakdale County Cable Access Commission and the Farmington Hills and Oakdale County Cable Access Commission. The broadcast will be shown on local-access cable Channel 13 at 7:30 p.m. Tuesday, Nov. 7. The broadcast is a joint effort of the Farmington Hills and Oakdale County Cable Access Commission and the Farmington Hills and Oakdale County Cable Access Commission. The broadcast will be shown on local-access cable Channel 13 at 7:30 p.m. Tuesday, Nov. 7. The broadcast is a joint effort of the Farmington Hills and Oakdale County Cable Access Commission and the Farmington Hills and Oakdale County Cable Access Commission. The broadcast will be shown on local-access cable Channel 13 at 7:30 p.m. Tuesday, Nov. 7. The broadcast is a joint effort of the Farmington Hills and Oakdale County Cable Access Commission and the Farmington Hills and Oakdale County Cable Access Commission. The broadcast will be shown on local-access cable Channel 13 at 7:30 p.m. Tuesday, Nov. 7. The broadcast is a joint effort of the Farmington Hills and Oakdale County Cable Access Commission and the Farmington Hills and Oakdale County Cable Access Commission. The broadcast will be shown on local-access cable Channel 13 at 7:30 p.m. Tuesday, Nov. 7. The broadcast is a joint effort of the Farmington Hills and Oakdale County Cable Access Commission and the Farmington Hills and Oakdale County Cable Access Commission. The broadcast will be shown on local-access cable Channel 13 at 7:30 p.m. Tuesday, Nov. 7. The broadcast is a joint effort of the Farmington Hills and Oakdale County Cable Access Commission and the Farmington Hills and Oakdale County Cable Access Commission. The broadcast will be shown on local-access cable Channel 13 at 7:30 p.m. Tuesday, Nov. 7. The broadcast is a joint effort of the Farmington Hills and Oakdale County Cable Access Commission and the Farmington Hills and Oakdale County Cable Access Commission. The broadcast will be shown on local-access cable Channel 13 at 7:30 p.m. Tuesday, Nov. 7. The broadcast is a joint effort of the Farmington Hills and Oakdale County Cable Access Commission and the Farmington Hills and Oakdale County Cable Access Commission. The broadcast will be shown on local-access cable Channel 13 at 7:30 p.m. Tuesday, Nov. 7. The broadcast is a joint effort of the Farmington Hills and Oakdale County Cable Access Commission and the Farmington Hills and Oakdale County Cable Access Commission. The broadcast will be shown on local-access cable Channel 13 at 7:30 p.m. Tuesday, Nov. 7. The broadcast is a joint effort of the Farmington Hills and Oakdale County Cable Access Commission and the Farmington Hills and Oakdale County Cable Access Commission. The broadcast will be shown on local-access cable Channel 13 at 7:30 p.m. Tuesday, Nov. 7. The broadcast is a joint effort of the Farmington Hills and Oakdale County Cable Access Commission and the Farmington Hills and Oakdale County Cable Access Commission. The broadcast will be shown on local-access cable Channel 13 at 7:30 p.m. Tuesday, Nov. 7. The broadcast is a joint effort of the Farmington Hills and Oakdale County Cable Access Commission and the Farmington Hills and Oakdale County Cable Access Commission. The broadcast will be shown on local-access cable Channel 13 at 7:30 p.m. Tuesday, Nov. 7. The broadcast is a joint effort of the Farmington Hills and Oakdale County Cable Access Commission and the Farmington Hills and