

RALPH MANUEL ASSOCIATES • REALTORS



BLOOMFIELD HILLS RANCH

Outstanding Country French Ranch, on 1 1/4 acres near Cranbrook. Professionally landscaped with matured specimen trees, and a home with many updates and decorating done. \$595,000. WIE-52851



CUSTOM TRANSITIONAL CONTEMPORARY

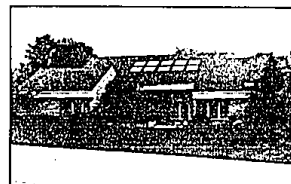
This ranch features four bedrooms, 2 1/2 baths, 2 fireplaces, and has been completely redone in the last two years. Brick patio, central air, and a cedar shake roof. \$649,900. WIN-49290



OPEN SUNDAY 1-4

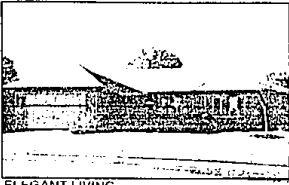
BLOOMFIELD TOWNSHIP LAKE FRONT

Breathtaking views from every level of this excellently maintained and up-dated contemporary quad. 1893 Long Pointe Dr., S. off Sq. Lake Rd. and E. of Middlebelt.



CHESTNUT RUN

Now contemporary, with dramatic vaulted ceilings, curved walls, skylights, glass bricks softened by sunny windows. Great room, and 1st floor master with luxurious bath. \$679,000 SYE-38862



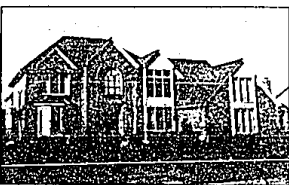
ELEGANT LIVING

Fabulous best describes this cluster home, featuring 4 bedrooms, 3 1/2 baths, library, and family room. Luxurious master suite with jacuzzi, and close to town. \$535,000. YOK-52953



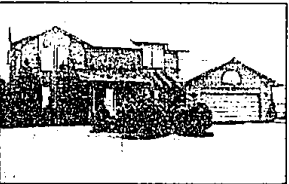
FRANKLIN VILLAGE

Country English nestled amongst 2+ wooded acres, featuring marble foyer, dining room, and St. Charles gourmet kitchen. Gorgeous first floor master suite with a marble bath. \$410,000. RID-53297



TRANSFERRER DREAM

Better than new, sixth month old executive home, with over 3800 sq. ft. of living delight. Fabulous neutral decor, 21 X 21 family room, gourmet kitchen, and more. \$342,500. OLD-55990



TIMBER EDGE

Lovely four bedroom, 2 1/2 bath, two story contemporary built in 1981. Spacious rooms, ceramic foyer, white kitchen, and large master bedroom suite with dressing area. \$259,900. SIR-53199



PEACEFUL SETTING

Spacious 3 bedroom, 2 1/2 bath ranch with excellent floor plan on large kitchen. Quiet street with private wooded lot, wonderful family neighborhood, and close to shopping. \$144,900. SKE-40716



BIRMINGHAM

In-town, 2 story aluminum sided colonial, features four bedrooms, or 3 with den, 2 baths, and up-dated kitchen with oak cabinets and appliances. All done in neutral decor. \$84,900. HUY-52737



RALPH MANUEL

ASSOCIATES • REALTORS

647-7100

1821 W. Maple

Birmingham - Bloomfield

851-6900

32961 Middlebelt

Farmington Hills - West Bloomfield

656-8900

445 S. Livernois

Rochester Hills - Sterling Heights

645-2030

908 S. Adams

Birmingham - Troy

645-0020

RALPH MANUEL ASSOCIATES

COMMERCIAL DIVISION

Mon. - Fri.

227-9610

6300 Brighton Lake Road

Brighton/Livingston

IF YOU ARE MOVING ACROSS THE CITY OR ACROSS THE COUNTRY, OUR RELOCATION DEPARTMENT CAN MAKE YOUR MOVE SMOOTH.

CALL 1-800-R-MANUEL.



BIRMINGHAM

Unique in-town contemporary with Victorian charm. Atrium soars from lower level to spectacular master bedroom suite, custom kitchen, 3 bedrooms and 3 1/2 baths. \$443,500.



WABEEK FRENCH COLONIAL

Large private corner lot, with lakeview. Featuring four bedrooms, formal dining room, den, alarm, jacuzzi, and 3 car attached garage. Bloomfield Hills Schools. \$379,000. LAE-55853



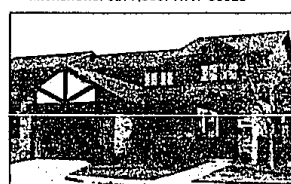
WEST BLOOMFIELD

Decorator's dream in this five bedroom multi-level contemporary home. Open floor plan, in-ground filtered and heated pool, all overlooking golf course. \$339,900. FAY-44689



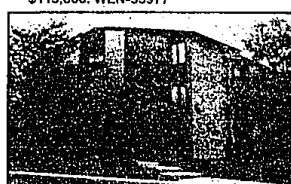
SPECTACULAR LAKE FRONT

Located on Lake Voorhe's, with large dock and sea wall. Spacious open floor plan, featuring 4 bedrooms, 3 1/2 baths, plus a family room complete with kitchenette. \$277,500. WAY-55925




DECORATOR PERFECT CONDO

This two bedroom, 2 1/2 bath townhouse includes, den, first floor laundry, full basement, and security system. Features 2256 sq. ft., each bedroom has own bath. \$115,000. WEN-55977



FARMINGTON HILLS

Beautiful two bedroom, and two bathroom condo with neutral carpeting, and a mirrored wall in dining room. Lovely window treatments, newer lights, and shelving in storage room. \$72,500.



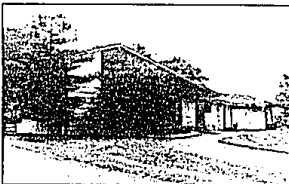
PINE CREEK RIDGE

Spectacular homesites now available in the Brighton Area!

Beautiful wooded building sites nestled among mature pine and hardwood forests, many with lakefront, stream and ravine settings. All located within the Brighton School District.

Pine Creek Lodge - 227-9610

A River Place/Abbey Development



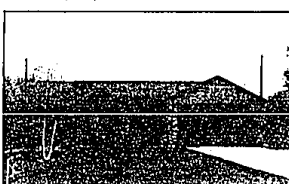
COLONY'S PARK SUB

Bright and cheerful describes this California contemporary quad. Great floor plan boasting two story living room with fireplace, family room, 4 bedrooms and 2 1/2 baths. \$185,000.



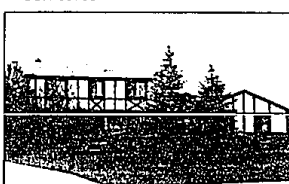
CONTEMPORARY CONDO

Three bedrooms, 2 1/2 baths, and walk-out finished lower level, with a ravine view. Attached two car garage, central air, deck, and Bloomfield Hills Schools. \$197,500. SOH-55706



GREAT ROOM RANCH

Fantastic move in condition great room ranch. Energy package for low utility bills, fireplace in great room, large custom deck, basement, and attached garage. \$114,000. 60CAM



GREAT FAMILY HOME

Well maintained Tudor with Cul-De-Sac setting. Offers four bedrooms, den, first floor laundry, and finished lower level. Common location with paths, pool and tennis. \$182,900.



SHARP NEWER CONDO

Move right into this two bedroom, 2 1/2 bath townhouse with many quality upgrades. Oak kitchen cabinets, bay window, ceramic foyer, verticals thru-out, and neutral decor. \$106,900.



TOTALLY RENOVATED!

Great Royal Oak neighborhood, boasts this three bedroom, two bath brick Cape Cod. Redone from head to toe, and ready for immediate occupancy! Won't last! \$79,900. CRS-53123

RELOCATION 1-800-R-MANUEL