

New concertmaster to play at Temple

Emmanuelle Bolsovert, concertmaster of the Detroit Symphony Orchestra, will perform at 8:30 p.m. Sunday, Nov. 26 at Birmingham Temple, 28611 W. 12 Mile, Farmington Hills.

This will be one of her first local appearances as a soloist. The Quebec-born musician bears the distinction of being one of the first female concertmasters of a major American orchestra and, at 26, one of the youngest.

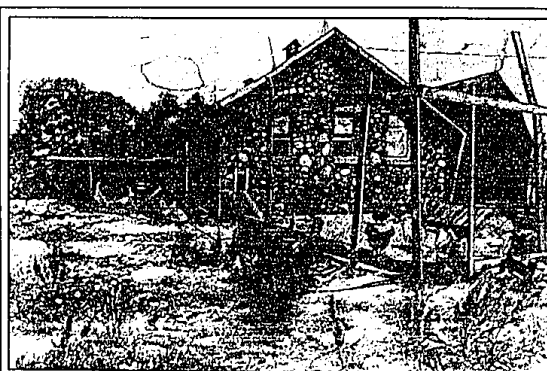
Appearing with her will be Eugene Wade, principal horn, Detroit Symphony Orchestra; Debra Fayrolan, cello, of the Detroit Symphony Orchestra; and Pauline Martin, piano. The program will include works by Franck, Ravel and Brahms.

Bolsovert will perform a Cesar Franck sonata accompanied by Martin.

Bolsovert was selected for her position with the Detroit Symphony Orchestra in a blind audition with 10 other contenders in August, 1988. Chosen as a finalist, she assumed the first chair for the first four weeks of the season on a trial basis. She subsequently won the unanimous approval of the musicians and was appointed concertmaster.

"I always wanted to play in a major orchestra in a major position," she said. She was a member of the Cleveland Symphony Orchestra for two years and was associate concertmaster with the Colorado Philharmonic. She has performed in chamber ensembles at the Marlboro Music Festival and performed as a soloist in Quebec, Toronto, Philadelphia and Colorado.

For ticket information, call 647-4632.



Drawings on display

Color pencil and watercolor drawings by Karen Anne Klein are on display at Arnold Klein Gallery, 4520 N. Woodward, Royal Oak, through Nov. 25. Pictured is

"Stone Chicken House" (Romus, Mich.), 23 by 30 inches. Gallery hours are 11 a.m. to 5:30 p.m. Tuesday-Saturday.



Emmanuelle Bolsovert

HELEN M. COBBIN,
formerly a manager with Michigan Bell, recently joined REAL INACTIVE, INC., BETTER HOMES and GARDENS/Lakes office.

Call her at...695-1122

Schweltzer & Better Homes
Real Estate, Inc.

Just West of Novi-But Close to 100,000

Eagle Pointe
Single Family Homes
SOUTH LYON

From \$105,500 (lot included)
SALES OFFICE HOURS
Weekdays 11-6
Saturday & Sunday 10-7

PH: 437-3773
196 to M Ford Rd. South
West on 10 Mile Road

Adler Homes Inc.
719 E. Grand River, Brighton Pk. 229-5722

The pulse of your community

Look what we've hidden in the woods...

Natural beauty, elegant design...undeniably the perfect setting.

- Clarkston schools and lifestyle
- Minutes from the Village of Clarkston
- Exceptionally crafted homes
- Large, heavily wooded homesites
- One mile off I-75, your quick connection to business, shopping and entertainment



I-75 N., Exit 91,
right one mile.

From \$295,000.

Call 625-1888 today!



The MANORS
of Deerwood

HOMES OF QUALITY ARE OUR SPECIALTY!



LOVELY CITY ESTATE

City of Bloomfield Hills location for this beautiful English Tudor with its private wooded grounds and lovely private pool area. Gently sloping 2 acre grounds with outdoor studio. Spacious room sizes plus open flexible design. Large interior studio also. \$1,150,000 H-43878



NEW BIRMINGHAM CONSTRUCTION

All new area of exclusive custom homes. Brick construction with quality craftsmanship. Gracious open foyer with impressive curved staircase, living room with soaring cathedral ceiling and lovely half-round windows. Large master with lavish marble bath, 3 fireplaces. \$685,000 H-54823



BLOOMFIELD VILLAGE

One of the prettiest settings in the area for this charming country French with fieldstone front. Spacious room sizes with 5 bedrooms, family room, formal dining room, library, sunroom-garden room. All in a lovely park-like setting with private pool and cabana. \$749,000 H-52081



LAKEFRONT LIVING

over 150 feet lake frontage, nearly 2 beautiful acres with Birmingham schools. Most condition like-new contemporary interior. New kitchen and baths and more. Updating must be seen. \$549,000 H-55183



ONE OWNER PRIDE

Beautifully maintained family home and grounds. Quality features include family room with oak paneling, built-in bookcases and French doors. Large formal living room with fireplace. Wakefield area. \$340,000 H-47721



SPECTACULAR CONTEMPORARY

Pine Lake frontage for this spacious soft contemporary completely renovated in 1983. Extra large master suite with private deck overlooking lake. Great interior design with lots of windows and doorways. Premium 4 car garage. Set back from the road for privacy. Gracious lakeside living at its best. Bloomfield Hills schools. \$799,000 H-51943

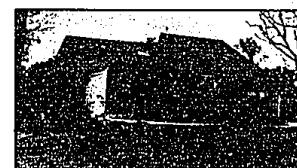


OPEN SUNDAY 1-4

4920 Elmgate, Orchard Lake
(N. of Pontiac Tr. & W. of Orchard Lake)

GOLF COURSE SETTING

Custom contemporary backing to Orchard Lake Country Club golf course. Two-story elegant entry, great room, large loft area, luxurious master suite with jacuzzi...all in a beautiful wooded setting. \$525,000 H-43528



IMMEDIATE OCCUPANCY

Great location for this beautiful contemporary with no search living space. Imported marble foyer and hallway. Open kitchen with Bob Zare and Jans-Air. Plush master bedroom and bath with jacuzzi. \$239,000 H-46285



Hannett, Inc. Realtors

646-6200

101 W. Maple St. Birmingham, AL 35202