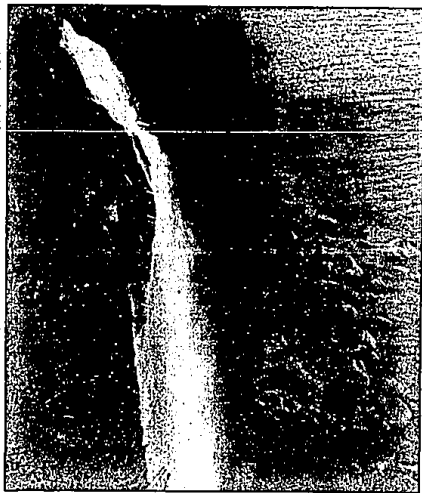


Let your film do a slow blur



A long shutter speed at Scotland's Meall Falls produced an unusual and dramatic waterfall photograph for Monte Nagler resulting in a misty, dreaming feeling.

Long shutter speeds can produce striking photographs of things in motion and give you visual effects not obtainable with faster shutter speeds.

Shooting a waterfall, for example, at a fast speed to "freeze" the water in mid air is fine. But imagine the dramatic effect you can achieve by using a slow shutter speed. The water will appear as a blur, with an almost misty, dreamy mood captured on your film.

Pictures using slow shutter speeds are easy to obtain. You'll need a



photography
Monte Nagler

proper exposure and delightful results. Even try removing your camera from your tripod and hand-hold it

during a long exposure to deliberately add motion to your picture. The outcome may surprise you.
© 1990. Monte Nagler

Short shots

The Saginaw Art Museum is sponsoring All Area Photo 1990, a juried-exhibit with more than \$900 in prizes. Competition is open to artists 18 and over. Entries must be hand delivered to the Museum 10 a.m. to 5 p.m. March 9-11. All photographic processes are acceptable.

The award-winning works will be on display during April. For information, call the Museum 517 754-2491.

Howard Bond has two workshops upcoming. A weekend workshop on clarification of the zone system and other topics involved in exposing and developing black and white film will be held March 24-25.

A second workshop, "Refinements in Black and White Printing" will be held April 7-8 and repeated on April 21-22. For registration and information, call 665-6597.

sturdy tripod and cable release to do the job. Compose, focus and adjust to the smallest aperture the lens will allow so that the meter will call for as long a shutter speed as possible. Water will begin to show the effects of motion at speeds of 1/30 second, although even slower speeds are more desirable.

If your meter indicates too fast a shutter speed even at small aperture, try a slower speed film or attach a polarizer or neutral density filter to the front of the lens. The density of these filters will reduce the amount of light reaching the film, necessitating a much slower speed to attain correct exposure.

Most likely, you'll have to set your shutter speed dial on "B" where the shutter remains open as long as you depress the cable release. Because your camera's meter may not function in the "B" setting, just determine an exposure combination with a wide aperture and extrapolate to the required shutter speed at the small lens opening.

Don't forget other exciting picture possibilities that will put motion in your photographs. Automobile headlights and taillights make fascinating patterns at night when your camera is left on "B" for an extended time. Just use a medium lens opening for

briefly speaking

Scarab exhibition
The Scarab Club Gallery will open its annual silver medal all-media art exhibition featuring selected works from various Michigan-Ontario artists. The juried exhibition opens Sunday, March 4 and runs through the 29th. Gallery hours are weekdays, 10 a.m. to 4 p.m. and weekends, 2-5 p.m. There will be works for sale and admission. Parking is free. The gallery is at 217 Farnsworth, Detroit, behind the Detroit Institute of Arts.

Signs of spring
Matthaei Botanical Gardens docents will lead a trail walk at 2 p.m. Sunday, March 4, the focus of which will be the secret signs of spring. Participants are urged to dress warmly and wear warm footwear. The walk will last approximately

two hours. Meet docents at the steps to the building. Matthaei gardens is at 1800 N. Dixboro Road, Ann Arbor, half mile south of the Plymouth Road intersection.

Daily arts and crafts
Fifty artists and craftspeople from all sectors of the Midwest will participate in the arts and crafts fair Friday and Saturday, March 9-10 at Domino's Farms in Ann Arbor.

Craft Gallery
Craft Gallery's first show of the season will be Sunday featuring 65 displays of country folk art, Victorian crafts and early Americana. The event is at Roma's of Garden City, 32550 Cherry Hill, between Merriam and Venoy. Hours are 10 a.m. to 4 p.m. There is a \$2 admission charge.

save energy

Use your dishwasher only when it is full. Turn it off when the final wash cycle is completed and open the door. Your dishes will air-dry. It's best to use your dishwasher in the spot of the evening.

BRIGHTON CONDOMINIUMS! BRIGHTON CONDOMINIUMS!



When you contemplate moving, you look for the perfect place. Chances are, you'll find everything you're looking for at Forest Hills of Brighton

Developed by Forest Hills Association

Brighton Condominiums

MODEL OPEN DAILY 1 to 5 PM (CLOSED FRIDAYS)

Forest Hills of Brighton is a luxury complex of two, three and four unit buildings with all the features you're sure to want: Private front entrance. Spacious rooms with studio ceilings and wall-to-wall carpeting. The well designed kitchens have custom wood cabinets, and no wax vinyl laundry area on the first floor. In short, you'll have all the advantages of a fine home with none of the maintenance worries.

OUR LUXURY HOMES FEATURES:

- Lakeview Settings
- Wooded Ravines
- Fond
- Natural Beauty
- Excellent access to US-23 & I-96
- All City Utilities
- Brighton Schools
- Attached Garages
- Lakeview Settings
- No Outside Maintenance
- Underground Sprinkling System
- Approx. 1,155 sq. ft. Spacious Contemporary Floor Plans
- Balcony
- Air Conditioning
- Gas Heat
- Carpeting
- Low Maintenance Fees
- In Brighton City Limits
- Walkout Basements
- Professional Landscaping
- Low Maintenance

Ranches and Townhouses starting at \$86,900

49 UNITS
Now Under Construction
Immediate Occupancy!



Ask for
DAN LEABU III
7600 Grand River, Brighton

OFFICE: (313) 229-7838
MODEL (1-5 pm) (313) 229-3375
EVENING RESIDENCE: (313) 227-9223



FIND

through classified

Whatever you want to find, from a lost dog to a better job, you can find in classified. Read classified daily.

Observer & Eccentric classified ads

644-1070 Oakland County
591-0900 Wayne County

852-3222 Rochester-Avon Twp.

Use your VISA or MASTERCARD

Chamberlain REALTORS

Serving the area's finest communities since 1918



UPPER LONG LAKE ACCESS • Best buy of the decade! Ranch style home on large terraced lot. 3 bed rooms, family room. \$117,777 (R252) 557-6700



FARMINGTON HILLS-Rolling Acres • Spacious and lovely 4 bedroom colonial. Formal dining room, huge kitchen, family room with brick fireplace, tile entrance garage. \$174,900 (V312) 851-4400

THE ULTIMATE CONDO • Professionally decorated end unit in CHANTICLEER. Three full baths, finished lower level with additional bedroom/office, wet bar and beveled glass doors. Buy or lease. \$189,500 (C295) 557-6700

KIAMBERLY SUB-FARMINGTON HILLS • Walk to elementary school, swim and tennis club. Four bedroom tri-level. Great country kitchen, heated Florida room, and workshop. GREAT FIND! \$153,777 (PL303) 557-6700

GREENPOINTE CONDO • Exquisite ranch condo with exceptional neutral decor, 1st floor laundry, three large bedrooms and a walkout lower level with private decking. \$144,777 (D732) 557-6700



BEVERLY HILLS • Lovely ranch with hardwood floors, skylight, three full baths, two fireplaces, finished rec room and Florida room. \$164,900 (N181) 557-6700



SOUTHFIELD • Well maintained and tastefully decorated, first floor condo. Heat is included in the \$120.00 monthly association fee. Carpet, \$55,900 (S-253) 647-6400

SOUTHFIELD-REDUCED! Motivated seller wants you to see this attractive four bedroom home with 2 1/2 baths, family room/fireplace, 2 1/2 car garage. GREAT EXECUTIVE HOME. \$124,499 (L1245) 557-6700

SOUTHFIELD'S FINEST-12 MILE & LAHSER • Deluxe 4 bedroom colonial offering the finest of interior decor. Central air, fireplace and attached garage accent this home. \$192,777 (L145) 557-6700

LATHRUP VILLAGE TUDOR • 4 bedroom home situated on a double lot. A great kitchen, charming breakfast nook, dining room, 2 fireplaces, 2 full plus 1 half bath. Finished basement. A must to see! \$129,900 (C173) 547-2000

BIRMINGHAM 641-6400	ROYAL OAK 575-3000	ROCHESTER 651-1100	BLOOMFIELD 646-6888
SOUTHFIELD/LATHRUP 557-6700	TROY 641-1660	WEST BLOOMFIELD 851-1100	

For a career in real estate contact any of the offices above