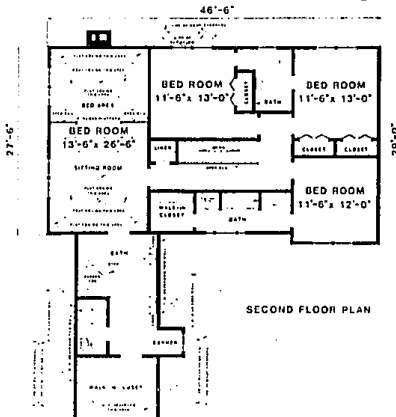
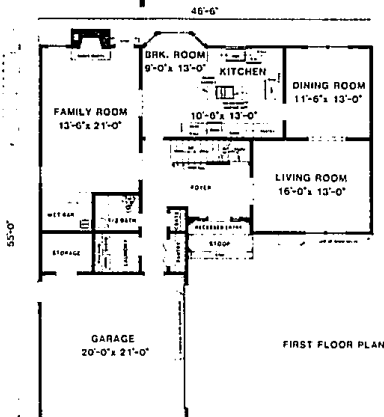


# Plan provides for bedroom suite



W.D. Farmer plan 3942 features over 700 square feet of living space in the master bedroom suite. The suite includes a full sitting area, bed area, private bath, tray ceilings and a large walk-in closet. There also are three other bedrooms on the second floor. Two of them share a connecting bath, while the other has a private bath. The first floor features separate rooms for everything: a formal living and dining room, a large kitchen with island surface unit and bay window breakfast room, a half bath, separate laundry, extra closets and a wet bar in the family room. The traditional style is appointed by a soaring roof design, cantilevered bedroom, dormer windows and recessed entry. The home is well suited to a narrow lot. This is a computer generated plan. It includes 3,844 square feet of heated area. All W.D. Farmer plans include special construction details for energy efficiency and area drawn to meet FHA and VA requirements. For more information, write to W.D. Farmer, P.O. Box 450025, Atlanta, GA 30345.

## Skylights: pros and cons

**Continued from Page 1**

"The real fun part is it can be show covered outside and you can sit in here and it's just lovely." Skylights are especially popular in family rooms, bedrooms and increasingly in kitchens and interior bathroom suites that have no windows.

"I think they've added zest to homes," said Frank Rodriguez, who is building a house in White Lake Township with six skylights — one in each of two bedrooms, two in the great room, one in the kitchen and one in the master bathroom. The only drawback to skylights that occurred to Rodriguez — keeping them clean.

**MEADOWRIDGE CONDOMINIUMS**  
HOMES IN THE HEART OF FARMINGTON HILLS

Models Now Open • Pond Sites Available

**\$144,900**

- Best Value • Fully Decorated Models • Ranch or Townhouse
- Full Basement/Walkouts • Central Air Conditioning
- Insulated Wood Windows • 2 Full Baths • 2 or 3 Bedrooms
- 1st Floor Laundry • Fireplace • 2 Car Att. Garage • Private Entrance

**471-6855**

Daily and Sunday 1-6 P.M. • Closed Thursday

**Valley Pointe**  
condominiums

**PRIME CANTON LOCATION**  
With Large Natural Park

- 1 Floor, 2 Bedroom, 2 Bath Models
- 3 Floor Plans
- Private Entrances
- GE Appliances
- Cathedral Ceilings
- Carport

From **\$68,500**  
OPEN 12-5 Daily  
**981-6550** (Closed Thursday)  
SALES BY CENTURY 21, HARTFORD SOUTH, INC.

**LAST 41 BUILDER'S MODELS**

**Northville Colony Estates**  
Fred E. Greenman Builder, Inc.

**All Models Fully Carpeted with Window Treatments Fully Landscaped with Sprinkler Systems**

**Priced from \$165,000 to \$175,000**

**Models Located On:**  
White Haven Drive, South side of 6 Mile Rd. and 1/2 Mile West of Haggerty Rd., Northville 1 p.m. to 5 p.m.  
**MODELS OPEN DAILY AND SUNDAY** (Closed Thurs.)  
**MODEL PHONE 420-2500**  
Mornings or Evenings — Call Braun Realty 453-2653

**Arbor Village**  
CONDOMINIUM

**Phase V Now Open**

**Priced from \$77,900**

**RANCH and TOWNHOUSE STYLES**  
MODEL HOURS: Daily 9-6 P.M.  
PHONE: 397-8080

**Affordable-Quality-Value**

**North Pointe**  
of Whitmore Lake

**BI-LEVEL • COLONIAL • RANCH • CAPE-COD**

From **\$95,500** Include: Lot with sewer, 2x6 exterior walls, 2 car garage, 3 bedrooms, basement (unfinished).

**SALES OFFICE OPEN**  
Daily 11-4; closed Thursday  
**449-0022**

**Adler**  
HOME & TREE  
719 E. Grand River, Brighton, Ph. 229-5722

**EXPLORE YOUR OPTIONS IN PLYMOUTH**

**SPECIAL PRICING ON HOMES THAT ARE AVAILABLE FOR IMMEDIATE OCCUPANCY**

Luxurious quality built homes on spacious natural lots make Woodmore North one of suburban Detroit's most desirable subdivisions. Numerous dramatic floor plans, vast kitchens and master bedroom suites and more. Come share in the excitement. Visit our 3 decorated models today.

Completed Homes start at \$280,000's  
Phone 454-1519  
Homesites are also available starting at \$59,900

**WEEKDAYS: 12-3:30 P.M. Daily**  
**Open Thursdays**  
Closed Thursday

**THE SELECTIVE GROUP**  
Plymouth, MI 48150

**DETACHED 1 STORY CONDO HOMES**

**MOVE IN FOR JUST \$89,900\***

**& SAY GOODBYE TO MOWERS, RAKES & SHOVELS.**

Combine year-round, maintenance-free living with the privacy of a single family residence. Visit Emerald Pointe, Westland's unique, adult-oriented condominium community featuring detached, single-story homes. Phase II lots are now available...2 new models can now be selected...yet move-in prices still begin at only \$89,900. Say hello to over 50 friendly neighbors who call Emerald Pointe their home...and say goodbye to mowers, rakes & shovels...forever.

- 3 Bedrooms
- 2 Full Baths
- 2 Car Attached Garage
- Numerous Standard Features

**Weekdays: 9-5**  
**Open Thursdays**  
**Weekends: 12-4**

**451-1030**

**Emerald Pointe**

**Eaton Estates**

**Luxury Ranch and 1 1/2 Story Condominiums for the Discriminating Buyer**

Discover Plymouth's luxury condominiums in a beautiful country setting!

- Two Ranch Models, 2045 & 2415 Sq. Ft. Plus Walkout, Lower Level with Fireplace.
- 1 1/2 Story, 2045 Sq. Ft. Plus Walkout, Lower Level with Fireplace.
- Master Bath with Private Tub, Separate Storage Closets.
- Great Room with Cathedral Ceilings, Decks & Fireplace.
- Walk-in Closets, Colorful Spacious Master Bedroom Suites.
- Gourmet Kitchens.

From \$229,900 Immediate Occupancy Available in Selected Units

**EATON ASSOCIATES**  
**455-4220**  
Model Hours: Mon-Sat. 1-6 p.m. • Closed Thursday