

upcoming  
things to do



Nancy Gurwin stars in "Once Upon a Mattress," a musical based on the fairy tale about a princess and a pea, opening Saturday, April 21, at the Jewish Community Center in West Bloomfield. For ticket information call 661-1000.

Continued from Page 7

● On stage

The Jewish Community Center, with Nancy Gurwin Productions, announces the opening of the Mary Rodgers and Marshall Barer musical, "Once Upon a Mattress," at 8 p.m. Saturday, April 21, in the Aaron DeJoy Studio Theatre at the JCC in West Bloomfield. "Once Upon a Mattress" also will be presented on the following dates: Saturday, April 21, 8 p.m.; Sunday, April 22, 7 p.m.; Thursday, April 26, 7 p.m.; Saturday, April 28, 9 p.m.; Sunday, April 29, 2 and 7 p.m. Tickets are \$3.50, general admission; group rates of 20 or more, \$7; senior citizens, \$8; students, \$5. For ticket information, call 661-1000 or Ticketmaster (Hudson's, Harmony House and Sound Warehouse). Call for TIX, 645-6666.

● Production seminar

Comedian, writer and producer Mike Binder, formerly of Birmingham, will serve as keynote speaker at the Detroit Producers Association's 12th annual Production Seminar on Saturday, April 21, at the Troy Hilton. Binder will discuss his move from the Detroit comedy scene to his recent success in Hollywood as screenwriter and co-producer of the current film "Coupe De Ville," and as writer, co-producer and co-star of the soon-to-be-released film, "Northern Lights." Also featured at the daylong seminar on film and television production is Al Jean, who was raised in Farmington Hills. Jean is co-writer of the Fox Network comedy hit "The Simpsons." Jean will discuss tricks of the trade writing comedy for television. Doors open at 7:30 a.m. at the DPA Registration Desk at the Troy Hilton, followed by the 9 a.m. opening session. Pre-registration is necessary. For more information, contact Joanne Goldberg at 737-4240.

● Play opening

"Serenading Louie" opens at 8

p.m. Thursday, April 19, at the Smith Theatre on the Orchard Ridge Campus of Oakland Community College in Farmington Hills. The play deals with two modern, suburban couples who must learn to deal with new strains and pressures that have come into their lives. Performances are Friday-Saturday, April 20-21 and 27-28. Tickets are \$6, \$10 at the door. An optional dinner theater package is available for the April 20 performance. More information about the production may be obtained by phoning 471-7700.

● Coffee house

Possum Corner Coffee House series presents Anne Hills, singer-songwriter, at 8 p.m. Saturday, April 21, at Sashabaw United Presbyterian Church in Clarkston. Tickets are \$7, adults; \$5, seniors over 60; \$5, children 6-15; children 5 years old, free. Tickets are available at all Ticketmaster outlets and the Book Place in Lake Orion. For information call 625-1227.

● In concert

G. Kevin Dewey conducts the Oakland Community College Chorus and the Renaissance Voices in "Do You Hear the People Sing," a concert with the Harrison High School Orchestra under the direction of Mark Phillips, at 8 p.m. Tuesday, April 24, at the Harrison High School Auditorium in Farmington Hills. Admission is \$3.

● Bonstelle Theatre

More than 30 students from Detroit and 18 other Michigan cities are appearing in Tom Stoppard's comedy "On the Razzle" at the Bonstelle Theatre in Detroit. Performances begin at 8 p.m. Friday-Saturday and 2 p.m. Sunday. For further information and tickets, call the Bonstelle Theatre box office at 577-2960. Area students participating in

Please turn to Page 9

Concentration the key  
to role as blind woman

Continued from Page 7

accidentally, and when she did the "Applause" number there was no reaction from the audience. It turned out, "They were waiting for the lights to crack. The audience was scared to death," she said.

THE MUSICAL brought Franklin her first acclaim. "That was the show that made me known, as far as theater critics were concerned. The rest of the world didn't give a flying leap," she said philosophically.

She left the show twice, once to do "A Thousand Clowns" and then to do another show that turned out to be a Broadway flop. After two years with "Applause," she went on to do "Sugar" and "No, No, Nanette."

Then, "I met this guy." He was a drama teacher who was working on "Nanette." "I was going to have this passionate affair with him." She went to visit him in Phoenix, and when the passion burned out, went on to California, where she met TV producer Norman Lear.

With Lear, "It was love at first sight." He was working on a new TV series, and sent her to talk to its creator about a part, as Ann Romano, the mother of two teenager daughters, in "One Day at a Time." "I got it in 15 minutes."

She did the pilot with Mackenzie Phillips as her daughter. "I'm too young to be her mother," Franklin said, but the comedy still worked. "We both have a big mouth."

VALERIE BERTINELLI joined the show in the second pilot. "All Norman Lear's shows have to do with his family. All in the 'Family' was about his father. 'Maude' was about his wife. 'One

Day at a Time' was about his two daughters," she said.

Today, Franklin's best friend is Shelley Fabares, who played her bitchy partner Francine on the show. Franklin and her husband, producer Marvin Minoff, have been married 10 years. Minoff and Fabares' husband, actor Mike Farrell, have a production company together.

Tony Musante, who plays the menacing killer in the Birmingham Theatre production of "Wait Until Dark," was recommended for the part by Franklin, who costarred with him recently in New York in "Frankie and Johnny in the Chair de Lune."

"It's a two-character play that's being made into a movie," Franklin said about "Frankie and Johnny." She appeared in the show for four months before she left the cast and spent two months doing "Annie Get Your Gun," which broke box office records at the Bucks County Theatre.

"It was a great six months," Franklin said. I used every part of myself professionally."

At home, Franklin likes to walk an hour each day, and she and her husband take turns walking the dog. "We have a yellow lab. We take him to the mountains every morning," she said. She also has an exercise trainer come in twice a week, and has an exercise tape on days where the weather isn't suitable for walking.

BECAUSE OF her interest in tap dancing, Franklin made a tape, "Let's Tap with Bonnie Franklin." It offers three routines for beginners. "A little girl came up to me in New York, and said, 'You're Bonnie Franklin. I use your tape.' And she started to do a routine."



Pearl's  
Garden

Serving the Finest in  
Chinese & American Cuisine

Luncheons • Dinners • Carry Out Orders  
Szechuan and Mandarin  
Open 7 days a Week

Mon.-Thurs. 11 AM-10 PM • Friday 11 AM-11 PM  
Sat. 12-11 PM • Sunday 12-10 PM

469 S. Woodward • Birmingham  
644-2913

5 GOOD REASONS  
WHY YOU SHOULD EAT AT  
TRINI & CARMENS

1. Serving this area for 25 years. We are now serving the children and grandchildren of our earliest customers.
2. Knowledgeable people who know Mexican food eat here.
3. We were the first with our own style Nacho - and copied by many.
4. Independent and family owned.
5. We have recently remodeled and expanded and added more items to our menu.

TRINI & CARMENS



ANN ARBOR  
50 N. Territorial  
665-3967

WATERFORD  
1715 Telegraph  
332-6851

Two-for-One Movie Offer

Have you visited Showcase Cinemas where moviegoing becomes an event? Your choice of 14 major motion pictures, enjoyed in exclusive comfort designed rocking chair lounge seats, State of the art Dolby Stereo Sound System and 70mm Projection. Acres of Free Lighted Parking. Courteous staff, and a Spacious Lobby and Art Gallery, all for the ultimate in cinema-going enjoyment. We would like to offer a Special opportunity to you and a friend to enjoy your choice of film at the new multiplex, as our guests.

Simply complete the attached coupon which will admit you and a friend to the movie of your choice for the price of one admission!

Two-for-One  
Movie Offer  
at  
**SHOWCASE  
CINEMAS  
AUBURN HILLS**  
2150 North Opdyke Road  
Between Walton Boulevard & University Drive 313-373-2660

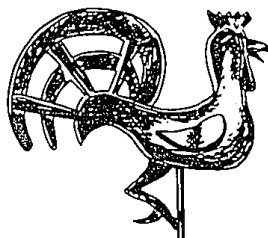
THIS CERTIFICATE will be accepted in lieu of payment for ONE ADMISSION when accompanied by ONE PAID ADMISSION. Valid only when filled out below. Limit one certificate per couple. Not valid with other cinema promotions. Subject to seating availability. Present this certificate at the Box Office before purchasing cinema tickets. OFFER VALID APRIL 19 - APRIL 29, 1990

Name \_\_\_\_\_  
Address \_\_\_\_\_  
City \_\_\_\_\_  
Film Choice \_\_\_\_\_

Showcase Cinemas Auburn Hills  
2150 North Opdyke Road, Between Walton Boulevard & University Drive  
On the site of the former Blue Sky Drive-In 24 Hour Phone 313-373-2660  
A National Amusements Theatre

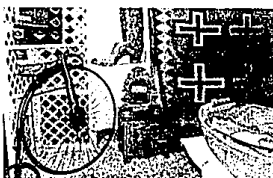
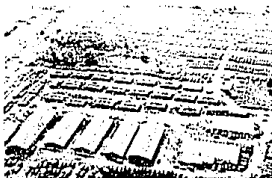
Observer & Eccentric®  
CLASSIFIED  
ADVERTISING

644-1070 Oakland County  
591-0900 Wayne County  
852-3222 Rochester / Avon



Ann Arbor  
Antiques Market

5055 Ann Arbor-Saline Road., Ann Arbor, Michigan  
OUR 22nd SEASON

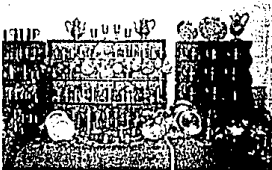
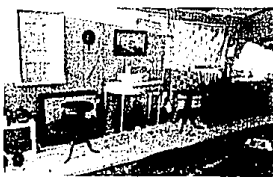
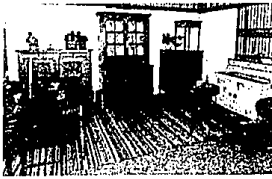


SUNDAY  
APRIL  
22

5:00am - 4:00pm  
Third Sunday of the Month  
(except November)

Over 350 Dealers in Quality  
Antiques & Select Collectibles  
All Under Cover  
All items guaranteed as  
represented.  
Locator service for  
specialties and dealers;  
on site delivery and  
shipping service.

FREE PARKING  
ADMISSION \$3.00



SEE CLASSIFICATION 702 ANTIQUES

For further information contact  
M. Brusher, Manager  
P.O. Box 1512, Ann Arbor, Michigan 48106