

# Designs on a new garden

Have you ever wanted to dig up all your flower beds and start fresh with new designs and plantings? Well, Gale Weisman did just that and the results are outstanding. Weisman, a Farmington Hills resident is an advanced master gardener and she designed everything.

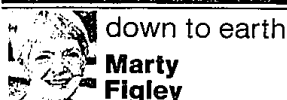
The major reasons for changing the area was to eliminate lawn maintenance and since the children are grown, there is no longer a need for a play area. The boundary of the yard, where the original perennial beds were located, also contained barrier trees such as evergreens, shrubs and large deciduous trees that, as the years passed, shaded the gardens.

Now along with the trees that were retained, shade loving perennials have been planted — a perfect solution. A small 20-year old Japanese maple (Acer Palmatum Dissectum) adds a bright touch among all the green foliage.

To accomplish the goal, the sod was removed, layered turf-side down to decompose into rich soil and used to create a raised rock garden. Top soil was incorporated into this bed. Brick was laid flush to the ground around the perimeter of each garden for definition and to help discourage lawn grass from encroaching into the new areas. The raised garden contains many miniature and Alpine plants.

The day I visited, the Fringe tree (Chionanthus virginicus), seen from a large living room window, was at its peak. Since it requires an acid soil, plants with like needs are grouped here. Azaleas, rhododendrons, pieris japonica, and dogwood live in harmony. Dianthus (pinks), although they don't necessarily need acid soil, like their spot and add a pretty pink accent when the shrubs have stopped blooming; then daylilies begin their show so that color is present throughout the season.

THE CENTER bed incorporates vegetables, eggplant, tomatoes, basil, perennial flowers and various grasses, which are beautiful when mixed in this manner. The grasses that are invasive are planted in large plastic pots which were purchased at a nursery and sunk in the ground. Sweet vernal, Blue Lyme, ribbon and sweet grasses are included in this list, while non-invasive ones such as Big Blue Stem and Bulbous Oat Grass, which has creamy blades with a green center stripe, are there as many others. As you can tell, Weisman likes the rare and



down to earth

Marty Figley

unusual and makes an effort to locate it.

In a newly composted bed, when the sod was turned, plants were positioned between pieces of sod and all of them took — quite an accomplishment. In this garden native plants, penstemon, monkey flower, cardinal flowers, columbine and others are growing quite happily. A herbicide was applied 10 days before the planting for weed control.

Violets are given a bed of their own as are a group of alliums and a collection of gray plants and artemisias. A tiny water pond has been installed near the patio so the sound of trickling water adds a restful melody while the family relaxes. Two water-loving plants, a variegated sweet flag and an umbrella plant (Cyperus alternifolius), are set on raised pots in the water so that the soil remains constantly moist. They will be taken indoors in the fall.

Weisman's friendship garden (plants received from friends) is crowded with iris and unusual specimens such as yellow cordylis lutea, white fillipendula hexapetala and amsonia, which has pale blue star flowers.

One of her favorite plants is lady's mantle which has green flowers and beautiful foliage all season. She has regular and variegated ones. An unusual ground cover is mazus reptans blooming with charming lavender-blue little faces.

Weisman, teaches classes in perennials and herbs at the Farmington Community Center and lectures through the Cooperative Extension Services of Oakland County. You may hear her voice on the Hot-Line when you call with your garden questions and you can be sure that you will receive accurate information from this "green thumb".



SHARON LEMIEUX/staff photographer

Now that she's redesigned her yard, Gale Weisman can, at least occasionally, relax and enjoy it.

## TOTAL CLOSING COSTS

**\$275.00** COMPLETE

- NO ORIG. FEE
- NO DISCOUNT FEE
- NO TITLE FEE
- NO D.P.S. FEE
- NO SURVEY FEE
- NO UNDERWRITING FEE
- NO CLOSING FEE
- NO HIDDEN FEES

ABOVE DOES NOT INCLUDE:  
DOWN PAYMENT • PREPAIDS  
CONFORMING 15 & 30 YEAR FIXED RATE LOANS ONLY

ICM MORTGAGE CORPORATION

Call 647-9330 ASK FOR KATRINA



## FREE MARKET ANALYSIS

**COMMISSIONS  
NEGOTIABLE  
532-2700**

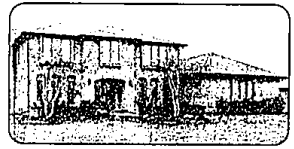
Call The Right Agent

Barb Hanna Rich Svatora Jim Graves  
26708 Grand River • Redford, Michigan 48240



## The Prudential Great Lakes Realty

## Come join us at the Mini Grand Prix at the Prudential Town Center



**FIRST CLASS!** Accented by stained glass doors, this Contemporary Colonial set on a professionally landscaped lot. Features expansive family room, library, 4 bedrooms, fireplace, Florida room, wet bar and chef's delight kitchen with breakfast nook. \$269,900 626-9100 02-B-4238



**SERENITY!** Set on nicely landscaped corner lot this sensational Tri-level is located in area of high priced homes. Highlights 4 bedrooms, fireplace in family room, formal dining room, lovely living room, breakfast nook and central air. \$169,900 626-9100 02-B-4336



**TOTAL PRIVACY!** Custom built Ranch is surrounded by trees. Comes complete with 3 bedrooms, generous living room with fireplace, formal dining room, quiet library and kitchen with breakfast nook. Includes 3 car garage and central air. \$169,900 626-9100 02-B-4530



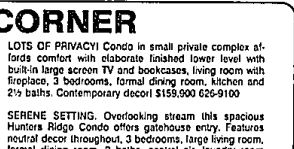
**GREAT FLOOR PLAN!** Spacious pillared Colonial is freshly painted. Highlights 2 fireplaces, dramatic 2 story foyer, in-law suite, expansive family room, formal dining room, lovely living room, 4 bedrooms and 3 baths. Neutral decor! Lease \$1,500/month or \$164,900 626-9100 02-B-4237



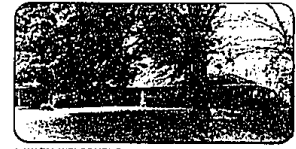
**ENJOY SWIMMING IN THE ENCLOSED INGROUND POOL!** Originally owned Ranch accents hardwood floors, Florida room adjoining pool, living room with fireplace, finished lower level, 3 bedrooms, 1.5 baths and formal dining room. Beautiful tree lined neighborhood near everything! \$129,900 626-9100 02-B-4496



**BEAUTIFUL VIEWS FROM THE PRIVACY OF YOUR DECK!** Wonderful 1st floor condo accents living room with marble fireplace, updated kitchen with walk-in pantry, master bedroom with bath and walk-in closet and finished walk-out basement. \$129,900 626-9100



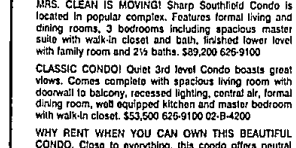
**SERENE SETTING.** Overlooking stream this spacious Hunters Ridge Condo offers gatehouse entry. Features neutral decor throughout, 3 bedrooms, large living room, formal dining room, 2 baths, central air, laundry room and 2-car garage. \$114,900 626-9100 02-B-4062



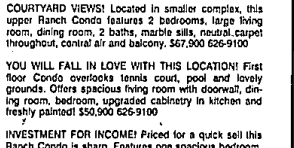
**A WARM WELCOME!** Sprawling brick Ranch on parklike hill acre is packed with extras. Boasts vestibule with slate floor, great room with recessed lights and accented with Belgian oak stone, 2 fireplaces including one in large master suite, built-ins and rec room. \$155,000 626-9100 02-B-4333



**WARM AND WELCOME!** Spacious Contemporary brick Ranch sets on oversized lot. Boasts elegant living room with fireplace, formal dining room, 3 bedrooms, breakfast nook and 2 baths. Enjoy summer evenings on the huge deck. \$129,900 626-9100 02-B-4241



**ALMOST NEW AND IN EXCELLENT CONDITION.** Two bedroom Condo in FARMINGTON HILLS features private location, great room with fireplace, formal dining room, all appliance kitchen with snack bar. Complete with 2 car garage, central air and patio. \$110,900 626-9100



**COURTYARD VIEWS!** Located in smaller complex, this upper Ranch Condo features 2 bedrooms, large living room, dining room, 2 baths, marble sink, neutral carpet throughout, central air and balcony. \$67,900 626-9100



**OPEN SUN, 1-4, 30640 Grosvenor, Srd. S. of 13, W. of Southfield.** Birmingham schools come with this home featuring living and dining rooms with hardwood floors, common fireplace and full wall windows, 3 bedrooms, master with walk-in closet and bath with skylights and never kitchen. \$129,900 626-9100



**HOP, SKIP AND JUMP TO SCHOOLS!** Clean and updated Colonial is nestled on large corner lot. Features 4 bedrooms, roomy living room, formal dining room, updated kitchen and baths, finished basement and patio. Many improvements! \$114,900 626-9100 02-B-4242



**OPEN FLOOR PLAN!** Popular Camelot Courts Ranch home is filled with extras. Features beamed cathedral ceiling in family room with natural fireplace, doorway to large parklike yard, kitchen with snack bar and built-ins, master bedroom with walk-in closet and central air. \$114,900 626-9100 02-B-4479



**MECHANICS DREAM 4 1/2 CAR GARAGE!** Farmington Hills Ranch comes complete with 3 bedrooms, generous living room, delightful kitchen with breakfast nook, neutral decor, central air, patio and porch. Closets galore! \$109,900 626-9100 02-B-4304



**QUIET TREE LINED STREET!** Sharp Quad in Cranbrook Village is close to shopping. Set on professionally landscaped fenced lot this home offers many updates. Presents 4 bedrooms, spacious family room, formal dining room, 2 baths and finished rec room. Relax on inviting porch. \$95,900 626-9100 02-B-4478

## The Prudential Great Lakes Realty

BIRMINGHAM-BLOOMFIELD  
Phyllis Woodworth  
Call Leon Lakot

646-6000

ROCHESTER  
Linda Wilson (husb)  
Call 647-9330

651-8850

FRANKLIN-FARMINGTON  
Diane Barmann (husb)  
Call 647-9330

626-9100

RELOCATION OFFICE  
800-521-4264

WEST-BLOOMFIELD  
Linda Woodworth  
Call 647-9330

851-8100

TROY  
Patricia (husb)  
Call 647-9330

680-8900

OPEN MONDAY-FRIDAY 9 a.m.-9 p.m. SATURDAY 9 a.m.-5 p.m. OPEN SUNDAYS