

Community Corner

This week's question:
What do you think about the proposed gas tax increase?

We asked this question at the Crossroads Shopping Center in Farmington.



"I have very personal angry feelings about the price of gas. I don't like it. I like the taxing of cigarettes, beer. That's a luxury. Gas isn't."
— Elaine Medwed
West Bloomfield



"With the situation in the Persian Gulf, we all have to sacrifice. Somehow we have to pay for the (federal) deficit and military actions."
— Tracy White
White Lake



"I don't see any other way of the deficit, the war."
— JoMarie Kelly
Farmington Hills



"I dislike it like everybody else. I don't think any of it is necessary. The deficit will never go away."
— Bruce Altar
Wolverine Lake



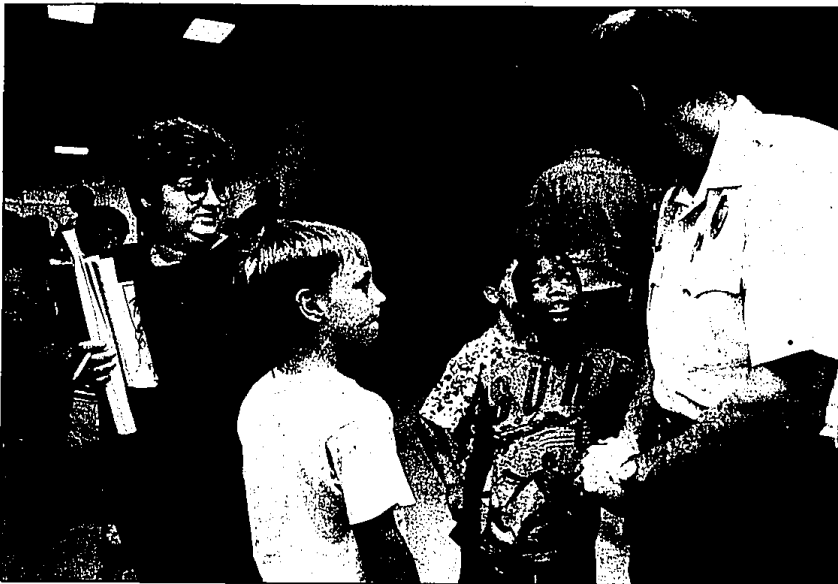
"It hits people like us more than anybody else — the average income people."
— Verne Wagoner
Farmington Hills



"If it hadn't been for this Arab thing (Persian Gulf crisis)... Now we'll be paying a 35-cent increase. This is a bad time."
— Virginia Wagoner
Farmington Hills

Safety talk

Following a school assembly on fire safety, Farmington Hills firefighter Mike Garr fields questions from Wood Creek Elementary third graders Rontez Dargot (right) and Ross Patterson (left), as teacher Vicki Shaw looks on. The Hills is hosting its annual Fire Department Open House for kids and families this Sunday from noon to 4 p.m. at fire headquarters on Drake south of 13 Mile.



SHARON LAMIEU/staff photographer

Help for diabetics

Help for diabetics can be obtained by calling the American Diabetes Association-Michigan Affiliate, 552-0480.

The association is a voluntary health agency, concerned with the detection, care and education of the 250,000 diabetics it serves in Michigan.

Farmington Observer

(USPS 167-840)
Published every Monday and Thursday by Observer & Eccentric® Newspapers, 805 E. Maple, Birmingham, MI 48009-0910. Second-class postage paid at Birmingham, MI 48009-0910. Postmaster: Send address changes to Observer & Eccentric®, Newspapers 805 E. Maple, Birmingham MI 48009-0910, Telephone 844-1100.

SUBSCRIPTION RATES
(in Oakland County)
One year \$36.40
(Elsewhere in Michigan)
Newsstand per copy, 50¢
One year \$55.00
(Elsewhere in U.S.A.)

One year \$80.00
All advertising published in the Farmington Observer is subject to the conditions stated in the applicable rate card, copies of which are available from the advertising department, 21898 Farmington Road, Farmington, MI 48326 (313) 477-5450. The Farmington Observer reserves the right not to accept an advertiser's order. Observer & Eccentric® ad-laters have no authority to bind this newspaper and only publication of an advertisement shall constitute final acceptance of the advertiser's order.

DUBIN OPTOMETRIC CLINIC, P.C.

Dr. H. B. Dublin And His Staff
Are Pleased To Welcome
Dr. Craig Swanson
To Our Office For
The Practice of Optometry
*Our larger and newly remodeled offices
are ready to serve your vision needs.*
477-1616

23342 Farmington Rd., Farmington
Downtown Farmington Shopping Center

Men, if you're about to turn 18, it's
time to register with Selective Service
at any U.S. Post Office.

It's quick. It's easy.
And it's the law.

Everyone Welcome ARTS & CRAFTS

- FOOD -
rain or shine
Saturday, Oct. 6, 10 a.m.-6 p.m.

**UNIVERSALIST-UNITARIAN
CHURCH of FARMINGTON**
25301 Halsted Rd. • Farmington Hills
Between Grand River & 11 Mile



C.D. MATURING?

9.0%*

THIS RATE AVAILABLE FOR IRA & ROLLOVERS!



**LIVONIA
COMMUNITY
FINANCIAL ADVISORS**
476-1770

3125 W. 7 Mile • Corner of Meridian
Serving Livonia & Surrounding Communities
Monday-Friday 9:30-5:00
*APRA - \$10,000 minimum deposit • Interest rate accumulates as the withdrawal • 100% principal guarantee
with automatic interest guarantees • Penalty for early withdrawal • Federal Home Loan (Rate A+1)

"HISPANIC TREASURES"

Maria Del Carmen's Grupo Espana



Join The Smith Theatre for the First Musica Viva! 1990-01 Buick International Series Concert presenting Maria del Carmen's Grupo Espana, with Juan Serrano, Ousef Guitierrez.

Smith Theatre - Oakland Community College
Saturday, October 13, 1990
Show Time 8 p.m.

General Admission \$15⁰⁰ Students, OCC Staff and Senior Citizens \$10⁰⁰

471-7700

Reservations accepted up to 3 p.m. on the day of the show

WISHING WELL CARDS & GIFTS

The Area's Widest Selection of Greeting Cards

- Stuffed Animals
- Party Goods
- Invitations
- Russell Stover Candy
- Balloons
- Lilliput Lane
- Gift Wrap
- Gift Bags
- Louis Icart Figures

EARLY BIRD CHRISTMAS SPECIAL:
20 FREE POSTAGE STAMPS

When You Purchase Two Boxes of Christmas Cards,
With This Ad - Expires 10-31-90

DRAKESHIRE PLAZA
35125 Grand River at Drake Rd.
Farmington
Open 7 Days: M-Sat. 10 a.m.-9 p.m.; Sun. 12-5 p.m.

474-6670

Ask For Your Free 1991 Date Book... Available Now



LOWEN CLINIC

is sponsoring a
Patient Appreciation Day
to thank our current patients and
to help introduce new patients to
the many advantages of
chiropractic care.



We will provide:

- Chiropractic treatments for current and former patients
- Examinations for new patients

MAKE AN APPOINTMENT TODAY!

LOWEN CLINIC

8 A.M. — 4 P.M.
Saturday, October 6th, 1990
23280 Farmington Rd.
downtown Farmington, 2 blocks South of Grand River
\$10.00 Donation
Call: 474-4484 for appt.



The proceeds of Patient Appreciation Day are being donated to the Foundation for Chiropractic Education and Research to help them in their efforts to fund scientific research in such areas as: low back pain, headaches, and sports injuries. This research will result in better health care for all chiropractic patients.