

RAKE UP BIG SAVING

FREE
McGRUFF
HALLOWEEN
BAGS

1990 F-150

Tinted glass, gauges, cloth seat, vent windows, 6250 GVWR package, electric 4 speed automatic transmission, argent rear step bumper, 5 P235/75RX15XL all season tires. Stock #2369.



Was: \$13,327

NOW:

\$9999*

1990 TAURUS GL 4 DOOR

Air conditioning, stereo cassette, rocker moldings, speed control, rear defrost, light group, power locks, power windows, power driver seat. Stock #3505.

Was: \$16,336

\$11,995*



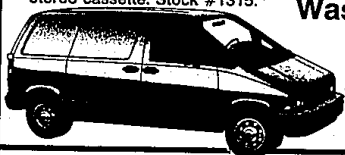
1990 AEROSTAR EXTENDED CARGO VAN

Dual bucket seats, dual rear doors, tinted glass, interval wipers, side door fixed window, 1875 payload package, automatic overdrive transmission, stereo cassette. Stock #1315.

Was: \$14,403

NOW:

\$10,895*



1991 TEMPO

Cloth trim, automatic, air, rear defroster, stereo and more. Stock #00979.

Was \$10,301

NOW:

\$8795*

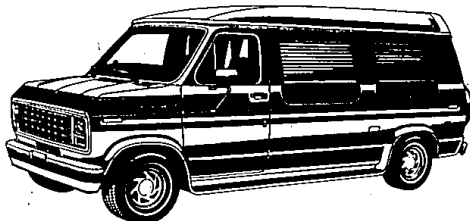
\$500
REBATE



1990 UNIVERSAL STYLE ONE LUXURY CONVERSION

With these conversion options:

Rear overhead air and heat, Vista bay windows, 6" color T.V. with roof rack and antenna, indirect lighting, soft shades, full overhead console, curtains on side and rear windows, oak trim, removable bi-fold sofa, vacuum cleaner, quick release sofa, running boards.



UNIVERSAL
Conversion Vans

The way we put it together sets us apart.

With these chassis options:

Auxiliary fuel tank, power locks and windows, speed control, tilt wheel, stereo with cassette, light and convenience group, 5.0 V-8 EFI with automatic overdrive transmission, trailer towing, handling package, 6500 GVW. Stock #3384.

Was: \$22,104

NOW: \$16,995*

1991 ESCORT GT

Air conditioning, defrost, fog lamps, remote mirrors, AM/FM with cassette, interval wipers, luxury convenience group, sport molding and more. Stock #00553.

Was: \$12,658

NOW: **\$10,295***



\$500
REBATE

1991 ESCORT LX 2 DR.

Automatic, air conditioning, power steering, rear defroster, light group, stereo. Stock #00321.

Was: \$10,031

NOW: **\$8495***



\$500
REBATE

1991 PROBE GL

Automatic transmission, air conditioning, tilt wheel, conversion group, tinted glass, rear defrost, stereo cassette with premium sound. Stock #00357.

Was: \$14,765

NOW: **\$12,195***



\$500
REBATE

1991 CROWN VIC 4 DR. LX

Speed control, rear defrost, stereo cassette, power locks, power driver seat, corner lamps, leather wrapped steering wheel, cast aluminum wheels, illuminated entry, floor mats, white side wall tires. Stock #00784.

Was: \$20,913

NOW: **\$16,445***



\$750
REBATE

"A MEMBER OF THE PHONE QUOTE SERVICES"

JACK DEMMER FORD

MICHIGAN "A" PLAN HEADQUARTERS
Across from Ford's Wayne Assembly Plant
37300 MICHIGAN AVE. AT NEWBURGH ROAD • WAYNE, MI

OPEN LATE MON. &
THURS. 'TIL 9 P.M.

About 15
Minutes
From Everywhere



AT JACK DEMMER
FORD...SERVICE IS
AN ATTITUDE
NOT JUST A
DEPARTMENT!

RECIPIENT OF THE
QUALITY CARE
PRESIDENT'S AWARD.

I-275 EXIT #22
TWO MILES EAST

721-2600 • 1-800-878-FORD

*Price plus tax, title, freight - price includes deduction of rebate.

**See salesperson for detail.