

Suburban Life

Lorraine McClish editor/477-5450



Thursday, October 25, 1980 O&E

(F)B

Circa 1900

Museum gets a gift of fashion

WHEN FARMINGTON Players did their housecleaning this fall the Farmington Historical Museum got first dibs on the items to be recycled.

"Emily McWeeney (in charge of the players' costume closet) called

me and asked what the museum could use," said Nancy Leonard, a member of Farmington Historical Commission.

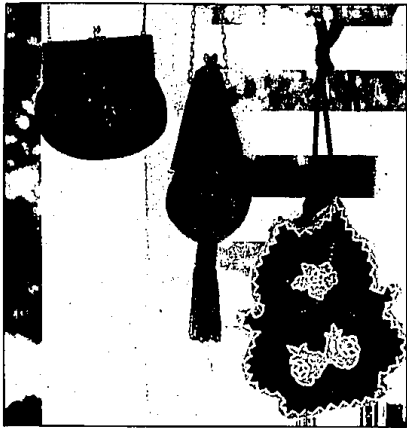
"I stuck close to the period of the house, 1887-1920, (and) came back with a couple of boxes full of remarkable pieces of clothing. There was still plenty for their costume sale," she said.

"I was impressed with what good shape these pieces are in. They need very little if any mending. Emily wanted at least some of the clothes to stay in Farmington, and she knew we'd take as good care of them as the players' had," she said of daytime and evening clothes, dozens of dust caps and dozens of hand bags. The prize pieces were bathing suits worn between 1910 and 1920.

The gift of clothing has caused what will be a major shift in the governor's mansion-turned museum on Grand River west of Farmington Road. The second-floor room that is now furnished as a library will be turned into a room for displaying the newly acquired turn-of-the-century fashions.

"We've got plenty of clothes and enough to change the displays from time to time," Leonard said. "What we need now is mannequins or dressmaker forms to put them on. If anyone has any we could put them to good use."

Those that donate a mannequin or dressmaker form to the museum are asked to call Dick Carvel, at the museum, 473-7275.



SHARON LeMIEUX/staff photographer

Handbags, dozens of them that were used around the turn-of-the-century, now belong to the Farmington Historical Museum. The bags are fashioned in a variety of shapes, sizes, colors and fabrics.



SHARON LeMIEUX/staff photographer

Bonnie Dale and Alissa Bogorad, both docents for Farmington Historical Museum, model and waits can wear the turn-of-the-century fashions. The models had to be chosen carefully because only those with small necks



SHARON LeMIEUX/staff photographer

Tom Griswold (top left) and Kirk Bagg hammer away on the walls of the Haunted House, with light for the job furnished by Kate Spangenberg. All members of the Farmington Area Jaycees have a hand in creating new horrors for the house every fall.

Haunted house open for the stout of heart

A HAUNTED house, with a hallway that winds its way in a maze created to evoke the most chilling of chills and thrills, is open every night from now until Halloween for those capable of facing the ghastly creatures.

Every member of the Farmington Area Jaycees takes part in the think tank that creates the special effects for the monsters, ghosts and witches that stalk the halls of the haunted house.

"We're expecting 10,000 visitors this year," said Kate Spangenberg, who is public relations director for the chapter. "This is by far and away our biggest money-maker, and it takes a lot of manpower — supplied not only by our members — but we get help from the Village Jaycees as well."

"We have a big building crew and we need a minimum of 15 of us to man the house every night, or be one of the monsters, or work the electrical and sound control board." The

(Farmington Hills) police are the security staff.

One room in the house is given over to the electrical and sound control board, operated this year by Jaycee Kirk Bagg, who has devised the mood lighting and has chosen the howls, the groans, the screams, the clanking of chains, the organ music and all the other sounds to provoke tingles up and down the spine.

Another room in the house is over-run with the props and costumes that come out of storage every fall for the Jaycees to pick and choose from, and often add to, as new horrors are created.

"We have new monsters, new stations every year, and every year we get a little more sophisticated," said Jaycee Tom Griswold, who is chairing the haunted house activities this year and doing double duty as a member of the building crew.

This year's new, and most sophisticated, horror is the shower scene from Alfred Hitchcock's "Psycho."

THE JAYCEES are old hands at creating haunted houses.

"It's a tradition of at least 40 years nationwide," Griswold said.

For the past couple of years the local Jaycees have added "Kids Day" to the fall event.

"We've had Kids Day on sunny autumn days, the house was all lit up, but going through the house was still too scary for a lot of the 5-year-olds," Bagg said. "That's why we put emphasis on the party instead of the house."

"All of our monsters say 'Hi!' instead of 'Boo.' All of our monsters shake the kids' hands instead of grabbing them. We want the little ones included so we make it a party with costume contests and bike decorating contests, and games with prizes," Spangenberg said of the event that took place recently.

Promotion for the haunted house was more widespread this year than

Please turn to Page 2



FOR FREQUENT FLYERS.

For more than twenty years, CB skiwear has been designed by racers. And worn by some of the very fastest people on the mountain. So get a CB jacket. And get set for take-off.



Bavarian Village

SKI SHOPS

• BLOOMFIELD HILLS 2540 WOODWARD at Square Lake Rd.	338-0803
• BIRMINGHAM 101 TOWNSEND corner of Perce	644-5950
• MT. CLEMENS 1216 S. GRATIOT 1/2 mile north of 16 Mi.	463-3620
• EAST DETROIT 22301 KELLY between 8 & 9 Mi.	778-7020
• ANN ARBOR 3336 WASHTEAW west of U.S. 23	973-9340
• FLINT 4261 MILLER across from Genesee Valley Mall	313-732-5560
• GRAND RAPIDS 2035 28th St. S.E. between Breton & Kalamazoo	616-452-1199
• SUGARLOAF/SKI AREA 18 miles N.W. of Traverse City	616-228-6700
• TRAVERSE CITY 107 EAST FRONT St. (Bay Side Entrance)	616-941-1999
• FARMINGTON HILLS 21847 ORCHARD LAKE RD. at 12 Mi.	553-8685
• NOVI/NOVI TOWN CENTER south of I 96 on Novi Rd.	347-3323
• EAST LANSING 246 E. SAGINAW at Abbott	517-337-9696
• DEARBORN HEIGHTS 26312 FORD Rd. 1 1/2 miles west of Telegraph	562-5560

OPEN EVENINGS 'TIL 9, SAT. 10-5:30, SUN. 12-5