



UNIQUE IN-TOWN CONTEMPORARY

Victorian charm, atrium soars from lower level to spectacular master suite, custom dream kitchen, 3 bedrooms, 3 1/2 baths and private studio. \$395,000. 645-2030 (FRK-74472)



OPEN SUNDAY 1-4

DESIRABLE TROY NEIGHBORHOOD

Garden room overlooks private yard with inground pool, 1st floor laundry, library, 4 bedrooms and 2 fireplaces. \$245,000. 647-7100 2560 Black Pine, S. of Long Lake, W. of Beech.



DRAMATIC 2660 SQ. FT. COLONIAL

Set high on a hill. Award winning Brighton Schools, 1 1/2 acres, woods at rear, lake privileges to private, quiet Lake Moraine. Offered at \$245,000. 227-9610 (MOE)



ATTENTION HORSE LOVERS!

Great family living in Hartland. Three bedroom Farmhouse on 13 acres with a pole barn and box stalls. Very unique property - Land Contract available! \$225,000. 645-2030 (PAE-63705)



FARMINGTON HILLS SCHOOLS

Pride of ownership shows in this 4 bedroom, 2 1/2 bath Colonial with family room, finished basement, security system, central air and wooded lot. \$181,700. 851-6900 (VAY-71781)



OPEN SUNDAY 1-4

CHARM SAYS IT ALL

Lovely 3 bedroom, 2 1/2 bath Cape Cod offers a country kitchen with family room, exposed hardwood floors. \$199,000. 647-7100 187 Glenhurst, S. of Maple, E. of Cranbrook.



PRIVATE ROAD

Leads you to 1 1/2 acres of serene beauty. New kitchen, 3 bedrooms, 2 baths, sauna, jacuzzi tub and more overlooking pond plus Pine Lake privileges. \$220,000. 645-2030 (LOG-71476)



IMPRESSIVE BRICK COLONIAL

With 4 bedrooms, 2 1/2 baths, central air, alarm, hardwood floors, crown moldings, sprinklers, bay windows, circular stairs, 1st floor laundry and more. \$225,000. 851-6900 (BLD-70734)



SUPERBI

Outstanding contemporary in Bloomfield. This magnificent ranch style home is set on one of the higher crests in Bloomfield affording your nice views. Open floor plan with a great deal of glass. \$825,000. 645-2030 (LOE-71423)



COUNTRY ESTATE

In Farmington Hills. 11 acres of high, rolling, wooded land surrounds this 2 story home with 3 large bedrooms, 3 kitchens, 4 large rooms, 2 fireplaces, pool, sauna, 3 car garage and horse barn. \$555,000. 851-6900 (POR-73744)

RALPH MANUEL ASSOCIATES • REALTORS

647-7100

1821 W. Maple
Birmingham-Bloomfield

645-0020

Commercial
Division

851-6900

32961 Middlebelt
Farmington Hills-
West Bloomfield

645-2030

908 S. Adams
Birmingham-Troy
Rochester

227-9610

6300 Brighton Lk. Rd.
Brighton-
Livingston



STUNNING LAKEFRONT CONTEMPORARY

Magnificent rooms, vaulted ceiling and Pallu windows that capture the best views of Wabek Lake. Dramatic 2 story foyer, master suite retreat and more. \$1,250,000. 851-6900 (WAK)



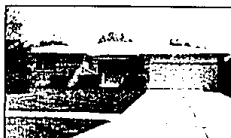
FARMINGTON HILLS MINI-ESTATE

Secluded privacy on 1.7 acres. Built in 1977 with old world charm and craftsmanship. Impressive but comfortable in move-in condition with every convenience. \$535,000. 851-6900 (MIK)



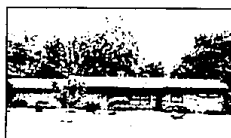
FERNWOOD MODEL

Neutral, up-to-date, clean and open. Attractive courtyard, 3 fireplaces, 2 bedrooms, 2 1/2 baths, 2 fireplaces, pool, sauna, 3 car garage and horse barn. \$555,000. 851-6900 (POR-73744)



PRIDE OF OWNERSHIP

Beautiful 3 bedroom, 2 1/2 bath brick ranch. Freshly painted and papered throughout. Office and workshop in living room, and family room with fireplace. \$149,900. 851-6900 (HAE-72045)



SPACIOUS 3 BEDROOM RANCH

Great room with fireplace and wet bar, separate entrance in-law suite, large screened porch overlooking nearly an acre. Reduced to \$179,900. 647-7100 (PAE-71665)



BEAUTIFUL BEVERLY HILLS

Lovely brick 2 story with 2 large bedrooms, living room with fireplace, private dining room, plus porch and finished basement. \$169,900. 647-7100 (HIT-74167)



CANTERBURY COMMONS

Lovely 4 bedroom Colonial with family room, private dining room plus den and finished basement. Lots of updating - more conditions! \$174,900. 647-7100 (MUE-70915)



STUNNING CONTEMPORARY QUAD

Relax in this beautiful condo overlooking a lovely pond. Great room with mirrored wall fireplace, large loft, 2 bedrooms and 2 1/2 baths. \$139,800. 645-2030 (MAE-74522)



ADAMS WOODS - BEST BUY!

Contemporary condo with neutral decor, 3 bedrooms, 2 1/2 baths, 2 fireplaces, custom alarm and private 23 x 24 courtyard. Newly listed at \$165,000. 645-2030 (WDT-74612)



ENJOY LIVING

In a country setting yet close to shopping and expressways. This 3 bedroom Cape Cod sits on an acre. 1 1/2 car garage, plus shed! Great opportunity! \$135,000. 647-7100 (LEH-74049)



FABULOUS CONTEMPORARY RANCH

Gorgeous 4 bedroom with amazing decor. Just turn the key and move in. Beautiful treed, private lot. House totally redecorated in last 1 year. \$134,900. 851-6900 (BRF)



PINE LAKE ESTATES

Three bedroom walk-out ranch with white formica kitchen with ceramic floor. \$163,500. 851-6900 4324 MacQueen, E. of Orchard Lk. and S. off Long Lk. on Normanwood.



WATERFRONT CONDO

On all sports Square Lake. Spacious floor plan with 2 bedrooms, 2 baths, all appliances and views from your living room balcony. \$99,500. 647-7100 (KLH-71769)



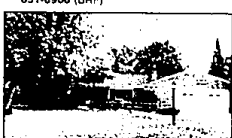
OPEN SUNDAY 1-4

DELIGHTFUL SALT BOX COLONIAL. New carpet, paint and central air in 1989. Beautiful family room, 3 bedrooms and 1 1/2 baths. Reduced to \$134,900. 851-6900 6932 Sussex, N. of Cooley Lk., E. of Union Lk.



BLOOMFIELD HILLS CONDO

Delightful and sunny 1st floor end unit. Two bedrooms, 1 1/2 baths, newer kitchen, neutral decor and immediate possession. Offered at \$78,500. 647-7100 (HIY-74538)



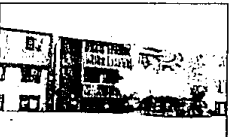
GREAT OPPORTUNITY

With just a little TLC this 3 bedroom, 1 1/2 bath home can be a real winner. Family room, laundry room, 2 car garage and huge lot. \$93,900. 647-7100 (MUY-74615)



COBBLESTONE VILLAGE COLONIAL

Accented by extensive decking, forced flower beds, all professionally landscaped and great family neighborhood in New Hudson. \$129,900. 227-8610 (TCN)



FARMINGTON HILLS

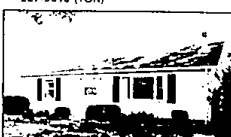
Top floor 2 bedroom, 2 bath Condo in a prime location in complex. Room for laundry in unit, lots of storage, balcony and carport. \$69,900. 851-6900 (TWE-69299)

HOME OF THE 1990 HOMEARAMA
PINE CREEK RIDGE
Spectacular homesites
now available in the
Brighton Area!



PINE CREEK

Pine Creek Lodge • 227-9610
Developed by Abbey Homes



PRIDE OF OWNERSHIP

Is evident in this warm and cozy ranch - den, 2 bedrooms and lovely kitchen. Ideal for young couple or empty nesters. \$74,000. 851-6900 (NEN-74621)

RELOCATION 1-800-R-MANUEL