

Black and white photos present special appeal

A question frequently asked during my recent exhibit was why I photograph in black and white. This is something that deserves a thoughtful answer.

What black and white lacks in color, it gains in dramatic impact. Color, of course, is beautiful and appeals to our senses. It has a ring of familiarity and makes us feel at home in our world. People are comfortable with color photographs because they reflect what is seen and encountered in their daily lives.

But while the intensity and variety of color can complicate the appearance of a scene, black and white has a graphic simplicity. It has an ability to convey mood, form and pattern in tones of light and dark that color just can't do.

BLACK AND white is a step removed from the real world. With color eliminated you can more easily concentrate on the other ingredients that comprise a photograph.

Black and white photographs present more of a challenge to the photographer than color.



photography

Monte Nagler

More controls and image manipulation are available to the black and white photographer both in the field and in the darkroom, giving him greater creative freedom. You might say that color will take care of itself while you have to take care of black and white.

Most serious photographers prefer working in black and white because they feel they can best express themselves in this form. And a perceptive viewer can better get the photographer's message by the subtleties found in a good black and white print.

ONE'S IMAGINATION is more stimulated by a black and white photograph, analogous to digesting a

But while the intensity and variety of color can complicate the appearance of a scene, black and white has a graphic simplicity. It has an ability to convey mood, form and pattern in tones of light and dark that color just can't do.

good book rather than seeing the movie.

These are then some of the reasons why I photograph primarily in black and white.

Light, a vital element in any photograph, can have a profound effect on a black and white photograph.

Black and white pictures have a quality that is more interpretive and less rooted in the real world.



Monte Nagler took this photograph of birch trees and morning mist near Negaunee in Michigan's Upper Peninsula. It illustrates the

impact created by a strong black and white photograph.

creative impressions

This column appears regularly. Send news items to: Creative Impressions, Creative Living, 36251 Schoolcraft, Livonia 48150.

BOOK FAIR

The Midwest Antiquarian & Collectible Book Fair will run 9:30 a.m. to 5:30 p.m. Friday-Saturday, Oct. 26-27, at the Detroit Public Library, 5201 Woodward. Admission is free. Sponsor is Friends of the Detroit Public Library. The fair caters to the collector, nostalgia buff, generalist, specialist and ordinary reader. Twenty-five Midwest book dealers will exhibit and offer their wares for sale.

JAZZ SERIES

The Detroit Symphony Orchestra Hall 1990-91 Michigan Bell Jazz Series will open at 8 p.m. Sunday, Oct. 28, with jazz greats George Shearing on piano, vocalist Joe Williams and guitarist Joe Pass in "A Gathering of Friends."

For tickets, call 833-3700.

DSO IN CONCERT

Newly appointed Detroit Sympho-

ny music director Neeme Jarvi will lead the orchestra in his second of three weeks of performances, highlighted by the first DSO performance of Mrs. H.H.A. Beach's Symphony in E minor since 1918.

Pianist Horacio Gutierrez will join Jarvi and the orchestra for Prokofiev's Piano Concert No. 2 in G minor. Tchaikovsky's Francesca da Rimini completes the program.

Performances will take place at 8 p.m. Thursday, Nov. 1, 10:45 a.m. Friday, Nov. 2, and 8:30 p.m. Saturday, Nov. 3, at Orchestra Hall. Call the box office: 833-3760.

GLASS SHOW

The Michigan Depression Glass Society presents its 18th annual All Depression Era Glass Show and Sale 10 a.m. to 5 p.m. Saturday-Sunday, Nov. 3-4, at the Dearborn Civic Center, 15801 Michigan Avenue.

Thirty dealers from many states will exhibit American-made glassware dating from the early 1900s through 1950.

In addition to the colorful ma-

chine-made glassware made during the Depression, finer handmade glassware made by Fostoria, Cambridge, Helsey, Imperial, Fenton and Duncan Miller also will be featured.

Special guests will be Gene Florence, author of books on Depression glass, Teri Steele, editor and publisher of The Depression Glass Daze newspaper, and Bill and Phyllis Smith, Cambridge glass specialists.

Richard Holdenbrand will repair damaged glassware during show hours.

A donation of \$2 will be requested at the door. It will provide admission for both days. Food service will be available.

The Michigan Depression Glass Society was founded in 1972. It is devoted solely to the preservation of Depression era glass.

Meetings are the first Monday of each month at the Livonia Senior Citizens Building, 15206 Farmington Road, Livonia.

Call Wanda Britton, show chair, 421-3098.

ON STAGE

Hedford Township vocalist Julie Rose will take part in a Friends of the Opera of Michigan grand concert at 4 p.m. Sunday, Nov. 4, in the Warren Woods Middle School Auditorium, 12 Mile and Schoenherr, Warren.

The concert is a massive tribute to the most beloved composer of Italian opera, Giuseppe Verdi.

Joining forces for this major music event are Italian tenor Giuseppe Costanzo of Milan, the Macomb Symphony Orchestra under conductor Thomas Cook, the 50-voice Detroit Canata Academy, several Michigan vocalists and pianist Bernard Katz.

Concert tickets are \$15. Call 582-0997.

GREAT MASTERS

"The Seventh Age" of the Artist: Great Masters in their Late Works" will be the subject of Professor Marvin Eisenberg's slide presentation at 1:30 p.m. Wednesday, Nov. 7, in the Liberal Arts Theater at Schoolcraft

College, 18600 Haggerty, Livonia. Eisenberg, professor emeritus, taught for 40 years at the University of Michigan, nine as chairman of the History of Art Department.

He has long studied the works of Titian, Michelangelo, Leonardo, Rembrandt, Degas, Cezanne, Beethoven, Verdi, Stravinsky, Shakespeare, Goethe and modern American and British poets.

He has found that they all share certain aspects of style and expression in the masterpieces they created late in their lives.

His free presentation is sponsored by the Schoolcraft College Committee to Promote the Arts. An informal reception with refreshments will follow.

AUTHOR ON HAND

Renowned children's book illustrator Jan Brett will sign copies of her newest book, "The Wild Christmas Reindeer," 6:30-7:30 p.m. Friday, Nov. 9, at Borders Book Shop, Novi Town Center.

Brett wrote and illustrated this

book as well as several others: "The First Dog," "Annie and the Wild Animals," "Fritz and the Beautiful Horses."

PHOTO SHOW

The 21st annual Michigan Photography Exhibition will be Oct. 25 to Nov. 19 at the Scarab Club, 217 Farnsworth, Detroit.

Opening reception and awards presentation will be at 3 p.m. Sunday, Oct. 28. Jurors critique will be at 5 p.m. Wednesday, Nov. 7.

In addition to the Best of Show award, three medals will be awarded in both color and black and white.

PAPER SNOWFLAKES

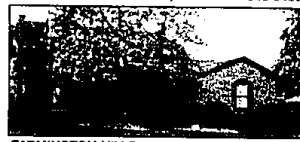
A special exhibition of intricate paper snowflakes by artist Thomas Clark will be on display Nov. 20 to Jan. 20 at the Ann Arbor Hands-On Museum, 219 E. Huron.

Snowflakes are cut in the shapes of dinosaurs, plants, insects and butterflies. Simple instructions, paper and scissors will be provided for those who would like to try their own.

5,650 Properties SOLD in the Metropolitan Area So Far This Year by



NORTHVILLE \$369,900 348-6430



FARMINGTON HILLS \$217,000 644-4700



FARMINGTON HILLS \$44,900 261-0700



LATHRUP VILLAGE \$113,900 559-2300



OAK PARK \$59,900 559-2300



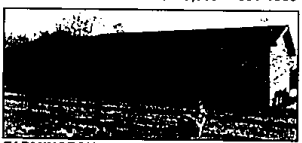
FARMINGTON HILLS \$114,000 851-6000



FARMINGTON HILLS \$224,900 851-1900



FARMINGTON HILLS \$229,900 851-1900



FARMINGTON HILLS \$82,900 477-1111



SOUTHFIELD \$53,900 477-1111

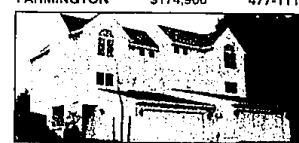
Call Real Estate One to put Michigan's most successful seller of homes to work for you.

Our 61st Year

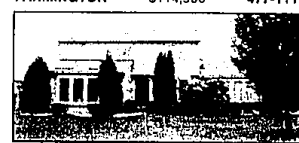
Real Estate One, Inc., 1990



FARMINGTON \$174,900 477-1111



FARMINGTON \$114,900 477-1111



FARMINGTON HILLS \$229,900 477-1111



FARMINGTON HILLS \$169,000 851-1900



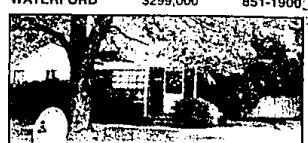
Michigan's Largest Real Estate Company



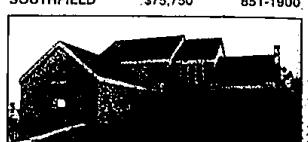
FARMINGTON HILLS \$249,500 851-1900



WATERFORD \$299,000 851-1900



SOUTHFIELD \$75,750 851-1900



FARMINGTON HILLS \$244,900 851-1900

Bloomfield Hills 614-1700 • Farmington 477-1111 • Lathrup Village Southfield 559-2300 • Northville Novi 348-6430 • Royal Oak 548-9100 • West Bloomfield 681-5700
35 offices to serve you plus affiliated offices throughout Michigan and other world cities. Tridling 350-7111 • Web location info 851-2600