

Neene Jarvi leaves 'em applauding, cheering

By Avigdor Zoromp
special writer

The honeymoon continued through Neene Jarvi's third and final week here for this part of the Detroit Symphony Orchestra season. His characteristic repertoire of rare, little known works continued to raise cheers from the audience. The only major work from the standard repertoire — the Symphony No. 1 by Brahms — was scheduled at the end of this three week stretch.

In addition to his artistic capability, Jarvi demonstrated that he is a man of action. The lack of money for recording contracts proved to be a stumbling block to everybody else. But instead of just complaining about it, Jarvi opted for a personal, hand-written appeal, a copy of which was inserted into the program. Hopefully, this will fine it hard to resist this appeal for financial help for the project.

Any contest between short, obscure selections and a long, massive Brahms symphony would be lopsided, except when the conductor happens to be Jarvi. He has the uncommon

ability to elevate obscure, even benign selections to a stature they would never attain elsewhere.

But credit should be given to obstinate Heinz Holliger, who performed the Oboe Concerto by Martinu and the virtuosic Variations in F Major by Hummel. Of these, the Martinu concerto is the more substantial and intricate masterpiece.

Martinu is one of a rare breed of 20th century composers whose music can still fully reflect the glitter of the traditional part through a thin contemporary layer. This concerto poses some unusual challenges for the soloist — one is the pressure to complete with rather heavily orchestrated passages that don't always exhibit the traditional deference to the solo instrument. Holliger was able to stand up to this challenge without any significant wear, emerging fresh and ready to embark on the technically dazzling Hummel variations.

Another obscure selection, which opened the program, was two short Swedish Folk melodies by the Norwegian Johan Svendsen. He was a contemporary of Greig and, as these melodies sug-

gest, was greatly influenced by him.

Some conductors and performers may feel safer with the non-standard repertoire, where they are less likely to be closely monitored by listeners and critics. Jarvi, however, has shown that he is more than capable of standing up to the rigors of the standard repertoire, and he definitely

isn't among those who run from these challenges. But even there he doesn't fail to leave his personal imprint.

The Brahms First which he presented can be paraphrased, in some sense, as a "kinder and gentler" Brahms. It was revealing even in the instances that didn't reflect my preference, which tends toward a more assertive and climactic approach.

The middle portion of the third movement, for example, was too timid for me, but gave the pounding triplets more time to sink in.

The principal theme of the final movement started in a rather slow

tempo, reflecting peace and tranquility. Only gradually did the tempo and momentum pick up, making the effect similar to that of Smetana's "Moldau." The final, resounding C major tonic was a symbolic summation of Jarvi's three week present stint.

Pianist's approach was impressive

By Avigdor Zoromp
special writer

As with many Soviet artists, pianist Nina Lechuck's thorough training and discipline were reflected in her performance for the Julius Chajes Music Fund Series at the Jewish Community Center of West Bloomfield on Nov. 4.

Her approach is impressive even to those who may not agree with every detail. Her performance, a 19th century style, of the four Scarlatti sonatas, for example wasn't my idea of authentic Scarlatti. But, her refined, expressive coloring of these short pieces showed an uncanny ability to mold them in her own image, even if it differs from ours.

Beethoven's Pathétique Sonata, the most popular work on the program, was rendered with rare agility. The second movement, well-known as Karl Haas' theme for his radio program, was presented in a substantially better way than that tired old radio theme. Her fluency was undaunted in the final movement in spite of a wrong turn before the coda which caused an unplanned, but smooth repeat of the recapitulation (Now, why do I have to reveal that awful secret?).

Her rendition of the two works by Chajes would have delighted the composer if he were alive. The first, Valde Sentimentale, is an early work which imitates Chopin's style and it sounded more Chopinesque than some true Chopin selections on this

program — the Barcarolle in F Sharp Major, Nocturne in D Flat Major and a Polonaise in F Sharp minor.

She demonstrated good technique with these selections, but some of the Polish character was lacking, especially in the Polonaise which was too metronomical.

Also on the program were Liszt's arrangements of two lieder by Schubert in which some of the refined poetry came through the demanding technique.

Lechuck is a talented pianist who deserves attention. She is a member of the University of Michigan faculty in Ann Arbor and received her training with some top teachers in Leningrad.

COLDWELL BANKER • SCHWEITZER



TROY **OPEN SUNDAY 1-4**
4523 WINTERGREEN, S. of Long Lake, W. of Northfield Pkwy. Professionally decorated home offers great room, hardwood floors, 1st floor laundry, central air, center island kitchen. Backs to woods. \$559,900 524-9575



JUST REDUCED
BIRMINGHAM. This beautiful, traditional colonial has everything you are looking for: 2 fireplaces, family room, library, separate dining room, spacious halls and stairs. \$259,900 (Z68G1N) 651-1800



TROY **OPEN SUNDAY 1-4**
6740 LOCUST, South of South Blvd., W. of Crooks. Private lot with creek, 5 bedrooms, 2 1/2 baths, library, central air, 1st floor master suite, French doors leading to den, huge deck. \$239,825 524-9575



ROCHESTER HILLS **OPEN SUNDAY 1-4**
470 WILLARD, N. of Avon, W. of John R. Custom built, 5 level contemporary home located on just under an acre of heavily wooded, private lot. Ideal for the auto buff. \$145,000 651-1040



DESIRABLE LOCATION
BIRMINGHAM. Walk to downtown. Vinyl siding, garage, fenced yard, rec room, some hardwood floors and all appliances. Freshly painted and easy maintenance. \$98,900 (B0111A) 647-1900



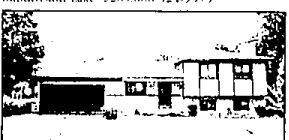
NEW CONSTRUCTION
BLOOMFIELD TWP. Traditional custom built home by John C. Lutz. Company's several building sites available within prestigious subdivision. Quality construction with minimum 4000 sq. ft. From \$700,000 (Z6KE2N) 646-1800



ROCHESTER HILLS **OPEN SUNDAY 1-4**
2474 EVERGREEN COURT, N. of Avon, E. of Adams. Executive home in Meadowbrook Valley Sub. features lower walk-out basement, ceiling to floor stone fireplace, library, central air. \$209,900 651-1040



TROY **OPEN SUNDAY 2-5**
6583 MOUNTAIN, South of South Blvd., E. of Crooks. Sharp Tudor features 4 bedrooms, library, 1st floor laundry and light neutral decor. Large deck overlooks open area with view of subdivision Lake. \$205,000 524-9575



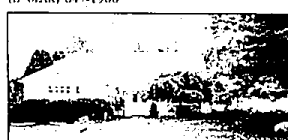
SHOWS PRIDE OF OWNERSHIP
WEST BLOOMFIELD. This lovely quad-level home on picturesque lot with West Bloomfield schools, is nicely decorated and landscaped. Gas Lake privileges. Mexican condition. \$114,900 (W21MPP) 683-1122



CAPE COD IN SYLVAN LAKE
SYLVAN LAKE. Custom built home features 4 bedrooms, 2 1/2 baths, large deck with hot tub, some oak flooring, finished rec room, library, stone fireplace and large kitchen with built-ins. \$136,000 (B01W10) 647-1900



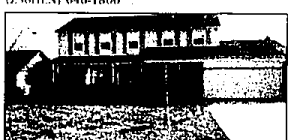
BEAUTIFULLY LANDSCAPED
BLOOMFIELD HILLS. Well maintained Colonial on acre plus lot and Birmingham schools. Space for pool or tennis courts. Four bedrooms, 4 1/2 car attached garage and lots of updating. \$199,900 (B70LAK) 647-1900



CHARMING
BLOOMFIELD TWP. Unique home completely redecorated. Open floor plan, gorgeous hardwood floors, 2 fireplaces and countless features. \$139,000 (B120VE) 647-1900



CURB APPEAL
BIRMINGHAM. In-town location. 3 bedrooms, 2 1/2 baths, family room plus additional room perfect for nursery or computer. Available for immediate possession. Remodeled throughout. \$259,900 (Z65HEN) 646-1800



ROCHESTER HILLS **OPEN SUNDAY 1-4**
830 BROADWOOD LANE, S. of Twicken, W. of Evergreen. Vacation at home! 1 bedroom, 2 1/2 bath Colonial features golf course, clubhouse, pool and tennis in the subdivision. Gorgeous view from deck. \$209,850 (L20BR6) 524-9575



FOR THE PARTICULAR BUYER
SOUTHFIELD. Beautiful, 1 bedroom Colonial with elementary school on site and convenient to churches, shopping, the Lodge and 16th. \$148,900 (B00P11) 647-1900

TROY **OPEN SUNDAY 1-4**
6270 EMERALD LAKE DR. N. of Square Lake, E. of Rochester. Lakefront Colonial in Emerald Lakes. Over 2100 sq. ft. of living space. First floor laundry, huge lot, custom deck, sprinkler system. \$199,000 524-9575

TROY **OPEN SUNDAY 1-4**
3810 BEACH, S. of Wattles, E. of Adams. Updated, all aluminum trim, brick ranch makes for low maintenance exterior. Fireplace in living room. Also a sun porch. \$149,900 524-9575

ROCHESTER HILLS **OPEN SUNDAY 1-4**
309 Shellbourne Dr. N. of Walton, W. of Adams. This stunning Tudor features open kitchen, breakfast and family room area, library, large master suite. \$249,000 651-1040

ROCHESTER HILLS **OPEN SUNDAY 1-4**
1873 Christy Court, N. of Hamilton, E. of Crooks. Lovely home with a beautiful wooded setting. A relaxing deck, a cozy fireplace and attached garage. Land Contract. \$105,900 651-1040

BEAUTY!
CANTON. 1988 built. Impressive 3 bedroom, 1 1/2 baths. Family room with fireplace, premium private lot, central air. \$117,000 (P05BL4) 453-6800

UPDATED TO PERFECTION!
PLYMOUTH. In ground pond, accented with redwood deck with hot tub. Neatly decorated with Andersen windows. \$198,500 (P158HE) 453-6800

RANCH - PRETTY SETTING
SOUTHFIELD. A bedroom ranch with beautiful view and fireplace for those cold winter evenings. \$98,900 737-9000

MINT CONDITION
SOUTHFIELD. Condo, 3 bedrooms, 2 1/2 baths, finished basement and loads of storage space. \$90,000 737-9000

GORGEOUS TUDOR
WEST BLOOMFIELD. Spacious home, tastefully decorated and many, many extras. Fall in love with this one! \$208,900 737-9000

BEAUTIFULLY MAINTAINED COLONIAL
BLOOMFIELD. A bedroom, 2 1/2 bath home with hardwood floors and crown moldings. \$227,000 737-9000

Real Estate Classes Forming Monthly—Call Today

Grosse Pointe Farms
886-5800
Grosse Pointe Hill
885-2000
Grosse Pointe Woods
886-4200
St. Clair Shores
777-4940

Clinton
296-0300
Shelby
264-3320/739-7300
Rochester Hills
651-1040

Stirling Heights
268-6000
Royal Oak
399-1400
Troy
524-9575

Birmingham
647-1800
Birmingham
642-2400
Bloomfield Hills
646-1800

Lakes
663-1122
West Bloomfield
737-9000
Northville
347-3950/349-1515

Livonia
462-1811
Plymouth/Canton
453-6800/459-6000
Ann Arbor
930-0200
Ypsilanti
485-7600

