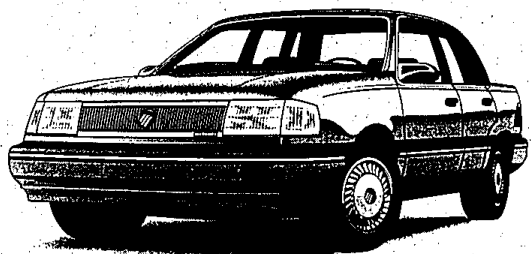


YOUR METRO DETROIT LINCOLN-MERCURY DEALERS ANNOUNCE...

NEW BIG DOUBLE DISCOUNT SAVINGS!

THE BIGGEST SAVINGS OF THE YEAR.

SAVE: \$2,700*
ONLY \$199^A MONTH

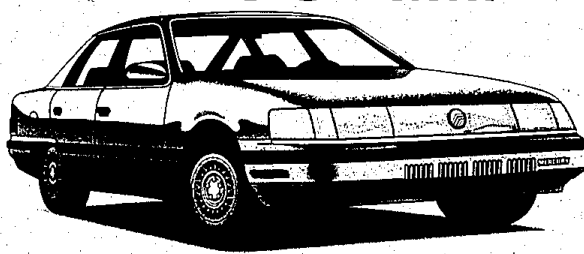


'91 TOPAZ GS
 THE COMPACT SEDAN THAT'S BIG ON VALUE.

STANDARD EQUIPMENT INCLUDES: • Front-wheel drive • 2.3-liter engine • Power steering • Power brakes • Electronic AM/FM stereo with clock • 4-wheel independent suspension • Interval wipers • Dual power mirrors • Tinted glass • And more!

OPTION PACKAGE 385A INCLUDES: • Automatic transaxle • Air conditioner • Electric fuel-filler door and decklid releases • Polycast wheels • And more!

SAVE: \$2,000*
ONLY \$299^A MONTH



'91 SABLE GS

"CAR AND DRIVER'S" TEN BEST TWO YEARS RUNNING.

STANDARD EQUIPMENT INCLUDES: • 3.0-liter V-6 engine • Electronic automatic overdrive transaxle • Power steering • Power brakes • Air conditioner • Dual power mirrors • And more!

OPTION PACKAGE 451A INCLUDES: • Speed control • Power lock group • Power windows • 6-way power driver's seat • Electronic AM/FM stereo cassette • Rear window defroster • 15" aluminum wheels • And more!

24 Monthly Lease Payments at	\$199
Cash Down Payment	\$1,666.28
Refundable Security Deposit	\$200.00
Total Amount of Payments	\$4,766.00
Total Cash Due at Lease Inception Includes First Month Payment	\$2,065.28
RCL Cash Back	\$600.00
Customer Cash Reduces Down Payment to	\$1,066.28



Quality is Job 1.

24 Monthly Lease Payments at	\$299
Cash Down Payment	\$2,562.67
Refundable Security Deposit	\$300.00
Total Amount of Payments	\$7,776.00
Total Cash Due at Lease Inception Includes First Month Payment	\$3,767.67
RCL Cash Back	\$600.00
Customer Cash Reduces Down Payment to	\$1,962.67

ADDITIONAL PROGRAM INFORMATION: *Total savings based on cash back plus option package savings. Customer Cash Back directly from Lincoln-Mercury on 1991 models with a 24-month Ford Credit Red Carpet lease: \$600 on Topaz GS and Sable GS. Customer Cash Back can be applied toward payment, refundable security deposit and first month's payment or you may keep the cash. Option package savings (Topaz pkg 385A, \$2100 and Sable pkg. 451A, \$1400) based on sticker price of package vs. sticker price of options purchased separately. For cash back and special lease terms you must take new vehicle delivery from dealer stock by 2/28/91. **Total cash due at lease inception includes a refundable security deposit, cash down payment and first month's lease payment. **Lease payment is based on Manufacturer's Suggested Retail Price.

\$11,246 on Topaz GS, \$16,417 on Sable GS, including option package savings per model as shown above. Lease payment includes destination charges but excludes title, taxes and license fee and is based on a 24-month closed-end Red Carpet Lease from Ford Credit. Lessee may have the option to purchase the car at lease end at a price to be negotiated with the dealer at lease inception. However, lessee has no obligation to purchase the car at lease end. Lessee is responsible for excess wear and tear. 30,000 miles is the total mileage allowed with an \$11 per mile charge over 30,000. Lease subject to credit approval and insurability as determined by Ford Credit. See your Lincoln-Mercury dealer for his price and terms. See your dealer for details.



PLUS FACTORY-TO-DEALER CASH CAN SAVE YOU HUNDREDS MORE WHEN YOU BUY.

ANN ARBOR
Apollo
 2100 W. Stadium Blvd.
 668-6100

DEARBORN
Krug
 21531 Michigan Ave.
 274-8800

DETROIT
Bob Maxey
 16901 Mack Avenue at Cadieux
 885-4000

DETROIT
Park Motor
 18100 Woodward Ave.
 Opposite Palmer Park
 869-5000

FARMINGTON
Bob Dusseau
 31625 Grand River Ave.
 474-3170

GARDEN CITY
Stu Evans
 32000 Ford Rd.
 425-4300

PLYMOUTH
Hines Park
 40601 Ann Arbor Rd. (at I-275)
 425-2444

WATERFORD
Mel Farr
 4178 Highland Road
 683-9500

ROCHESTER
Crissman
 1185 South Rochester Rd.
 652-4200

ROSEVILLE
Arnold
 29000 Gratiot at 12 Mile Rd.
 445-6000

ROYAL OAK
Diamond
 221 N. Main St. at 11 Mile
 541-8830

SOUTHFIELD
Star
 24350 W. 12 Mile Rd.
 354-4900

SOUTHGATE
Stu Evans
 16800 Fort St. at Pennsylvania
 285-8800

STERLING HEIGHTS
Crest
 36200 Van Dyke at 15 1/2 Mile
 939-6000

TROY
Bob Borst
 1950 West Maple
 643-6600

YPSILANTI
Sesi
 950 East Michigan
 565-0112