

# RECYCLING IS GOOD NEWS:

Overcrowded landfills. Garbage barges no one wants to deal with. Terminal trash.

News.

Bad news.

The good news? More and more people, businesses and industries are finding ways to recycle.

It takes more than 6,000 tons of newsprint each year to print The Observer & Eccentric Newspapers plus a number of other publications, so we're doing a number of things to help the solid waste situation:

1. For years we've sold our waste newsprint to a recycling firm.

2. 25% of the newsprint we print on is recycled and we're increasing this amount by another 25% this year.

3. Our employees have begun to routinely put office paper (memos, computer paper, waste copy paper) in recycle bins instead of waste baskets.

Of course, we still deliver thousands of newspapers twice each week. It's our business to bring you news of your local government, schools, sports scene and community events; the news you need to know.

We don't cover world news,  
but we care about the world.

*The Observer & Eccentric Newspapers*

And when you're finished reading your hometown newspaper there are places that will recycle them.

We've listed a few for you on this page because we think recycling is Good News.

THE  
**Observer & Eccentric**  
NEWSPAPERS

**Here is a list of recycling centers in or near The Observer & Eccentric circulation area. Please call the center nearest you for guidance in preparing your recyclables**

## LIVONIA

### LIVONIA RECYCLING CENTER

**After Sept. 14-Livonia Residents Only**

Tuesday through Saturday 9 a.m. - 5 p.m.  
Glendale, East of Farmington Road  
South of the Jefferies Freeway  
522-1620

Newspapers, glass (clear, green and brown), window glass, tin cans, aluminum, batteries (vehicle only), anti-freeze, motor oil, plastics (coded '1' or '2'), white bond office paper and computer paper.

## CANTON

### CANTON RECYCLING

10:00 a.m.-4:00 p.m. Fridays  
10:00 a.m. - 2:00 p.m. Saturdays  
42020 Van Born between Haggerty and Lilley  
397-5801

Newspapers, glass (clear, green and brown), all metals including large appliances, batteries (automotive only), cardboard, motor oil, paint, (only from Canton Township residents), grass clippings (only from Canton Township residents), concrete, bricks, dirt sod (fee may be charged).

## WASTE MANAGEMENT WOODLAND MEADOWS

8:00 a.m. - 5:00 p.m. Monday - Friday  
8:00 a.m. - Noon on Saturday  
39900 Van Born between Haggerty and Hannan  
326-0993

Newspapers, corrugated cardboard, glass (clear, green and brown), aluminum, tin, plastic (high density i.e. milk jugs and laundry bottles), large appliances.

## PLYMOUTH

### CITY OF PLYMOUTH-RESIDENTS ONLY

4:00 p.m. to 7:00 p.m. Tuesday and Thursday  
10:00 a.m. to 4:00 p.m. Saturday  
201 South Main  
(next to Fire Department behind City Hall)  
453-1234

Newspapers, corrugated cardboard, glass (clear, green, brown), tin, aluminum.

## CITY OF NORTHVILLE

### RESIDENTS ONLY-PROOF REQUIRED

#### NORTHVILLE DPW

Wednesday 3:00-7:00 p.m.  
Saturday 11:00 a.m.-5:00 p.m.  
650 Doheny, North of 7 Mile  
349-1300

Newspapers, glass (clear, green and brown) tin cans, aluminum, automotive and household batteries, motor oil, plastic milk jugs

## BIRMINGHAM

### BIRMINGHAM RECYCLING CENTER

Open 24 hours, seven days a week, with assistance between 11:00 a.m. - 1:00 p.m. on Saturdays  
Holland Street off Eton (south of Maple)  
642-8888

Newspapers, glass (clear, green and brown), tin, aluminum, batteries, plastic (half-gallon or larger or smaller coded '1' to '2'), batteries, (automotive and household), cordless appliances

## FARMINGTON

### CITY OF FARMINGTON

#### FARMINGTON AND FARMINGTON HILLS RESIDENTS ONLY

7:30 a.m. - 7:30 p.m. Monday through Friday  
9:00 a.m. - Noon Saturday and Sunday  
(West of Farmington Road)  
473-7250

Newspapers, glass (clear, green, and brown), batteries, (automotive and household), motor oil, plastic (high density, i.e. milk jugs and laundry bottles)

## FARMINGTON HILLS

### CITY OF FARMINGTON HILLS DPW

#### FARMINGTON HILLS RESIDENTS ONLY

27245 Halsted Road, South of 12 Mile  
553-8580

Seven days a week, dawn to dusk

Newspapers, glass (clear, green and brown), batteries, (automotive and household), motor oil, plastic (coded 1 and 2)

## LATHRUP VILLAGE

First Saturday of every month 10:00 a.m. to 2:00 p.m.

19101 Twelve Mile  
(in front of Southfield-Lathrup High School)  
591-0001

Newspapers, frosted-type plastic, motor oil, household and automotive batteries.

## REDFORD TOWNSHIP

### REDFORD TOWNSHIP RECYCLING CENTER

9:00 a.m.-2:00 p.m. Saturdays only

Inkster Road between Jeffries Freeway and Plymouth Rd.  
BFI Transfer station (blue building behind Trico Laundry Bldg.)  
531-3110

Newspapers (flat, with glossy inserts removed), glass (clear, green and brown), tin cans (rinsed with labels removed), and plastic (coded '1' or '2')

## SOUTHFIELD

### CITY OF SOUTHFIELD RECYCLING CENTER (RESIDENTS ONLY)

Open dawn until dusk

26000 Evergreen (behind the Civic Center Ice Arena)  
354-9180

Newspapers, glass (clear, brown and green), tin, aluminum, plastic (HDPE only, coded '1' and '2'), household batteries only.

## TROY

### CITY OF TROY PUBLIC WORKS FACILITY

Seven days a week, 24 hours

4693 Rochester Road, (south of Long Lake)  
524-3399

Newspapers, glass (clear, green and brown), motor oil, automotive and household batteries, plastic (frosted and clear).

\*Six drop off locations for newspapers: Civic Center, Fire Station #3 and #6, Police Station, Suburban Ambulance, Boys and Girls Club on John R and Long Lake Road.

## CITY OF NOVI

24-hour drop-off center.

45175 W. 10 Mile Road (by City Hall)  
347-0460

Newspapers, glass (clear, green and brown) tin cans, aluminum, opaque plastic, large appliances accepted 8 a.m. - 3 p.m. daily and third Saturday of the month 8 a.m. - noon. Appliances accepted at 26300 Develand.

## WATERFORD TOWNSHIP

Monday through Saturday

9:00 a.m.-4:00 p.m.

Southeast corner of M-59 and Crescent Lake Road  
674-3111

Newspapers, glass, tin cans, aluminum, automotive batteries, motor oil, plastic (coded '1' and '2').

## WEST BLOOMFIELD TOWNSHIP

Saturday 10:00 a.m. - 3:00 p.m.

2400 Haggerty

(South of Pontiac Trail)  
682-1200

Newspapers, glass, office paper, tin and aluminum cans, plastics (coded '1' or '2')

## NORTHVILLE TOWNSHIP

RESIDENTS ONLY

24 hours a day, unmanned station by Fire Station  
16155 Shelden Road North of 5 Mile  
348-5800

Newspapers, glass (clear, green and brown) tin cans, aluminum, automotive and household batteries, motor oil, plastic milk jugs

## PLYMOUTH TOWNSHIP

### PLYMOUTH TOWNSHIP RECYCLING STATION (Residents Only)

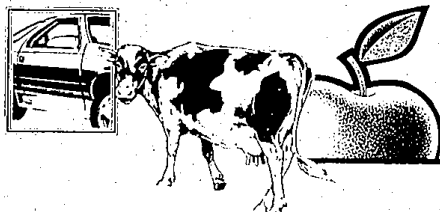
Dawn 'til Dusk

46555 Port St., Dept. Public Service Bldg.  
453-8131

Newspapers, glass (clear, green, brown), tin, aluminum, plastics coded '1' and '2'.

St

**Note:** We have made every effort to verify this information. If you have any additions or deletions, please call our Promotions Department, 591-2300, extension 441.



**What do an apple, a cow, and a car door have in common?**

Recycled newspapers play a role in all three. Apple growers in the northwestern use recycled newsprint for packing, farmers use it for bedding instead of straw and auto manufacturers use it in car doors.

There are many uses for your used newspapers, why not start saving them today?