

# Household duties planned at butler's desk

**Q:** Please evaluate my unusual desk. The top drawer drops down to provide a writing surface, but you have to stand up to use it. The wood is tiger maple; the columns are full round and are separate from the sides.

**A:** This is a butler's desk, where the household duties were planned. It is in the Empire style; it was made about 1830 to 1840 and would probably sell for \$800-\$900.

**Q:** The enclosed mark is on the back of a porcelain cake plate. It is 11 inches in diameter and decorated with hand-painted fruit. Can you identify the maker? When was made and how much is it worth?

**A:** This mark was used by the Hutschenreuther porcelain factory

in Selb, Germany, during the late 19th century. Your cake plate would probably sell for about \$65-\$75.

**Q:** I have a very old Bible (1795) in excellent condition. It was published in Edinburgh by Mark and Charles Kerr, His Majesty's Printers. It was translated out of the original tongues. I would appreciate anything you can tell me about its value.

**A:** First, it must be understood that there were more Bibles printed than all other books combined; old Bibles are not rare.

Bibles like yours, which is about 200 years old, commonly sell for \$100-\$200 in very good condition. There are exceptions, such as those illustrated by famous artists like Gustave Dore.



## antique or junkie

James G. McCollam

**Q:** Someone told me that old beer cans are collectibles. Is that true? I found one labeled "Red Top Ale." It has a cone top and takes the kind of cap that used to come on pop bottles. Does this have any value?

**A:** There are lots of old beer cans that are worth very little. Some, like your cone-top can, are valuable. There were exceptions in the mid-1930s and were used for only a few years. Your Red Top Ale can would

probably sell for \$50-\$60 in good condition.

**Q:** Is there any significance to an English Royal Doulton mug commemorating the marriage of the present Queen Elizabeth II. The mug would probably sell for at least \$200.

**A:** This was the marriage of the later King George V and Queen Mary, the grandparents of the present Queen Elizabeth II. The mug would probably sell for at least \$200.

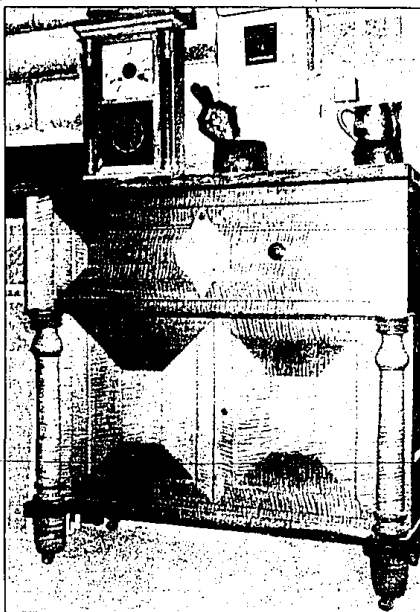
### BOOK REVIEW:

"The Antiques Trader Antiques and Collectibles Price Guide," edited by Kyle Huston, The Bahka Publishing Co., P.O. Box 1050, Dubuque, Ia 52001, \$12.95 plus \$1 postage.

Here we have the seventh edition of the famous price guide with 900 pages of 1,500 photos and 65,000 items, all described and priced. It is one of the most useful books of its kind.

Send your questions about antiques with pictures, a detailed description, a stamped, self-addressed envelope and \$1 per item to James G. McCollam, P.O. Box 1087, Notre Dame, In. 46556. All questions will be answered but published pictures cannot be returned.

James G. McCollam is a member of the Antique Appraisers Association of America.



You have to stand to use this butler's desk's writing surface.

## Gift passes on sale for flower show

The University of Michigan's Matthaei Botanical Gardens offers gift certificates to the 1991 Ann Arbor Flower and Garden Show.

The show will run Thursday-Sunday, April 11-14 at Yost Ice Arena, Ann Arbor. "A Gardener's Holiday" will be the theme. International travel, seasonal celebrations and festivals will be expressed in the exhibits.

Each gift certificate is redeemable for a show ticket that allows selection of a preferred viewing date and time. "Timed tickets are a new innovation that will limit the amount of people at the show at one time."

Gift certificates are redeemable for tickets at the Michigan Union Ticket Office and can be exchanged

either by mail or in person.

Show gift certificates are for sale at the Matthaei Botanical Gardens, 1800 N. Dixboro, Ann Arbor. Each gift certificate costs \$8 and comes with a brochure that gives detailed information about the show. The certificate and brochure fit easily inside a greeting card.

The gardens also offer tickets to the show's opening night gala 7-9 p.m. Wednesday, April 10. Guests may enjoy champagne and hors d'oeuvres as they browse. Landscape designers will be on hand to answer questions about major exhibits. Gala tickets are \$25.

After buying gift certificates and gala tickets for family and friends, don't forget to treat yourself. Admission to the show is \$8 for adults and

\$6 for children 12 and younger. Tickets will designate specific dates and time period, to visit the event.

Advance tickets guarantee immediate entry; those who buy tickets at the gate risk long lines and the chance of sold-out days and time periods.

Tickets are available at the Michigan Union Ticket Office, all Ticketmaster outlets and at Hudson's department stores. To order by telephone, call 763-TEXTS (Ann Arbor area), or 423-6666 (Detroit metro area).

Tickets to the opening night gala are available only at the "Botanical" Gardens. Note that in the interest of public safety, strollers will not be permitted inside Yost Ice Arena during the show.

## The Prudential Great Lakes Realty



## Presents...Fine Homes

Wishing you  
a safe and  
happy  
New Year!



**EVERY DETAIL IS OF THE FINEST QUALITY!** Newly constructed transitional home presents all the amenities for a lavish lifestyle. Offers 2 story entry and family room, pickled oak woodwork, 2 fireplaces, gourmet island kitchen, formal dining room, elegant master suite with jacuzzi, walk-out lower level and 3 car garage. \$399,550 626-9100 02-B-4924



**SATISFIES ANY HEART'S DESIRE!** Nestled on prime lot with front lawn this gorgeous home showcases formal dining room with antique brass chandelier, library with cherry wood bookcases, 5 bedrooms, finished lower level, state foyer and family room with fireplace. \$248,000 689-8900 05-B-4474



**EXECUTIVE DREAM HOME!** Elegant custom Tudor has a contemporary flair. Presents dramatic 2 story ceramic foyer and circular staircase, whitewashed woodwork, sun room off great room with gorgeous fireplace, 4 bedrooms, lower level with wet bar and multi-level deck. Magnificent extras! \$299,000 626-9100 02-B-5018



**FABULOUS!** Dramatic Contemporary is nestled on a park-like setting surrounded by higher priced homes. Highlights include cathedral ceiling in great room, dining, living and family room, 4 bedrooms and private deck. Must see! \$279,500 626-9100 02-B-4702



**ONE OF THE LARGEST HOMES IN BIRMINGHAM!** Exclusive Contemporary built this huge dream home. Spacious wood kitchen, finished lower level with 2nd entrance, 2 car garage, separate family room with fireplace, formal dining room and great room. Extraordinary! \$429,000 626-9100 02-B-5020



**MAKE YOUR DREAMS COME TRUE!** Custom built, 2 story home with a large lot, finished lower level with 2nd entrance, 2 car garage, separate family room with fireplace, formal dining room and great room. Extraordinary! \$429,000 626-9100 02-B-5020



**MORE FOR YOUR \$\$\$!** Quiet elegance describes this Farmington Hills Colonial. Features hardwood floors in living and dining rooms, country kitchen open to family room with full wall fireplace, large library and 4 bedrooms all with ceiling fans. Private backyard! \$149,500 626-9100 02-B-5020



**A DREAM COME TRUE!** Freshly decorated Colonial is accented by an airy contemporary interior. Features hardwood floors, 4 bedrooms, 1.5 bath, formal living and dining rooms, finished walk-out lower level and more. Set on a picturesque rolling lot that offers privacy in the heart of the city! \$279,900 626-9100 02-B-5220



**MHS' CREAM IS MOVING!** Well maintained Southside home is ready for you to move in! Features lovely fireplace in family room, formal living room, back kitchen, 4th bedroom, dual car garage, kitchen and deck off dining room. Get to be moved! \$129,000 626-9100 01-A-5300



**ONE OF A KIND CHARMER!** One of a kind! This home is located on a large lot with a beautiful view. Features hardwood floors, 4 bedrooms, 1.5 bath, formal living and dining rooms, finished walk-out lower level and more. Set on a picturesque rolling lot that offers privacy in the heart of the city! \$279,900 626-9100 02-B-5220



**A ONE OWNER SPECIAL!** End unit Ranch Condo offers contemporary neutral interior. Sports expansive living room, formal dining room, formal kitchen, 2 bedrooms, full bathroom with huge windows, central air and 2 car garage. Hand-capped equipped! Lease \$1,300 month or \$110,650 626-9100 02-B-4846



**MORE FOR THE MONEY!** Beautifully maintained brick Ranch has been freshly painted inside and out. Features gourmet living room, delightful kitchen, 2 baths and finished basement with gorgeous wood floors and possible 4th bedroom. \$64,900 626-9100 02-B-4726



**START OUT RIGHT!** Sit on spacious double lot of mature trees, this Ranch is perfect for sale! Beautifully finished living room, master suite and 2nd bedroom with access to deck and garden. 4 bedrooms, 2.5 car garage. Working in place to get course and shipping. \$43,900 626-9100 02-B-4846



**ANY BED? ANY BATH? ANY ROOM?** Beautiful 2 story home with a large lot, finished lower level with 2nd entrance, 2 car garage, separate family room with fireplace, formal dining room and great room. Extraordinary! \$429,000 626-9100 02-B-5020

The Prudential  
Great Lakes Realty



**BIRMINGHAM/BLOOMFIELD**  
1520 N. Woodward  
(at Long Lake)  
646-6000  
**ROCHESTER**  
1450 Walton Blvd  
(at Livernois)  
651-8850

**FRANKLIN/FARMINGTON**  
31000 Northwestern Hwy  
(at 13 Mile)  
626-9100  
**RELOCATION OFFICE**  
800-521-4264

**WEST BLOOMFIELD**  
4316 Orchard Lake  
(at Lone Pine)  
851-8100  
**TROY**  
3150 Livernois  
(at Big Beaver)  
689-8900

OPEN MONDAY-FRIDAY 9 a.m.-7 p.m. SATURDAY 9 a.m.-5 p.m. OPEN SUNDAYS

The Prudential and are service marks of The Prudential Insurance Company of America. An Independently Owned and Operated Member of the Prudential Real Estate Affiliate, Inc.