

REAL ESTATE CLASSES - ENROLL NOW
Call Pat Morgan 647-6400
Director of Training

Chamberlain

REALTORS®

SINCE 1948



OPEN SUNDAY 1-4

1300 Light
N. of Long St., W. of Condit

TROY - Exceptionally spacious master suite makes this Chelsea Village Colonial unique. Quality throughout. Finished 3rd floor.
 \$254,777 (C-530) 647-6400
 MARKED BY DOUG & KATHIE



OPEN SUNDAY 1-4

1401 Maple, W. of Adams
N. of Maple, W. of Adams

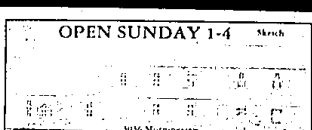
BIRMINGHAM - Poppleton Park. Curv 4 bedroom home with family room. Over 2,600 sq. ft. Family atmosphere. 28 ft. deck off master.
 \$267,500 (H-460) 647-6400
 PRESENTED BY SUSAN RICHMAN



OPEN SUNDAY 1-4

4011 Parkwood
N. of Waverly, W. of Crocker

TROY - Light and stunning 4 bedroom Colonial. Raised fireplace, family room and custom decking.
 \$249,900 (P-407) 641-1660
 MARKED BY GERRY BANISTER



OPEN SUNDAY 1-4

5016 Montague
N. of Maple, E. of Laker

BLOOMFIELD - Home currently being expanded. Seller being transferred. Family room with cathedral ceiling. Master suite being added.
 \$455,000 (M-303) 647-6400
 MARKED BY BOB TAYLOR



OPEN SUNDAY 1-4

401 Maple
S. of Auburn Rd., E. of Rochester

ROCHESTER HILLS - Newer home. Great room with fireplace. Sprinklers, country kitchen, full basement. 2 car garage.
 \$154,900 (M-405) 641-1660
 MARKED BY LINDA WILSON

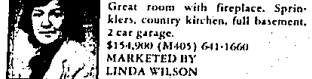
CHAMBERLAIN, REALTORS is seeking special individuals to complement our current outstanding sales staff. YOU might be just such a person. For information about our pre-licensing class, our training program and our 100% EXCLUSIVE PAY PLAN, please call for a confidential interview:
 BIRM. BLOOMFIELD AREA TROY AREA WEST BLOOMFIELD AREA
 NANCY LEAVENWORTH TROY AREA GARY NEWVILLE
 617-6400 611-1600 851-1100



OPEN SUNDAY 1-4

601 Frank
N. of Lincoln, E. of Southfield

BIRMINGHAM - Authentic in-town Dutch Colonial. Hardwood floors, central air, family room, some contemporary styling. Much updating.
 \$277,500 (I-607) 647-6400
 PRESENTED BY MARILYN DAVIS



OPEN SUNDAY 1-4

1011 Orchard Trail
E. of Long St., E. of Adams

TROY - Exceptional home on 1/2 acre lot. 4 bedrooms, family room, den, dining room, central air and first floor laundry.
 \$262,500 (O-289) 647-6400
 PRESENTED BY GRACE STAUFFER

OPEN SUNDAY 1-4
BEVERLY HILLS - 16971 Buckingham, S. of 14 Mile, E. of Southfield. Brick Ranch features 25x24 rec room, updated eat-in kitchen, 2 1/2 car garage.
 \$109,900 (H-169) 647-6400
 MARKED BY MARY ANN McBRIDE

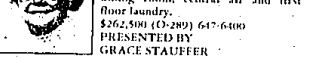


OPEN SUNDAY 1-4

1311 Holland, S. of Maple, E. of Adams

BIRMINGHAM - 1311 Holland, S. of Maple, E. of Adams. Contemporary 3 bedroom. Walkout to town. Ceramic bath and kitchen. Vaulted ceilings, skylights.
 \$122,000 (H-131) 647-6400
 MARKED BY ODDETTE SAHBI

SHOWN BY APPOINTMENT
LAKE ORION - Quality Ranch, 1990 built. Walk-out lower level. On Pointe Creek Golf Course.
 \$194,511 (S-299) 641-1660
 MARKED BY GARY NEWVILLE
ROCHESTER HILLS - 4 bedroom Colonial, 2 1/2 baths, first floor laundry, central air, attached garage.
 \$144,777 (H-1616) 793-1066
 MARKED BY CAROLYN DUTCHER
ROYAL OAK - Lovely 1 bedroom Condo updated and decorated in neutrals. Excellent value.
 \$16,777 (E-201) 647-6400
 MARKED BY DOUG & KATHIE



OPEN SUNDAY 1-4

1011 Orchard Trail
E. of Long St., E. of Adams

TROY - Large contemporary Ranch. Open floor plan, cathedral ceilings, family room.
 \$187,500 (P-42) 641-1660
 MARKED BY FRIDA PETEUIL

SHOWN BY APPOINTMENT
ROYAL OAK - 4 bedroom newer Colonial with 2 1/2 baths, custom kitchen, French doors to deck. Beverly Hills sub.
 \$149,900 (P-402) 547-2000
 MARKED BY JANE GRUFFIN
BIRMINGHAM - Cone Ranch. Perfect for a starter home. 2 bedrooms, full bath and newer windows.
 \$65,777 (C-197) 647-6400
 MARKED BY DOUG & KATHIE
FARMINGTON HILLS - Magnificent 4 bedroom Tudor on lovely setting. Great room, library, jacuzzi.
 \$226,900 (P-392) 851-4400
 MARKED BY JOHN YUGOVICH



OPEN SUNDAY 1-4

1011 Orchard Trail
E. of Long St., E. of Adams

ROCHESTER HILLS - Outstanding first home opportunity!! 3 bedrooms. First floor laundry, decking, air, plus all those extras.
 \$104,900 (C-349) 641-1660
 MARKED BY PAULA PAVLOFF

TROY - Estate Sale! Under priced for quick action!! 2 bedroom Townhouse, basement and garage.
 \$98,900 (K-122) 641-1660
 MARKED BY FRIDA PETEUIL
TROY - Model home with open and spacious floor plan. Full basement and 1 year home warranty.
 \$154,900 (C-294) 647-6400
 MARKED BY REBECCA MEISNER
WEST BLOOMFIELD - Fabulous 4 bedroom Colonial. Extra large kitchen, great room, private setting.
 \$163,900 (S-246) 851-4400
 MARKED BY BARBARA & JOHN



OPEN SUNDAY 1-4

1011 Orchard Trail
E. of Long St., E. of Adams

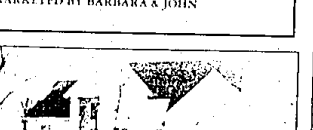
ORCHARD LAKE - Fabulous Contemporary on 1/2 acre treed lot. 3 large bedrooms, 2 fireplaces. Ducking on Orchard Lake.
 \$369,700 (W-316) 851-4400
 MARKED BY CHARLENE CLUGAS



OPEN SUNDAY 1-4

1011 Orchard Trail
E. of Long St., E. of Adams

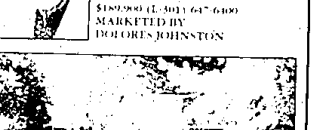
WEST BLOOMFIELD - Bright and airy 4 bedroom Colonial. Great room with fireplace, 2 1/2 baths, island kitchen, unique decking.
 \$229,900 (P-149) 851-4400
 MARKED BY JOHN YUGOVICH



OPEN SUNDAY 1-4

1011 Orchard Trail
E. of Long St., E. of Adams

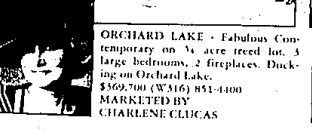
WEST BLOOMFIELD - New construction. Contemporary 4 bedroom home, great room, family room, fireplace, dining room, state of the art kitchen.
 \$172,000 (S-246) 851-4400
 MARKED BY JANE GONZALES



OPEN SUNDAY 1-4

1011 Orchard Trail
E. of Long St., E. of Adams

BIRMINGHAM - Charming Tudor walking distance to town, offers den, formal dining room, 2 car garage and much more.
 \$214,900 (S-179) 647-6400
 PRESENTED BY PEGGY QUISHI



OPEN SUNDAY 1-4

1011 Orchard Trail
E. of Long St., E. of Adams

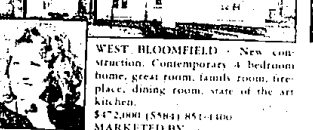
HUNTINGTON WOODS - 3 1/2 bedrooms, 3 1/2 bath Ranch with family room, stone fireplace, glass enclosed three season room.
 \$239,900 (L-275) 547-2000
 MARKED BY MIHA FANTE



OPEN SUNDAY 1-4

1011 Orchard Trail
E. of Long St., E. of Adams

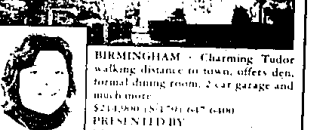
FARMINGTON - This Contemporary home has balcony over scaled great room, oak kitchen and walk-out to deck and garage.
 \$210,800 (E-242) 647-6400
 MARKED BY DAVE & CHRIS



OPEN SUNDAY 1-4

1011 Orchard Trail
E. of Long St., E. of Adams

TROY - Immediate possession of this beautiful Colonial with 4 bedrooms, 2 1/2 baths, family room, formal dining room and library.
 \$229,900 (S-246) 851-4400
 MARKED BY MIKI ALONSO



OPEN SUNDAY 1-4

1011 Orchard Trail
E. of Long St., E. of Adams

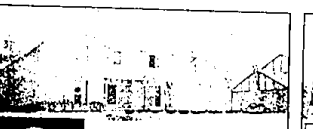
FARMINGTON HILLS - Beautifully decorated! Newer Tudor on cul-de-sac. Fabulous deck, family room, lower level walk out. Natural wetlands.
 \$249,900 (K-351) 647-6400
 MARKED BY DOREA ANDREA



OPEN SUNDAY 1-4

1011 Orchard Trail
E. of Long St., E. of Adams

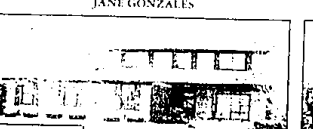
WASHINGTON TWP - 3 bedroom Ranch, formal dining room, 2 fireplaces, partially finished basement, inground pool.
 \$109,900 (S-723) 739-1300
 MARKED BY JANE CRAWFORD



OPEN SUNDAY 1-4

1011 Orchard Trail
E. of Long St., E. of Adams

TROY - Spacious 4 bedroom, 2 1/2 bath brick Colonial in Buckingham Woods Subdivision. Approximately 2,550 sq. ft. Fireplace in family room.
 \$172,900 (K-255) 641-1660
 MARKED BY CHRIS JAMES



OPEN SUNDAY 1-4

1011 Orchard Trail
E. of Long St., E. of Adams

BLOOMFIELD - Enjoy Wing Lake access with this cheerful 3 bedroom Ranch. Bloomfield schools, roof new in 1990 and home warranty.
 \$170,800 (T-655) 647-6400
 MARKED BY ELLEN NEWVILLE



OPEN SUNDAY 1-4

1011 Orchard Trail
E. of Long St., E. of Adams

WEST BLOOMFIELD - Walnut Lake privileges. Beautiful view from master bedroom. 3 1/2 baths, new decor, spiral staircase, finished walk out.
 \$215,000 (P-318) 851-4400
 MARKED BY BETTY & GEORGE

BIRMINGHAM
 647-6400

TROY
 641-1660

BLOOMFIELD
 647-6400

ROCHESTER/UTICA
 739-1300

ROYAL OAK
 547-2000

WEST BLOOMFIELD
 851-4400

A Member Of
The Travelers
 Realty Network®

For a career in real estate contact any of the offices above

