

## creative impressions

This column appears regularly. Send news items to: Creative Impressions, Creative Living, 36251 Schoolcraft, Livonia 48150.

### ALL-SERENADE

Conductor Hugh Wolf returns to Detroit to lead the Detroit Symphony Orchestra in an all-serenade program at 8 p.m. Friday, 8:30 p.m. Saturday and 3:30 p.m. Sunday, Feb. 1-3 at Orchestra Hall. Call 633-3700 for tickets.

### CAMERA SHOW

The Detroit Super Camera Show & Model Shoot will be 10 a.m. to 4 p.m. Sunday, Feb. 3, at the Dearborn Inn-Marriott, 20301 Oakwood Blvd. Admission is \$4.

Sixty dealers will display new and used photo equipment, including cameras and lenses and antique and collectible photography. Most of the dealers will be prepared to buy, sell or trade equipment.

Workshops will also be conducted by Allan Lowy, a well-known local fashion photographer. They will include models in studio settings, with special lighting and backdrops. The times of the workshops will be announced at the show. Admission to the workshops is free.

A free shutter check will be offered with admission by Mid-West Camera Repair. Photorama USA will operate a hot line to provide more information: 884-2243.

### FACULTY ARTISTS

To commemorate the bicentennial of Mozart's death, the Michigan Chamber Players of the University of Michigan School of Music will devote an entire program to his music.

This annual faculty artists concert will be at 4 p.m. Sunday, Feb. 3, in Rackham Auditorium, Ann Arbor. Admission is free. Call 764-2538.

### GARDEN WALKS

The Matthaei Botanical Gardens Conservatory is open for docent-led tours at 1 and 2 p.m. each Saturday.

In February, the conservatory theme will be items of affection.

At 2 p.m. Sunday, Feb. 3, docents will lead a tour of what's out there besides trees and shrubs. Dress for the weather: warm, watertight, windproof footwear. No strollers are allowed. The tour will last 90 minutes.

The gardens are at 1800 N. Dixboro, Ann Arbor, a half mile south of Plymouth Road.

### PIANO PARTY

The Steinway Society of Michigan will present "A Piano Party" at 7:30 p.m. Wednesday, Feb. 6, at the Community Center of Farmington-Farmington Hills. The center is at 24705 Farmington Road, north of 16 Mile.

The recital will feature the works of Debussy, Brahms, Chopin and Liszt.

Performer Diane B. Clemente, pianist and teacher, has trained under Violet Tolt and Julia Nevehr. Flavia Varani provided coaching.

Clara received a bachelor of arts degree in piano performance from Mercy College of Detroit. She plans to attend and perform at the International Chamber Music Institute in Munich, Germany, this summer.

Recital admission is \$3 for society members, \$5 for non-members. Wine and cheese will be served. For reservations, call Ann Andrew-King at 427-0040.

### QUILT SHOW

A comprehensive collection of Amish, American Country and newly designed quilts will be exhibited at the 10th annual "To Warm Your Heart" Quilt Show, 9:30 a.m. to 5:30 p.m. Thursday-Saturday, Feb. 7-9, at the Village Barn in Franklin Village.

Sponsored by the Village Barn, the show will feature 100 pieces, including full-size handmade quilts and wall hangings, as well as crib-sized quilts.

Quilt enthusiast Gail Hurn will be available throughout the show to provide information and to suggest ways to preserve and restore quilts.

This year's show will feature the traditional

American Country quilts, characterized by floral prints, and Amish quilts featuring solid colors in deeper tones. The Baltimore pride appliqué quilt, considered to be one of the most difficult and rare designs, will also be on display.

There is no charge for admission to the show; refreshments will be served.

### MEDIA LECTURE

Schoolcraft College will sponsor a six-program series on the media starting 7-9 p.m. Tuesday, Feb. 5.

This series, for practicing writers as well as those who aspire to a career in communications, will feature professionals in the print, broadcast and TV media from the metropolitan area.

Kicking off the series is Neal Shine, publisher of the Detroit Free Press, discussing writing for daily newspapers.

Bob Palmateer of Specs-Howard School of Broadcasting will be the guest speaker Tuesday, Feb. 12. Frank Washington, Detroit bureau chief for Newsweek, will speak about working for a national magazine Tuesday, Feb. 19.

The speakers for the March meetings will be: Harvey Oshinsky, award-winning TV writer, who will talk on the world of television Tuesday, Feb. 26; Steve Barnaby, managing editor for the Observer & Eccentric Newspapers, presenting prerequisites for bi-weekly newspapers Tuesday, March 5; and Bruce Austin, managing editor for Detroit Monthly, discussing writing for a city magazine Tuesday, March 12.

Registration for the class, which is \$95 for all six sessions and \$18 for individual ones, is now under way. Call 462-4448.

Schoolcraft College is at 18600 Haggerty, Livonia.

### DANCE PERFORMANCES

Two of Michigan's premier dance companies will perform together for the first time at Oakland University.

The concert by Harbinger Dance Company and Wellspring Dance Collaborative will be at 8 p.m. Friday, Feb. 8, in Varner Recital Hall, Rochester Hills. It is sponsored by the Department of Music, Theatre and Dance and the College of Arts and Sciences.

Harbinger, the first Michigan dance company to receive a grant from the National Endowment for the Arts, was established in 1970. This will be its first concert at Oakland since it became a resident company last fall.

Laurie Eisenhower, assistant professor of dance, is artistic director of the company. This concert will include a duet choreographed by Shirley Ririe of the Ririe-Woodbury Company of Utah. Two works by Eisenhower will be premiered.

Wellspring, a Kalamazoo touring company of six dancers, was established in 1981 under Cori Terry, artistic director. It is known for its willingness to experiment and take risks with choreography.

Wellspring will perform Terry's "Landslide," a surreal/feminist statement for three women set to the music of Bohuslav Martinu. "Landslide" is a Yiddish word for compatriots. Also on the program will be Terry's "House of Glass." Tickets are \$10 general admission, \$5 for senior citizens and students and \$3 for OU students. For concert information, call 370-3013.

### BAL POLONAIS

The eighth annual Bal Polonais, 8:30 p.m. to 12:30 a.m. Saturday, Feb. 9, at the Detroit Athletic Club, will further the cause of art in the Detroit area.

Proceeds from the ticket sales — \$125 per person, patron \$175, benefactors \$250 — will benefit Michigan Opera Theatre's forthcoming Polish opera presentation and the acquisition of the "Spoon Altar" sculpture by Ursula Karolossyn von Rydysvard for the Detroit Institute of Arts collection.

Zofia Kafarski of Bloomfield Hills is chairman and founder of Bal Polonais of Detroit.

Honorary chairmen for the event are: Kazimierz Dziewanowski, ambassador of the Republic of Poland to the United States; Gov. John Engler;

and Detroit Archbishop Adam Malda.

This traditional dinner dance will include the presentation of debutantes; 17th century Polish court-garbed pages and herald trumpeters; jousting knights in shining armor; and costumed dancers leading the Grand Polonaise.

For information, call 642-2730 or 352-1968.

### MUSIC AUDITIONS

Auditions will take place in Detroit for musical

clans interested in attending the summer season of the Boston University Tanglewood Institute or the Boston University School of Music 2-5 p.m. Friday, Feb. 15, at the Institute of Music and Dance, 200 E. Kirby.

To audition, call Nils Hedberg at 651-7591. Deadline for taped auditions is March 15. For scholarship and application information, call the Tanglewood Institute: 817-353-3386.



## Michigan's Largest Real Estate Company



Call Real Estate One to put Michigan's most successful seller of homes to work for you.

A Member Of GENESIS Realty Network

©Real Estate One Inc. 1991.



### FARMINGTON HILLS

DREAM MATCH? Five years young, slides and back to wooded ravine, full unfinished walkout basement, extra large great room with cathedral ceiling, library, stop-up formal dining, 4 bedrooms.

\$165,000 851-1900



### FARMINGTON HILLS

NOTE THESE FEATURES! Three large bedrooms, 2 1/2 baths, side entry garage, brick all 4 sides, wood deck, central air, quick occupancy. Built in 1985 in a lovely wooded sub.

\$157,500 851-1900



### FARMINGTON HILLS

PRESTIGIOUS Ramblewood galehouse community, 2 bedroom, 2 bath ranch condo. Neutral and fresh. Great extra storage over garage. First time offered.

\$129,000 851-1900



### FARMINGTON HILLS

ENJOY A BEAUTIFUL Country Setting in this ranch only a couple of minutes from I-696 access and shopping. Excellent condition. Super size family room and kitchen. Attached 2 car garage.

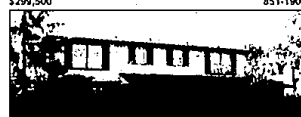
\$95,500 851-1900



### FARMINGTON HILLS

SOARING CEILINGS, open wood staircase, greenhouse, 1st floor master bedroom bath has double access to library with whirlpool tub for two. These are just a few of the glamorous appointments.

\$299,500 851-1900



### SOUTHFIELD

EXCELLENT BUY IN WICKINGHAM VALLEY SUB. 5 bedrooms, 2 1/2 baths, finished basement with study and rec room. Remodeled kitchen, fireplace and indoor BBQ in family room.

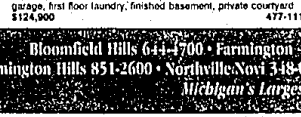
\$129,900 477-1111



### FARMINGTON

NEAR DOWNTOWN CONDO. Secluded, wooded at rear of Wyndel, two bedroom, two and half bath townhouse. Attached garage, first floor laundry, finished basement, private courtyard.

\$124,900 477-1111



### FARMINGTON HILLS

CONTEMPORARY TWO STORY with 4 bedrooms, 2 1/2 baths, formal dining room, family room, library, fireplace, open floor plan, neutral decor, skylights in living room.

\$229,900 477-1111



### SOUTHFIELD

CAPE COD ON LARGE LOT, 3 bedrooms - could be 4. Fenced yard, workshop in garage. Patio for relaxing at the end of the day. No maintenance vinyl siding. Great starter buy at \$45,000.

\$45,000 477-1111



### FARMINGTON HILLS

CROSSWINDS OF FARMINGTON HILLS CONDOS, 2 bedrooms converted to one master suite, walk-in closet, custom-made built-in bedroom outfit, 1 1/2 baths, fireplace, skylights, and appliances.

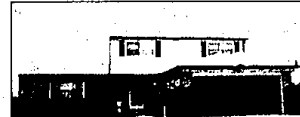
\$96,000 261-0700



### SOUTHFIELD

SPRAWLING RANCH. Very spacious, 3 bedroom brick. Located on over an acre lot. Over 2000 square feet of living, 3 fireplaces and more.

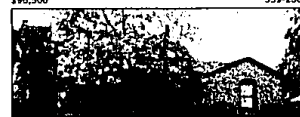
\$115,000 559-2300



### SOUTHFIELD

SPACIOUS 4 BEDROOM! Beautiful brick Colonial with library den on first floor, 2 1/2 baths, finished basement, near schools. Harder carpeting in living and dining room. We are motivated.

\$95,500 559-2300



### FARMINGTON HILLS

WONDERFUL FAMILY HOME. Price of ownership! Lib of curb appeal, 4 bedroom Tudor. Crown moldings, central air, family room, library, 1st floor laundry, sprinklers, large lot.

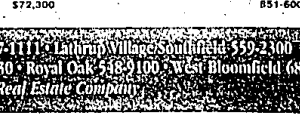
\$217,000 644-4700



### SOUTHFIELD

ALL BRICK RANCH. Bright and airy. Large lot, 2 car garage. Roof 3 years old.

\$72,300 851-6000



## At home Debugging your plant world

Our last topic was the environment in which our plants live. Now it's time to address the problem of little critters that can quickly make owning houseplants a less than happy experience.

Examine your houseplants very closely, for aphids, white flies, springtails, spider mites, mealybugs and scale and treat them now to bring them back to good health.

If the plant growth is stunted or the foliage has begun to curl and become distorted, suspect aphids. These tiny plant lice, either green, red, pink, brown or black are sucking insects that secrete honeydew (a sticky product), which harbors a sooty black mold.

If the leaves have turned yellow and dropped, look for white flies. They look like tiny white moths and are also sucking insects, which fly when disturbed. The larvae, which hatch from eggs laid on the underside of leaves, do the most damage.

Springtails often "spring" up from the soil when it is watered. They usually feed on fungi and decayed vegetation. Sometimes they eat the plants. In this case, good hygiene around the base of the plants is essential.

IF THE leaves have a speckled, mottled appearance, spider mites may be the culprit. They spin fine webs on leaf undersides and multiply quickly in dry air.

Watch the excret. If they become grayish looking, spider mites may be doing the dirty deed.

If you see a cottony mass on leaves or stems, sucking insects known as mealybugs, tiny, crawling, pinkish pests may be present. They seem to prefer the "joint" areas. Dabbling them with an alcohol soaked cotton swab will destroy them.

An irregular pattern of yellowish-green, brown or black spots or blisters on the underside of leaves is caused by scale, tiny oval-shaped insects. On ferns the scale are white.

Swabbing the scale with denatured alcohol will



down to earth  
Marty Figley

control it if caught in time, otherwise the plants will yellow and die.

AND FINALLY, fungus gnats — these are soil-breeding insects that look like tiny black flies, while the larvae look like tiny worms. Look for them on the soil surface and in the top inch of soil.

A gentle washing with warm, soapy water followed with a clear rinse will often take care of most of the problems (other than the cases where alcohol is recommended).

The most conservative approach is always best. When you do need to use pesticides, follow the directions exactly, and use those recommended for the specific insects that you need to control.

Our next subject will be diseases or "burns" your plants may have.

A SPECIAL series of classes to provide an overview on starting and maintaining a plant nursery is being offered in response to numerous inquiries at the County Extension Offices.

The four-part series is scheduled for Feb. 12, 15, 19, and 22, from 9:30 a.m. to 3:30 p.m. at a location near I-75 and US-23. Cost: \$35 each, or \$120 for the series. Lunch and refreshments are included.

For further information, call 858-8887 (Pontiac) or 332-1474 (Farmington Hills). The series will be presented by Mary Wilson, Genesee horticulture agent and Greg Patchen, Oakland horticulture agent.

Marty Figley is a Birmingham-based garden writer.

Bloomfield Hills 644-4700 • Farmington 477-1111 • Lathrup Village/Southfield 559-2300  
Farmington Hills 851-2600 • Northville/Novi 348-6430 • Royal Oak 538-9100 • West Bloomfield 681-5700  
Michigan's Largest Real Estate Company