

Building Scene

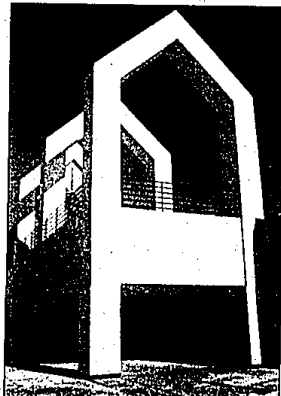
CLASSIFIED ADVERTISING

Marilyn Fitchett editor/591-2300

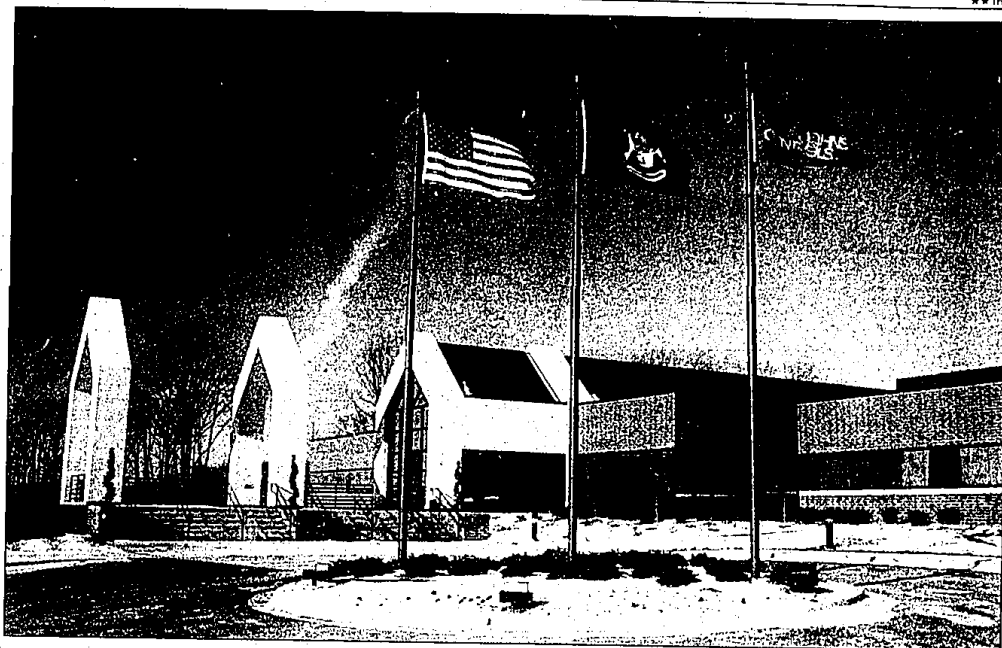


Thursday, January 31, 1991 O&E

★ 1H



Johnson Controls Automotive Systems Group Technology Center in Plymouth features a double arch that accents the center's main entrance. The building was selected by the Construction Association of Michigan as one of 10 winning projects.



Some insiders at the Construction Association of Michigan refer to the process as their Academy Awards — building projects annually selected by the membership as premier examples of quality design and craftsmanship.

All but one of 10 winners this year have a connection with Observer & Eccentric communities.

"We wanted to give some recognition to contractors, subcontractors and suppliers who build projects," Brenda Zimmerman, association spokeswoman, said of the contest.

A nominated project must have been built within the past four years. Both the contractor and architect must be based in Michigan.

Photographs, renderings and models of the winners will be displayed

at the association's annual exposition Feb. 13-14 at the Pontiac Silverdome.

"We purposely have not set qualified or measurable criteria," said James Kostava, chairman of CAM Expo '91. "It really is a subjective thing. Whatever their opinion is — this is an excellent project in Michigan — is good enough for us."

"It's our top award. This is the one award given from the whole broad scope of the industry."

All of the association's more than 3,000 members, plus several hundred architects and engineers were asked to list three projects. Ballots were tabulated, winners announced. Descriptions of the buildings were provided by CAM.

They include:

• BASF Corp., Coatings & Colorants Division, Southfield.

A total of \$43 million was spent on 228,000 square feet of new research and development space, renovation of 45,000 square feet of existing space and a new 332-car parking structure.

The exterior of the building reflects the high-tech image of BASF through a sleek network of smooth, square bricks, ribbons of glass and punched windows. The entrance is accented by a blue-tinted glass curtain wall curving toward the center of the building.

• Philip A. Hart Middle School, Rochester Hills.

This project, 160,000 square feet costing \$13 million, includes class-

rooms, media center, lecture hall, two gyms, cafeteria, special ed facilities and provisions for electronic dissemination of educational information.

Outdoor facilities include a track and field complex, football, baseball, three softball fields and tennis courts.

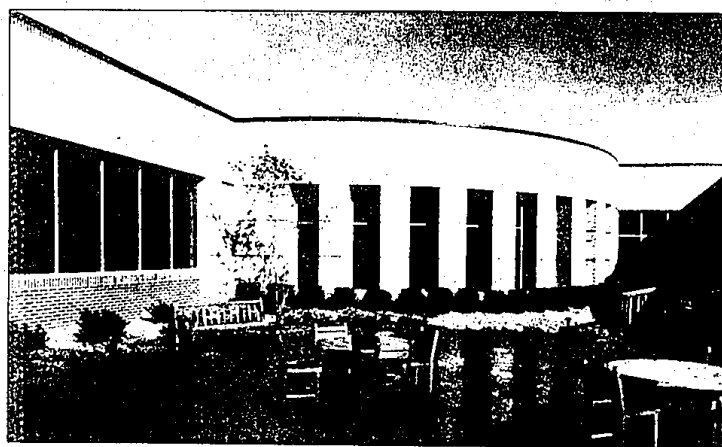
The designer was Roy G. French Associates of Rochester.

• Johnson Controls, Automotive Systems Group Technology Center, Plymouth Township.

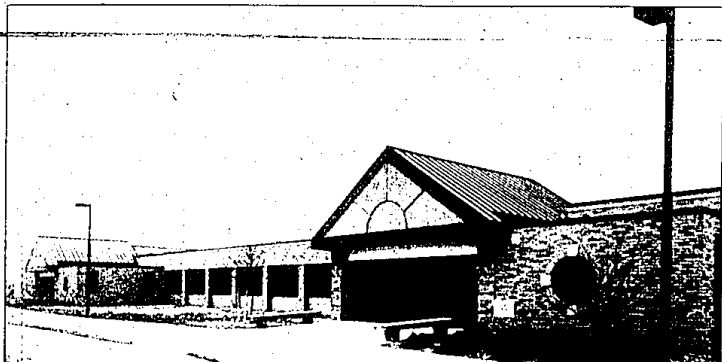
The \$17.1-million, 222,900-square-foot project brings together corporate management, research and development, engineering, marketing

Please turn to Page 3

Construction industry struts local winners



Walsh College's addition earned CAM honors. The exterior features dark accent brick highlighted with composite stone blocks.



Hart Middle School in Rochester Hills was cited for its innovations in educational facility design.

CAPTURE THE BEAUTY Of Oxford Estates In Farmington Hills

The first time you see the luxurious homes of Oxford Estates, situated on the most beautiful wooded site in Farmington Hills, you'll want to capture one for your very own.

This breathtaking site features stately trees, rolling hills and the best nature has to offer. And all the conveniences are located just seconds away, from fine restaurants to great shopping areas to excellent schools. Don't miss your opportunity to own an Oxford Estates home. Capture one today!

Priced From \$289,900.

477-2710

Hours: Open daily 12-5
Closed Thursdays
Or by appointment

Located on Drake Rd. just south of
Mid Rd. FARMINGTON HILLS

Brokers Welcome

ORP
A Picture Perfect Community

Congratulations!
Wendy Pratt
SFA
SALES REPRESENTATIVE
OF THE YEAR
Builder Association of
Southfield, Michigan