

Orchestra unveils capital campaign

By Corinne Abell
staff writer

Friday was opening day for the Birmingham Bloomfield Symphony Orchestra's capital campaign. The immediate goal is to raise \$250,000 in operating money for 1991.

The long-term goals are to develop an endowment fund to provide approximately \$500,000 a year for an enlarged orchestra and administrative staff and to develop a building fund for the projected center for the arts.

At the Jan. 24 kickoff meeting at the Townsend Hotel, campaign chairman L. Brooks Patterson, former Oakland County prosecuting attorney and currently a lawyer in private practice, sounded a bit like a coach speaking to his team before the big game as he spoke of the immediate goal.

"I believe raising \$250,000 is a manageable task because we've got a good product . . . and I truly believe we can meet that goal."

EARLIER. DEVELOPMENT director Jarryl Marlett explained why the number 47 keeps popping up in the campaign vocabulary.

During the course of a season, the orchestra has 5,700 audience seats. The cost to run the orchestra for the 1990-91 season is \$265,902. If each seat was sold for \$47, that would bring in \$267,900, taking the campaign over the mark by almost \$2,000.

Patterson picked up on the \$47 figure.

"There are roughly 60 people here tonight," he said. "If those 60 people asked 100 of their friends for \$47, our goal would be reached

— or 50 couples for \$100 — and we're already over the goal."

He turned to face BISSO president Barbara Diles Zoh.

"It's not gonna take six months, Barbara. It's gonna take 45 days," he said with a confident smile. "I'll commit tonight. I'll sell the first 100 seats for \$47."

MARLETT HAD said earlier that the prime market area for this part of the campaign includes communities such as Pontiac, Bloomfield Township, Bloomfield Hills, West Bloomfield, Farmington Hills, Franklin, Bingham Farms, Beverly Hills, Birmingham, Troy, Huntington Woods and Royal Oak.

The Birmingham Bloomfield Symphony Orchestra, a non-profit corporation, must rely on private financing, he said. The 6 1/2 percent of the budget that came from the Michigan Council for the Arts "has been terminated."

"Thirty-six percent comes from ticket sales, so 3 1/2 of the funding comes from private resources."

He said the \$250,000 capital campaign money will actually be for the next 18 months and cover the yearly shortfall, which runs about \$25,000.

ALLEN SKIBA, who heads the committee for a performing arts center, said it is intended to be "a home base for all the arts" to be convenient for everyone in the county.

He predicted such a structure, unattached to a school or other institution, would help stem the flow of talented people who are leaving this area for a better place to do their work.

What to insure inherited chair for

Q: We inherited this chair recently; it was upholstered about 10 years ago. I would appreciate any information you can provide as to what it should be insured for.

A: This is a Victorian French Revival armchair made in the third quarter of the 19th century. It would probably sell for \$650-\$750.

Q: This mark is on the bottom of a tea set consisting of teapot, sugar and creamer. Each piece is decorated with pink and purple pansies and a lot of gold trim. Please give me your opinion as to the source and value of this set.

A: Your set was made by the Royal Art Pottery Works in Thuringia, Germany, about 1900. It would probably sell for \$125-\$135.

Q: Please provide vintage and value of my pitcher and bowl set marked "Mason's Patent Ironstone, Est. 1780." It is decorated with a red and blue Oriental design. The pitcher is 14 inches tall and the bowl is 18 inches in diameter.

A: Your toilet set was made in Lane Shale, England, by G.M. & C.J. Mason during the mid-19th century. It would probably sell for \$500-\$600 in good condition.

Q: Can you identify the maker of a beer stein marked "RLI"? It holds over three quarts and is decorated with a scene of men drinking in a tavern. I would also like to know its value.

A: Your 3-liter stein was made in Hohl-Grenzhausen, Germany, by the Reinhold Hanke company. It was made about 1900 and would probably sell for \$125-\$135.

Q: I have a Parker Big Red Duofold Senior fountain pen in the original box complete with guarantee and instructions. It was given to my grandfather about 70 years ago

when he graduated from college. I would like to know if this has any special value.

A: It certainly does. The pen you describe is a highly desirable collectible that would probably sell for \$165-\$185.

BOOK REVIEW

"The Dog Made Me Buy It" by Alice Muncester and Ellen Sawyer, Crown Publishers Inc., 201 E. 50th Street, New York, NY 10022, \$12.95 plus \$2 postage, or at your local bookstore.

Here we have over a century of man's best friend as used in advertising everything from tonic to tobacco. You will rediscover RCA Victor's "Nipper" and Buster Brown's "Tige."

If you are too young to remember these lovable canines, it is time you were introduced to them. All illustrations are in brilliant color and a brief text delineates the history of dogs in advertising.

Send your questions about antiques with picture(s), a detailed description, a stamped, self-addressed envelope and \$1 per item to James G. McCollam, P.O. Box 1087, Notre Dame, IN 46556. All questions will be answered but published pictures cannot be returned.

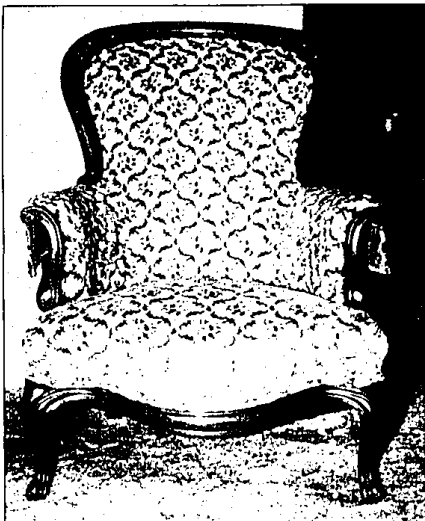
McCollam is a member of the Antique Appraisers Association of America.

This Victorian French Revival armchair would sell for up to \$750.



antique or junkie

James G. McCollam



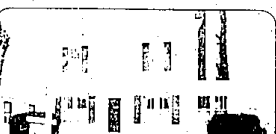
The Prudential Great Lakes Realty



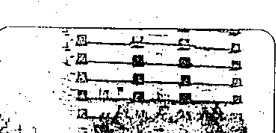
FROM THE PAGES OF HOUSE BEAUTIFUL! Traditional elegance describes this Colonial set on a large stately lot to Orange Lake frontage. Highlights lovely hardwood floors, 2 staircases, updated Euro kitchen, heated Florida room, full living room with bay window, fabulous master suite with 4th fireplace and 3 additional bedrooms. Many specialties throughout! \$575,000 626-9100 02-A-5388



COUNTRY ATMOSPHERE! Newly new West Bloomfield contemporary Ranch offers an open floor plan. Highlights great room with handsome fireplace, spacious kitchen, dining room, 3 bedrooms and 3 1/2 baths. Down level has 2 add to in bedrooms, kitchen and dining area - great as in-law suite! \$274,500 626-9100 02-A-5341



VINEYARD AREA! Charming home is set on a park like setting. Beautiful hardwood floors, updated kitchen and bath, fireplace in living room, 3 bedrooms, dining room and new double rear deck. \$137,000 626-9100 01-A-5212



PENTHOUSE LUXURY! Panoramic views come with this outstanding 1,000 sq. ft. Buick spacious living room with fireplace, 4 bedrooms, 4 full baths, track lighting, neutral decor, formal dining room, 2 living bedrooms and 2 baths. Complex offers pool, gym, tennis and clubhouse. \$44,900 626-9100 02-B-5167



LIKE NEW! Move right into this contemporary Townhouse. Condo. Acorns private entry, beautiful fireplace in living room, lovely dining area with doorway to private patio. 2 bedrooms, full bathroom are just a few of the many features of this beautiful home. \$121,900 626-9100 02-B-5426



QUALITY AND ELEGANCE. Stately Farmington Hills Tudor is loaded with taste. A few extras include heated French doors, crown moldings, hardwood floors and water purification. A total of 6 bedrooms and 3 1/2 baths leaves much room for the unexpected. Gracious size rooms include living room, family and dining rooms and library. \$409,000 626-9100 02-D-5404



OVERFLOWING WITH EXTRAS! West Bloomfield Condo features marble foyer, soaring cathedral ceilings, skylights, track lighting, bay windows, dogwalks and glass floor coverings. Rooms include oversized living room, Euro kitchen, finished walk-out, library and deck. \$187,900 626-9100 02-B-5228



LIKE NEW! Neutrally decorated Ranch Condo offers beautiful and spacious living in quietest community. Two large bedrooms, master suite has private bath and walk in closet. Ceramic tile floors throughout, cathedral ceilings, maple free place and attached garage are just a few of the many features of this beautiful home. \$121,900 626-9100 02-B-5426



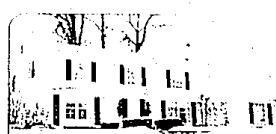
LIKE NEW! Move right into this contemporary Townhouse Condo. Acorns private entry, beautiful fireplace in living room, lovely dining area with doorway to private patio. 2 bedrooms, full bathroom are just a few of the many features of this beautiful home. \$121,900 626-9100 02-B-5426



LIKE NEW! Move right into this contemporary Townhouse Condo. Acorns private entry, beautiful fireplace in living room, lovely dining area with doorway to private patio. 2 bedrooms, full bathroom are just a few of the many features of this beautiful home. \$121,900 626-9100 02-B-5426



LAKE VIEWS. Incredible custom home located on 90 acre springfed Hammond Lake. Enjoy the lake views from the generous size rooms, including 3 bedrooms, living room, dining room and library. Extras include wood floors, 3 zone heating, Andersen windows and sprinkler system. \$299,900 626-9100 02-A-5416



TRANSFERRED DELIGHT! Exquisite West Bloomfield Colonial is situated on a private tree lot. Accents extra large fireplace in great family room, new kitchen with cherry cabinets, 4 bedrooms, dining room and spacious deck. Decorated in neutral! \$181,000 626-9100 02-B-5376



ONE OF A KIND CHARMER! Unique and quaint describes this home located in downtown Farmington's historic district. High lights extensive use of wood paneling and trim, hardwood floors, gracious dining room with Franklin stove, 3 bedrooms, cozy den and family room. \$115,000 626-9100 02-B-5032



HAMBURG RANCHER! One of Bedford's most desirable areas is the location of this brick house. Comes with 3 bedrooms, hardwood floors, fabulous living room, dining room, parlay, finished basement and 2 car garage. Set on double lot with mature trees! \$234,000 626-9100 02-B-5366



FRANKLIN/FARMINGTON! Move right into this first floor brick home. Features include: 3 bedrooms, 2 full bathrooms, finished dining room, living room, track lighting, central air and split air bottom. Offers driveway to garage and custom window treatments. \$41,900 626-9100 02-B-5289



FANTASTIC LOCATION! Stunning Tudor is located in Shattuck Sub of Farmington Hills. Specialties include extensive use of crown moldings, hardwood floors, cathedral ceiling in family room with beautiful brick fireplace and central air. Rooms include 4 bedrooms, library and formal dining room. \$234,000 626-9100 02-B-5426



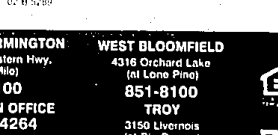
WATERFRONT LOCATION! Stunning executive brick Contemporary is set on a sandy waterfront of Hawk Lake. It is fully finished in new, elegant, yet warm Florida room, updated kitchen, 4 bedrooms and walk out lower level. Home is a gem with a price to match! \$419,000 626-9100 02-B-5327



HOT AREA! Move into this fabulous Ranch and live in one of the hottest areas in the Metro Area! This Ranch features stone fireplace in living room, 4 bedrooms, 2 full bathrooms, Florida room, hardwood floors and a family size bedroom. Includes finished basement with full bath. \$299,900 646-6000 01-B-5037



FRANKLIN/FARMINGTON! Move right into this first floor brick home. Features include: 3 bedrooms, 2 full bathrooms, finished dining room, living room, track lighting, central air and split air bottom. Offers driveway to garage and custom window treatments. \$41,900 626-9100 02-B-5289



FRANKLIN/FARMINGTON! Move right into this first floor brick home. Features include: 3 bedrooms, 2 full bathrooms, finished dining room, living room, track lighting, central air and split air bottom. Offers driveway to garage and custom window treatments. \$41,900 626-9100 02-B-5289

The Prudential Great Lakes Realty

BIRMINGHAM/BLOOMFIELD
1520 N. Woodward (at Long Lake)
626-6000
ROCHESTER
1400 Walton Blvd. (at Livernois)
651-8850
OPEN MONDAY-FRIDAY 9 a.m.-7 p.m. SATURDAY 9 a.m.-5 p.m. OPEN SUNDAYS

FRANKLIN/FARMINGTON
3100 Northwestern Hwy. (at 13 Mile)
626-9100
RELOCATION OFFICE
800-521-4264

WEST BLOOMFIELD
4316 Orchard Lake (at Lone Pine)
851-8100
TROY
3150 Livernois (at Big Beaver)
689-8900

OPEN MONDAY-FRIDAY 9 a.m.-7 p.m. SATURDAY 9 a.m.-5 p.m. OPEN SUNDAYS

The Prudential and are service marks of The Prudential Insurance Company of America.
An Independently Owned and Operated Member of The Prudential Real Estate Affiliates, Inc.