

Gypsy Moth Menace Moving West

The gypsy moth is a pest that eats leaves. Repeated defoliations will kill trees, thereby polluting and even destroying entire forests. During 1970, gypsy moths defoliated nearly 800,000 acres of woodlands in eight Northeastern States.

This more than tripled the acreage defoliated in 1969 and was six times more damage than in 1968.

The gypsy moth is a foreign pest that became established in the United States after several specimens escaped from a Massachusetts naturalist. At present, the entire states of Connecticut, Massachusetts, and Rhode Island are infested, along with parts of New Hampshire, Vermont, New Jersey, Maine, New York, and Pennsylvania.

The trapping of numerous moth moths in Delaware, Maryland, and Virginia this

summer indicates that the pest is becoming established in these states.

The gypsy moth creates damage on such a large scale that it is actually an "environmental pollutant." A single two-inch caterpillar eats one square foot of leaf surface every 24 hours. Large infestations (which contain millions of caterpillars) can easily strip the foliage from an entire forest in a few weeks.

Repeated defoliations will destroy a forest. Dead trees increase fire-hazards, permit soil erosion and the runoff of precious water. Shelter and food for wildlife are destroyed and land and recreation values drastically reduced.

IN RECENT YEARS, pest population buildups and spread have greatly increased direct confrontations between hungry caterpillars and the nonrural public. This

past summer gypsy moth caterpillars invaded numerous small towns and city suburbs. The pest defoliated and killed ornamental shrubs and trees on homesites and city parks, covered sidewalks with their squirming red and blue-poka-dotted bodies, and got into homes, pools, stores, and other buildings.

"We are in a state of emergency," one resident of Shirley, N.Y., told the New York Times. "Our children cannot go out. Our pools are finished for the summer. It's a question of survival—the caterpillars or us."

The U.S. Department of Agriculture has long placed the gypsy moth high on its list of pests that should and must be controlled. Until 1958, USDA officials had hoped to eradicate the gypsy moth from the United States

through the use of large-scale spraying with DDT.

Concern over the possibility of environmental contamination from DDT residues resulted in a switch to limited applications with carbaryl (Sevin). This insecticide breaks down quicker than DDT and is low in toxicity to humans and to birds, fish, and other wildlife. But carbaryl is not as effective as DDT.

IN ADDITION to the use of nonpersistent carbaryl, USDA combats the gypsy moth by importing foreign parasites and predators of the gypsy moth, staging trials of the sterile-male technique, cooperating in enacting and enforcing rigid Federal-State quarantines, and by conducting intensive detection surveys. The sad fact is that available chemical and biological tools can

not effectively control this destructive pest over widespread areas.

USDA scientists recently isolated, identified and synthesized a powerful sex attractant emitted by the female gypsy moth. Experiments indicate that traps baited with the synthetic may prove to be a powerful weapon against this destructive moth. Large-scale field testing of the attractant-

named disparlure—will begin this coming summer.

Gypsy moths have found a particularly favorable environment in the woodlands of New Jersey and Pennsylvania. Damage and explosive population buildups have quickly followed the natural spread of the gypsy moth into these States. Thus far, most of the defoliation has been to noncommercial forest land and parks and to ornamental and shade trees on private land. If the moths continue to spread and become established in the commercial forests of the Appalachian and Ozark Mountain ranges, the economic and aesthetic loss could be tremendous.

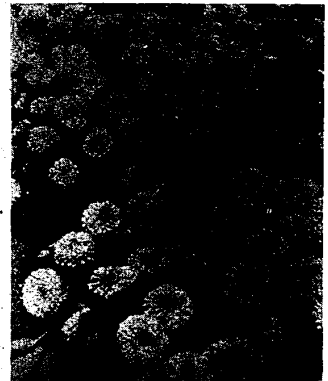
FEMALE GYPSY moths cannot fly a long distance spread generally results from the pest's hitchhiking with man or his goods.

At present, Federal-State cooperative quarantines restrict the movement from infested areas of timber products, woody plants, stone and quarry products, and other articles that might spread female moths, their eggs or caterpillars.

The main source of spread today is the movement of mobile homes, camping trailers, and recreational vehicles. Female moths attach their eggs masses—each containing from 100 to 1,000 potential pests—to trailers, cars, camping equipment, trees, rocks, logs, and other stationary objects.

It is extremely important, therefore, that every camper examine his gear and remove and destroy any gypsy moth egg masses he might find before moving to a new location or returning home.

In 1970, USDA inspectors discovered that trailers from an infested camp in Connecticut had carried gypsy moth egg masses to Minnesota, Wisconsin, Virginia, Texas, and Florida. The egg masses were destroyed before they hatched.



TWO PRETTY, pert little zinnias, Peter Pan Pink and Peter Pan Plum, are both gold medal winners for 1971. Plant them together in your garden for an outstanding show.

Townhouse Opening In Canton

"The Willows," a cooperative community of 1-3 bedroom townhouses in the moderate price range, will have a grand opening next weekend in Canton Township.

The Willows is located at 409 Canterbury Circle, off Haggerty Rd. between Ford and Cherry Hill roads. Models are open every day but Thursday.

Developer is Bert L. Smoker, one of the country's largest builders of townhouses.

Designed for young families, limited-income families and apartment dwellers, the Willows has monthly rents as low as \$117 for those who qualify under the U.S. Dept. of Housing and Urban Development's 236 program.

The development is in the Plymouth School District. All units have private front and rear entrances at ground level, a full basement and an upstairs. An association handles grounds-keeping, utility repair and exterior maintenance.

Owl's Eyes

Owls differ from most birds in that their eyes face forward, giving them binocular vision; other birds must scrutinize an object with one eye at a time.

Peter Pan Twins Brighten A Garden

Two little zinnias have broken a record! For the almost 40 years that All-America Selections has operated test gardens in many states and several countries, that judges have observed and scored thousands of entries in the trial, none has received so high a score as Peter Pan Pink and Peter Pan Plum. Both are gold medal winners.

Their dwarf, they're decorative and they're delightful.

Except for flower color they are twins-dwarf, bushy, very early to start blooming, free-flowering all summer and "self-cleaning" because the new leaves cover the older flowers. Both are first generation hybrids, grow from 10 to 12 inches tall, have blooms from three to four inches in diameter and start to blossom when only 6 inches high.

Even their colors contrast beautifully although you'd never guess it from the written description. Peter Pan Pink has coral pink blossoms which become two-toned as they age; salmon-rose in the center while the outer petals retain their coral pink hue.

PETER PAN PLUM, striking when planted with Peter Pan Pink, has flowers described variously as lavender-rose or rosy purple, in other words, a believable color.

Petals of flowers of both varieties are slightly curled and the flower forms, vary from plant to plant; some are cactus type with pointed petals, some resemble dahlias in their fullness and others have flatish blooms.

Here are two zinnias that will perform well in pots or planters, may be massed in beds or borders or even used as hedges. To see them is to wish you had them in your garden.

So order seeds early for the supply of seeds of All-America Selections winners never is enough to go around.

PRE-SEASON SPECIAL ORDER NOW FOR MAY INSTALLATION
RECEIVE FREE! • HEATER • SPRING BOARD • CURVED SLIDE

ACTUAL PHOTO OF AQUA STAR POOL

AQUA STAR POOLS
 America's Finest On-Ground Pool

ALL NECESSARY ACCESSORIES INCLUDED

The only pool completely installed, including electrical. Never requires painting - aluminum sliding - all puredwood fence, pre-stained and sealed with walk around deck, carpeted 8 foot patio, 4" heavy gauge aluminum coping. Standard on all 12 sizes from which to choose. Save money - enjoy year around fun - swim and skate on the strongest and most beautiful pool made. You furnish only the water.

AVOID POLLUTION - TRAFFIC HAZARDS - CROWDED BEACHES.
 Enjoy healthy family fun with your own private RECREATION CENTER

SEE OUR DISPLAY AT 28875 101st AVE. S. #1000, BENTON, MN.

PHONE 425-9830 • BANK TERM

COMPLETE LINE OF LUMBER BUILDING MATERIALS

VINYL PANELING ON MAHOGANY
 4' x 7' Now \$4.97 4' x 8' Now \$5.97

Excelsior Walnut
 Cajun Pecan
 Winter Elm
 English Chestnut
 Coventry Birch
 Scotch Heather
 Delaware Walnut
 Colonial Pecan
 Golden Walnut
 Wormy Chestnut
 Kilmarnock Teak

PARTICLE BOARD
 PERFECT FOR TRAINBOARD, SUBFLOOR CABINETS, ETC.

4x8x1/4	\$2.59
4x8x3/8	\$2.69
4x8x1/2	\$2.89
4x8x5/8	\$3.29
4x8x3/4	\$5.79

VANITIES
 18" Deep
 22" Wide
 Special
 SALE \$49.95

Choice of White or Walnut Grain

DECORATOR PANELS
 2x6' Reg. \$7.95 SALE \$6.95
 2x4' Reg. \$3.95 SALE \$2.95

ROOM DIVIDER KITS
 Reg. \$12.00 SALE \$10.95

Many colors and patterns to select from. Buy now and save!

2x4x7	46"
2x4x8	57"
2x3x7	58"
2x3x8	65"

Construction Std. KD. White-woods, C. & C.

BIRCH PLYWOOD
 CABINET GRADE
 4x8x3/4 A2
 \$13.95

Cash & Carry

Save \$\$ at - PINE LUMBER CASHWAY

Buy from a FULL LINE Lumber Dealer

SPECIAL OF THE WEEK
 PERMANENT Wipe Clean WALL PANELS FOR A LIFETIME OF Beauty

4x8' sheets Reg. 9.98 SALE \$7.98

7 colors Moulding that simulates the job. \$1.25

4x8x1/4 PURE VINYL ON HARDBOARD
 Four Unusual Patterns to Choose From. Ideal for Half or Full Wall. Reg. 7.99 NOW ON SALE! \$6.98

Matching Mouldings Available

8-SQ. FT. Package Reg. \$2.97 SALE \$2.22

- 12"x24"x1/2" Thick
- Decorates insulates
- Sound proofs
- E.Z. to Apply

Cash & Carry

EXOTIC INDIAN ROSEWOOD SUPER PANEL SALE
 Fabulous Prefinished Print on Mahogany to give the appearance of high priced panels at a budget price.

SIZE 4'x8' REG. 5.97 SALE \$4.97 C&C

REAL WOOD PANELING

- HONEY BIRCH 6.95
- PATIO BIRCH 6.95
- QUARTZ MARINE BIRCH 6.95
- VINTAGE 7.97
- DISTRESSED BIRCH 6.95
- WALNUTONE BIRCH 6.95
- KNOTTY CEDAR 7.97
- PECKY TSUGA 7.27
- BARN GRAY 7.27
- PECKY TSUGA 7.27
- GOLDEN 8.67
- VINTAGE OAK 8.67

Cash & Carry

DRYWALL
 4'x8'x3/8" \$149 C&C
 4'x8'x1/2" \$179 C&C

PHILIPPINE MAHG. PANELS
 4' x 8' x 1/4" \$395 ea.

Ideal for underlayment FIRST QUALITY-NO GROOVES

Budget Priced PANELS
 PRE-FINISHED LAUAN LIGHT OR DARK FINISH \$277 \$359

4'x7' 4'x8'

Ideal for Basements and Rec. Rooms. Cash & Carry

COLOR PANELS
 SIZE 4x8x1/4 4 colors \$7.97 ea.

- Golden Line, Look as the Fruit.
- Blue Sunset, Blue as Blue Sky.
- Buttercup Yellow, like the Texas National Flower.
- E.Z. to Apply
- Flame Red, Will warm Your Heart

Cash & Carry

ambriCo GENUINE BRICK
 1/2 Kila Dried Claybrick

REAL WOOD PANELS
 4x8x1/4" Thick \$9.97

- Washington Cherry
- Georgian Pecan
- Old Dutch Hickory
- Rustic American Walnut
- Executive Rosewood \$11.97

Enjoy the beauty and elegance of real wood panels in the same price range as many of the imitations or hardboards.

Balsam Apples Are Fun To Grow

The curious, nubby fruits of balsam apple or momordica are rarely seen but are lots of fun to grow. With them you can play guessing games with all your garden visitors.

The vines are tropical and related to the cucumber family. They climb and attach themselves by means of tendrils and balsam apple vines will reach six feet upwards during the growing season, even in the north.

Because they are natives of the tropics, they must be treated as tender annuals and the seeds either started indoors or planted in the garden after all danger of late frost is past.

Balsam apple leaves are from two to four inches wide, handsomely lobed. The flowers which, while not as important as the odd fruits, are still useful for garden color are yellow, darker in the centers.

Even the seeds are interesting - notice them before you plant them. They're flat, greyish or brownish, with scalloped edges.

THESE nubby fruits are known as balsam apples.

So order seeds early for the supply of seeds of All-America Selections winners never is enough to go around.

PINE LUMBER CASHWAY

QUALIFIED LUMBER SALESMEN TO SERVE YOU • Charge it on BANK AMERICARD or MASTER CHARGE

LINCOLN PARK 3255 Ford St. 386-6177

GODDARD MERRILL SOUTHFIELD

OPEN THRU. AND FRID. EVENINGS TILL 8 P.M.

SAVE! BUY NOW Johnson AWNINGS AT WINTER PRICES for Spring Delivery!

OUR 78th YEAR YOUR GUARANTEE OF COMPLETE SATISFACTION

NEW 1971 VINYL COATED FABRICS Free Estimate EASY TERMS 825-8200 NO PAYMENT, TILL NEXT SPRING

THE JOHN JOHNSON CO. We Serve Your Community