

achievers

EDWARD HENDERSON, LARRY VIRTUE, BENJAMIN WANG AND ABOLHASSAN KHOSROVANEH of Farmington Hills were named to the faculty at Lawrence Technological University. They will be lecturers in the University's College of Engineering.

JEAN CAVA, of Farmington Hills, an institution social work technician with the state the Department of Mental Health, received \$1,000 for her idea to install "Foreign Exchange" telephone lines at Northville Regional Psychiatric Hospital to minimize long distance costs. The department adopted this suggestion.

JOHN GALLAGHER a native of Farmington Hills, received the Achievers' Club award from AT&T General Business Systems, a small business customer support organization. He is an AT&T account executive who caters to customers needing business telecommunications systems requiring from two to 10 phones. He also represents a complete line of fax and data equipment for small business application.

SOL ROSSMAN, an associate professor of Romance languages, was elected to a three-year term as a member-at-large of Wayne State University's Academic Senate. A resident of Farmington Hills, his term will begin in September.



Rebecca Ann Pietti



Dennis Tini

Muscle professor DENNIS TINI of Wayne State University has been invited to preside at the European conference of the International Association of Jazz Educators in the Netherlands and Switzerland. He is a resident of Farmington Hills.

REBECCA ANN PIETTI, daughter of Paul and Virginia Pietti of Farmington Hills, completed the Federal Aviation Administration's nine-week Air Traffic Controller basic course at the FAA Academy.

Before coming to the Mike Monroney Aeronautical Center in Oklahoma City, Pietti passed stringent written and physical examinations under civil service. Normally, only 60 percent of students complete the intense course, which teaches air traffic procedures and handling of large and small aircraft in the nation's airspace system.

KEVIN GROMLEY, of Farmington Hills, was promoted to senior manager in the management consulting department at the Detroit office of Deloitte & Touche. His specialties include troubled-company turnaround and restructuring, and operations improvements. He has served clients in the manufacturing, basic metals and retail industries.

RAYMOND BOLOGNA, son of Mr. and Mrs. Oreste Bologna of Farmington Hills, was awarded the CRE (Counselor of Real Estate) designation by the American Society of Real Estate Counselors. This designation is awarded only to professionals who meet the society's stringent requirements. It demands that a member have years of proven experience and personal recommendations from past clients.

'Jest for Fun of It' seminar scheduled

"Jest for the Fun of It," a seminar for caregivers, will be hosted April 25 by St. Joseph Mercy Hospital-Pontiac in observance of Pastoral Care Day. Speakers will discuss the power of humor in healing.

The day will begin with a continental breakfast at 7:45 a.m. At 8:50 a.m. presenter Ted Braude a Royal Oak psychologist, will lead a session on "Humor in Health Producing." A second session, "How to Use Humor to Promote Health," begins at 10:20 a.m.

Lunch-time speaker is Rabbi Richard Welts, author of "Sick Jokes." The seminar adjourns at 1:30 p.m.

Those who care for the physical, psychological and spiritual needs of those who are ill are invited to attend to learn how humor plays a part in the healing process. The cost is \$10 and includes conference, continental breakfast and lunch. Pre-registration is required by April 19. For more information or to register call 858-3710.

Arthritis Today

Joseph J. Weiss, M.D. Rheumatology
18829 Farmington Road
Livonia, Michigan 48152
Phone: 478-7860



FOOT PAIN IN RHEUMATOID ARTHRITIS

Foot pain in rheumatoid arthritis occurs when inflammation develops in the front of the foot. This site is vulnerable to irritation because of the stress it must bear.

The full weight of the body plus the forces generated as you step off the ground create a stress on the ball of the foot that equals 4-5 times your body weight. This force is a strain for normal feet, and may become an overwhelming burden for inflamed foot joints.

Foot pain is difficult to manage; medicine can't overcome the effect of inflammation plus mechanical pressure. In addition, the tough skin of the foot makes an accurate injection into foot joints all but impossible. Surgery is a consideration if the long bones of the feet have dropped substantially from their natural alignment with the base of the toes. The surgery is not readily repeated as a great deal of bone is removed, and once gone this bone cannot be replaced.

Your doctor may ask you to accept the pain of foot arthritis and offer little treatment in return. He is not indifference to your discomfort. Rather, delay in intervention reflects the experience that foot surgery may be difficult, its long term success uncertain, and its capacity for revision definitely limited.

SHOWCASE

The Arts

The Farmington Public Schools invite you to join us in celebrating student accomplishments in the arts at this year's *Showcase: The Arts*. This program highlights in depth the creative talents demonstrated by many of our students.

What: **SHOWCASE "The Arts"**

When: **Friday, April 12th 7:00 p.m. - 9:00 p.m.**
Saturday, April 13th 10:00 a.m. - 4:00 p.m.

Where: **Harrison High School Gymnasium**
29995 W. Twelve Mile Rd.

Showcase will include:

Large exhibit hall
Live art demonstrations
Odyssey of the Mind Performances
Drama productions
Technology in the Arts
Vocal and Instrumental Music Performances
Plus much, much more!!!

Performance Schedule

Friday	
7:30	Dunkel Middle School Choir
8:15	Power Middle School Orchestras
Saturday	
10:00	East Middle School Choir
10:30	Kenbrook Sign n' Song
11:00	District 5th Grade Strings
11:30	Highmeadow Hi Notes and Hand Chimes
12:00	Longacre OM Team Bedtime Story
1:00	Hillside Singers
1:50	East Middle School OM Team 6766
2:00	Eagle/Wooddale Chorus
2:30	Community Education Chorus
3:30	Farmington High School String Ensemble

Admission Complimentary

Farmington
PUBLIC SCHOOLS

KROGER HAS YOUR HOME PLATE COVERED WITH LOW PRICES

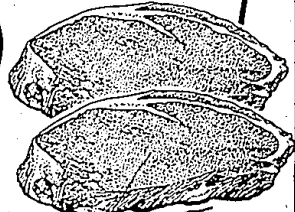
LOWEST PRICE SINCE 1989

U.S.D.A. Choice Beef
Wholesale Cut, Whole, Untrimmed

BONELESS RIB EYES
Pound

\$2.99

SLICED FREE!
SAVE '3.00 lb

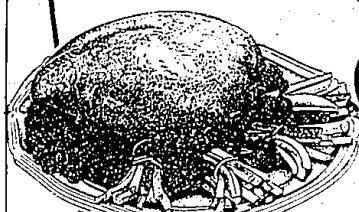


NOTHING BUT THE BEST

U.S. Government Inspected
4 To 7-Pound Average, Frozen

TURKEY BREASTS
Pound

99¢



SUPER SAVER COUPON

301 Springdale
2% LOWFAT MILK
Gallon Jug
\$1.39
Additional Quantities *1.69
Limit 1 With Coupon, Limit 1 Coupon Per Family.
Prices Good Mon. April 8 thru Sat. April 14, 1991.
Subject To Approval State And Local Taxes.

SUPER SAVER COUPON

302 Assorted Varieties
HI-C FRUIT DRINKS
46-Ounce Can
2 \$1
For Additional Quantities 77¢ Each
Limit 2 With Coupon, Limit 1 Coupon Per Family.
Prices Good Mon. April 8 thru Sat. April 14, 1991.
Subject To Approval State And Local Taxes.

SUPER SAVER COUPON

303 Breakfast Cereal
KELLOGG'S RICE KRISPIES
13-Ounce Box
\$1.79
Additional Quantities *1.99
Limit 1 With Coupon, Limit 1 Coupon Per Family.
Prices Good Mon. April 8 thru Sat. April 14, 1991.
Subject To Approval State And Local Taxes.

SUPER SAVER COUPON

304 Caffeine Free Classic Coke,
Diet Coke, Caffeine Free Diet Coke,
Minute Maid Orange Or
COKE CLASSIC
2-Liter Bottle, Plus Deposit
88¢
Additional Quantities *1.09, Plus Deposit
Limit 1 With Coupon, Limit 1 Coupon Per Family.
Prices Good Mon. April 8 thru Sat. April 14, 1991.
Subject To Approval State And Local Taxes.

ADDITIONAL ITEM PRICES WILL REFLECT THE RIGHT TO LIMIT QUANTITIES. These additional items are required to be readily available for sale in each Kroger store, except as specifically noted on the ad. It is the intent of this advertisement to offer you your choice of a comparable item when available reflecting the same savings as a cashback, which will enable you to purchase the advertised item at the lowest price within 10 days. Only one coupon will be accepted per item. Copyright 1991 The Kroger Co. No Sales Tax Deductions.

DOUBLE COUPONS Limited To Manufacturer's Coupons Valued Up To **50¢** See Store For Details

A.P.R.I.L.
MON 8 TUES 9 WED 10 THURS 11 FRI 12 SAT 13 SUN 14