

creative Impressions

This column appears regularly. Send news items to: Creative Impressions, Creative Livonia, 36251 Schoolcraft, Livonia 48150.

DSO POPS

Detroit Symphony Orchestra pops music advisor Erich Kunzel returns for a Weekend Pops Series concert that includes works by Broadway greats Stephen Sondheim, Andrew Lloyd Webber and Leonard Bernstein.

Curtain time is at 8:30 p.m. Friday, April 12, and Saturday, April 13, and at 3:30 p.m. Sunday, April 14.

The program will include soprano Blythe Walker, tenor Mark DuBois, baritone Lewis Dahiel Von Schlabach and the DSO Chorus, Eric Freudenberger, director.

For tickets: 833-3700.

SOPRANO SINGS

Soprano Ely Ameling will perform under the auspices of the University of Michigan's University Musical Society at 8 p.m. Saturday, April 13, in Rackham Auditorium.

Plantist Rudolf Jansen will accompany Ameling in the Chamber Art Series program. Ameling has drawn from the vocal repertoire of German, French and Spanish composers for her concert in Ann Arbor.

For tickets: 764-2538.

Ameling will host a record signing at noon Sunday, April 14, at SKR Classical, 539 E. Liberty, Ann Arbor.

ROMANCE WRITERS

A writing seminar, "Tapping the Source III," will be hosted by the Greater Detroit Chapter of Romance Writers of America, 8 a.m. to 5 p.m. Saturday, April 13, at the McQuinn Hotel, Laurel Park Place, Newburgh and Six Mile, Livonia.

Editors from Zebra Books and Silhouette Books, literary agents and published Michigan authors will critique manuscripts and discuss writing technique, including motivation and research, finding and working with an agent, finding time to write and coping with rejection.

Texas author Sandra Brown, whose novels include the New York Times bestseller "Mirror Image," will sign books at a party hosted by Coopersmith's Bookstore, 5-7 p.m. at Laurel Park Place. Twelve Michigan authors also will be present.

Cost is \$58, including \$12 for lunch. To register, call 254-4053 or 626-8362.

COUNTRY CRAFTS

Homespun Traditions, an old-fashioned country craft show, will be 10 a.m. to 5 p.m. Sunday, April 14, at Laurel Manor, 39000 Schoolcraft, west of Newburgh, Livonia.

Local crafters will include: Susan Hailbeck, Livonia, country home accents; Shari Worth, Northville, reproduction teddy bears; Barb Gentile, Garden City, clay miniatures; Leslie Stolaruk, Plymouth, paper and puzzle jewelry; Faith Tyra, Farmington Hills, country accents.

Admission is \$1.50.

ROSY ENCOUNTER

Friends of Matthaei will sponsor a spring lecture "Older Roses" by Allen Paterson at 1:30 p.m. Sunday, April 14, in the auditorium of the botanical gardens, 1800 N. Diabolo, Ann Arbor.

Paterson is director of the Royal Botanic Gardens, Hamilton, Ont. He'll give a slide presentation on 18th and 19th century roses, which winter well in Michigan. They do not require tying up to maintain their form.

Paterson will identify roses that flower more than once a year and recommend modern roses that mimic the old rose styles.

Seating is limited. Admission is \$3. Friends members will be admitted free.

SHARP SHOOTERS

Photographers of all backgrounds will meet for the giant used camera show and model shoot, Photorama USA, April 13-14 in the Dearborn Civic Center, 15801 Michigan Ave.

Hours are 10 a.m. to 5 p.m. Saturday and 10 a.m. to 4 p.m. Sunday. Admission is \$5.

More than 100 dealers will display new and used as well as basic photo equipment plus antique and collectible photography. Buy, sell or trade.

Workshops on model photography will be offered both days by Allan Lowy, a local fashion photographer. Sessions will include models in studio settings. Mid-West Camera Repair will offer a free shutter check.

The Photorama USA hotline is 884-2242.

The Photorama USA hotline is 884-2242.

The Photorama USA hotline is 884-2242.

The Photorama USA hotline is 884-2242.

The Photorama USA hotline is 884-2242.

The Photorama USA hotline is 884-2242.

Center, 15801 Michigan Ave.

Hours are 10 a.m. to 5 p.m. Saturday and 10 a.m. to 4 p.m. Sunday. Admission is \$5.

More than 100 dealers will display new and used as well as basic photo equipment plus antique and collectible photography. Buy, sell or trade.

Workshops on model photography will be offered both days by Allan Lowy, a local fashion photographer. Sessions will include models in studio settings. Mid-West Camera Repair will offer a free shutter check.

The Photorama USA hotline is 884-2242.

The Photorama USA hotline is 884-2242.

The Photorama USA hotline is 884-2242.

The Photorama USA hotline is 884-2242.

The Photorama USA hotline is 884-2242.

The Photorama USA hotline is 884-2242.

The Photorama USA hotline is 884-2242.

The Photorama USA hotline is 884-2242.

The Photorama USA hotline is 884-2242.

The Photorama USA hotline is 884-2242.

The Photorama USA hotline is 884-2242.

The Photorama USA hotline is 884-2242.

The Photorama USA hotline is 884-2242.

The Photorama USA hotline is 884-2242.

The Photorama USA hotline is 884-2242.

The Photorama USA hotline is 884-2242.

The Photorama USA hotline is 884-2242.

The Photorama USA hotline is 884-2242.

The Photorama USA hotline is 884-2242.

The Photorama USA hotline is 884-2242.

The Photorama USA hotline is 884-2242.

The Photorama USA hotline is 884-2242.

The Photorama USA hotline is 884-2242.

The Photorama USA hotline is 884-2242.

The Photorama USA hotline is 884-2242.

The Photorama USA hotline is 884-2242.

The Photorama USA hotline is 884-2242.

The Photorama USA hotline is 884-2242.

The Photorama USA hotline is 884-2242.

The Photorama USA hotline is 884-2242.

The Photorama USA hotline is 884-2242.

The Photorama USA hotline is 884-2242.

The Photorama USA hotline is 884-2242.

The Photorama USA hotline is 884-2242.

The Photorama USA hotline is 884-2242.

The Photorama USA hotline is 884-2242.

The Photorama USA hotline is 884-2242.

The Photorama USA hotline is 884-2242.

The Photorama USA hotline is 884-2242.

The Photorama USA hotline is 884-2242.

The Photorama USA hotline is 884-2242.

The Photorama USA hotline is 884-2242.

The Photorama USA hotline is 884-2242.

The Photorama USA hotline is 884-2242.

The Photorama USA hotline is 884-2242.

Club, the Detroit Area Art Deco Society and Preservation Wayne. General admission is \$7. A reception and afternoon tea follows each lecture. For more information, call 577-3559.

ARBOR DAY

Ten free shade trees will be given to each person who joins the National Arbor Day Foundation in April.

The free trees are part of the nonprofit foundation's Trees for America campaign.

The shade trees are Red Oak, Weeping Willow, Sugar Maple, Green Ash, Thornless Honeylocust,

Pin Oak, River Birch, Tuliptree, Silver Maple and Red Maple.

They will be shipped postpaid at the right time for planting in April or May with enclosed planting instructions. The six- to 12-inch trees are guaranteed to grow or they will be replaced free.

To become a foundation member and to receive the free trees, send a \$10 membership contribution to Shade Trees, National Arbor Day Foundation, 100 Arbor Ave., Nebraska City, NE 68101 by April 30.

Michigan's Largest Real Estate Company

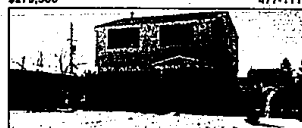


Call Real Estate One to put Michigan's most successful seller of homes to work for you.

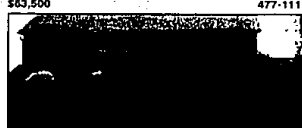
Real Estate One Inc. 1991.



FARMINGTON HILLS
DESIGNED WITH DISTINCTION. 5 bedroom, 3 bath, 4 car garage. Cherry kitchen cabinets, finest carpeting, 2 family rooms. Wooded setting.
\$279,500 477-1111



SOUTHFIELD
NINE MILE AND INKSTER. 3 bedroom with 1 1/2 baths on a corner fenced lot. Full basement, close to freeways and shopping. Side entry detached garage.
\$53,500 477-1111



FARMINGTON HILLS
COLONIAL WITH CONTEMPORARY FLAIR. 4 bedrooms, 2 1/2 baths, formal dining room, family room, library, fireplace, neutral decor, move-in condition & more.
\$219,900 477-1111



FARMINGTON HILLS
OPEN SUN. 2-5. 30810 Ambeth. Brand new on large lot. 3 bedrooms, 2 1/2 baths including master bath. Attached garage on treed lot. Ready for occupancy. Great price.
\$119,900 477-1111



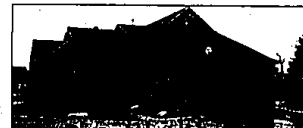
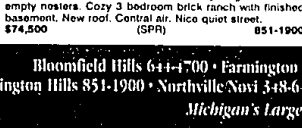
SOUTHFIELD
HANDYMAN INVESTMENT. Great opportunity on this fixer-upper. 4 bedroom house and shed. Lots of potential. Land Contract offers welcome.
\$47,900 851-1900



FARMINGTON HILLS
TRANQUIL & PRIVATE backs to wooded commons. 4 bedroom, 2 story, with full unfinished walkout basement. Built 1986 with all new interior flooring and paint.
\$185,000 851-1900



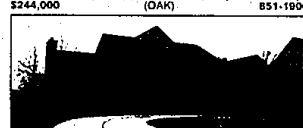
SOUTHFIELD
GREAT HOME & AREA! Perfect for young at heart or empty nesters. Cozy 3 bedroom brick ranch with finished basement. New roof. Central air. Nice quiet street.
\$74,500 851-1900



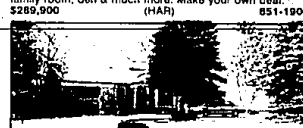
FARMINGTON
LUXURY CONDO. Premium lot, vaulted ceilings, 3 bedrooms, 2 1/2 baths, 2 docks, 2 car attached garage. Neutral decor with quality upgrades throughout.
\$225,000 851-1900 (DUR)



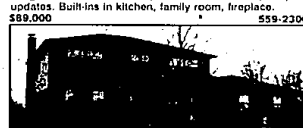
FARMINGTON
GRACIOUS FAMILY LIVING! Lovely center-entry Colonial provides a unique classical period. Sits the imagination & raises your appreciation of quality workmanship.
\$244,000 851-1900 (DAR)



FARMINGTON HILLS
BUILDERS CLOSE-OUT in Hunters Pointe. 4 bedroom, 2 1/2 bath beauty. Formal kitchen, master with whirlpool, family room, den & much more. Make your own deal.
\$289,900 851-1900 (HAR)



SOUTHFIELD
A CHARMING RANCH! Come fall in love with this Birmingham School District spacious Ranch with plenty of updates. Built-ins in kitchen, family room, fireplace.
\$89,000 559-2300



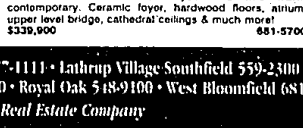
NOVI
TRADITIONAL ELEGANCE. Features 4 large bedrooms, new master suite, 2 1/2 baths, formal living & dining rooms, family room with fireplace, deck, finished basement.
\$210,000 644-4700



SOUTHFIELD
BIRMINGHAM SCHOOLS. 4 bedroom Colonial in Cranbrook Village. 2 1/2 baths. Neutral decor. Newer deck, professional landscaping. Roof 91. Furnace 4 years old.
\$129,900 559-2300



FARMINGTON HILLS
NO WHERE ELSE! Can you find this warm contemporary. Ceramic foyer, hardwood floors, atrium, upper level bridge, cathedral ceilings & much more!
\$339,900 681-5700



Bloomfield Hills 644-4700 • Farmington 477-1111 • Lathrup Village Southfield 559-2300
Farmington Hills 851-1900 • Northville/Novi 348-6430 • Royal Oak 518-9100 • West Bloomfield 681-5700
Michigan's Largest Real Estate Company

down to earth Marty Figley

Companion Plants, 7247 N. Coville Ridge Rd., Dept. M, Athens, Ohio 45701 (call 82) offers seeds as well as plants. Their plants are carefully packed and arrive in top condition.

THE SECOND annual Ann Arbor Flower and Garden Show, sponsored by University of Michigan's Matthaei Botanical Gardens, will be Thursday-Sunday, April 11-14, at Yost Ice Arena. See displays by landscapers and nurseries and floral designs by individuals and clubs.

Exhibits will reflect this year's theme, "A Gardener's Holiday," through motifs of international travel, seasonal celebrations and festivals.

For viewers who want to replicate what they see, the Marketplace will offer an array of gardening tools, plant material, gifts and accessories. It also will feature such items as topiaries, bonsai specimens, house plants, seeds, decorative planters and bulbs.

It is advisable to purchase advance tickets (\$8 for adults, \$6 for children 12 and younger), since tickets will designate dates and the time periods to visit the show so that all will be able to enjoy the exhibits. Although tickets will be available at the gate, advance tickets guarantee immediate entry.

Advance tickets are available at the Michigan Union Ticket Office, all Ticketmaster outlets and Hurd's department stores. Or call 763-7373 (Ann Arbor area) or 645-6666 (Detroit area). For group rates: 761-1300. For more information: 998-7343.

Marty Figley is a certified master gardener based in Birmingham.

Marty Figley is a certified master gardener based in Birmingham.

Marty Figley is a certified master gardener based in Birmingham.

Rookie gardeners

Be deliberate with new plantings

Good garden tip: Confine outdoor chores to picking up debris and edging flower beds until the soil is ready to be worked. Shop for garden tools, weed killers and fertilizers.

If this is the first time you are planting a garden, whether it is for vegetables, herbs or flowers, take caution you to begin on a small scale and plant tried and true varieties.

If the first garden is a success, then future ones will also be. There is always time to experiment with new and unusual varieties as you fine-tune your gardening skills.

Where you place a garden is as important as what you plant in it, perhaps even more so. Well-drained and fertile soil will almost guarantee success. To check drainage, dig a hole a foot deep and let the water drain; the next day, re-fill the hole; if it drains in 6-8 hours, the drainage is good.

Sun is another consideration. Most vegetables and flowers need 6-8 hours of sun a day. If the lot isn't perfectly level, the higher areas will warm up more quickly than the lower areas where the cold air can settle. Be aware that there will be more shade as the trees leaf out.

Remember, a close water source will encourage watering when it is necessary.

IT IS difficult to choose a supplier when ordering seeds and plants through the mail. The Mailorder Association of Nurseries, 8683 Doves Fly Way, Laurel, MD 20707 is offering a booklet "The Complete Guide to Gardening by Mail," which lists suppliers for all types of seeds and plants. Send a dollar to receive it.

Jonny's Selected Seeds, 310 Foss Hill Rd. Alhambra, MN 04910, is offering a free catalog, and suggests some of the following vegetable varieties for good results: green snap beans, Provider, carrot, Scarlet Nantes, cucumber, Marketmore 80, radish, Easter Egg. For flowers: blanket flower, Picta Double Mix; Cosmos, Versailles.

For herb seeds and a neat way to learn their Latin, request a catalog from The Flowery Branch, Dept. M, PO Box 1330, Flowery Branch, GA 30542. Please include \$2, refundable with first order.

For herb seeds and a neat way to learn their Latin, request a catalog from The Flowery Branch, Dept. M, PO Box 1330, Flowery Branch, GA 30542. Please include \$2, refundable with first order.

For herb seeds and a neat way to learn their Latin, request a catalog from The Flowery Branch, Dept. M, PO Box 1330, Flowery Branch, GA 30542. Please include \$2, refundable with first order.

For herb seeds and a neat way to learn their Latin, request a catalog from The Flowery Branch, Dept. M, PO Box 1330, Flowery Branch, GA 30542. Please include \$2, refundable with first order.