

The Prudential Great Lakes Realty

OPEN HOUSE



OPEN SUN. 2-5, 6441 Alden, WB. W. of Hiller, S. of Willow, LAKE LIVING! Sensational Ranch offers frontage and views of Green Lake. Accents walk-out lower level rec room with wet bar, fireplace in living room, master suite with jacuzzi and atium, gourmet kitchen and 3 car garage. \$499,350 851-8100 06-B-5197



OPEN SAT. AND SUN. 1-4, 6019 Carmen Court West, Orchard Lk. S. of Commerce, W. of Hiller. Follow signs. ACCESS TO UPPER STREET! Phenomenal home with first floor master suite with fireplace and spa. Offers library, solarium, dock, 5th bedroom could be large workout room. 4 1/2 baths and a double circular stairway to the upper level. \$425,000 851-6100



OPEN SAT. 2-5, 1405 Ridge Ct., Rochester, Orion onto Galesburg, left on Cedarhill. Magnificent Tudor is located in gorgeous Goodson Hills Sub. Showcases 2 fireplaces, formal dining room, dock, library, master suite and 3 additional bedrooms. Includes security system, wet bar, central air and 3 car garage. \$379,900 851-6850 04-A-8113



OPEN SUN. 1-4, 6521 Parkway, Troy. N. of Square Lk., W. of Coolidge. Private 4 bedroom executive home, backing to Troy's nature center offers great views from the deck, breakfast room and huge family room. Island kitchen, finished basement with fireplace and 3 car garage are only a few of the features of this beautiful home. \$259,800 689-8900



OPEN SUN. 1-4, 3642 Ridgeland Ct. S. of Lone Pine, W. of Middlebelt. Dramatic 4 bedroom Colonial is located on a cul-de-sac and offers the master suite with new bath, dressing area and walk-in closet. Cathedral ceiling and fireplace in the family room, elegant dining room and contemporary island kitchen. \$299,900 646-6000



OPEN SUN. 2-5, 6205 Norham, Bham. N. of Maple, W. of Franklin. A park-like setting for this Bloomfield home. Boasts an open floor plan. Family room with cathedral ceiling, wet bar and pegged oak flooring. Finished walk-out lower level, 4 bedrooms and 3 1/2 baths. Overlooks private pond and has Walnut Lake privileges. \$299,000 646-6000



OPEN SUN. 1-4, Fox Glen Court, WB. S. of 14 Mile, W. of Drake. IMPRESSIVE! Contemporary on a cul-de-sac. Expansive interior showcases 4 bedrooms, 2 1/2 baths, living room with Italian marble fireplace, formal dining room, library and first floor laundry. Kitchen with Sub-Zero and Jenn Air. Ex-quatorial \$288,500 851-6100 06-B-5610



OPEN SUN. 2-5, 4297 Cherry Hills, W. of Orchard Lake, S. off Pontiac Trail. PRICED FOR A QUICK SALE! Orchard Lake Tudor is tucked away on a private treed lot. Features elegant living room, formal dining room, massive family room, library and 4 bedrooms. Offers wet bar, walk-out lower level, island kitchen and 3 car garage. \$289,000 851-8100 06-B-5222



OPEN SUN. 1-4, 6345 Westmoor, Bham. N. off Maple, E. of Inkster. Nestled on 1.3 acres of land with babbling stream is this magnificent Colonial. Almost totally redone interior showcases ceramic foyer, oversized living room, fireplace in family room, 3 downfalls, almost-finished kitchen and 4 bedrooms. \$259,900 851-8100 06-A-5325



OPEN SUN. 1-4, 1936 Mercatello, RH. E. of Old Perch, N. of Walton. MAJESTIC SETTING! Located in Grosse Pines Sub. Among the trees is this beautiful Colonial. Highlights skylights and fireplace in family room. Formal dining and living rooms, breakfast room, 4 bedrooms and library. Recently updated! \$249,900 651-8850 04-A-5104



OPEN SUN. 1-4, 30324 Lana Ct., FH. N. of 9 Mile, W. of Halstead. Freshly decorated 3 bedroom, 2 1/2 bath home. Ceramic tile entry and French doors in the library. Large master bedroom suite with shower and soaker tub. Crown moldings, wet bar and fireplace in living room. New first floor carpeting. \$249,900 626-9100



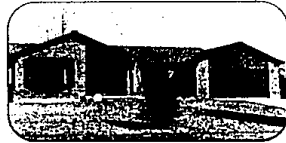
OPEN SUN. 1-4, 6750 High Ridge, WB. W. of Green Lk. Rd., S. of Commerce. TOP OF THE UNEI! Contemporary style admirers will delight in this 3 bedroom home. Showcases first floor master suite with walk-in closet, 2 additional closets, bath with Roman tub and separate shower. Neutral carpet and deck. \$219,900 626-9100 02-B-5492



OPEN SUN. 2-5, 4964 Leesburg, WB. W. of Orchard Lk., S. of Lone Pine Rd. MOVE IN AND ENJOY! Williamsburg Colonial is located in a great family neighborhood with parks. Boasts formal living and dining rooms, library, handsome fireplace in family room, 3 downfalls, almost-finished kitchen and 4 bedrooms. Tastefully decorated with designer flair! \$184,850 851-8100 06-B-0003



OPEN SUN. 2-5, 17659 Dunblaine, Birmingham, S. of 14 Mile, E. of Southfield. Beautifully redone interior features family room with parquet floor, dramatic fireplace wall and downfall to patio. Custom kitchen, hardwood floors, and 3 bedrooms. A must see! \$194,500 646-6000 01-A-5378



OPEN SUN. 1-4, 46210 Eleven Mile, S. of Grand River, W. of Taft. SECLUSION IN NOVI! Stables, barn and room for horses come with this new Ranch set on 5 acres. Features cathedral ceilings and brick fireplace in great room. Dining room, 3 bedrooms, dreamy kitchen and neutral decor with contemporary flair. \$189,900 626-9100 02-B-4962



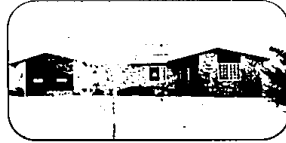
OPEN SUN. 1-4, 5433 Fairway Court, WB. N. of Walnut Lk. Rd., W. of Middlebelt. UNIQUE! Ranch Condo has all the extras. Second large bedroom can be an office or den, 2 full baths and great room with fireplace. New construction offers central air, kitchen appliances, a deck and access to Simpson Lake. \$189,900 626-9100



OPEN SUN. 1-4, 6735 Heatherwood, WB. W. of Green Lk. Rd., S. of Commerce. NEW CONSTRUCTION! Quality built Colonial with ultra sharp features, foyer with oak hardwood floor, carpet throughout, insulated windows, 6 panel doors and full, extra deep basement. Four bedrooms, 2 1/2 baths and fireplace in family room. \$184,900 626-9100



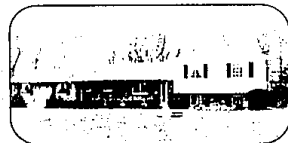
OPEN SUN. 2-5, 840 Drew, Troy. N. of Square Lk., E. of Crooks. This 3 bedroom Contemporary offers beautiful wood floors in the foyer and library, new carpeting in the great room and ceramic tile floor in the kitchen. Atrium doors from the kitchen and great room lead to the new cedar deck. Newly finished basement \$183,800 689-8900



OPEN SUN. 1-4, 791 Bogie Lake Road, White Lake, E. side of Bogie Lake Rd., S. of M59. Canal front home has 3 bedrooms, 2 1/2 baths, Florida room and finished lower level. Fireplaces in the living, family and great rooms will chase away winter blues. Updated kitchen and ceramic foyer. \$182,000 851-8100 06-B-5458



OPEN SUN. 1-4, 2832 Timberwyck, Troy. E. of Adams, S. of Long Lake Rd. SUPER Colonial home offers 4 bedrooms, 2 1/2 baths, formal dining room, breakfast nook and living room with fireplace wall. French doors lead to the deck. Highlights newer shingles, gutters and security system. Central air. \$177,000 646-6000



OPEN Sun. 1-4, 1963 E. Hammond Lk. Dr., BH. READY AND WAITING! Quad-level redecorated in light neutral tones and in move-in condition. Offers new shingles, newer furnace and central air. The interior has 4 bedrooms, 2 1/2 baths, a large kitchen with new wallpaper and flooring. Family room with fireplace. \$149,900 626-9100 02-B-5527



OPEN SUN. 1-4, 3630 W. Bradford E. of Lahser, S. of Maple BLOOMFIELD LIVING WITH BIRMINGHAM SCHOOLS! Sprawling Ranch showcases a spacious living room, updated kitchen open to dining room, 3 bedrooms, central air, 2 car garage and finished basement. Patio overlooks lovely lot with sprinkler system. \$142,000 646-6000 01-A-4878



OPEN SUN. 1-4, 1830 Mare Circle, BH. E. of Middlebelt, S. of Square Lk. Rd. PRIVILEGES on Upper Long Lake. Offers a private setting in Bloomfield Hills. Decor is very neutral and showcases 4 bedrooms, 2 full baths, library, ceramic floor in kitchen and fireplace in the living room. Many recent updates \$138,000 626-9100



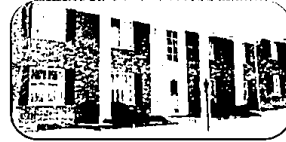
OPEN SUN. 1-4, 2500 London, Troy. E. of John R. S. of Long Lake. Four bedroom Colonial offers gracious living with a formal dining room, family room with fireplace, breakfast nook, first floor laundry and 2 1/2 baths. All window treatments, appliances, great brick patio, gas grill and POOL! \$121,900 689-8900 05-A-5517



OPEN SUN. 2-5, 15823 Kirkshire, BH. S. of 14 Mile, E. of Perce. BEVERLY HILLS! Beautifully redone 3 bedroom Ranch has hardwood floors throughout. Fireplace in living room and a new kitchen with bleached oak cabinetry. Family room with beamed ceiling, gorgeous deck and garage with workshop. MORE! \$108,000 646-6000



OPEN SUN. 1-4, 10757 Shawassee #21, FH. E. of Orchard Lake, S. of 10 Mile. COUNTRY VIEWS! Located in a smaller setting this upper Ranch Condo features 2 bedrooms, large living room, dining room, 2 baths, marble tiles and balcony. Includes beige carpet throughout and central air. \$63,900 626-9100 02-B-4779



OPEN SAT. 1-4, 2375 Mulberry, BH. N. of Square Lk., E. of Woodward. SUPER LOCATION! Great Bloomfield first floor Condo with many appointments. The freshly painted unit features 2 bedrooms, 2 baths, new neutral carpeting and kitchen floor. Ceramic foyer, 2 carports and private basement. Pool and clubhouse \$99,500 646-6000 01-A-5417




OPEN SUN. 1-4, 23505 Plumbrook, Southfield. N. of Nine Mile, E. of Lahser. OPEN AND BRIGHT! Gorgeous tri-level in a quiet area of Southfield. Offers a sunken living room, 3 bedrooms, family room, formal dining room and 1 1/2 baths. Finished walk-out basement. New carpet and paint. Central air. \$94,900 626-9100 02-A-5610

The Prudential Great Lakes Realty



BIRMINGHAM/BLOOMFIELD 1520 N. Woodward (at Long Lake) 646-6000	FRANKLIN/FARMINGTON 3100 Northwestern Hwy (at 13 Mile) 626-9100	WEST BLOOMFIELD 4316 Orchard Lake (at Lone Pine) 851-8100
ROCHESTER 1460 Walton Blvd. (at Livernois) 651-8850	RELOCATION OFFICE 800-521-4264	TROY 3150 Livernois (at Big Beaver) 689-8900
OPEN MONDAY-FRIDAY 9 a.m.-7 p.m. SATURDAY 9 a.m.-5 p.m. OPEN SUNDAYS		

The Prudential and  are service marks of The Prudential Insurance Company of America.
An Independently Owned and Member of The Prudential Real Estate Affiliates, Inc.