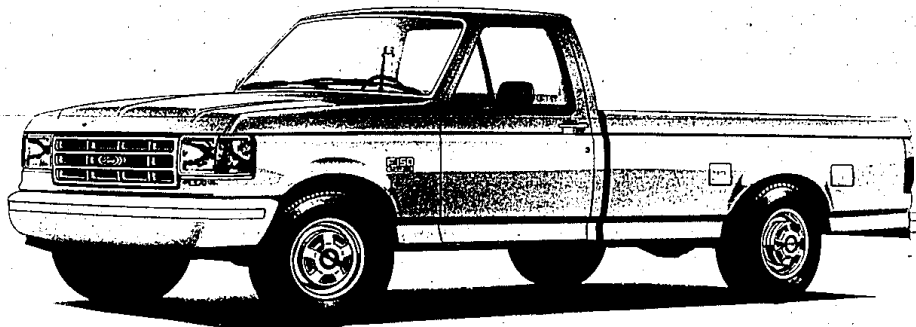



FORD

WE'RE STILL THE #1 FOR LOW PRICES!

Specially Equipped
1991 FORD F-150 S PICKUP
as low as **\$9959.**⁽³⁾

TOTAL VEHICLE PRICE	\$10,859
498A OPTION PACKAGE SAVINGS	- 400 ⁽²⁾
FACTORY CASH BACK	- 500 ⁽¹⁾
MSRP LESS TOTAL SAVINGS \$	9,959 ⁽³⁾



OR GET 7.9% ANNUAL PERCENTAGE RATE FINANCING FOR UP TO 48 MONTHS **OR \$500 CASH BONUS⁽¹⁾**
ON OTHER F-SERIES PICKUPS

OR, GET THIS LOW MONTHLY LEASE PAYMENT!

\$178⁽¹⁾ A MONTH

24-MONTH LEASE INCLUDES USE TAX

...WITH A FORD RED CARPET LEASE PLAN

THE ARITHMETIC:

Monthly Lease Payment	\$ 178.00
Number of Months	24
Cash Down Payment	\$2,700.00
Refundable Security Deposit	\$ 200.00
Total due at Lease Inception	\$3,078.00
Total Amount of Payments	\$4,272.00
Total Mileage Allowed	30,000
Mileage Charge Over 30,000	11¢ per mile

THE TERMS:

- Lessee may have the option to purchase the car at lease end at a price to be negotiated with the dealer at lease inception. However, lessee has no obligation to purchase the car at lease end.
- Lessee is responsible for excess wear and tear and mileage.
- Refundable security deposit, first months' lease payment and cash down payment due at lease signing.
- Lease subject to credit approval and insurability as determined by Ford Credit.



* Lease payment based on Manufacturers' Suggested Retail Price of \$11,055 for a 1991 Ford F-150 S including title, use tax, destination charges and license fees. See your Metro Detroit Ford Dealer for his price and terms. Offer ends 6/4/91.

(1) Cash Bonus from Ford or 7.9% APR financing through Ford Credit for qualified buyers. 48 months at \$24.36 per month per \$1000 financed with 10% down. Dealer participation may affect savings. Take new retail delivery from dealer stock by 6/4/91. See dealer for details. (2) Savings based on manufacturers' suggested retail price of Option Package vs. MSRP of options purchased separately. (3) MSRP excludes tax, title and destination charges. Total vehicle price includes credit of \$116 for single fuel tank option. Dual tanks are standard. See dealer for his price. (4) Total savings based on cash bonus plus option package savings.

Bloomfield Hills
ALAN FORD, INC.
1845 S. Telegraph
943-7070
Canton
BOB THIBODEAU, INC.
26330 Van Dyke
755-7100
Dearborn
FAIRLAKES FORD SALES, INC.
14555 Michigan Avenue
846-5000
Wolverine Truck Sales
3550 Wyoming
849-8800
Village Ford, Inc.
23515 Michigan Avenue
565-3900
Detroit
JORGENSEN FORD, INC.
8133 Michigan Avenue
584-7500

STARK HICKORY WEST, INC.
24760 W. Seven Mile Road
538-6000
RIVERSIDE FORD SALES, INC.
1832 E. Jefferson
567-0250
Farmington Hills
TOM HOLZER FORD, INC.
39300 W. 10 Mile Road
474-1234
Farmdale
ED SCHMIDT FORD, INC.
21600 Woodward Avenue
189-1000
FBI Ross
DICK MCQUISTON FORD, INC.
22675 Gibraltar Road
782-2400
Livonia
BILL BROWN, INC.
32222 Plymouth Road
421-7000

Mt. Clemens
MIKE DORIAN FORD, INC.
35900 Grand Avenue
296-0020
Russ Milne Ford, Inc.
43870 Grand Avenue
293-7000
Northville
MCDONALD FORD SALES, INC.
550 W. Seven Mile Road
349-1400
Oak Park
MEL TARR FORD, INC.
24350 Greenfield
967-3700
Plymouth
BLACKWELL FORD, INC.
41001 Plymouth Road
453-1100



Metro DETROIT'S Quality DEALERS

Pontiac
FLANNERY MOTORS, INC.
5900 Highland Road
356-1260
Redford
PAT MILLIKEN FORD, INC.
8600 Telegraph Road
255-3100
Rochester
HUNTINGTON FORD, INC.
452-1900
Royal Oak
ROYAL OAK FORD, INC.
530 N. Woodward Avenue
548-4800
Southfield
AVIS FORD, INC.
29200 Telegraph Road
353-7500

Southgate
SOUTHGATE FORD, INC.
16600 Ford Street
282-3636
St. Clair Shores
ROY D'ORIE, INC.
22201 Nine Mile Road
776-7600
Stirling Heights
JEROME DUNCAN, INC.
4000 Ford Country Lane
568-7500
Taylor
RAY WHITFIELD, INC.
10725 S. Telegraph Road
291-0100
Troy
TRUY MOTORS, INC.
777 John R.
585-4000

DEAN SELLERS FORD, INC.
2600 W. Maple Road
649-7500
Warren
AL LONG FORD, INC.
13741 E. Eight Mile Road
777-2700
Wayne
JACK BENNER FORD, INC.
37000 Michigan Avenue
721-2600
Westland
NORTH BROTHERS FORD, INC.
33300 Ford Road
421-1300
Woodhaven
GORDON FORD, INC.
22025 Allen Road
676-2200

