

# Burlingame Tribute Garden dedication set Sunday

Mark your calendars! The date is here! You are invited to attend the dedication of the Alice Wessels Burlingame Tribute Garden at the Baldwin Public Library, 300 W. Merrill, south of Maple in Birmingham.

A short ceremony will be 1 p.m. Sunday, Sept. 22, including a proclamation by Mayor Henry C. Forster, to honor Alice.

Many people have made this garden possible, beginning with Barbara Sobey, who came to me with the idea.

Jim Slezinski of Goldner Walsh Nursery Inc. designed the landscape. Al Goldner donated the many day lilies from his personal collection of hybrids, and Goldner Walsh donated the colorful annuals. Martha Seaman, deputy director of the library, was very helpful and cooperative, as were the Friends of the Library.

The list of donors is too long to mention everyone. Many individuals and groups were so generous, all deserve a big Thank You. Donors are listed on a plaque inside the library.



down  
to earth  
**Marty Figley**

The garden is a beautiful, restful spot for all to enjoy. I hope you can attend. Light refreshments will be served.

(It is with a heavy heart that I add this paragraph since learning that Alice Burlingame died Tuesday. Alice encouraged me and was confident that I could continue this column and suggested I keep the title "Down to Earth" so as not to lose readers, attesting to her generosity. She was my mentor and a very, very special friend. Her positive outlook was contagious and everybody who knew and worked with her will miss her.)

THE GERANIUMS in the garden add a striking color and will continue to bloom until cold weather arrives.

A favorite of many, geraniums were first taken to England in the 1700s from their native South African hillsides. Although no record exists as to when they were introduced to this country, they are mentioned in a garden encyclopedia published in Philadelphia in 1806.

Now, however, these so-called geraniums (they are actually members of the genus *Pelargonium*) are available in many different leaf forms and shades, and bloom in colors that range from white to pink, rose, salmon and bright red.

These clusters of many small flowers, called florets, range from 3 to 6 inches and may be single or double.

SUCCESS CAN be achieved with geranium cuttings and September is the month to do this. A simple way to increase the geranium population with cuttings is to use the pot-in-pot method.

An 8-inch (or larger) shallow flower pot (often called a bulb pan) with a 3-inch clay flower pot positioned in the center works well. Don't forget to cork the drainage hole in the small pot.

Fill the area in this "wreath space" with sharp sand or a mixture of three parts sphagnum peat to two parts perlite or vermiculite and fill the small pot with water. The water will seep through the walls of the pot to keep the growing mixture moist.

TAKE 3- TO 5-INCH cuttings from the firm tips with a sharp knife, cutting just below a node (where the leaf joins the stem). Let the cuttings dry out and wilt for a few hours before planting the cuttings about 1 1/4 inches deep in the mix.

Set the pan in a light, but not sunny, place. After three to four weeks, when roots have formed, put them in sunlight. In about two months transfer the plants to 4-inch pots using

three parts sphagnum peat, two parts potting soil and two parts of either perlite or vermiculite.

Let them rest in a shady spot for a few days before moving them to a sunny location (at least six hours of sunlight per day).

Fertilize only when they show

growth and are flowering. Next spring they can again be put in the garden and enjoyed throughout the season.

Marty Figley is an advanced master gardener based in Birmingham.

## Church to host antique show

First United Methodist Church, 1589 Maple, Birmingham, will host its 10th annual antique show and sale Tuesday-Thursday, Sept. 24-26.

A 7-10 p.m. \$15 per ticket preview will be Tuesday, Sept. 24, with reservations requested. Hours are 11 a.m. to 9 p.m. Wednesday and 11 a.m. to 5 p.m. Thursday, with \$4 per person tickets available at the door.

Proceeds from this event will be used for Mission Outreach.

## Pendleton Club Condominiums in Farmington Hills

**Grandma  
LOVES  
Her NEW  
Condominium**



It has a screen porch, vaulted ceilings, a carport, all appliances, beautiful landscaping and lots of extras plus other nice Grandmas live there, too! She likes the location off Middlebelt just south of 11 Mile Road because everything is so close. Bring your Grandma to visit Pendleton Club today!

From \$69,900

474-9211

## THOMPSON-BROWN

RESIDENTIAL RESALE DIVISION



FARMINGTON HILLS  
553-8700

BIRMINGHAM/BLOOMFIELD  
642-0703



NORTHVILLE - 6 acre wooded estate. New kitchen, large family, 1st floor laundry, full basement, 2 1/2 car attached garage, plus 2 additional extra size garages. Luxurious pool and cabana. Great House, Super Location! \$399,000. Call 553-8700.



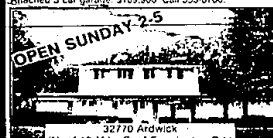
WALLED LAKE - Affordable Ranch Condo. Private entry and garage, 2 bedrooms, laundry room in unit, large porch/deck for relaxing. Freshly decorated. \$50,700. Call 642-0703.



31015 Berryhill (S. of 14 Mile, W. of Drake)  
FARMINGTON HILLS - Fabulous new custom kitchen is one of the many highlights of this 4 bedroom Quad. White ceramic floor & new carpeting enhance the bright airy feel. Attached 3 car garage. \$169,900. Call 553-8700.



FARMINGTON HILLS - Custom built unique ranch with walk-out lower level, 4 bedrooms, 3 1/2 baths. Gorgeous view of the San Marino's 3rd tee and green. \$169,900. Call 642-0703.



32770 Ardwick (N. of 12 Mile, E. of Farmington Rd.)  
FARMINGTON HILLS - PICTURE PERFECT CHARMING COLONIAL. Two way fireplace in family room and living room, 2 1/2 baths, large bedrooms, new carpeting, recently redecorated, tired lot! Ready to move into! \$152,900. Call today 642-0703.



FARMINGTON HILLS - EXCITEMENT ABOUND! Stunning two bedroom newer condo in prime area. Too many great features to list. Call for details. Don't miss it! \$189,898. Call 642-0703.

## Interest Rates Are Falling

Low rates on home refinancing  
and new purchases  
**647-8600**

EXCLUSIVE

48-hour approval program



Sunbelt  
National Mortgage



## COLDWELL BANKER

Schweitzer Real Estate

Attracts The Best!



Celeste Cole  
Birmingham

Celeste was the top sales associate in the Birmingham office in July and August. She has 19 years of real estate experience and is a member of the President's Top 30 Club and has earned the prestigious Circle of Honor award. Call Celeste at 642-2400.



Patrick Carlen  
Troy

Patrick is the top sales associate for the Troy office. He is a member of the President's Top 30 Club, and a multi-million dollar producer. Patrick has extensive knowledge of financing and marketing. Call Patrick at 524-9575.



Helen T. Williams  
West Bloomfield

Education and experience denote Helen's capability for serving you well. She's a rising star who is dedicated to customer service. For a smooth, professional real estate transaction, call Helen at 737-9000.

Birmingham 642-2400

Troy 524-9575

West Bloomfield 737-9000

COLDWELL BANKER  
SCHWEITZER  
REAL ESTATE

19 Offices Member, Eight Real  
Estate Boards in the Metro-Area.

Associates, Inc.  
855-9100  
Birmingham, Inc.  
645-5800  
Concierge  
689-4600

**RED CARPET®  
KEIM**

REAL ESTATE

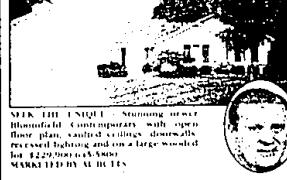
Maple West, Inc.  
553-5888  
Midwest, Inc.  
477-0880  
Walker & Assoc.  
354-1500



EDMOND - The Athens - Prestigious West Bloomfield end unit Condo backing to commons. 2 story with skylights, left and 1st floor master suite. This 4 bedroom, 2 1/2 bath home is offered at \$162,900 (BR 855-9100) MARKED BY AL BATES



LAKEVIEW - WEST BLOOMFIELD - Beautifully maintained Colonial 2nd family room, granite floor, peaced oak flooring, half tile, front and rear porches. Private lot backs to mature preserve. \$179,900 (BR 855-9100) MARKED BY JAMES BOE DRAKE



SEEK THE UNIQUE - Stunning corner Bloomfield. Contemporary with open floor plan, vaulted ceiling, downlights, recessed lighting and on a large wooded lot. \$229,900 (BR 855-9100) MARKED BY AL BATES



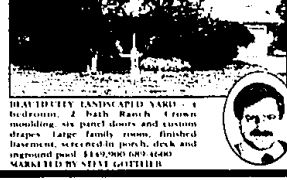
BLOOMFIELD - Custom Ranch with 4 bedrooms, 2 1/2 baths, finished basement. Family room, private dining room, half acre lot. \$249,900 (BR 855-9100) MARKED BY STEVE KEIM



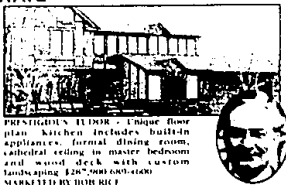
GIVENS LAKE PRIVILEGE - Bloomfield Hills custom Ranch with 4 fireplaces, 3 baths, sunroom overlooks multi-level deck & inground pool & many other features. \$499,000 (BR 855-9100) MARKED BY AL BATES



EASTON - Birmingham new construction, approximately 1,000 sq ft, designed by Cannon & Associates, spectacular master suite, family & exercise room, 2 marble fireplaces. \$450,000 (BR 855-9100) MARKED BY STEVE KEIM



MAYHEW - Birmingham new construction, approximately 1,000 sq ft, designed by Cannon & Associates, spectacular master suite, family & exercise room, 2 marble fireplaces. \$450,000 (BR 855-9100) MARKED BY STEVE KEIM



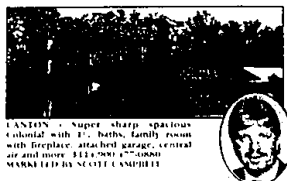
PENNINGTON - Unique floor plan. Kitchen includes built-in appliances, formal dining room, cathedral ceiling in master bedroom and wood deck with custom landscaping. \$289,900 (BR 855-9100) MARKED BY BOB RICE



COMPLETELY REDONE RANCH - In great area, offers 3 bedrooms, brick fireplace in great room, many updates, new carpet, windows. Walk to shopping, movies and parks. \$192,900 (BR 855-9100) MARKED BY MARYANN GARMO



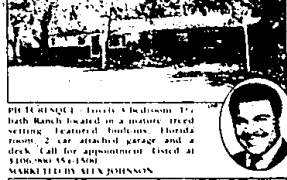
MAYHEW - YOUR DREAMING - Affordable Ranch in desirable area. 4 bedrooms, new bath. Kitchen has new granite, tile and updating. New roof and furnace. Call 354-1500. MARKED BY JOANNE TITZPATRICK



EASTON - Super sharp spacious colonial with 3 1/2 baths, family room with fireplace, attached garage, central air and more. \$119,900 (BR 855-9100) MARKED BY SCOTT CAMPBELL



NORTHVILLE - Spacious 4 bedroom 2 1/2 bath Colonial offers family room with fireplace, central air, master suite throughout. \$151,900 (BR 855-9100) MARKED BY JOHN GARDNER



PENNINGTON - Towns & 4 bedroom 2 1/2 bath Ranch located in a mature, treeed setting. Features 4 bedrooms, Florida room, 2 car attached garage and a deck. Call for appointment. Listed at \$100,000 (BR 855-9100) MARKED BY AL BATES



MAYHEW - Beautiful 4 bedroom, 2 1/2 bath Ranch. This home offers formal dining room, living room with fireplace, study, breakfast room, 2 car attached garage and carpet. 3 work new. \$169,900 (BR 855-9100) MARKED BY MARETTA GRISHAM