



Always Ready to Serve You with a Complete Line of

POULTRY AND DAIRY FEEDS

GRAIN AND SEEDS

GILDEMEISTER'S FLOUR

PILLSBURY'S FLOUR

FARMINGTON MILLS

LEO GILDEMEISTER Owner

Phone 26

Farmington

THE PIONEER MARKET

Herman A. Schroeder, Proprietor

CHOICE MEATS

Fresh Smoked Salted

EGGS BUTTER CHEESE

Everything in OUR LINE at LOWER PRICES

Try our Roasted Coffee—BEST IN TOWN

JOB PRINTING—of every description neatly done at The Enterprise

Pathfinder 29x4.40

Balloon Tire and Tube

\$17.65

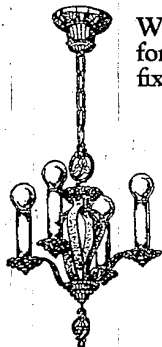
A Goodyear Product

OLIN RUSSELL

FORD SALES AND SERVICE

PHONE 151

FARMINGTON



Why apologize for your lighting fixtures?

You need not suffer the embarrassment of having old-style fixtures.

Trade them in and receive a 25% allowance on Riddle Fixtures

This is the plan so many are adopting now. It makes possible a beautiful Riddle installation at very low cost. Come in and see about it—or phone!

N. J. Eisenlord & Son

WIRING AND ELECTRIC FIXTURES

PHONE 120

FARMINGTON, MICH.

Authorized Riddle Dealer

NEW TELEPHONE CABLE TO MACKINAC ISLAND

Sixty-four and a half tons of especially made submarine telephone cable will be laid, during the coming week, connecting St. Ignace with Mackinac Island—almost four miles away—so members of the 100 families residing on the island the year around and the tens of thousands of tourists who visit that historic spot each season might have vocal communication with the outside world when and as they want it.

This cable will replace that laid in 1899, which was badly damaged by the dragging anchor of a lake freighter which was forced to anchor during a severe storm. The old cable was broken about 200 feet from the shore of Mackinac Island and, because of ice, storm and cold, it was impossible to make permanent repairs. However, temporary repairs were made, the men working on scows and in the most extreme weather, so the island people had communication with the mainland throughout the winter.

The new cable will contain 18 circuits for use for toll or long distance purposes, connecting the very efficient local exchange with the 17,000,000 other telephones of the Bell System in this country and Canada and another island, far-away Cuba, also reached by submarine. It is anticipated by telephone engineers that the new cable to be laid next week will be sufficiently large to handle increasing business until 1943. A very large volume of messages is handled from the island each year.

The placing of the cable will be a spectacular piece of work and one of great importance to the people of the state as well as to tourists and travelers. Plans met at the Michigan Bell Telephone company's northern division, which embraces all of the Upper Peninsula, will place the cable, with D. I. Dixon of Menominee, division plant superintendent, and Lyman Green of Menominee, division construction superintendent, in charge. The cable, which was manufactured in the Hawthorne plant of the Western Electric company, has been shipped to St. Ignace, where it is being coiled on a large barge in figure "S" form, loop upon loop, so it will readily slip off into the water as the boat is towed across the Straits of Mackinac.

At Mackinac Island, the cable will land at the foot of Market street, from where it will go into aerial cable leading to the central office of Mackinac Island City. At St. Ignace, 21,500 feet distant, the submarine circuits also will connect with the central office by aerial cable and from there by open wire and cable and submarine cable circuits to other points. The greater volume of messages from the island will, of course, pass through two cables, the new one to be laid next week and the larger cable extending from St. Ignace to Mackinac City, in the southern peninsula, which connect the two peninsulas of the state and was laid in 1918.

LESS RAIN THAN USUAL LOWERS LEVEL OF LAKES

The persistent lowering of the water levels in the Great Lakes during recent years has caused wide discussion both in the United States and Canada, and has been under congressional investigation, as well as the subject of international correspondence.

The Weather Bureau of the United States Department of agriculture has just completed a compilation which throws some light on this question, since it gives the amount of rainfall and snowfall in the basin of the Great Lakes for the 50-year period ending with 1924.

Broadly speaking, this study shows that the removal of the forest, the drainage of swamps, and the cultivation of the soil have had no measurable effect upon the precipitation and consequently upon lake levels. There have been, however, pronounced variations in respect to rainfall during individual years; for example, heavy rains during the 10 years from 1875-1884 reflected in high water in Superior in 1876 and in Huron and Michigan in 1885-1886. Moderate, but diminished precipitation from 1888 to 1916 is shown in lower lake levels; and, finally, there have been nine years of rains much lighter than usual, from 1917 to date, seen in the result of very decided lowering of the water levels of

the Lakes.

Past records of rainfall indicate that after a prolonged period of deficient rainfall normal rains or rain in excess of normal may be expected to prevail.

Asserts Recovery of Secret of Television

The international race for the perfection of television—transmission by wire or wireless of an animated scene—has been won by Great Britain, according to the London Post. Within a few months, it is declared a central television station may be erected.

John L. Baird, who has perfected television after years of continuous research, has been giving practical demonstrations. When he speaks before the transmitting apparatus in his laboratory his words can be heard and the movements of his face clearly seen in another room. His lips may be seen enunciating each word, and shadows change with changing expressions.

As soon as the government permission can be obtained a limited number of televisions will be constructed and sold by a company already formed for the purpose.

Baird declares his invention does not resemble in any way the telephographic transmission of photographs or still pictures.

The essential thing about television is a living scene, viewed the instant it is taking place.

Giant African Tribe

Discovery in Central Africa of a tribe of giant negroes ruled by a seven-foot king is reported by William J. W. Room, secretary of the British Foreign Bible society. He has just returned from Africa.

The tribe, says Popular Science Monthly, comprises 2,000,000 persons whose average height is between six and seven feet. The men are fond of athletic sports. Because of their height and strength, they probably could surpass the best sports records.

Gales in Freakish Mood

A gale tore the roof of a back porch of a house in Hockanum Conn., lifted it to the house roof used it to push over the chimney and then deposited it over the fire. The house soon became filled with smoke, and the occupants, the family of James H. Harrison, called the East Hartford fire department to extinguish what they believed to be a chimney fire.

WALLED LAKE

Mr. and Mrs. Mc Bride have moved into one of Freidenburg's houses at Wolverine Lake.

Charles Coe and family have moved into Parmalee's cottage in Welfare Sub.

Warren Clark and Mrs. Anna Dean were married at Pontiac Saturday afternoon.

Born to Mr. and Mrs. Lee Welch, June 15, a daughter.

A bad accident happened Friday afternoon at Welches corners. As Gerald Avery and Miss Ripley were returning from the school picnic a big Flint car driven by a woman from Pontiac struck their car as it was turning the corner. Eight persons were hurt and two ambulances were required to take them to Pontiac. It was at first thought Gerald Avery could not live, but he is on the gain at the home of William Coe. The cars were smashed beyond repairs.

Earl Bunn was called to Canada Saturday by the illness of his father.

Mr. and Mrs. L. W. Gugler and children of Hartland spent Sunday at M. S. Bachelder's.

A number of Walled Lake people took in the show at Pontiac, Monday.

Childrens Day was held in the Baptist church Sunday morn.

THE BENEFITS OF MILK



Nourishment alone keeps life at a vigorous level. But there are very few foods that nature has ordained primarily as a body builder. Milk is one of those liquid foodstuffs that builds young and old bodies, if it is PURE.

Ours is PURE.

"Quality Dairy Products"

Farmington Dairy

Tell it to 'em through an Enterprise Limer.

STATE THEATRE PONTIAC

KEITH VODVIL AND PHOTO PLAYS

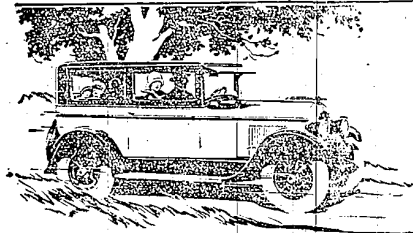
COMPLETE CHANGE OF PROGRAM SUN. AND THURS. POPULAR PRICES

Matinee—1:30 to 5 P. M. Night—6:30 to 11 P. M. Saturday, Sunday and Holidays Continuous

NEXT WEEK—SUNDAY TO WEDNESDAY JACK HOLT, ESTHER RALSTON ERNEST TORRENCE and LOUISE DRESSER in "The Blind Goddess" and Keith Vodvil

Next Week Thurs to Sat JACKIE COOGAN IN "OLD CLOTHES" and Keith Acts

Chrysler Quality and New Low Prices



The New Chrysler "60" A New Lighter Six of Famous Chrysler Quality

For you who would limit your motor car investment to any of the lower priced sizes, Walter P. Chrysler presents another sensational quality product—the new lighter six-cylinder Chrysler "60".

In this new lighter Six are the same supreme Chrysler quality and value, the same sheer brilliance of Chrysler design and the same skill and precision of workmanship that have won such public acclaim in the Chrysler "70" and Imperial "80".

Sixty miles, and more, per hour unprecedented acceleration; astonishing riding

ease and roadability—a score of fine car features never before incorporated in any car near the new lighter Six Chrysler "60" in price.

We are eager to number you with the thousands who have already approved the quality and value of this new lighter Six Chrysler "60" by enthusiastic ownership, since its presentation.

See it, drive it, experience its unusual performance—and you will, we feel sure, no longer be content with any but the Chrysler Six "60" in its field.

Touring Car, \$1075 Roadster, \$1145 Club Coupe, \$1165 Coach, \$1195 Sedan, \$1295

The New Lighter Six

CHRYSLER "60"

J. L. TAYLOR