

Mrs. Emma Spalding

NURSE

Farmington, Mich.

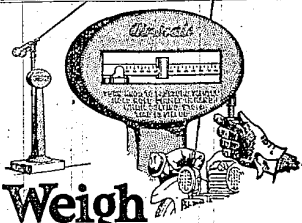
R. F. D. No. 1

CORNAIR & GILMOUR
General Trucking
LONG AND SHORT HAULS

Telephone 18

Farmington

Mich.



Weigh your Air

You will like to use the new Air-Scales we have just installed for you because they are so much more convenient and easy to use. Accurate pressures and clean filtered air mean greater tire mileage.

Air-Scales

Serve Filtered Air

Any Pressure - Accurately Measured

Water forms in air lines, oil seeps through from compressors. Both are filtered out by Air-Scales—simple, accurate and easy to operate.

Use This FREE Service
Save Your Tires

GOOD SERVICE STATION

SINCLAIR GASOLINE and OPALINE OILS
Tire and Tube Repairing—Power Batteries and Battery Service
Cor. Grand River and Division Farmington, Mich.

Air-Scale

ANNA FITZIU HEADLINES AT DETROIT TEMPLE

Anna Fitziu, American operatic prima donna, headlines the bill at B. F. Keith's Temple Theatre starting Sunday matinee. Miss Fitziu has an enviable record with both the Metropolitan and Chicago Opera companies. She has created leading roles in world premieres, among them "Goyescas" with the Metropolitan Opera company and "Agnus" and "Iris" with the Chicago Opera company. Others billed: Tad Tiaman's Tunesmiths in a maze of dancing and melody; Herbert Warren and company in "The Mahatma" a comedy in two scenes with a cast of seven; Harry Mayo and Basil Lynn in their skit "You've Dropped the Thread"; Claude and Clarence Stroud in "Two in One"; the Kemmys in their artistic display of strength; Kokin and Galetti and the new screen subjects.

ETHEL BARRYMORE AT NEW DETROIT

Ethel Barrymore will be presented in "The Constant Wife," W. Somerset Maugham's new comedy, by the Charles Frohman Company in the New Detroit Opera House, Detroit, for the week beginning Monday night, November 8. This appearance marks the return of Ethel Barrymore to the Frohman management after a brief period with other producers, and her return also to the type of part which allows her to display to the full her gift of charming and tender comedy with a serious dramatic undercurrent.

"The Constant Wife" concerns the crisis which comes to the wife of an able and successful London surgeon when, after fifteen years of comfortable married life, the shadow of the eternal triangle arises, this time becoming a quadrangle with a new and unexpected twist. W. Somerset Maugham, the playwright novelist, who wrote his first play twenty-five years ago, has had more suc-

cesses than any other English writer in the same period. "The Constant Wife," his latest comedy, is built along the lines of "The Circle," and, though quite different in plot, has the same vein of sophisticated high comedy with a dramatic seriousness running beneath the epigrammatic dialogue.

In the cast assembled to support Ethel Barrymore are such distinguished players as Mabel Terry-Lewis, Cora Witherspoon, Veree Teasdale, Jeanette Sherwin, C. Aubrey Smith, Frank Conroy and Walter Kingsford.

MICHIGAN HENS WIN BY STRETCH SPRINT

High production in the closing weeks of the Michigan State College egg laying contests won the contest cup for a pen of Michigan White Leghorns, owned by J. Pater and Sons, Hudsonville.

Birds owned by Hanson's White Leghorn Farm, Corvallis, Ore., led the production race for forty-nine weeks, but faltered in the home stretch and finished third. The pen of White Leghorns owned by George S. Sutton, Aurora, Ind., came up from behind to secure second place.

The previous record for production of individual hens was broken by hen number 4 in Hanson's pen. This bird laid 309 eggs in 358 days. The best previous record was 308 eggs in 365 days. White Leghorns won the first nine places in individual production and tied for tenth with a Barred Rock owned by F. E. Fogle, of Okemos. To tie for tenth in this contest a bird had to lay 293 eggs in 358 days.

Records for average production, for each breed shown an increase over that of any previous year. The increase made this year over the 1923 production are 23 eggs for Barred Rocks, 41 eggs for Rhode Island Reds, 19 eggs for Anconas, and 32 eggs for White Leghorns. This shows the value of egg laying contests for the stimulation of interest in the

breeding of high producing strains, according to poultry men at M. S. C.

The 1927 contest is starting with 100 pens of fine birds. Most of the states of the union have birds entered in an attempt to set still higher records.

The jungle fowl ancestor of the present day hen probably would like to issue a statement condemning present day methods and lauding the old days when 20 eggs was a year's work.

France may be puffed at the United States, but up until the present time her anger hasn't reached that point where she refuses to take those salacious divorce trials off our hands.

Time weaves many a change in the warp and woof of human existence. In the old days a man was tickled to death if they'd let him work five days a week.

Family Washing

FOR THOSE WHO LIKE GOOD WORK

DONE AT HOME

We collect and deliver.

Call 227-F21

Mrs. R. G. Clark



Fine Furniture Made Right in Your Neighborhood

GlobeCraft Furniture is shipped all over the country. It is made right at your door by experienced factory men in our work rooms at Northville. Come and see what we have to offer in suites,

davenport, odd chairs and stools. A GlobeCraft piece is a Christmas present is a gift that will give joy for generations. Come in and make your selection N O W, before the holiday rush.

GLOBE FURNITURE & MFG. CO.

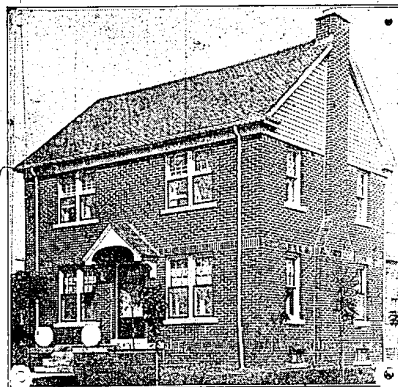
208 Plymouth Avenue

Northville, Mich.

Two blocks north of Seven-Mile Road

Before You Invest---INVESTIGATE!

'INCOME LOTS'



7% Cash Dividends

No Interest For 2 Years

Invest Your Money Safely For Income

PLAN TODAY TO VISIT

ROSEDALE GARDENS

Follow Plymouth Road to the Water Tower.

See for yourself Results which talk louder than Promises. 100 Homes, Gas, 4 miles of concrete streets, and every city conveniences.

Now, raw land, with no improvements, is always a long-time speculation. "Income Lots" pay you immediate income on fully improved property amid active building.

You save 55 per cent of ordinary interest charges. and 19 months' time. Before you invest—Investigate!

SHELDEN SONS

500 BUHL BUILDING, DETROIT

Randolph 5200

SHELDON SONS,
500 Buhl Building,
Detroit, Mich.

Gentlemen:

Please send me, without obligation,
your circular on "Income Lots."

Name _____

Address _____

City _____

Automobile Insurance

INSURE YOUR CAR WITH THE CITIZEN'S
MUTUAL AUTOMOBILE INSURANCE COM-
PANY. THE LARGEST COMPANY IN MICH-
IGAN WRITING EXCLUSIVELY AUTOMOBILE
INSURANCE.

OLIN RUSSELL

FORD SALES AND SERVICE

PHONE 151

FARMINGTON