

# 499 YEARS AGO MONDAY

Columbus discovered this wonderful place to live.

Four over 41 years, we've been helping people like you buy and sell parts of it.

We'd be happy to be of service to you.

## Weir, Manuel, Snyder & Ranke, Inc.



FOR SALE  
**WEIR, MANUEL  
SNYDER & RANKE**



**HANDSOME, BORDENER BUILT** four bedroom Tudor on beautiful treed cul-de-sac setting. Crown moldings, six-panel doors, large two-story foyer, cathedral ceiling family room. Third floor bonus room. (644-6300) 188142



**ENJOY SUNSET VIEWS** over Gilbert Lake from this one owner lakefront home by Scott. Quality and thoughtful design are found throughout. Pecky cypress family room, four bedrooms. Summer porch. (644-6300) 187793



**MEADOW LAKE FRONT.** Well designed, quality contemporary affording lake living with city convenience. Three bedrooms, 2½ baths, family room, library and two fireplaces. Central air. Great living! \$329,000. (644-6300) 185114



**MAJESTIC CUL-DE-SAC SETTING** enhances fine craftsmanship in this custom Tudor. Dramatic gallery foyer, library, family room, two fireplaces, five bedrooms, 3½ baths and a walk-out lower level. WOW! (644-6300) 192711



**EXCEPTIONAL END UNIT CONDO** built by Robertson. Very private, and lovely wooded complex. Unusually large open living area. Light and contemporary. 1st floor master. Finished lower level walk-out. \$348,000. (689-7300) 191514



**EXCELLENT VALUE** in this four bedroom, 2½ bath colonial in Bloomfield Hills. Family room with fireplace, dining room, basement. High site. Walk to elementary school. Immediate occupancy. \$154,500. (644-6300) 182853



**GORGEOUS LAND!** 158'x144' lot with lake privileges on "all sports Walnut Lake." Four bedrooms, two baths. Family oriented neighborhood. Birmingham Schools. Hurry, this one won't last! \$129,900. (651-5500) 192850



**BLOOMFIELD HILLS FOUR BEDROOM RANCH** with 20'x23' family room in private wooded setting. Fireplaces in living and family rooms. 31' deck. Much updating. Very convenient location. \$155,000. (644-6300) 188242



**TRULY UNIQUE CONTEMPORARY** walk-out ranch with unbelievable custom features thru-out. Carcase nature from an outstanding great room with windows that reach to the stars. Gourmet kitchen. \$287,000. (651-5500) 187607



**INGROUND SWIMMING POOL,** a half-acre site and a lovely three bedroom, 2½ bath colonial with newer kitchen, cozy family room, first floor laundry, central air. Many extras. Must see this one. \$182,000. (644-6300) 182814



**TOWERING TREES** enhance this spacious Potomac Village quad-level. Brick family room fireplace, 3 or 4 bedrooms, 2½ baths. Space for rec room. Deck off breakfast room. Very attractive home. \$149,900. (644-6300) 193092



**HILLTOP LOCATION** in Quail Ridge. Hardwood entry, large paneled library, screened porch off kitchen enhancing breakfast area. 4 large bedrooms, 3½ baths. Central air, sprinklers. 3 car garage. Rochester. \$319,000. (651-3500) 096147



**GREAT LOOKING 1988 TUDOR** in Bloomfield Hills. First floor master, library, custom kitchen. Lower level rec room with fireplace, 4 bedrooms. Lovely deck. 3 car garage. Bloomfield Hills Schools. \$435,000. (644-6300) 193276



**DESIRABLE END UNIT** in popular, well-located Streithmore Village Townhouses. Private patio leads to brick foyer. Two bedrooms, 1½ baths. Basement. Includes kitchen appliances plus washer and dryer. \$89,900. (644-6300) 193125



**COLONIAL SHOWING TLC** offers four bedrooms, 2½ baths, family room, dining room, walk-out basement and a large multi-level deck overlooking a ravine setting. Birmingham Schools. \$227,500. (644-6300) 192957



**HARD TO FIND** Bloomfield Village ranch. Living room, dining room, 3 bedrooms and 2 baths. Hardwood floors and much newer carpeting. Newer glassed 10x11 porch. 3rd bath, rec room, etc. in basement. \$154,000. (644-6300) 188053



**EXTENSIVELY RENOVATED** Dutch Colonial. Large living room with fireplace, library, three bedrooms, master with walk-in closet. Finished basement. Nice clean house with beautiful landscaping. \$209,000. (644-6300) 193025



**1.5 WOODED ACRES** in desirable Lone Pine Road Estates. 4 bedroom, 2½ bath center entrance wing colonial with nicely updated neutral decor. Newer circle drive. Gilbert Lake privileges. \$399,000. (644-6300) 185621



**ELEGANT END UNIT** in gorgeous West Bloomfield. Condo overlooks wooded area. Neutral decor. Cathedral ceilings. Laundry facilities. Balcony with lovely view. Private entry, pool, tennis courts. \$95,900. (689-7300) 188958



**RAVINE SETTING** for this classic in-town Birmingham 5 bedroom, 5 bath colonial overlooking river. Library, family room, 3 fireplaces. Room for pool. \$419,000. 1200 Latham, S. of Lincoln, W. of Southfield. (644-6300) 192319



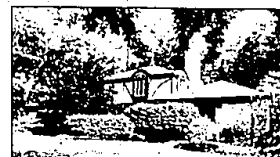
**A BETTER WAY OF LIFE** can be yours in spacious Tudor. 4 bedrooms. Den, gourmet kitchen, brick courtyard, wrap-around deck, 3 car garage, professionally landscaped, wooded lot with stream. Rochester. \$324,900. (651-3500) 096675



**METICULOUSLY MAINTAINED TOWNHOUSE.** Lovely courtyard entrance, living room with fireplace, bay windowed library. Dining room. 2 bedrooms, 2½ baths. 1st floor laundry. Basement. A true gem! \$216,500. (644-6300) 192683



**BLOOMFIELD HILLS SCHOOLS** and mailing. On the Thursday Realtors' tour of listings, the 5 agents in our car agreed this was the best of the day. Library could be 1st floor master. 4 bedrooms, 3½ baths. \$399,900. (644-6300) 193105



**ELEGANT TUDOR** in Bloomfield Hills with exquisite architectural detailing. Treed, natural landscaping and stone walks. 4 bedrooms, 3½ baths. Newly decorated. Walk-out lower level. Motivated Seller! (651-5500) 181274



REALTOR.



**HOMEQUITY  
RELOCATION CENTERS**

## Weir, Manuel, Snyder & Ranke, Inc.

• **HOURS** weekdays from 8:30 in the morning until 8:00 in the evening.  
• **Saturday** until 5:00 P.M.  
• **Sunday** afternoons to 5:00 P.M.

298 South Woodward  
7285 Orchard Lake Road  
4700 Rochester Road  
1205 West University Drive  
498 South Main Street

Birmingham/Bloomfield Hills  
West Bloomfield/Farmington Hills  
Troy/Birmingham/Bloomfield  
Rochester/Rochester Hills  
Plymouth/Northville/Canton/Novi

• 644-6300  
• 851-5500  
• 689-7300  
• 651-3500  
• 455-6000