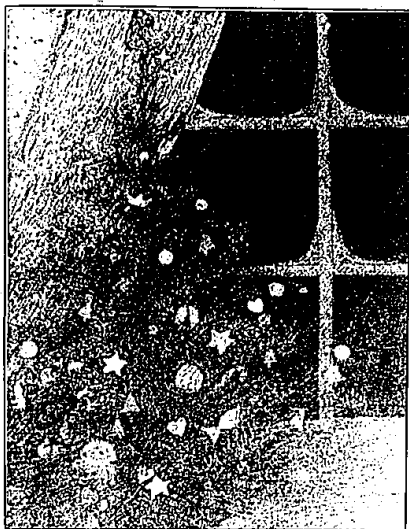


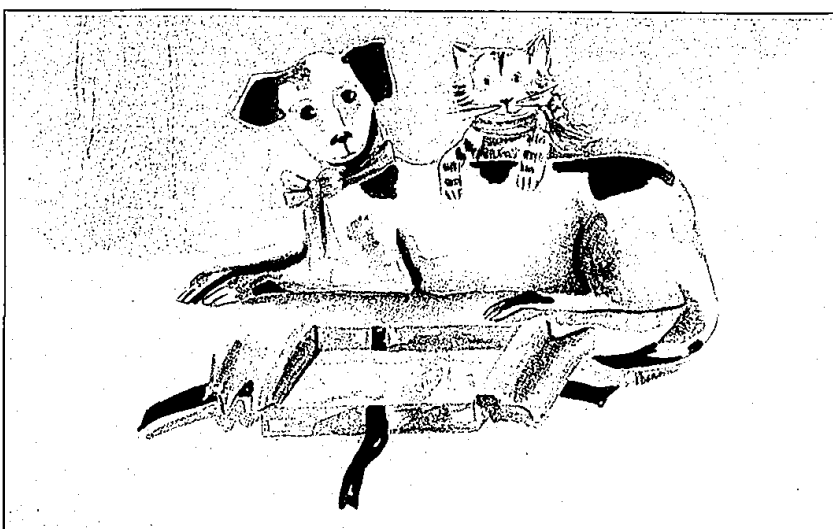


Thursday, November 7, 1991 O&E

(F1C)



Michigan Cancer Foundallon



Anti-Cruelty Association of Michigan.



RP Foundation

Seasons greetings Holiday charity cards multiply good wishes

As with other holiday greeting cards, charity greeting cards depict snow scenes and sleds, Christmas trees and children, as they send on the best wishes of the season.

But the wishes they send are multiplied because of the worthwhile causes that benefit when they are bought.

This season, the Observer & Eccentric Newspapers is again offering an easy way to select cards sold by charitable, non-profit agencies.

Beginning today, the 12 newspapers will publish samples of cards with pertinent ordering information as space permits throughout the holiday season.

In addition, scrapbooks of the cards and ordering information will be maintained for browsers at the five O & E offices: 26251 Schoolcraft, Livonia; 805 E. Maple, Birmingham; 21898 Farmington Road, Farmington; 410 N. Main, Rochester; and 744 Wing, Plymouth.

Following are the agencies and organizations with holiday cards featured on this page.

• Anti-Cruelty Association of Michigan, 13569 Joseph Campau, Detroit, 48212.

Artwork was donated by Birmingham artist, Karen Benson. Available at the shelter or, in the O&E coverage area, at Pet Emporium, 33523 Eight Mile, Livonia; or Pet Supplies Plus at: 14835 Telegraph, Redford; 2925 S. Rochester Road, Rochester Hills; 30720 Orchard Lake, Farmington Hills; 5304 Dixie Highway, Waterford; and Sandy's Dell, 320 East Maple, Birmingham. For more information call the shelter at 891-7188.

• East Michigan Environmental Action Council, 21220 West 14 Mile Road, Bloomfield Township, 48301-4000, in the Nativity Episcopal Church. All cards are on recycled paper. Cards may be purchased at the EMEAC office. For more information, call the council at 258-5188.

• Cystic Fibrosis Foundation, Metropolitan Detroit Chapter, 20300 Civic Center Drive, Suite 304, Southfield, 48076. Cards help

fight cystic fibrosis, a life-threatening genetic lung disease. For more information, call 354-6565.

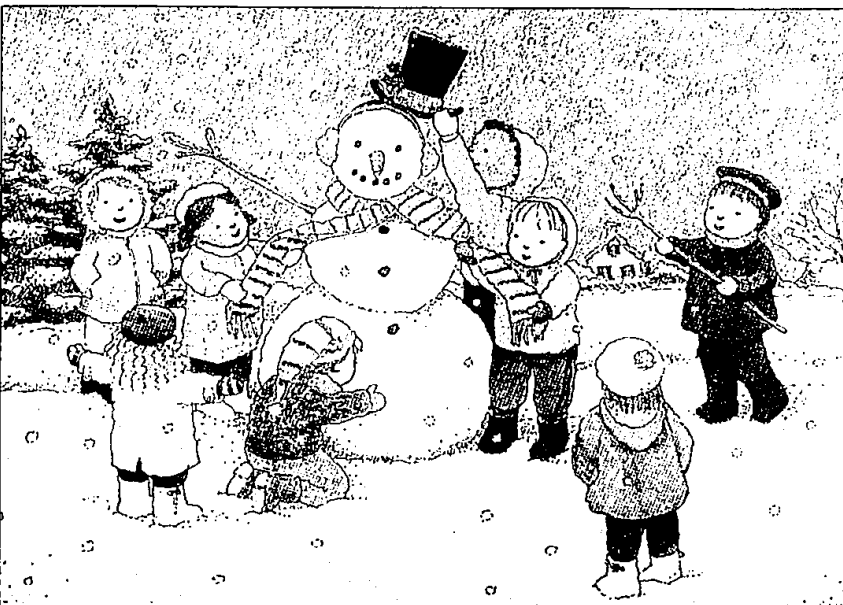
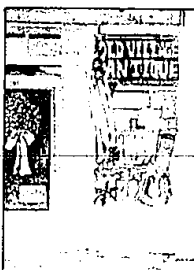
• RP Foundation, Michigan RP Affiliate Card Order, Park Layne Apartments, 28927 Little Mack, No. 203, St. Clair Shores, 48081. RP is an inherited disease of the retina that causes loss of peripheral vision and blindness. For more information, call 773-8231.

• Michigan Cancer Foundation, 110 East Warren Ave., Detroit, 48201. Cards support the

many different programs of the organization. Cards may be shipped directly or picked up at locations which include: 831 W. Huron, Pontiac; 744 Wing Street, Plymouth; Neighborhood House, 1234 Inglewood, Rochester. For more information, call 833-0710.

• Plymouth Community Arts Council, 332 S. Main, Plymouth, 48170. A variety of programs includes entering into a partnership with Wayne County to renovate and develop Wilcox Mill as a multi-community arts center. For more information, call 455-5260.

Plymouth Community Arts Council.



Cystic Fibrosis Foundation



East Michigan Environmental Action Council.