

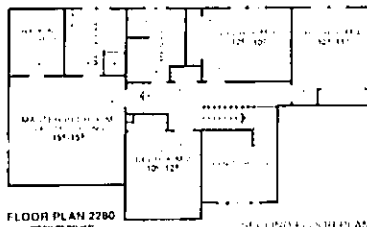
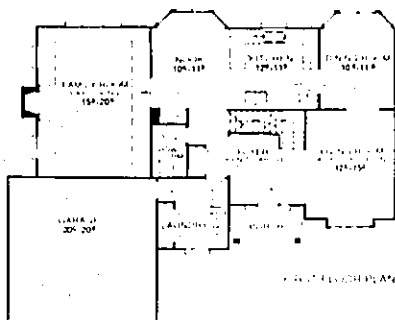


The Premier

Lot 9

Builder: BBC Group, Farmington Hills.
Architect: Thomas W. Kurmas & Associates.
Landscaper: Cambridge Land Balancing.
Interior Designer: Patricia Newman Interiors.
Square feet: 2,370. **Bedrooms:** 4. **Bathrooms:** 2½.
Price: \$229,000-\$254,000.

Features: Traditional colonial. Stately architectural design and exterior elevation with fieldstone accent and eyebrow transom windows. Double-door entrance opens to dramatic two-story foyer with oak flooring. Living room features cathedral ceiling and boxed window. Spacious family room is enriched by 10-foot-high tray ceiling, full masonry fireplace with brick to ceiling, and French doors for outside access. Designer kitchen contains built-in, desk-top work station, pantry cabinet, deluxe laminate countertops with stained wood reveal and adjacent spacious nook with bay window. Step-up master bedroom suite has vaulted ceiling, plant shelf and walk-in closet. Master bathroom includes a platform tub with separate shower.



Simply beautiful..

OVER 100
STYLES, COLORS
AND FINISHES
TO CHOOSE FROM

KITCHEN CABINETS



KITCHEN SHOWN:
"HALLMARK" by
HOMECREST

UP TO **65% OFF**
Manufacturers List Price
On Mid-Continent Cabinets
WE DISCOUNT BRAND NAMES SUCH AS:
RIVIERA, HOMECREST
OR MID-CONTINENT
CABINETS EVERYDAY!
Discount prices are for comparison only.

FREE KITCHEN PLANNING
Bring in your Kitchen Measurements to our Trained Kitchen Experts and we'll help you design the Kitchen of your dreams...Ask Us!

LIVONIA 261-5110 11970 Farmington Rd.

Ask for: Tracy Wyman

HOWELL
3450 E. GRAND RIVER
(517) 548-5410

ROYAL OAK
905 SOUTH MAIN ST.
548-2153

BRIGHTON
575 WEST MAIN ST.
227-1831

WATERFORD
7374 HIGHLAND RD.
666-2450

REDFORD 937-0111 12234 Inkster Rd.

Ask for: Dave Mueller

PONTIAC
888 ORCHARD LK. RD
334-1511

YPSILANTI
626 NORTH HURON
481-1500

COMPUTERIZED
KITCHEN PLANNING
AVAILABLE

WE
HONOR

