

Building Scene

CLASSIFIED ADVERTISING

Marilyn Fitchett editor/853-2102



Thursday, December 12, 1991 O&E

★10

Making a list . . . for a holiday dream home

IF YOU'RE in the market for a new house now — or maybe just a few ideas for a remodeling or a future buy — head over to Homearama, a showcase of demonstration homes sponsored by the Builders Association of Southeastern Michigan.

Thirteen decorated houses, many in holiday style, will be open for public display through Dec. 22 in the Riverbridge Subdivision of Novi.

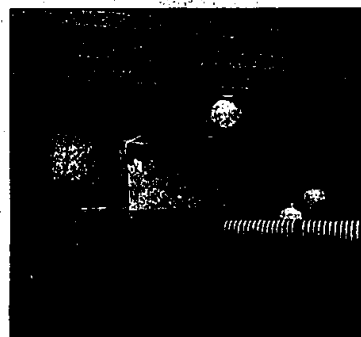
Several new builders, most with ties to Observer & Eccentric communities, have taken the challenge of providing a new house, a lot and landscaping for no more than \$250,000.

For that kind of money, builders downsized to 2,560-square-foot or less. Still, there's room for creativity in the use of upstairs bridges, high ceilings, wider doorways, pillars, mirrors, open foyers and dark trim.

Several highlights jump out.

- Three upstairs bedrooms in the Morgan II model, built by Michigan Custom Homebuilders of Livonia, all have a different look. One has a large bay window; another is built in traditional rectangular fashion and the third has an irregular shape. The upstairs bridge is at the end of the hall, away from the bedrooms.

Pillars separate the dining room from the foyer.



The Landon, built by Fairway Custom Homes in Southfield, features a triple-tiered ceiling in the master bedroom.

- The Victorian Rose, a ranch built by D&J Property Development of Canton, has an octagonal shaped parlor and cherry-wood custom cabinets with carved trim over the cabinets in the kitchen. Wood as an accent is carried through the house — around the ceramic tile fireplace, in lattice trim around entranceways and in the use of wood windows.

- The Landon, built by Fairway Custom Builders of Southfield, looks like a traditional colonial on the outside, but contemporary on the inside.

Black, white and red are the decor colors throughout the house. Soft lighting and a raised fireplace with black mirrors are especially attractive. The master bedroom features a triple-tiered ceiling.

The Landon has a second-floor laundry; after all, that's where the bedrooms are, as does The Baybrooke model built by Pulte Homes of Michigan.

- A second model built by Fairway for the show, the Bellevista, features a see-through fireplace looking into the great room on one side and a hearth room, a small sitting area off the kitchen, on the other.

- The Aspen II, built by Cohen Associates of West Bloomfield, uses a bold blue for the fireplace mantle and bookshelves and again around the wall near the ceiling of the family room. An open foyer and wide doorways present a more spacious look.

- The Villager built by Leo Soave of Livonia features a compact floor plan that offers a circular traffic pattern through the house from front door to den to master suite to family room to dining room to kitchen to utility room to bath then to the front door.

- The Carrington model built by Cornerstone Building of Novi features a double cathedral ceiling in the master suite with a walkout balcony, an upstairs bridge offering a view to the living area below or to the outdoors, and a stereo system throughout the house.

WHAT SHOULD you look for when you visit Homearama? "Visitors should pay special attention to molding, some ceiling detail, window treatments, floor detail," said Dennis P. Dickstein, Homearama chairman. "These are the things they can't go somewhere else and see."

"If they're really looking for ideas, take a small spiral secretary's notebook and a couple of pens," Dickstein added. "Enjoy the decorations, enjoy the ideas, enjoy the houses."

Homearama hours are 4-10 p.m. Monday through Friday and noon-10 p.m. Saturday and Sunday through Dec. 22.

Tickets, \$5 per person, are available at the site. Discount tickets, \$4 and good Monday through Friday only, are available at Standard Federal Bank, Detroit Edison and Consumers Power offices.

Admission includes parking and a plan book featuring each home.

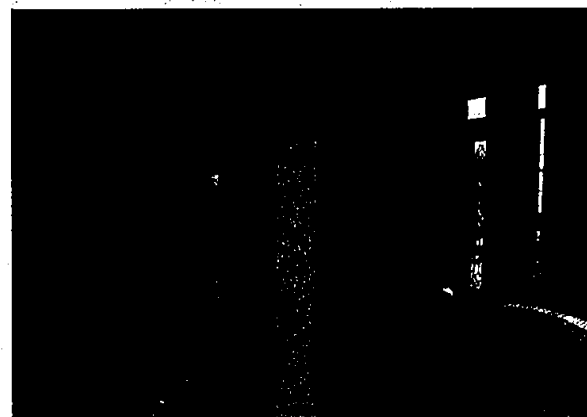
Riverbridge Subdivision can be reached by taking Roethel Court off Nine Mile Road between Meadowbrook and Novi roads.

Allow 2½-3 hours for thorough viewing.

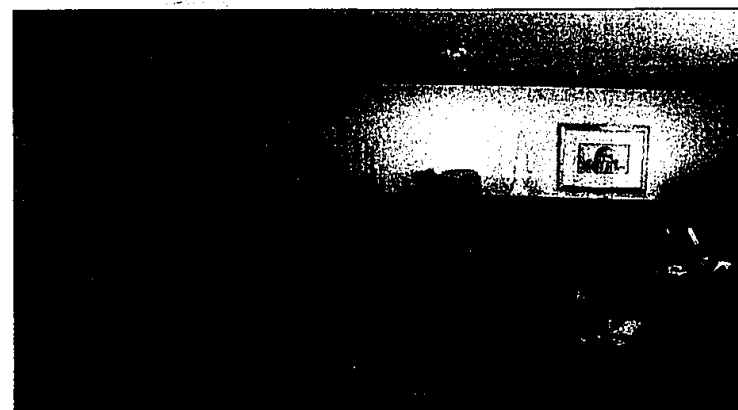


Victorian Rose octagonal parlor (left) features an inlaid rose design in the oak floor. Exterior is below. D&J Development Co. of Canton is the builder.

photos by PAUL HURSCHMANN



Traditional pillars are an interior feature in the Morgan II by Michigan Custom Homebuilders Group, Livonia.



A bold blue accent draws the eye in the Aspen II by Cohen Associates, West Bloomfield.

Time Is

Out!

Stonebridge offers a Superior Lifestyle

From Sidewalks throughout

Dedication to Quality Construction

Had a Great Family Community

The time to discover Stonebridge is now!

Not only does Stonebridge offer the most beautiful, well-built homes on the market, we also offer something else of equal importance — a close-knit family community. Stonebridge is in a class by itself. Come visit us soon. But hurry — since the homes are selling quickly there's no telling when time may run out!

Wooded sites are still available
Priced From \$299,500
661-6654

STONEBRIDGE

Single Family Homes
WEST BLOOMFIELD

Decorated by Germany's
Hofmann & Son

Another Fine Community by Susan & John Associates
A The Schuler Group

South of Maple between
Farmington and Oakleaf Rd
Open 12-5 Daily
Or by Appointment