

# Victorian Rose tops in Homearama voting

Victorian Rose, a ranch-style home built by D&J Property Development of Canton, barely edged the Baybrooke model, a stone and brick colonial constructed by Pulte Homes of Michigan, Royal Oak, as the Peoples Choice Award winner at Homearama.

Only nine votes among several hundred cast separated the two models in the informal popularity poll. Visitors who attended the showcase of idea homes in Novi voted during the opening weekend.

Homearama continues through Sunday. Some builders and designers will sell furniture and decorative objects from their models on that date. Buyers are asked to check on availability with representatives in specific models.

Highlights of the Victorian Rose include an octagonal-shaped parlor with an island rose design in an oak floor; a skylight over the work island and cherrywood custom cupboards in the kitchen; and a Victorian-style claw foot tub, pull chain toilet and pedestal sink in the main bath.

Visitors who liked the Victorian Rose mentioned its homey feel, woodwork and kitchen, reported the Builders Association of Southeastern Michigan, the show sponsor.

THE HOUSE of nearly 2,000 square feet with extra like brass fixtures and the cherrywood cabinets and including lot and landscaping carries a price of \$279,500.

"We're just walking on cloud nine after winning People's Choice the first time out," said Dan Barton, co-owner of D&J Property Development.

"We've blended modern and traditional all the way through this



Exterior of Victorian Rose.

house," he added. "We tried to show our company can build either end and still do a good job."

The contrasts include a whirlpool tub in the master suite with the claw foot tub in the second bathroom.

"One thing that really helped captivate the crowd was the furniture that complements the house," Barton said. "Grandma's Loft, with stores in Rochester, Penton and Flint, provided it."

"She (Morgan Cates, owner) does a lot of duplication, reproduction antiques," Barton said. "The Amish of Pennsylvania make it in solid oak." Barton's wife and partner, Jan, designed the kitchen cabinetry with lattice work, he said.

THE BAYBROOKE features a dining room with two walls of win-

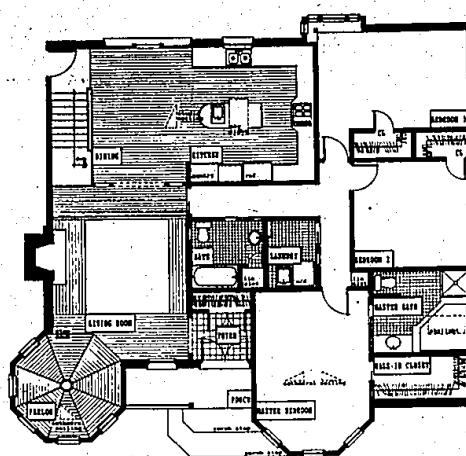
dows, a gas fireplace in the master bedroom and a step-down family room with a brick fireplace.

The four-bedroom, 2½-bath model of 2,500 square feet with extras like alarm system, upgraded floors and speaker system is priced at \$249,000.

This year's Homearama also is the first for Pulte's participation.

"People feel at home in the model," said Deen Hyde, marketing director. "People stand there and say, 'I could just move in.'"

"One of the strongest points of the home is the relationship of the rooms," she added. "We think the whole house works together — the design, decor. People comment on that. We expanded the family room, made it bigger and made the dining room bigger."



FIRST FLOOR PLAN



Victorian Rose floor plan (top). The kitchen with its lattice work trim over the cabinetry scored points with the voters.



Call Us Now!

...to place your Observer & Eccentric Classified ad.

WAYNE 591-0900

OAKLAND 644-1070

**NOVI** Offered by Steelman Building, Inc. Open Sun., Dec. 22, 1-4. 2260 Crown Dr. Step by on your way to Homearama & see this custom contemporary Cape Cod. Extraordinary energy efficient. Glad & cedar shingles, triple glazed windows & skylights. 3 bedroom/master bedroom suite, 2½ bath/ceramic floors, fireplace, 1st floor laundry, walk-out lower level, large family room, 2 car garage, deck overlooking small creek, gas range, dishwasher & garage opener, cathedral ceiling/living room, track/recessed lighting. Choose your colors & carpet. **\$156,000** (313) 334-1709

## Award to Cranbrook Chase

Continued from Page 1

wall, and features doors that each have a cluster of small open squares in one corner, to be used instead of a handle.

WITH THE two-story residence, the architect and designer went for more drama.

Examples can be seen in the sweeping stairway, with a railing treated to look like old copper; a large, single faux marble square in a bathroom floor; bold black and white tiles in another bathroom floor; and

a multi-angled bedroom ceiling upstairs that reminds one of an origami, folded-paper work.

Furnishings can be whimsical — such as a table that resembles flat wooden sticks — or bold — such as the end tables with iron legs in the living room. Again, the colors are natural.

Downstairs, the kitchen is large enough for entertaining. Off the kitchen is an arrangement of table, chairs and accessories that makes a small family room.

THE UNITS contain such basic elements as a first floor laundry, and a

large, open lower level suitable for entertaining or converting into an exercise room.

Space is important in the design. Residents have room for what they have accumulated, from a workshop to a favorite easy chair to a parent's buffet.

At Cranbrook Chase, "1991" can be seen on some furniture and throw pillows, like an artist's signature. Some art you live with. This is "art" you can live in.

John Gristall & Associates of Farmington Hills was the landscape designer.

**Come And See The Giving Tree At Fox Pointe.**

It's gift-giving time twice again and ADCO Homes wants to give you up to \$5000 worth of upgrades when you buy an ADCO home in either Fox Pointe of Plymouth or Bradford of Novi. Stop by our model in Foxpointe between now and January 12, 1992, and choose an uncommitted gift from our Giving Tree, and apply it to a home purchased before February 16, 1992. It's our way of saying...Happy Holidays!

**ADCO PROPERTIES INC. 455-2880 CUSTOM BUILDERS-DESIGNERS**

**Ask About Our Incredible Interiors**

**LOCHMOOR** AT VOORHEES LANE 391-2221 or 335-8900

Developed by **ADAMS**

Buy time at **LOCHMOOR**... Time to fish, time to sail, time to golf, time to relax... Enjoy the woods and the water in a carefree ranch condominium home from the \$130's.

**When You Want To Get Away,** just drive a few miles north on I-75 to Joslyn Road, the first exit past the Palace of Auburn Hills turn right and look for our entrance just a couple of miles north.

**Come Home!** We'll make it easy for you to take it easy with unbeatable financing and immediate occupancy.

**LOCHMOOR** AT VOORHEES LANE 391-2221 or 335-8900

**PHASE II NOW OPEN**

**Silley Pointe** Condominiums

**BUY NOW AND SAVE LOW INTEREST FHA LOANS FROM \$68,500 2 BEDROOM - 2 BATH UNITS**

Take advantage of mortgage interest and property tax deductions and build equity in your own home at the same time.

New models now open. Three deluxe floor plans. All appliances including washer, dryer and microwave.

**12-5 Daily 981-6550** (Closed Thursday) SALES BY CENTURY 21, HARTFORD SOUTH, INC.

**On The Water... BLUE HERON POINTE** Beachfront Cluster Homes in Northville Township

Crystal clear water for swimming, boating & fishing... a lifestyle you'd love to come home to!

Featuring spacious ranch and 2 story luxury homes with walkout lower levels and private decks patios overlooking calm water and sandy beachfronts.

from **\$199,500**

**344-8808** Sales Center Models Open 10-6:30 pm

**"LIVONIA'S BEST KEPT SECRET"**

OUR QUALITY IS THE DIFFERENCE NOW... special low price FROM **\$129,900** Lot #32

Whispering Winds CONDOMINIUMS **953-0765** OPEN 7 DAYS Hours: 11 a.m.-7 p.m. Weekdays Noon-6 p.m. Sat. & Sun.

**Eaton Estates on the Water**

**Spectacular CUSTOM BUILT CONDOMINIUM HOMES in Plymouth Township**

If you have ever considered living in a luxury condominium community such as Eaton Estates, NOW is the time to buy! Choose from either \$10,000 off purchase price, or \$10,000 rebate on extras, or 80 CLOSING COSTS (select models). This offer valid until December 31, 1991. Hurry! Limited units left.

**From \$229,500**

**455-4220** Open Fri.-Mon. 1-6 p.m.